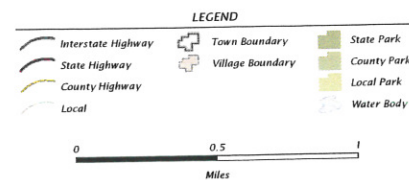
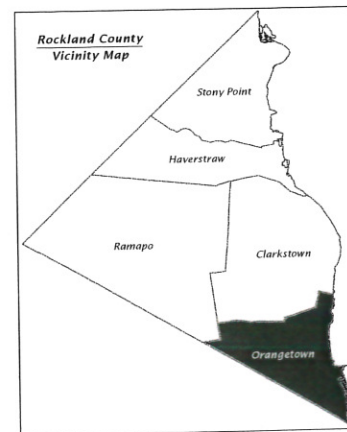
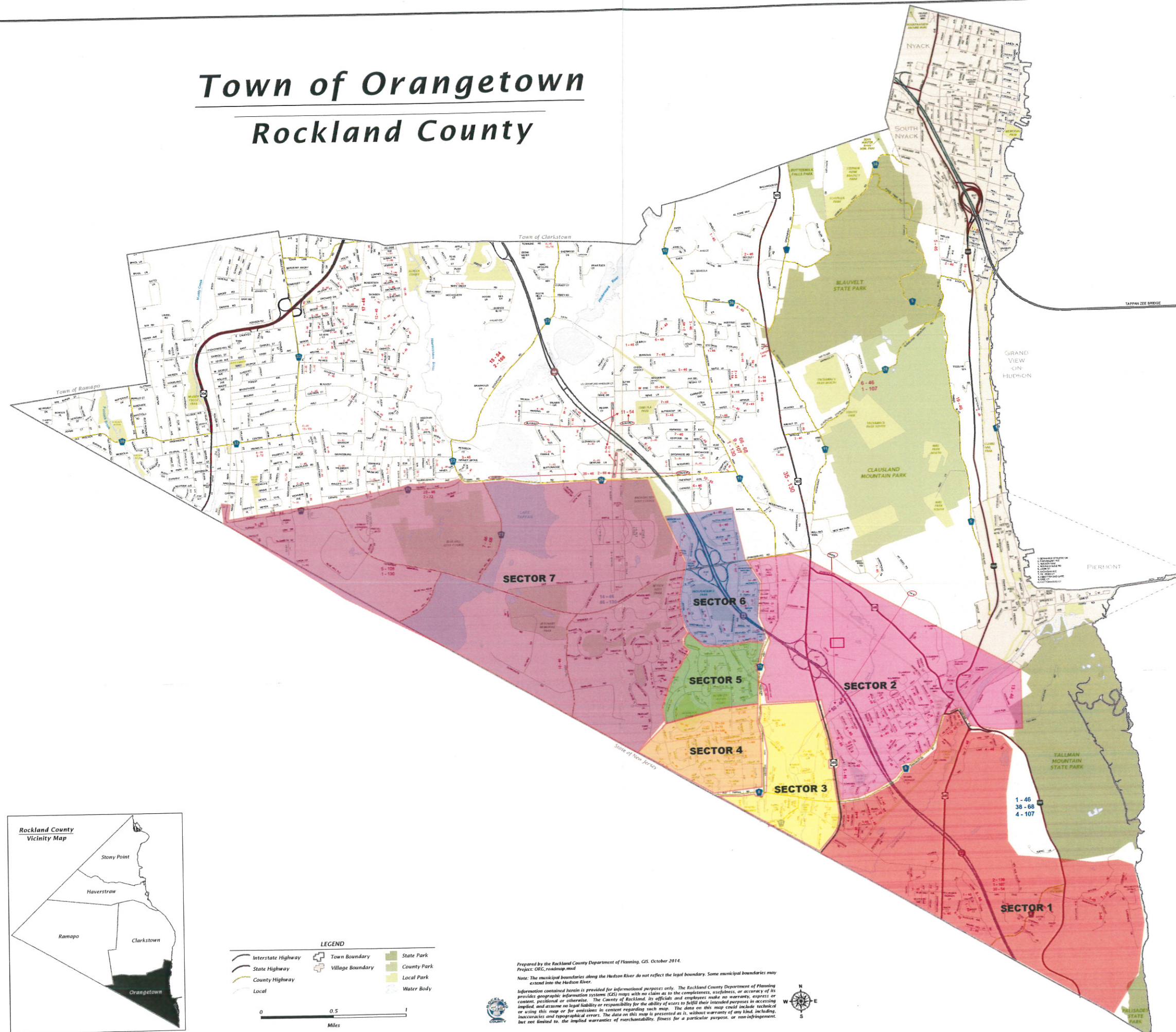


# Town of Orangetown

## Rockland County



Prepared by the Rockland County Department of Planning, GIS, October 2014.  
Project: ORC\_Roadmap.mxd

Note: The municipal boundaries along the Hudson River do not reflect the legal boundary. Some municipal boundaries may extend into the Hudson River.

Information contained herein is provided for informational purposes only. The Rockland County Department of Planning provides geographic information systems (GIS) maps with no claim as to the completeness, usefulness, or accuracy of its contents, positional or otherwise. The County of Rockland, its officials and employees make no warranty, express or implied, and assume no legal liability or responsibility for the ability of users to fulfill their intended purposes in accessing or using this map or for omissions in content regarding such map. The data on this map could include technical inaccuracies and topographical errors. The data on this map is presented as is, without warranty of any kind, including, but not limited to, the implied warranties of merchantability, fitness for a particular purpose, or non-infringement.

