

**JAMES J. DEAN**  
Superintendent of Highways  
Roadmaster II

Orangetown Representative:

R.C. Soil and Water Conservation Dist.-Chairman  
Stormwater Consortium of Rockland County  
Rockland County Water Quality Committee



**HIGHWAY DEPARTMENT  
TOWN OF ORANGETOWN**

119 Route 303 • Orangeburg, NY 10962  
(845) 359-6500 • Fax (845) 359-6062  
E-Mail – [highwaydept@orangetown.com](mailto:highwaydept@orangetown.com)

Affiliations:

American Public Works Association NY Metro Chapter  
NYS Association of Town Superintendents of Highways  
Hwy. Superintendents' Association of Rockland County

January 31, 2018

Dear Interested Party:

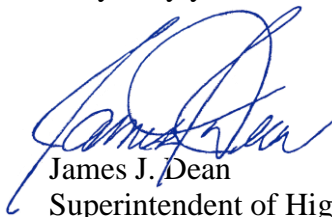
As you may already be aware, the Town of Orangetown will be constructing a paved bicycle path on the east side of Route 303 that, when complete, will connect two ends of Greenbush Road in Blauvelt. (Please see site map on reverse side). The Orangetown Highway Department, the Department of Environmental Management and Engineering and the Parks and Recreational Department will be hosting a “**Greenbush Road Bicycle By-Pass Project**” **Neighborhood Information Meeting** as noted below.

**Tuesday, March 6, 2018**  
**at 6:30 PM at**  
**Town Hall, Multi-Purpose Room**  
**26 Orangeburg Road**  
**Orangeburg, NY 10962**

I hope you will be able to attend this meeting. Please be advised, should there be inclement weather, this meeting may be postponed. Please check the Town’s website for any updates.

If you have any questions regarding this or any other highway related matter, please contact Stephen F. Munno, Sr. Administrative Assistant at (845) 359-6500 or you may reach him via e-mail at [highwaydept@orangetown.com](mailto:highwaydept@orangetown.com).

Very truly yours,



James J. Dean  
Superintendent of Highways

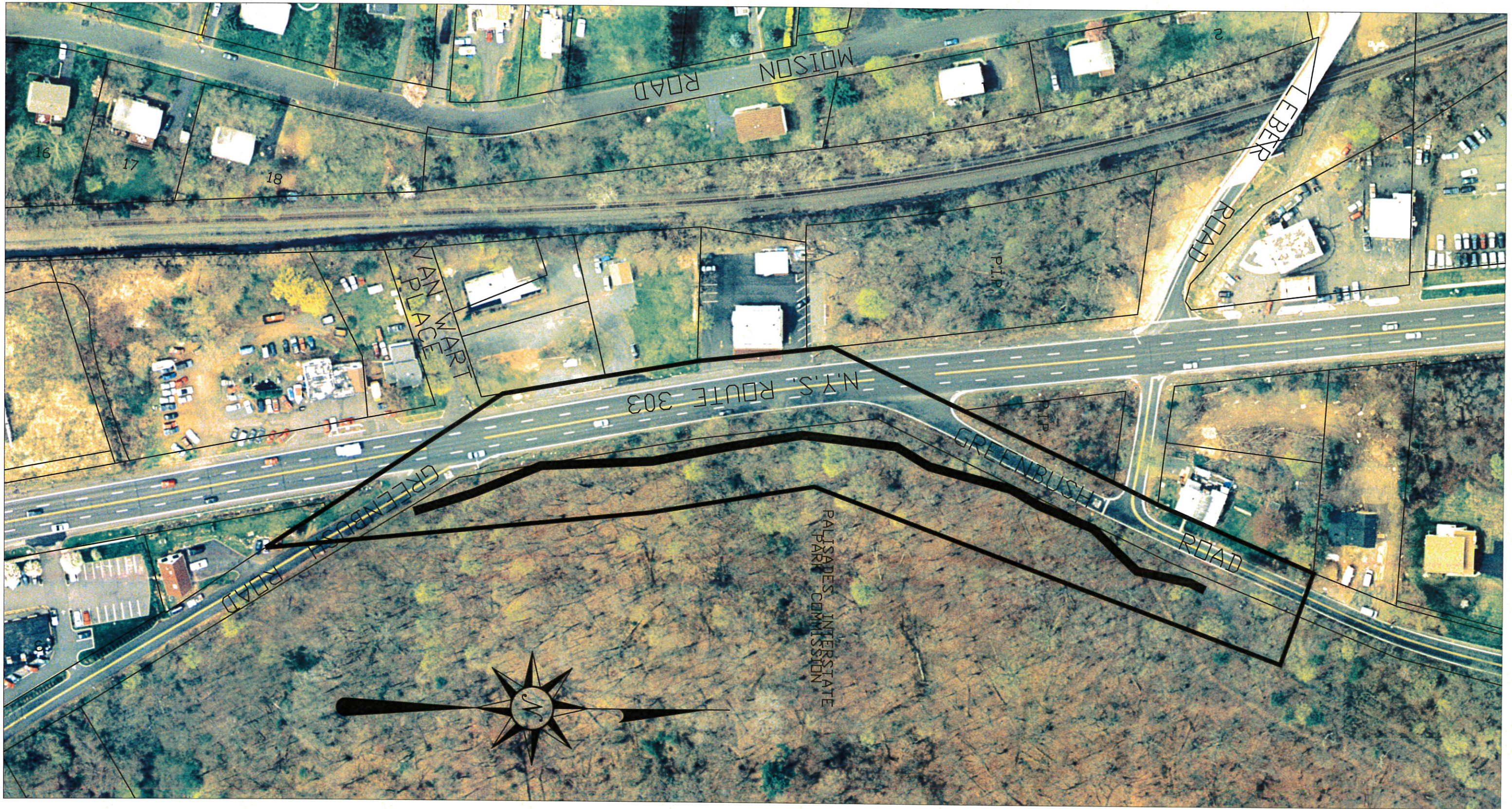
cc: Orangetown Town Board  
Jim Hall, Executive Director, Palisades Interstate Parks Commission  
Joseph Moran, P.E., Commissioner, Dept. Environmental Mngmt. & Engineering  
Aric Gorton, Superintendent, Orangetown Highway Department

JJD/sfm

HAMLETS: PEARL RIVER · BLAUVELT · ORANGETOWN · TAPPAN · SPARKILL · PALISADES · UPPER GRANDVIEW



CLEAN STREETS = CLEAN STREAMS



PROPOSED TRAIL   
LIMIT OF SURVEY 