



Mid-Rise Condominiums

TOTAL SQUARE FEET: 1,431.27

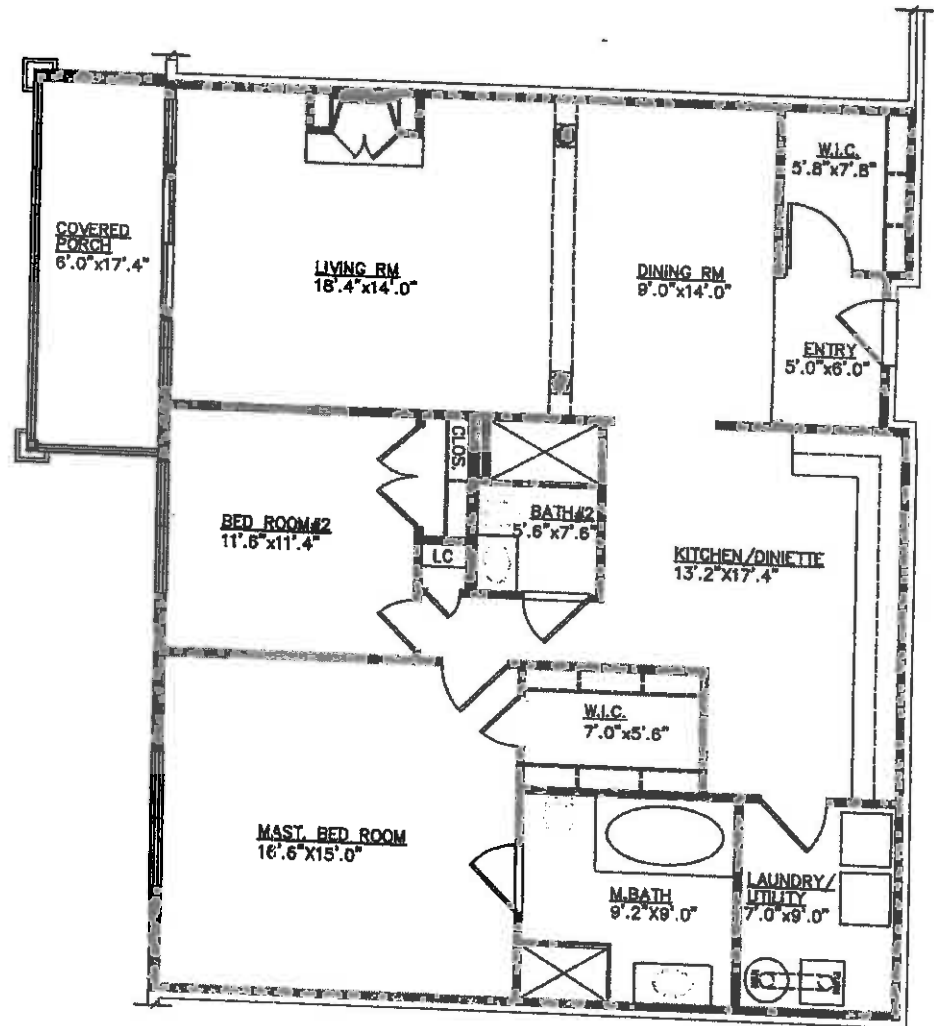
FEATURES:

- Bedrooms - 2
- Baths - 2

OTHER FEATURES:

- Covered Porch

Main floor



6107 Fred III Jr. Court



Town Homes

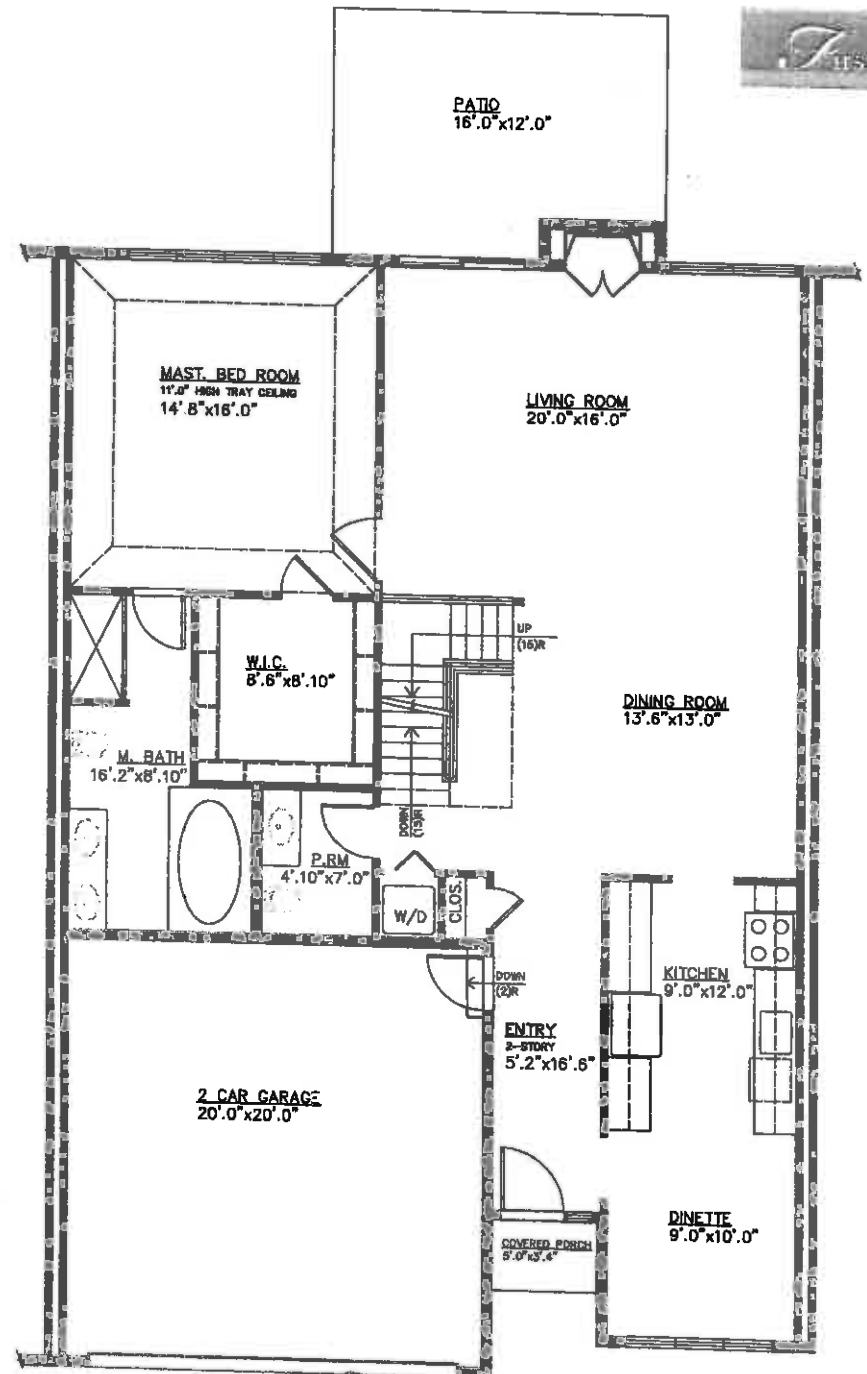
TOTAL SQUARE FEET: 2,477.86

This open plan town home features a covered porch; two-story foyer; light-filled living room with cathedral ceiling and fireplace; dining room with decorative columns; generous patio with hand-laid paver blocks; gourmet galley kitchen with dinette area; powder room and laundry room. The master bedroom suite enjoys tray ceiling, walk-in closet and marble-floored bath with whirlpool tub. A generous two car garage opens on to the driveway of paver blocks.

The dramatic staircase leads to a generous loft area and two finished storage rooms. The second bedroom features a walk-in closet and an elegant bath with cast iron tub.

The roomy basement level is ready to customize and pre-stubbed for plumbing. An areawell provides natural light and an egress point for safety.

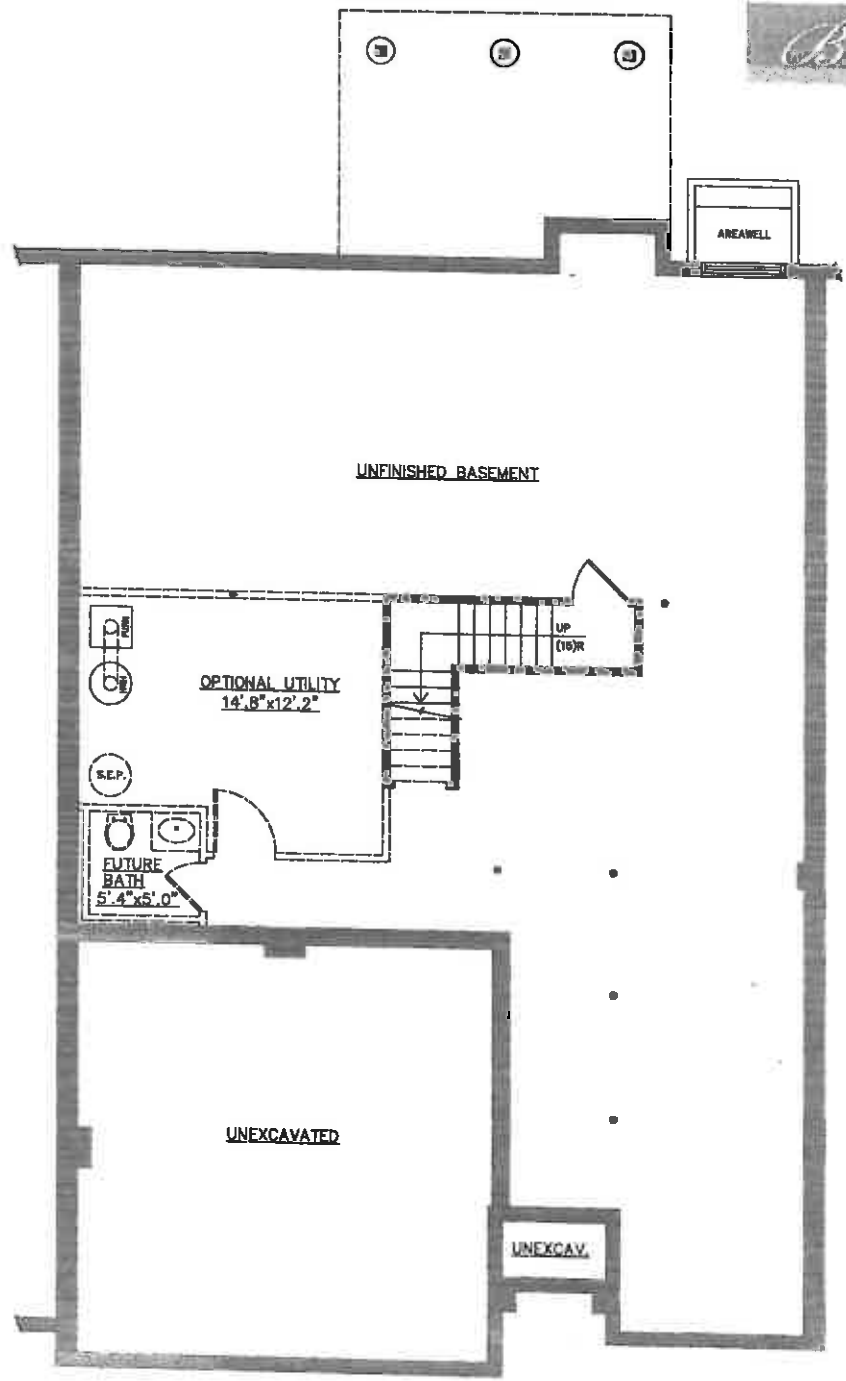
First Floor



6 Michael Roberts Court



NOTES:



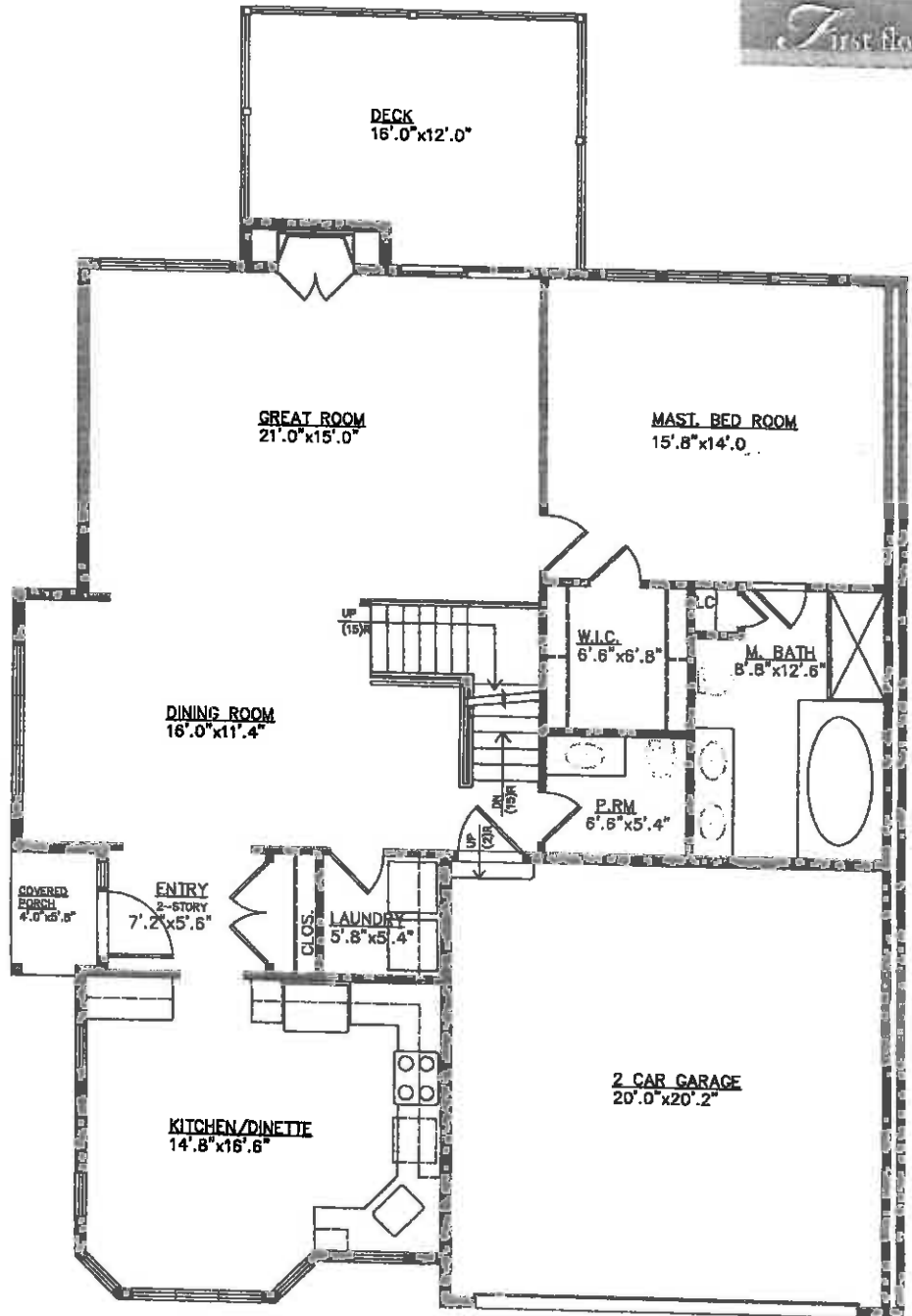
Town Homes

TOTAL SQUARE FEET: 2,529.87

The covered porch of this town home opens to a two-story foyer, light-filled great room with natural gas fireplace, elegant dining room with decorative columns, generous outdoor deck, eat-in kitchen with dinette area, powder room and full laundry room. The first floor master bedroom suite features a walk-in closet and marble-floored bath with whirlpool tub. The two car garage opens on to a driveway constructed of paver blocks.

The impressive staircase leads to a spacious loft area ideal for a home office. One of the two upstairs bedrooms displays a vaulted ceiling and closet wall and the other bedroom features a full walk-in closet. The elegant upstairs bath has a marble floor and a cast iron tub.

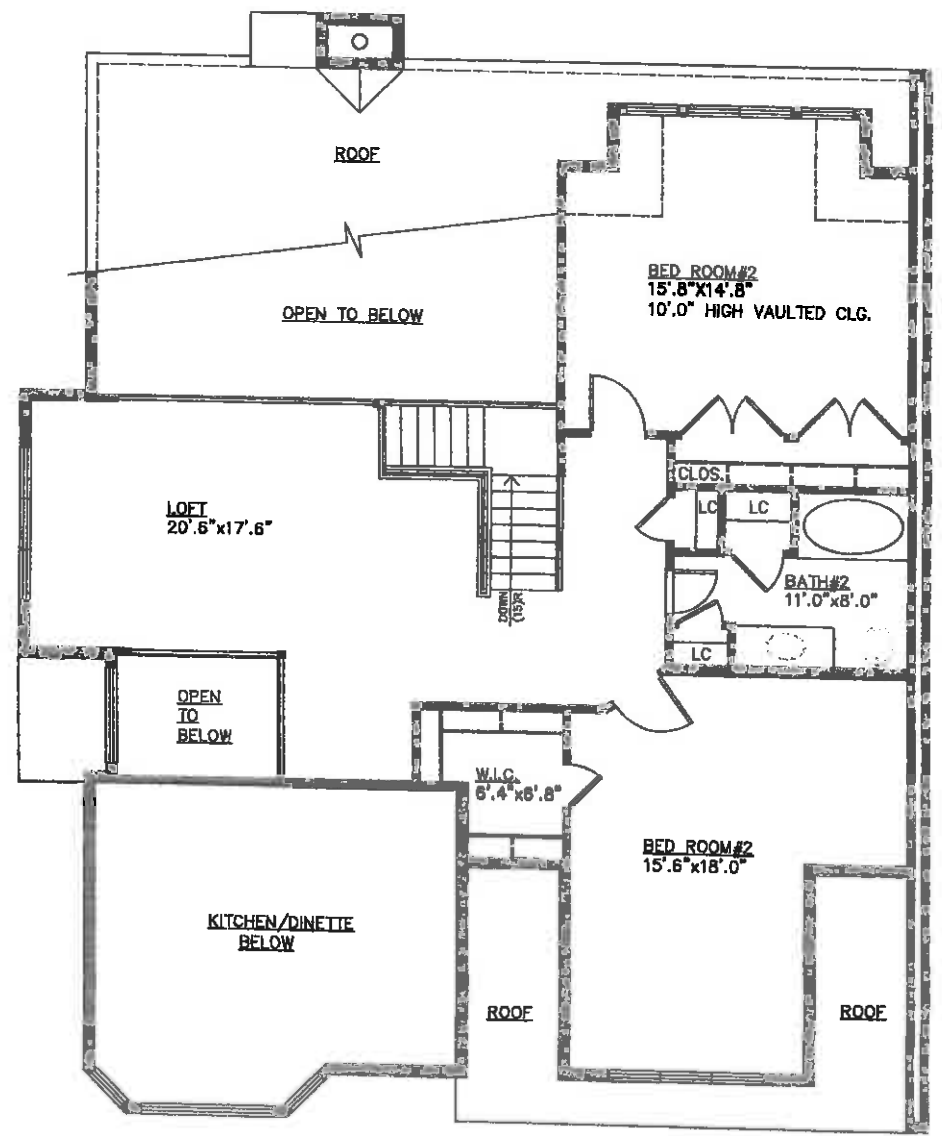
The roomy basement level is ready to customize and pre-stabbed for plumbing. An areawell provides natural light and an egress point for safety.



17 Michael Roberts Court



NOTES:



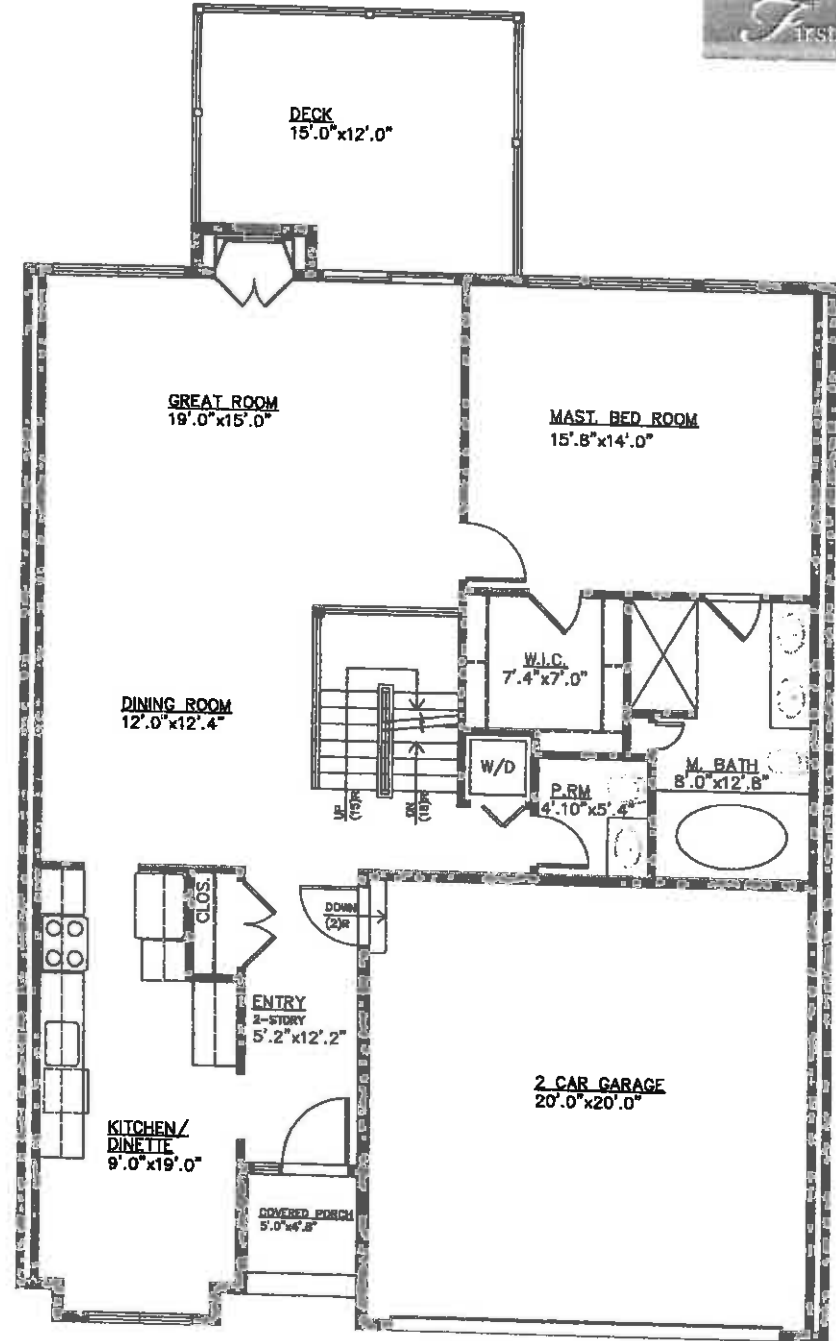
Town Homes

TOTAL SQUARE FEET: 2,015.97

This elegant town home features a covered porch that opens on a two-story foyer, light-filled great room with natural gas fireplace, exquisite dining room with decorative columns, generous patio or deck, gourmet galley kitchen with dinette area, powder room and laundry room. The master bedroom suite enjoys a tray ceiling, walk-in closet and marble-floored bath with whirlpool tub. A generous two car garage opens on to the driveway of paver blocks.

The dramatic staircase leads to a generous loft area, ideal for a home office. The second bedroom features two walk-in closets and an elegant bath with cast iron tub.

The roomy basement level is ready to customize and pre-stubbed for plumbing. An areawell provides natural light and an egress point for safety.



33 Michael Roberts Court

NOTES:

