

**IMPERVIOUS SURFACE CALCULATIONS**

LOT	NEW IMPERVIOUS SURFACE AREA (REMOVED)	NET IMPERVIOUS SURFACE AREA TO BE MITIGATED
LOT 1	3,120 SF	3,120 SF
LOT 2	3,102 SF	-350 SF
LOT 3	3,238 SF	-988 SF
LOT 4	4,391 SF	-2905 SF
LOT 5	3,127 SF	-3,113 SF
<b>TOTAL</b>	<b>16,978 SF</b>	<b>-7,354 SF</b>

74.18-2-35  
N/F  
TAPPAN FIRE DISTRICT

AREA OF DISTURBANCE= 50,593 SF  
AREA=1.16 AC

- TREE LEGEND**
- (12) SIZE IN INCHES (LARGEST DIA SHOWN IN TWIN/TRIPLE)
  - (12) LETTER INDICATES TREE TYPE (SEE BELOW)
  - (12) SECOND NUMBER (2), (3) INDICATES TWIN/TRIPLE
- A = ASH
  - BN = BUTTERNUT
  - B = BIRCH
  - C = CHERRY
  - CM = COTONWOOD
  - L = LOCUST
  - M = MAPLE
  - M/G = MAGNOLIA
  - K = OAK
  - P = PINE
- (12) TREE TO BE REMOVED
  - (12) TREE TO BE PROTECTED

4.375' ROAD WIDENING STRIP TO BE DEDICATED TO THE COUNTY OF ROCKLAND FOR I.C.S. HIGHWAY

CONC CHAMBER  
TOP: 121.0  
24" INV: 115.2 (N-S)  
36" INV: 115.0 (N-W)  
42" INV: 111.4 (OUT-E) SO. PIPE  
42" INV: 111.1 (OUT-E) NO. PIPE

- LEGEND**
- DRAINAGE INLET W/PRESS
  - DRAIN MANHOLE/ WITH PRESS
  - TOP CURB @ CATCH BASIN
  - TOP GRADE FIELD INLET
  - REINFORCED CONCRETE PIPE
  - CORRUGATED PLASTIC PIPE
  - UTILITY POLE
  - UTILITY POLE WITH LIGHT
  - WATER VALVE
  - HYDRANT
  - GAS VALVE
  - OVERHEAD WIRES
  - GAS LINE
  - GAS, ELEC. TEL
  - WATER LINE
  - GAS, ELEC. TEL, CATV
  - CATV, TEL
  - ROOF LEADER
  - CONTOUR LINE
  - SPOT GRADE
  - PROPOSED CONTOUR LINE
  - PROPOSED SPOT GRADE

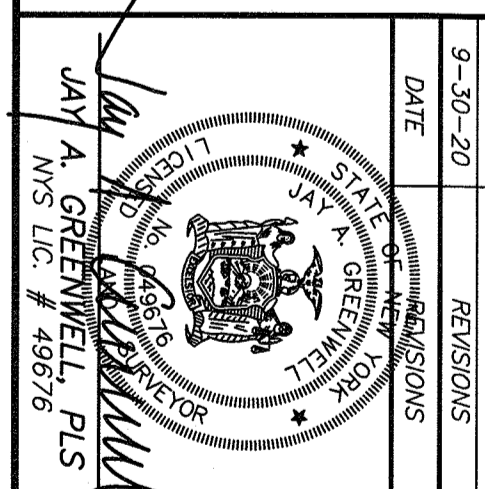
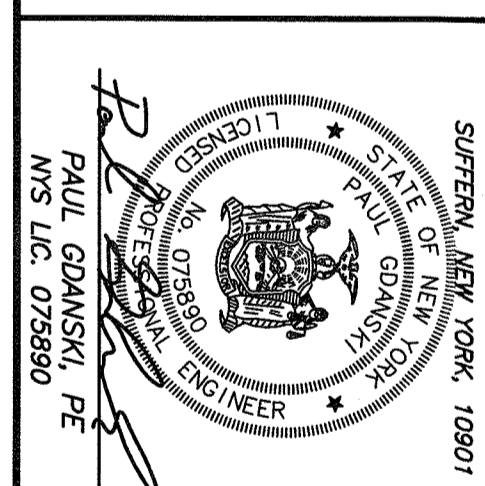
**GRADING, DRAINAGE AND UTILITY PLAN**

**SMK GREENE**

TAPPAN, TOWN OF ORANGETOWN  
ROCKLAND COUNTY, STATE OF NEW YORK

**JAY A. GREENWELL, PLS, LLC**

SURVEYING - LAND PLANNING  
85 LAFAYETTE AVENUE, SUFFERN, NEW YORK, 10901  
PHONE 845-357-0830 FAX 845-357-0756  
© 2020 JAY A. GREENWELL, PLS, LLC



DESIGNER	JAY A. GREENWELL, PLS
DATE	9-30-20
REVISIONS	
TAX LOT #	74.18-2-34
AREA	76,014 SF
FILE	
SCALE	1" = 20'
DATE	7/10/20
JOB NO.	21948



SHADED AREA DEPICTS  
LIMIT OF DISTURBED AREA  
AREA=55,985 SF  
AREA=1,285 AC

74.18-2-35  
N/F  
TAPPAN FIRE DISTRICT

TREE LEGEND

- (12) SIZE IN INCHES (LARGEST DIA SHOWN IN TRUNK/TRIPLE)
- (42) LETTER INDICATES TREE TYPE (SEE BELOW)
- SECOND NUMBER (2), (3) INDICATES TRUNK/TRIPLE

- A = ASH
- BN = BUTTERNUT
- B = BIRCH
- C = CHERRY
- CW = COTTONWOOD
- L = LOCUST
- M = MAPLE
- MG = MAGNOLIA
- K = OAK
- P = PINE

- (12) TREE TO BE REMOVED
- (12) TREE TO BE PROTECTED

NORTH

**GAUSMAN CONSULTANTS, INC.**  
23 RIVERSIDE DRIVE  
SUITE 200, NEW YORK, NY 10901  
PAUL GAUSMAN, PE  
NYS LIC. 073880

**JAY A. GREENWELL, PLS.**  
JAY A. GREENWELL, PLS.  
NYS LIC. # 43878

**SMK GREENE**  
TAPPAN, TOWN OF ORANGETOWN  
ROCKLAND COUNTY, STATE OF NEW YORK

**JAY A. GREENWELL, PLS., LLC**  
SUBDIVISION - LAND PLANNING  
85 LAFAYETTE SUITE 200, NEW YORK, NY 10901  
PHONE 845-357-0930  
© 2020 JAY A. GREENWELL, PLS., LLC

TAX LOT # 74.18-2-34  
AREA 76,014 SF  
FILE 2-2198 ERO DISTURB  
SCALE 1" = 20'  
DATE 7/10/20  
JOB NO. 21948

- LEGEND**
- CONCRETE CHAMBER
  - CONSTRUCTION ENTRANCE
  - SILT FENCE
  - INLET PROTECTION
  - DRAINAGE INLET W/PRESS
  - DRAIN MANHOLE WITH BASK
  - TOP CURB @ CATCH BASIN
  - TOP GRADE FIELD INLET
  - REINFORCED CONCRETE PIPE
  - CORRUGATED PLASTIC PIPE
  - UTILITY POLE WITH LIGHT
  - UTILITY VALVE
  - WATER VALVE
  - HYDRANT
  - GAS VALVE
  - GAS LINE
  - GAS, ELEC. TEL
  - WATER LINE
  - GAS, ELEC. TEL, CTRY
  - CTRY, TEL
  - ROOF LEADER
  - CONTOUR LINE
  - SPOT GRADE
  - PROPOSED CONTOUR LINE
  - PROPOSED SPOT GRADE

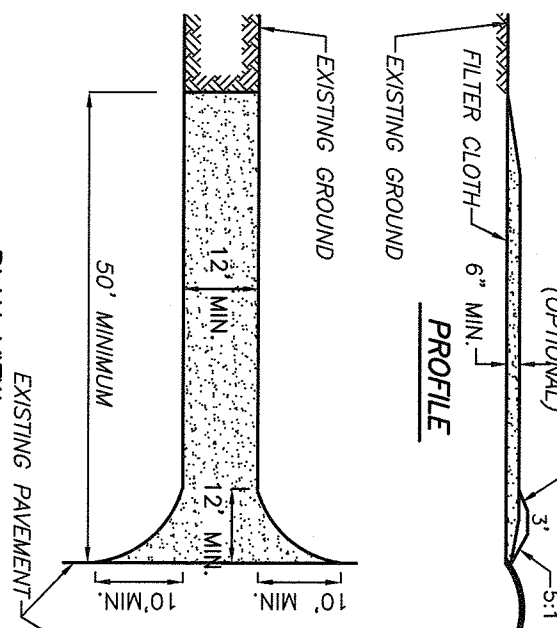
4.375' ROAD WIDENING STRIP  
TO BE DEDICATED TO THE  
COUNTY OF ROCKLAND  
PER R.C. HIGHWAY

CONC CHAMBER  
TOP 121.0  
2.4' INV:115.9 (IN-S)  
3.6' INV:115.5 (IN-B)  
4.2' INV:114.4 (OUT-E) SO. PIPE  
4.2' INV:111.1 (OUT-E) NO. PIPE

74.18-3-48  
N/F  
HOMES FOR HEROES INC

- LEGEND FOR EROSION CONTROL DURING CONSTRUCTION**
- CONSTRUCTION ENTRANCE
  - CONTRIBUTION 12' x 50'
  - SILT FENCE
  - INLET PROTECTION

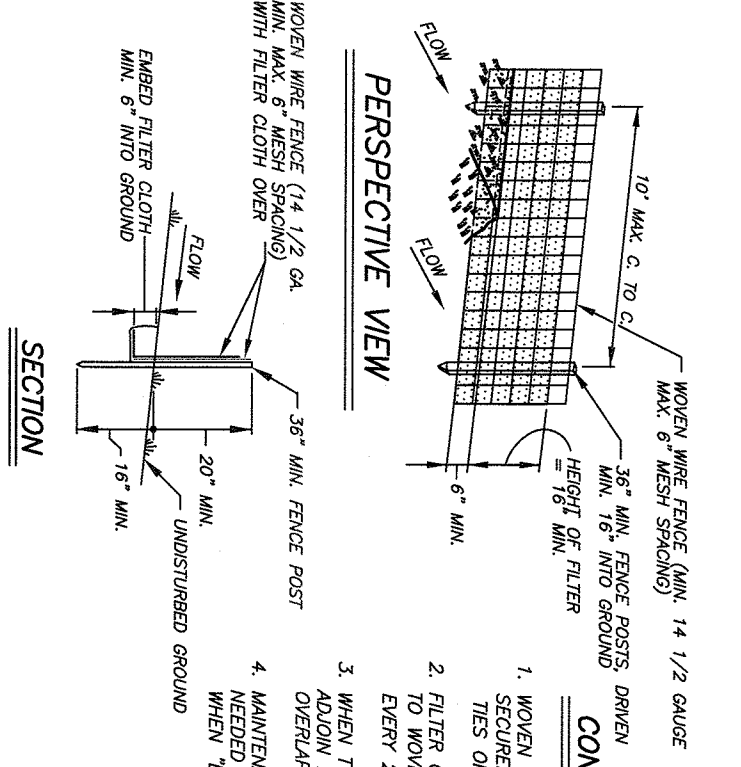
**CONSTRUCTION SPECIFICATIONS**



1. STONE SIZE - USE 2" STONE OR RECYCLED OR BLENDED LENGTH - NOT LESS THAN 50 FEET (EXCEPT ON A SINGLE AREA).
2. LENGTH - NOT LESS THAN 1.50 FOOT MINIMUM LENGTH MINUS 4 FEET (1).
3. THICKNESS - NOT LESS THAN (8) INCHES.
4. WIDTH - THICK (12) FOOT MINIMUM, BUT NOT LESS THAN THIN (10) FOOT MINIMUM.
5. FILTER CLOTH - WILL BE PLACED OVER THE ENTIRE AREA PRIOR TO POURING OF STONE. SURFACE WITH FORMING OR BARRING TRENCH-CURB (6) FOOT SINGLE ENTRANCE TO SIZE TOWARD CONSTRUCTION ENTRANCES SHALL A WORKING BEAM WITH 5/16" SPACERS WILL BE PERMITTED.
6. MAINTENANCE - THE ENTRANCE SHALL BE MAINTAINED IN A CONDITION TO ALLOW PROPER FLOW OF WATER. STORMWATER SHALL BE COLLECTED AND DISPOSED OF PROPERLY. IF IT IS NOT COLLECTED AND DISPOSED OF PROPERLY, IT SHALL BE DONE ON AN AREA STABILIZED WITH STONE AND WHICH DRAINS INTO AN APPROVED AFTER EACH RAIN.
7. MAINTENANCE - THE ENTRANCE SHALL BE MAINTAINED IN A CONDITION TO ALLOW PROPER FLOW OF WATER. STORMWATER SHALL BE COLLECTED AND DISPOSED OF PROPERLY. IF IT IS NOT COLLECTED AND DISPOSED OF PROPERLY, IT SHALL BE DONE ON AN AREA STABILIZED WITH STONE AND WHICH DRAINS INTO AN APPROVED AFTER EACH RAIN.

**STABILIZED CONSTRUCTION ENTRANCE**

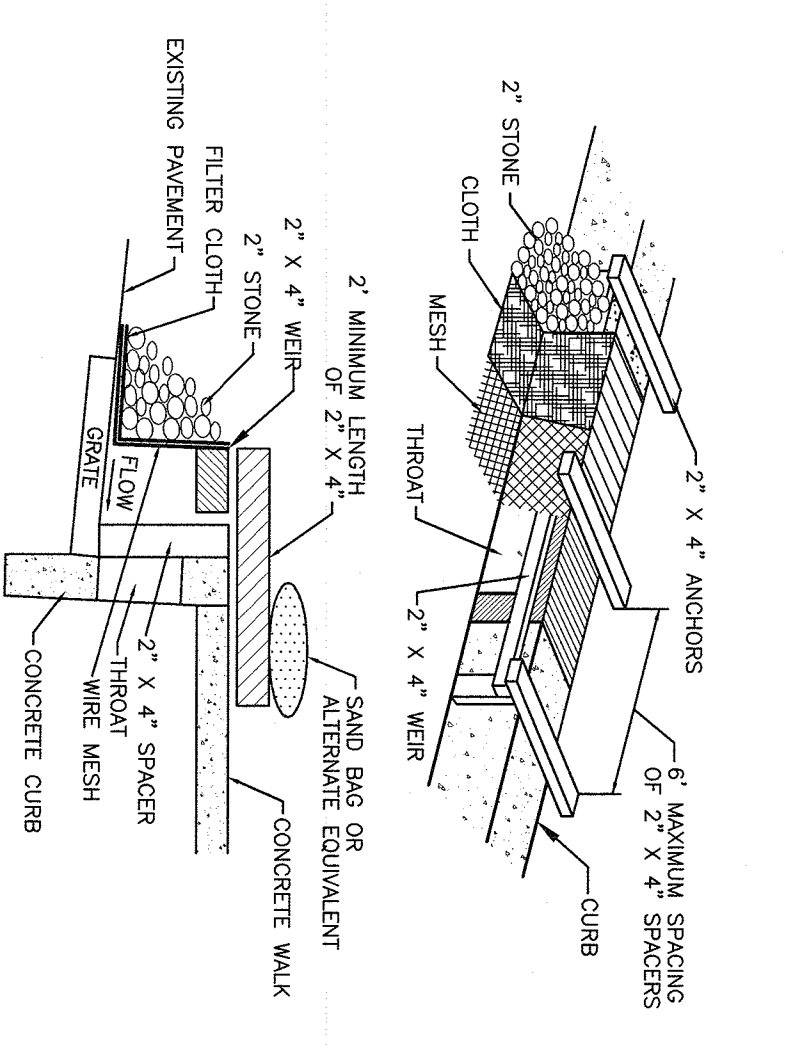
N/S



- CONSTRUCTION NOTES FOR FABRICATED SILT FENCE**
1. WIRE REINFORCED SILT FENCE TO BE FASTENED TO EXISTING PAVEMENT WITH WIRE SPACERS OR STAPLES.
  2. FILTER CLOTH TO BE FASTENED TO EXISTING PAVEMENT WITH WIRE SPACERS EVERY 24" AT TOP AND BOTTOM.
  3. WHEN TWO SECTIONS OF FILTER CLOTH ARE JOINED, THE JOINT SHALL BE REINFORCED WITH WIRE SPACERS AND FASTENED TO EXISTING PAVEMENT.
  4. MAINTENANCE SHALL BE PERFORMED AS NEEDED AND MATERIAL REMOVED AS WHEN BLOCKS DEVELOP IN THE SILT FENCE.

**WIRE REINFORCED SILT FENCE**

N/S

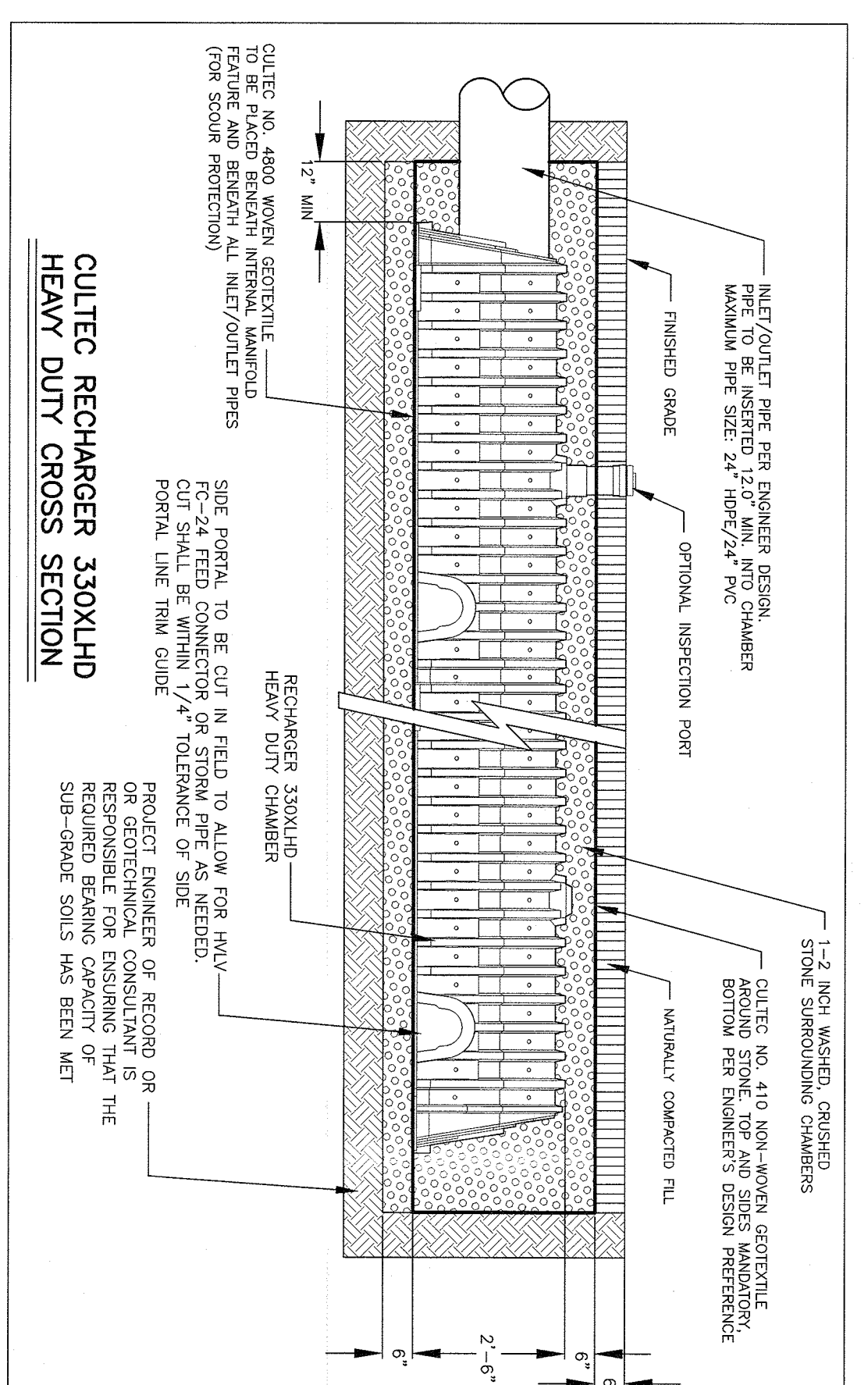
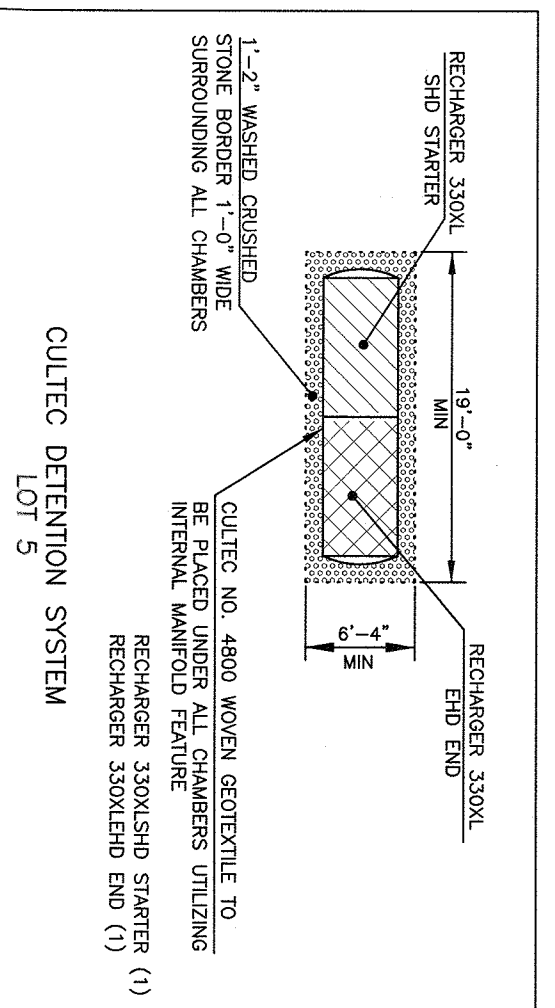
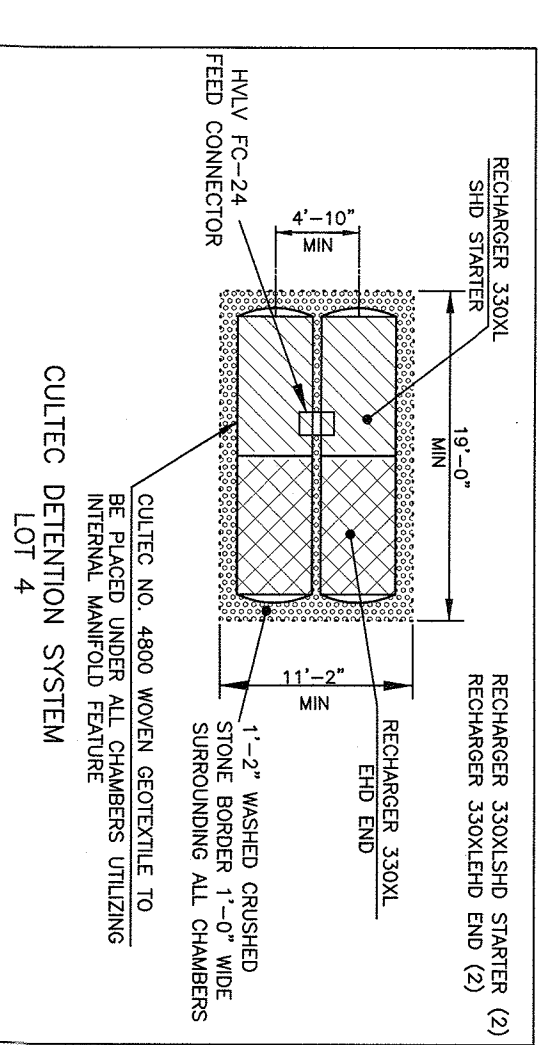
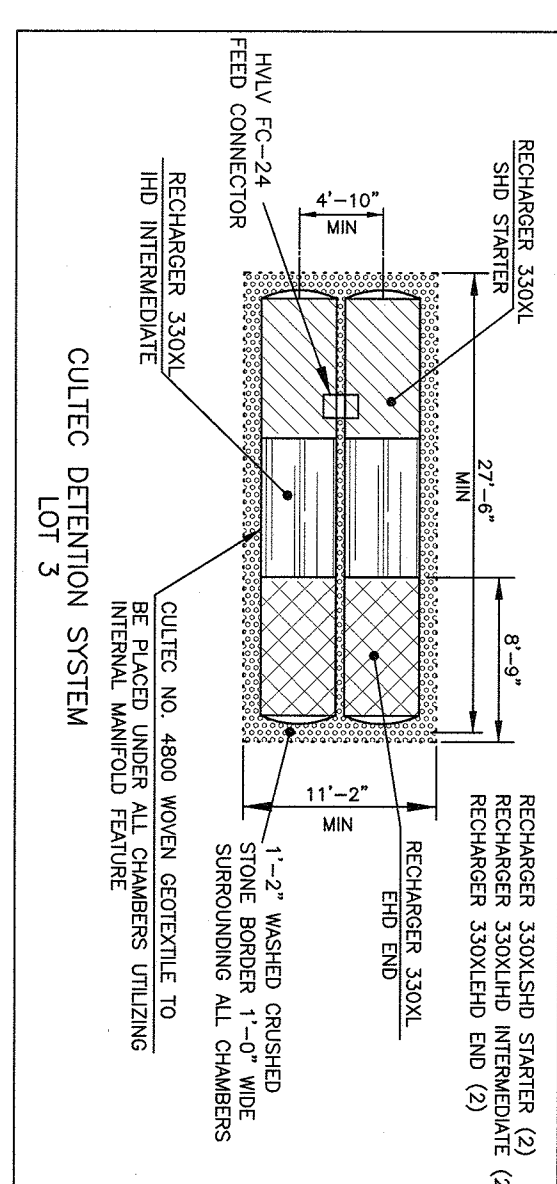
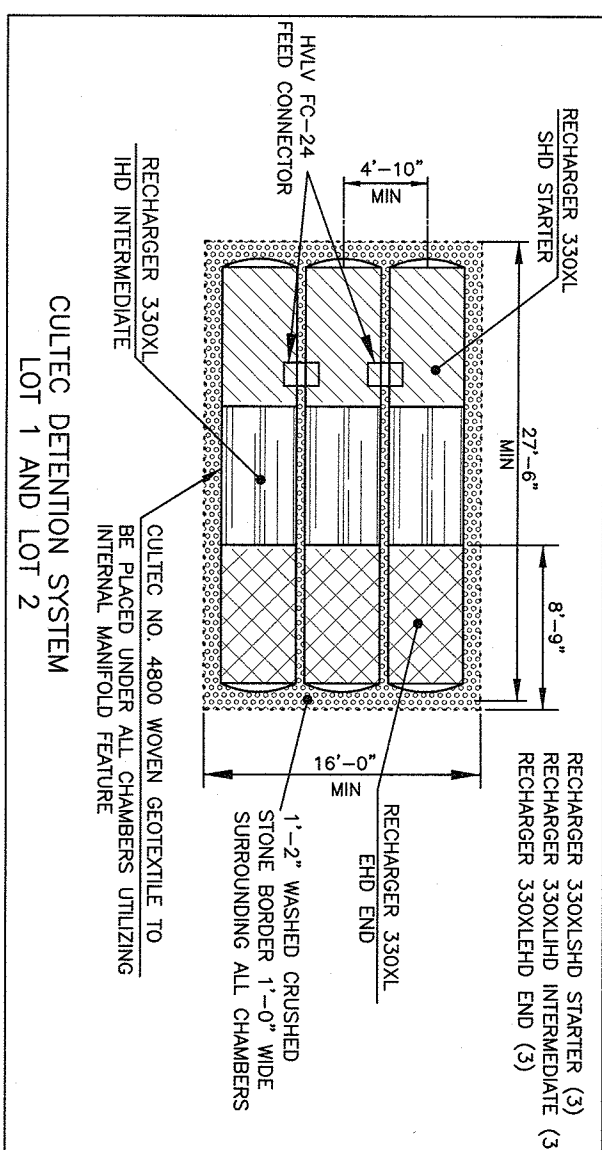


**CONSTRUCTION SPECIFICATIONS**

1. FILTER FABRIC SHALL HAVE AN EOS OF 40-85.
2. WOODEN FRAME SHALL BE CONSTRUCTED OF 2" X 4" CONSTRUCTION GRADE LUMBER.
3. WIRE MESH CROSS FRAME SHALL BE A CONTINUOUS PIECE 30 INCH MINIMUM LENGTH. FEET LONGER THAN THE CURB LENGTH. IT SHALL BE SHAPED AND SECURELY NAILED TO A 2" X 4" WEIR.
4. THE WEIR SHALL BE SECURELY NAILED TO 2" X 4" SPACERS.
5. 3 INCHES LONG SPACERS NO MORE THAN 6 FEET APART, SECURED BY 2" X 4" ANCHORS 2 FEET LONG EXTENDING ACROSS THE TOP OF THE INLET AND HELD IN PLACE BY SANDBAGS OR ALTERNATE WEIGHTS.

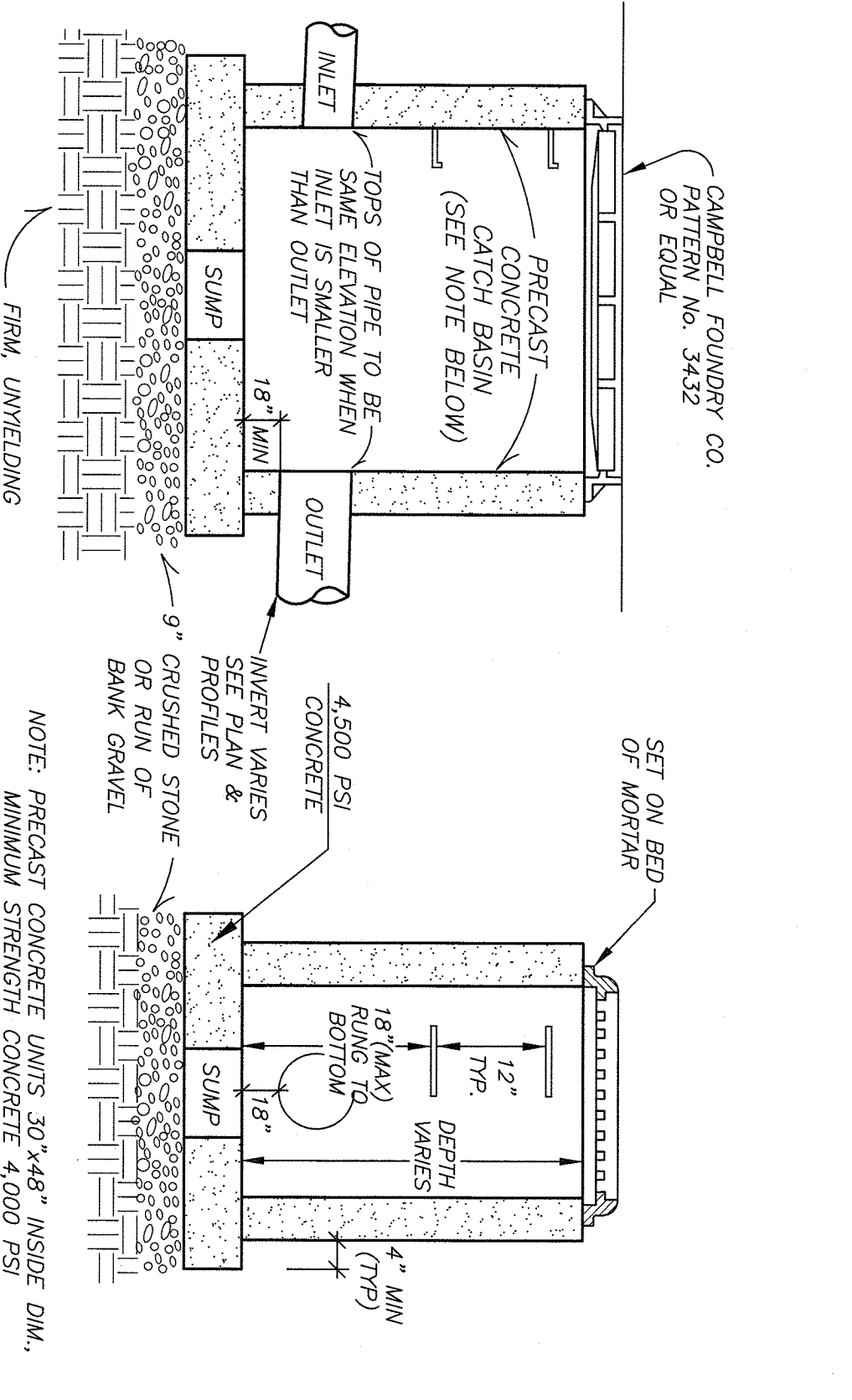
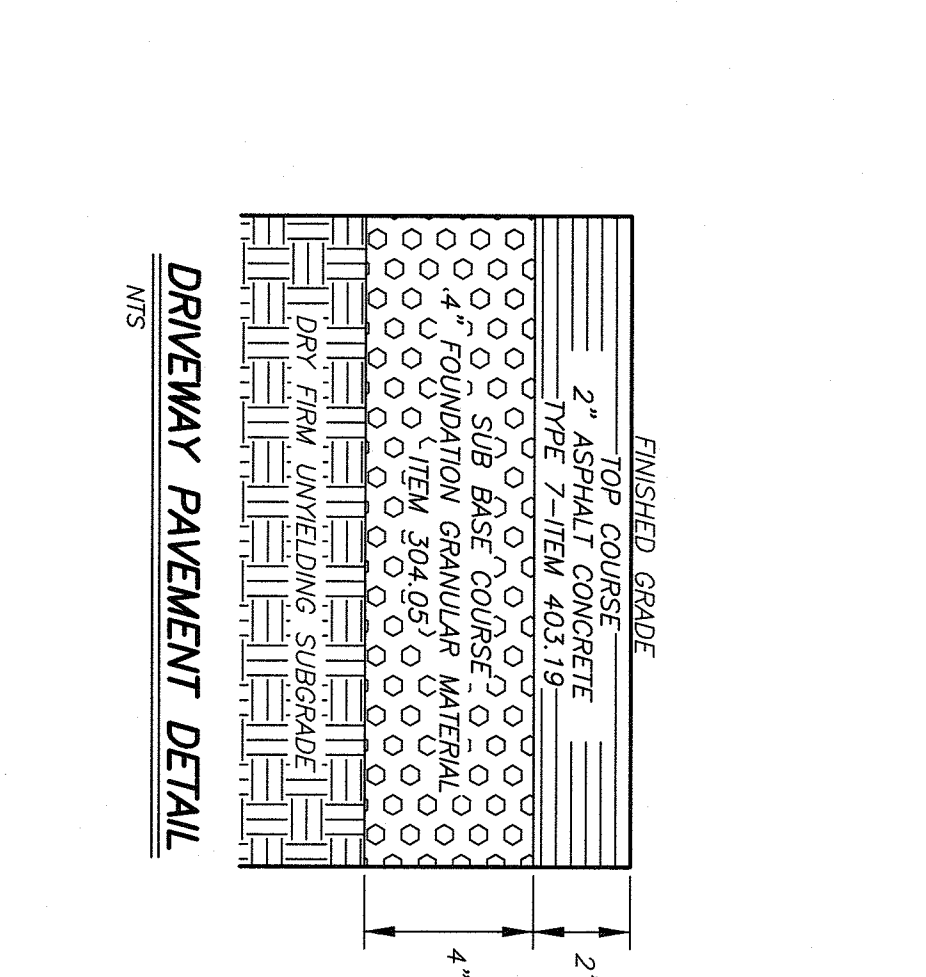
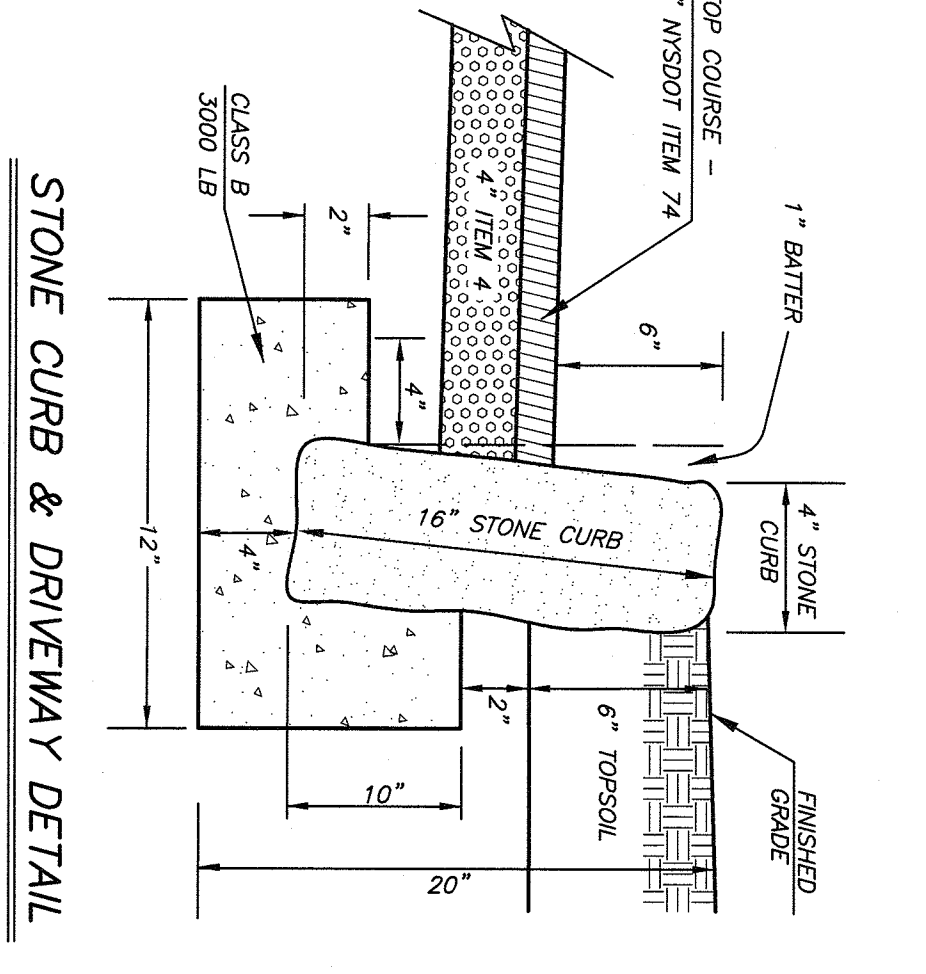
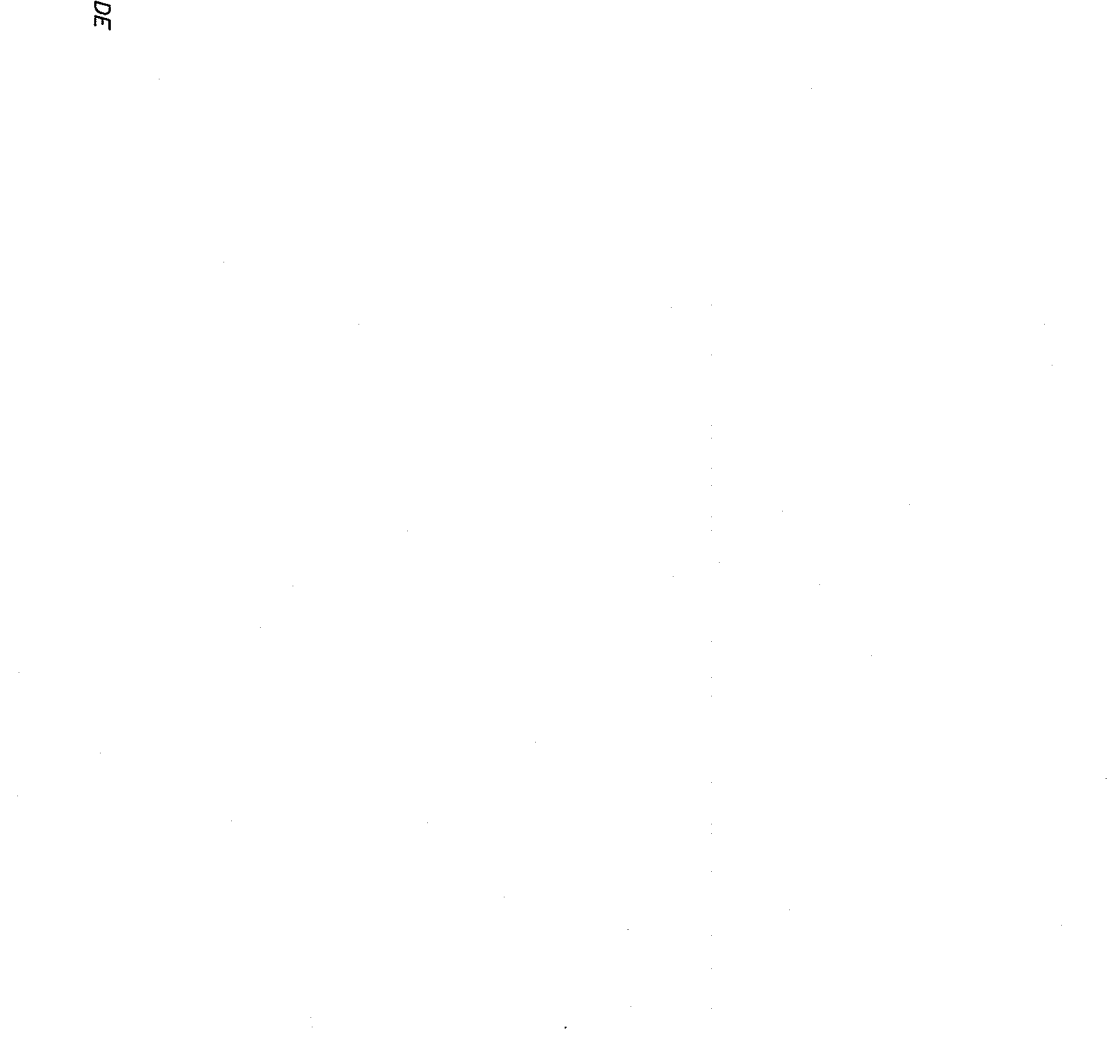
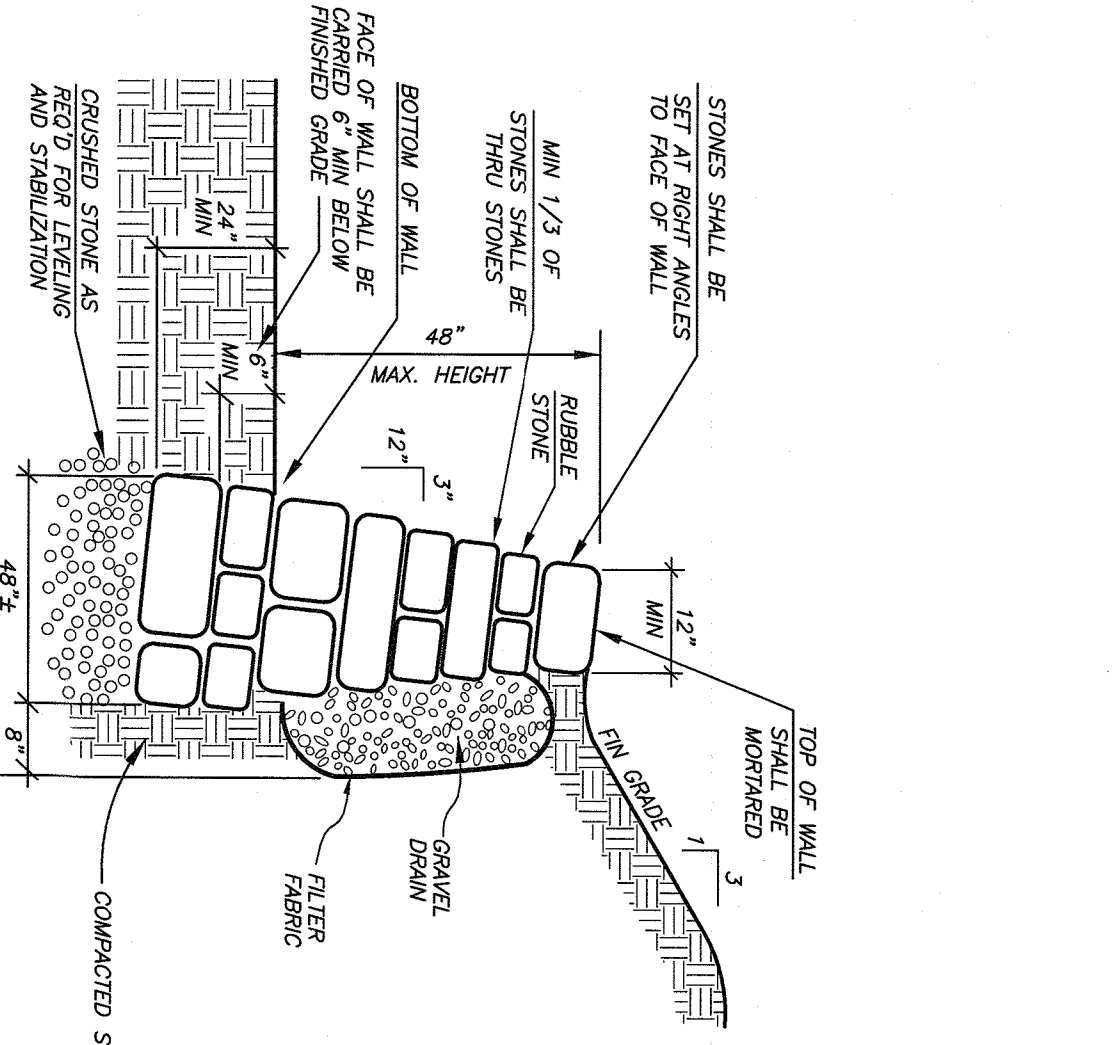
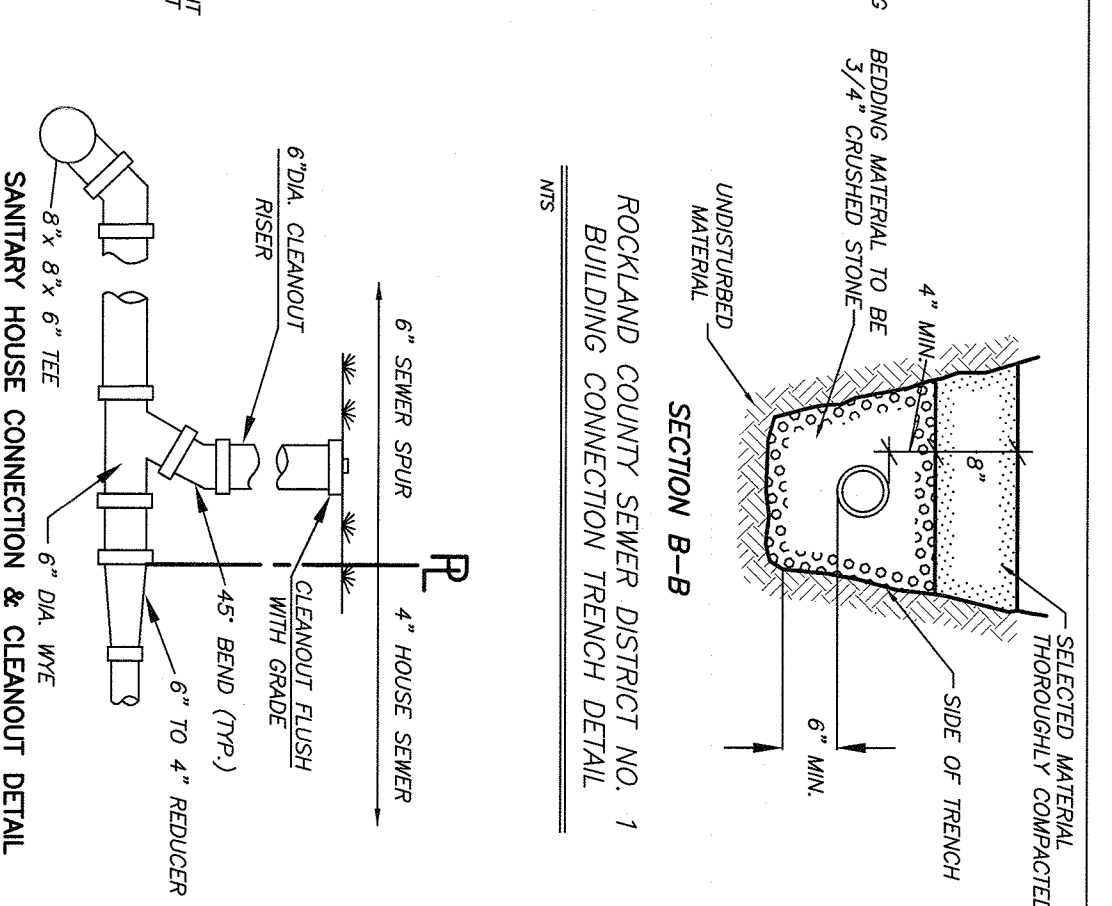
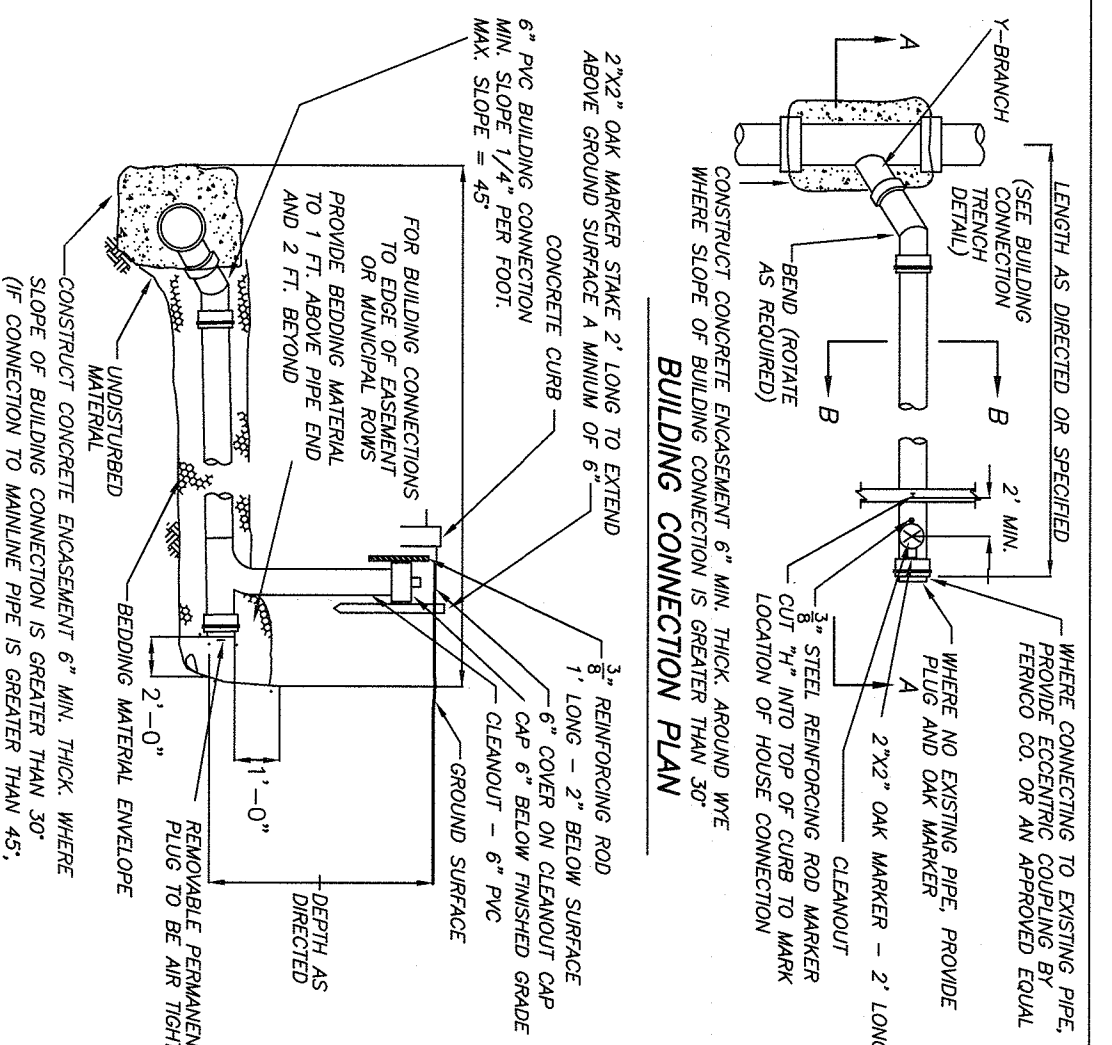
**CURB INLET PROTECTION**

N/S



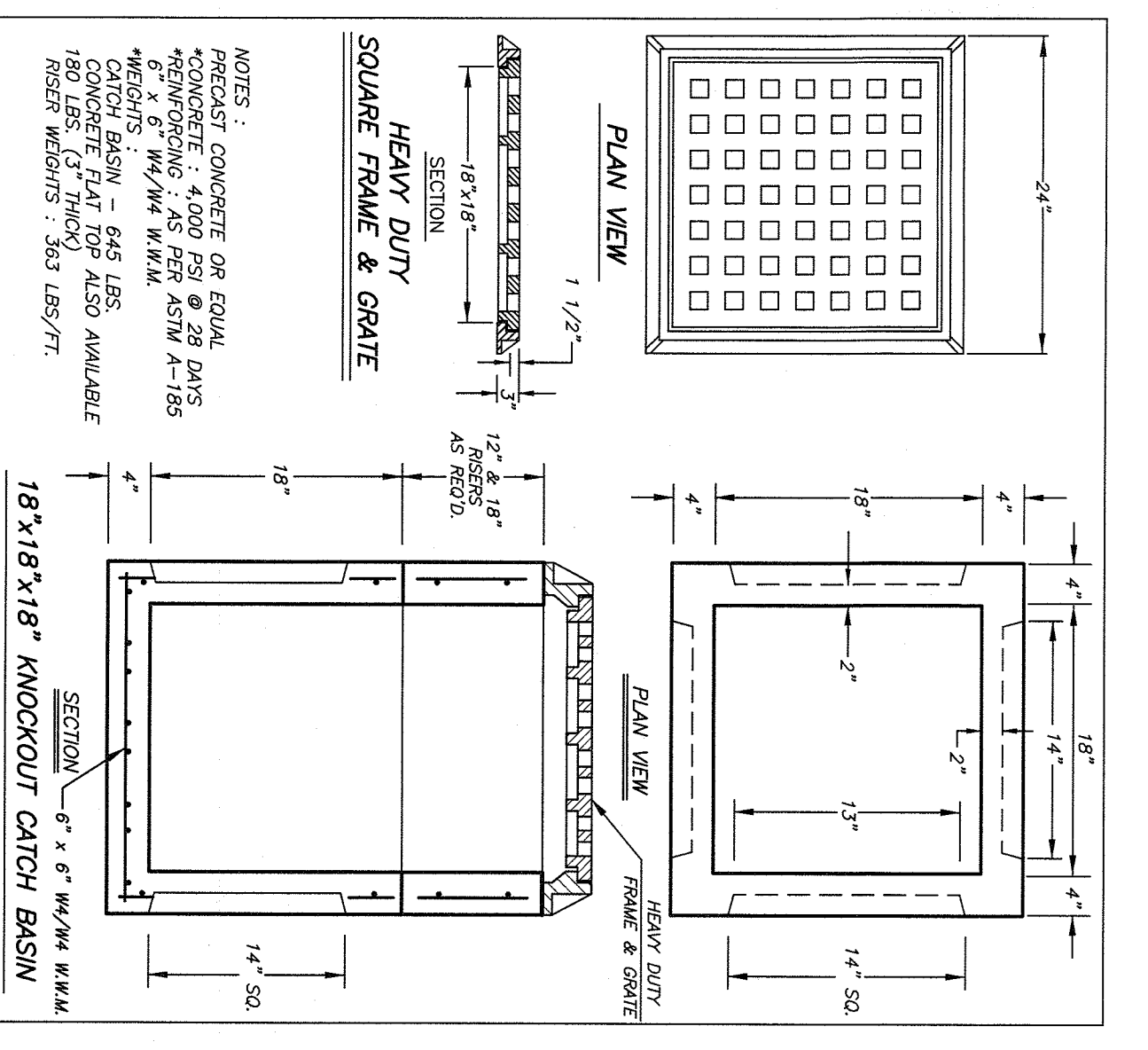
**CULTEC RECHARGER 330XLHD HEAVY DUTY CROSS SECTION**

N/S



**FIELD INLET DETAIL**

N/S



**HEAVY DUTY SQUARE FRAME & GRATE**

NOTES:  
PRECAST CONCRETE OR EQUAL  
CONCRETE: 4,000 PSI @ 28 DAYS  
4" X 6" W/W/M W.W.M. 18" X 18"  
WELDED WIRE MESH: 304 (52)  
CONCRETE FLAT TOP ALSO AVAILABLE  
RESER WEIGHTS: 163 LBS/FT.

**DETAIL SHEET**

SMK GREENE

AREA  
FILE  
21948 DETAILS  
SCALE  
1" = 30'

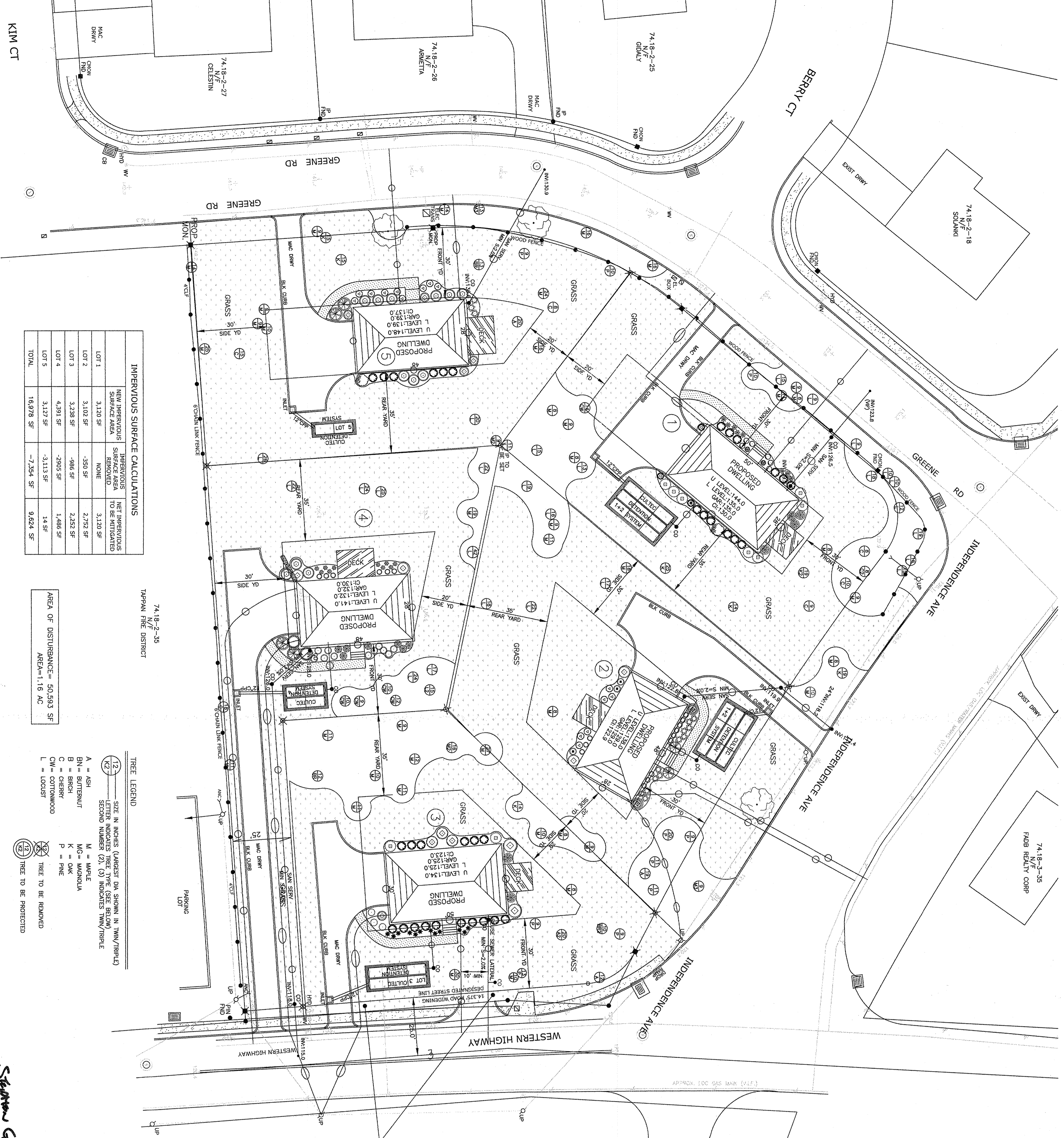
JAY A GREENWELL, PLS, LLC  
SURVEYING - LAND PLANNING  
85 LAFAYETTE AVENUE, SUFFERN, NEW YORK, 10901  
PHONE: 845-357-0830 FAX: 845-357-0736

DATE  
DEC. 5, 2019  
JOB NO.  
21948

GAUSKOPF CONSULTANTS, INC.  
25 INVERSIDE DRIVE  
SUFFERN, NEW YORK, 10901  
PAUL GAUSKOPF, PE  
NYS LIC. 0728990

JAY A. GREENWELL, PLS  
NYS LIC. # 28978

JAY A. GREENWELL, PLS, LLC  
SURVEYING - LAND PLANNING  
85 LAFAYETTE AVENUE, SUFFERN, NEW YORK, 10901  
PHONE: 845-357-0830 FAX: 845-357-0736



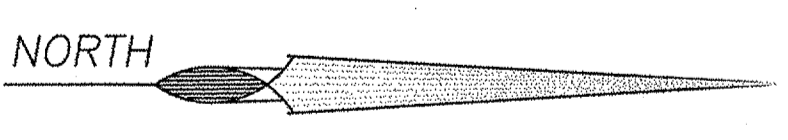
**IMPERVIOUS SURFACE CALCULATIONS**

LOT #	NEW IMPERVIOUS SURFACE AREA	IMPERVIOUS SURFACE AREA REMOVED	NET IMPERVIOUS SURFACE AREA TO BE INSTALLED
LOT 1	3,120 SF	NONE	3,120 SF
LOT 2	3,102 SF	-360 SF	2,742 SF
LOT 3	3,238 SF	-986 SF	2,252 SF
LOT 4	4,391 SF	-2905 SF	1,486 SF
LOT 5	3,127 SF	-3,113 SF	14 SF
TOTAL	16,978 SF	-7,354 SF	9,624 SF

74.18-2-35  
TAPPAN FIRE DISTRICT

AREA OF DISTURBANCE= 50,593 SF  
AREA=1.16 AC

- TREE LEGEND**
- SIZE IN INCHES (LARGEST DIM SHOWN IN THIN/TRIPLE)  
LETTER INDICATES TREE TYPE (SEE BELOW)  
SECOND NUMBER (2), (3) INDICATES THIN/TRIPLE
- A = ASH
  - BN = BUTTERNUT
  - C = CHERRY
  - CW = COTTONWOOD
  - L = LOCUST
  - M = MAPLE
  - MG = MAGNOLIA
  - K = OAK
  - P = PINE
- ⊕ TREE TO BE REMOVED  
⊗ TREE TO BE PROTECTED



4.375' ROAD WIDENING STRIP TO BE DEDICATED TO THE COUNTY OF ROCKLAND FOR R.C. HIGHWAY

74.18-3-48  
HOMES FOR HEROES INC

*Stephen Garcia*  
#ASVA  
783016

DATE	REVISIONS

**GRADING, DRAINAGE AND UTILITY PLAN WITH EROSION CONTROL**

**SMK GREENE**

TAPPAN, TOWN OF ORANGETOWN  
ROCKLAND COUNTY, STATE OF NEW YORK

**JAY A. GREENWELL, PLS, LLC**

SURVEYING - LAND PLANNING  
85 LAVAFRETTE AVENUE, SUITE 9, NEW YORK, 10901  
PHONE 845-357-0830 FAX 845-357-0756  
© 2020 JAY A. GREENWELL PLS, LLC

TAX LOT #	74.18-2-34
AREA	76,014 SF
FILE	2-21848 GRADE 5
SCALE	1" = 20'
DATE	7/10/20
JOB NO.	21948

Landscape Master Plan  
9/26/2020

**SMK GREENE**  
Tappan, Town of Orangetown  
Rockland County, State of New York  
Tax Lot # 74.18-2-34 House # 3

Steve Griggs Design  
76 Spruce Street, Blauvelt, NY 10913  
914-879-5602  
steve@stevegriggsdesign.com