

PLANT LIST

| Symb | Scientific Name | Common Name | Qty | Size |
|------|--------------------------------------|----------------------|----------|------------|
| | Azalea karume 'Coral Bells' | Coral Bells Azalea | 3 | 3 gal |
| | Buxus x Winter Gem | Winter Gem Boxwood | 6 | 3 gal |
| | Cornus kousa | Kousa Dogwood | 2 | 2" cal B&B |
| | Ilex crenata 'Chesapeake' | Chesapeake Holly | 4 | 3 gal |
| | Juniperus chinensis 'Gold Coast' | Gold Coast Juniper | 9 | 3 gal |
| | Juniperus horizontalis 'Wiltonii' | Blue Rug Juniper | 2 | 3 gal |
| | Weigela florida 'Spilled Wine' | Spilled Wine Weigela | 9 | 3 gal |
| | Weigela florida 'Variegata' | Variegated Weigela | 1 | 3 gal |
| | Grass | | 11639 sf | |

Landscape Plan
9/26/2020

SMK GREENE

Tappan, Town of Orangetown
Rockland County, State of New York
Tax Lot # 74.18-2-34 House #5

Steve Griggs Design

76 Spruce Street, Blauvelt, NY 10913
914-879-5602

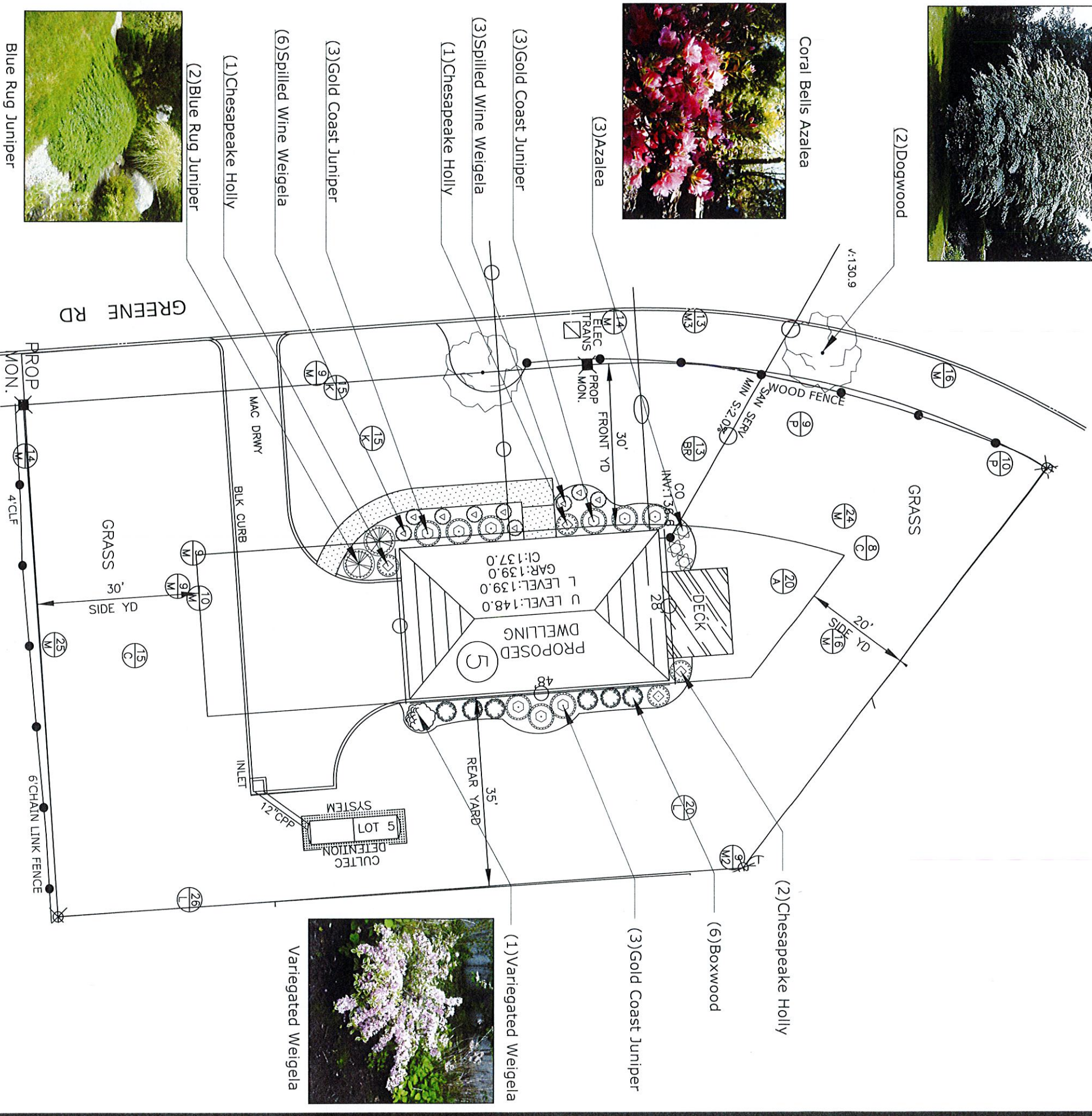
steve@stevegriggsdesign.com



Kousa Dogwood



Coral Bells Azalea



Variegated Weigela



Blue Rug Juniper

Landscape Plan
9/26/2020

SMK GREENE
Tappan, Town of Orangetown
Rockland County, State of New York
Tax Lot # 74.18-2-34 House #4

Handwritten signature and notes:
83076

Steve Griggs Design
76 Spruce Street, Blauvelt, NY 10913
914-879-5602
steve@stevegriggsdesign.com

Gold Coast Juniper



Endless Summer Hydrangea



Miss Kim Lilac

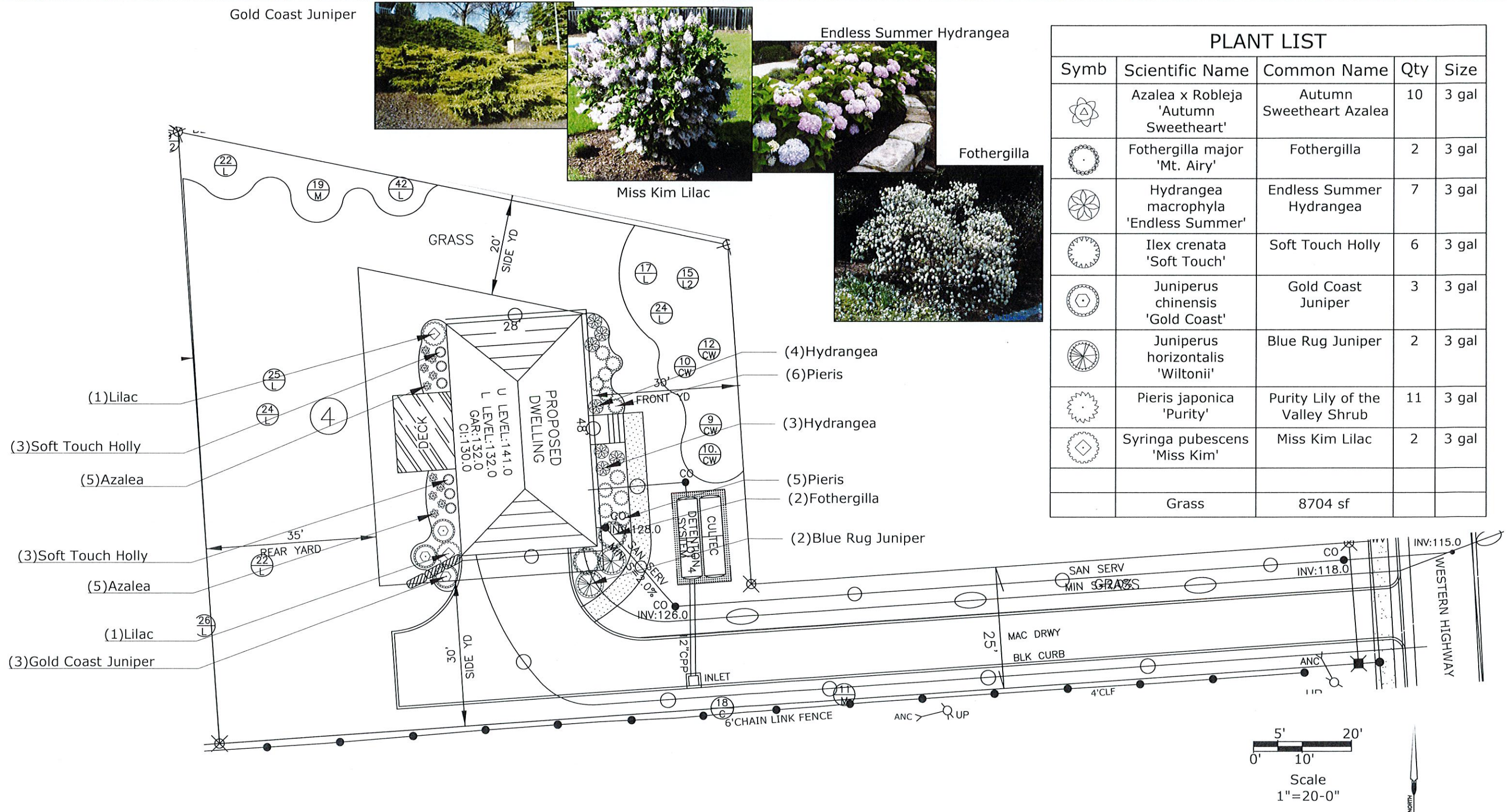


Fothergilla



PLANT LIST

| Symb | Scientific Name | Common Name | Qty | Size |
|------|----------------------------------------|---------------------------------|-----|-------|
| | Azalea x Robleja 'Autumn Sweetheart' | Autumn Sweetheart Azalea | 10 | 3 gal |
| | Fothergilla major 'Mt. Airy' | Fothergilla | 2 | 3 gal |
| | Hydrangea macrophylla 'Endless Summer' | Endless Summer Hydrangea | 7 | 3 gal |
| | Ilex crenata 'Soft Touch' | Soft Touch Holly | 6 | 3 gal |
| | Juniperus chinensis 'Gold Coast' | Gold Coast Juniper | 3 | 3 gal |
| | Juniperus horizontalis 'Wiltonii' | Blue Rug Juniper | 2 | 3 gal |
| | Pieris japonica 'Purity' | Purity Lily of the Valley Shrub | 11 | 3 gal |
| | Syringa pubescens 'Miss Kim' | Miss Kim Lilac | 2 | 3 gal |
| | Grass | 8704 sf | | |



(1)Lilac

(3)Soft Touch Holly

(5)Azalea

(3)Soft Touch Holly

(5)Azalea

(1)Lilac

(3)Gold Coast Juniper

(4)Hydrangea

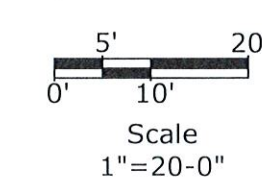
(6)Pieris

(3)Hydrangea






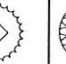
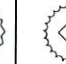
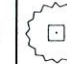
(5)Pieris

(2)Fothergilla

(2)Blue Rug Juniper



PLANT LIST

| Symb | Scientific Name | Common Name | Qty | Size |
|-------------------------------------------------------------------------------------|---------------------------------------------|-------------------------|---------|-------|
|  | Buddleia x Lilac Chip | Dwarf Butterfly Bush | 12 | 3 gal |
|  | Buxus x Winter Gem | Winter Gem Boxwood | 16 | 3 gal |
|  | Cornus alba 'Bailhalo' | Ivory Halo Dogwood | 3 | 3 gal |
|  | Hydrangea macrophylla 'Nikko Blue' | Nikko Blue Hydrangea | 2 | 3 gal |
|  | Ilex crenata 'Chesapeake' | Chesapeake Holly | 1 | 5 gal |
|  | Prunus laurocerasus 'Schipkaensis' | Schip Laurel | 2 | 5 gal |
|  | Rhododendron x PJM | PJM Rhododendron | 2 | 3 gal |
|  | Rhododendron x Conifer 'Autumn Cheer' | Autumn Cheer Azalea | 3 | 3 gal |
| | Grass | | 8510 sf | |

Landscape Plan
9/26/2020

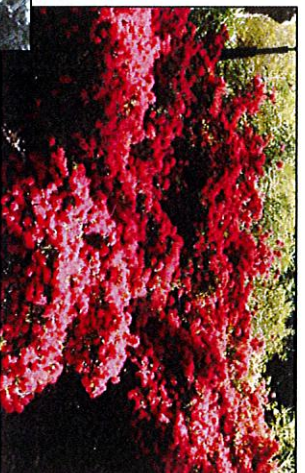
SMK GREENE

Tappan, Town of Orangetown
Rockland County, State of New York
Tax Lot # 74.18-2-34 House #3

ASL
1783016
Steve Griggs
Steve Griggs Design
76 Spruce Street, Blaauvelt, NY 10913
914-879-5602
steve@stevegriggsdesign.com



Dwarf Butterfly Bush



Autumn Cheer Azalea



Ivory Halo Dogwood



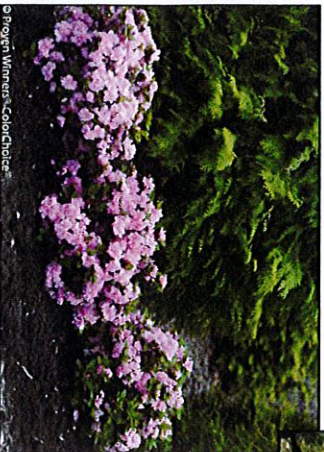
Landscape Plan
9/26/2020

SMK GREENE
Tappan, Town of Orangetown
Rockland County, State of New York
Tax Lot # 74.18-2-34 House #2

650
783076
Steve Griggs Design
76 Spruce Street, Blaauvelt, NY 10913
914-879-5602
steve@stevegriggsdesign.com

PLANT LIST

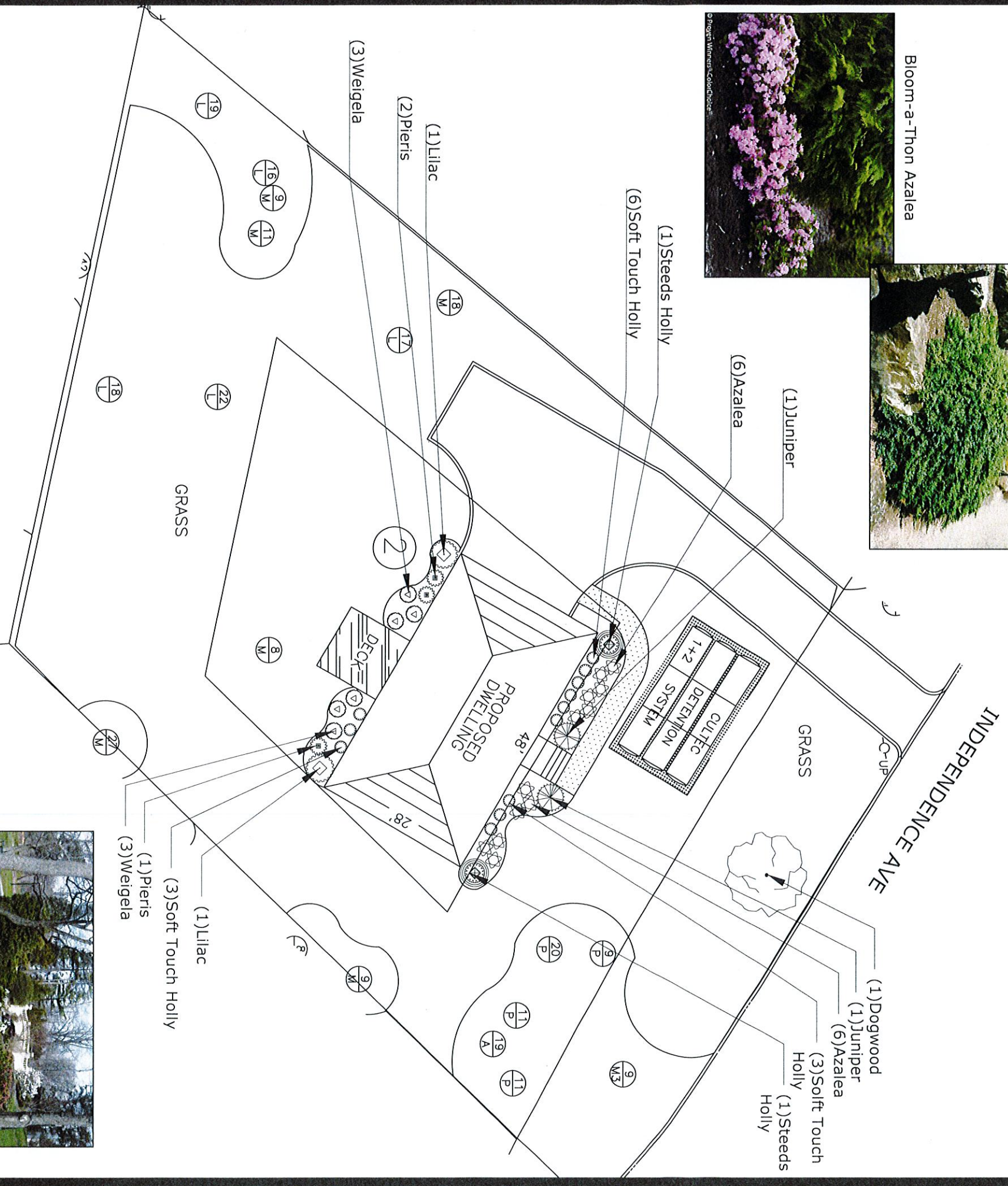
| Symb | Scientific Name | Common Name | Qty | Size |
|------|--------------------------------|----------------------|----------|------------|
| | Azalea | Bloom-a-Thon Azalea | 12 | 3 gal |
| | 'Bloom-a-Thon' | Azalea | | |
| | Cornus kousa | Kousa Dogwood | 1 | 2" cal B&B |
| | Ilex crenata 'Steeds' | Steeds Holly | 2 | 3 gal |
| | Ilex crenata 'Soft Touch' | Soft Touch Holly | 12 | 3 gal |
| | Juniperus procumbens 'Nana' | Dwarf Garden Juniper | 2 | 3 gal |
| | Pieris japonica 'Compacta' | Japanese Andromeda | 3 | 3 gal |
| | Syringa pubescens 'Miss Kim' | Miss Kim Lilac | 2 | 3 gal |
| | Weigela florida 'Spilled Wine' | Spilled Wine Weigela | 6 | 3 gal |
| | Grass | | 10817 sf | |



Bloom-a-Thon Azalea



Dwarf Garden Juniper





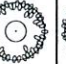
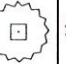





Japanese Andromeda

Scale
1"=20'-0"
0' 5' 10' 20'



PLANT LIST

| Symb | Scientific Name | Common Name | Qty | Size |
|-------------------------------------------------------------------------------------|------------------------------------|------------------------|-----|-------|
|  | Buxus x Green Mountain | Green Mountain Boxwood | 2 | 3 gal |
|  | Buxus x Winter Gem | Winter Gem Boxwood | 12 | 3 gal |
|  | Hydrangea macrophylla 'Nikko Blue' | Nikko Blue Hydrangea | 4 | 3 gal |
|  | Ilex x meserveae 'Blue Girl' | Blue Girl Holly | 2 | 5 gal |
|  | Ilex x meserveae 'Blue Boy' | Blue Boy Holly | 1 | 5 gal |
|  | Rhododendron x PJM | PJP Rhododendron | 7 | 3 gal |
|  | Rosa x Flower Carpet | Flower Carpet Rose | 8 | 3 gal |
|  | Spiraea japonica 'Gold Mound' | Gold Mound Spirea | 6 | 3 gal |
|  | Weigela florida 'Variegata' | Variegated Weigela | 1 | 5 gal |
| | Grass | 9545 sf | | |

Landscape Plan
9/26/2020

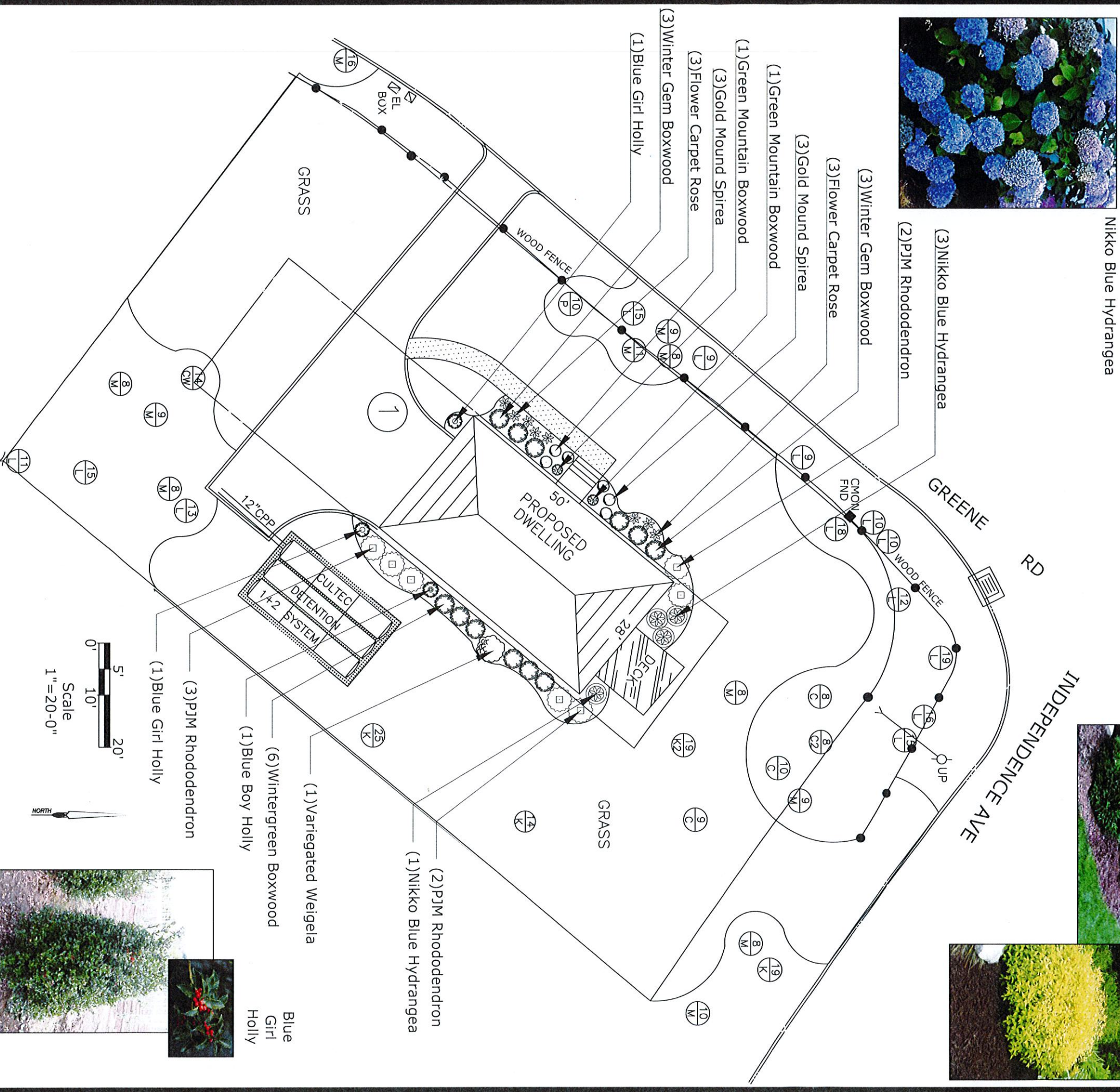
SMK GREENE

Tappan, Town of Orangetown
Rockland County, State of New York
Tax Lot # 74.18-2-34 House # 1

79 3076
A. B. R. W.

Steve Griggs Design
76 Spruce Street, Bauvelt, NY 10913
914-879-5602
steve@stevegriggsdesign.com

Steve Griggs
Green Mountain Boxwood



Gold Mound Spirea

Blue Girl Holly

