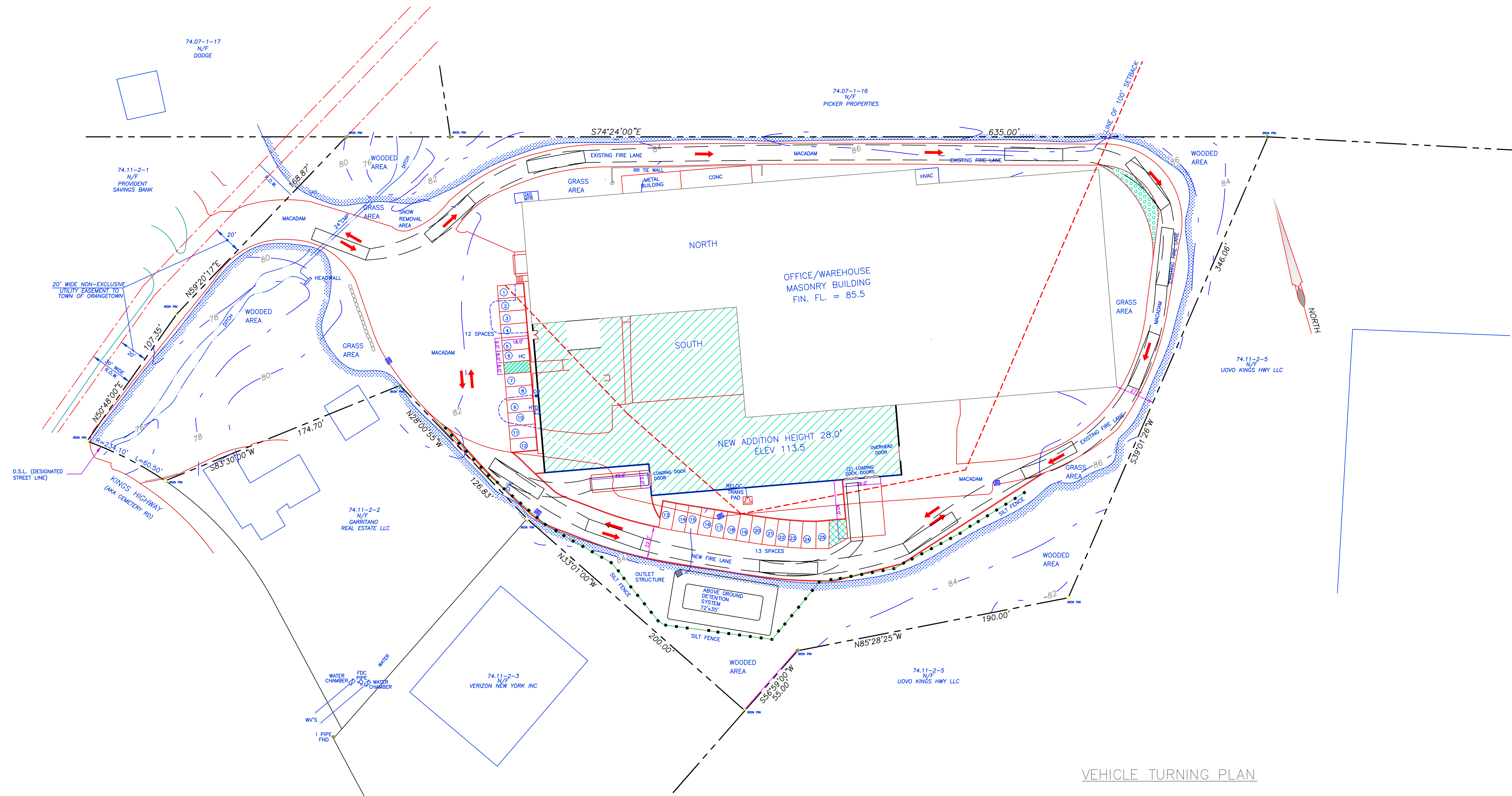


LEGEND

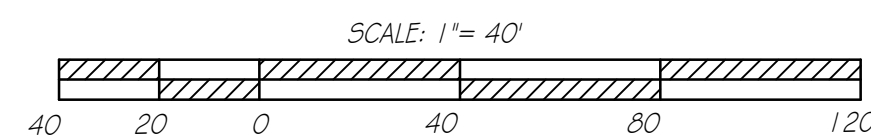
	PROPERTY LINE		IRON PIN		PARKING LOT STRIPING		OVERHEAD WIRES		UTILITY POLE		EXISTING CATCH BASIN
	SETBACK LINE		EXISTING CONTOUR LINES		NEW MACADAM		WATER LINE		HYDRANT		PROPOSED CATCH BASIN
	EXISTING BUILDING		PROPOSED CONTOUR LINES		TREE TO BE REMOVED		GAS LINE		DETENTION AREA		INLET PROTECTION DURING CONSTRUCTION
	PROPOSED BUILDING		SPOT ELEVATION		LOADING DOCK		SS SANITARY SEWER		SILT FENCE		HYD HYDRANT HOSE DISTANCE
	BUILDING DEMO		WOODED AREA		OVERHEAD ELEC.		RCP REINF. CONC. PIPE		EXISTING DRAINAGE PIPES		GRASSCRETE
	NEW CURB		ADDITION		CMP CORRUGATED MTL. PIPE		PROPOSED DRAINAGE PIPES				
	PARKING LINES										



PROPOSED TRUCK MANEUVERABILITY PLAN

SCALE: 1" = 40'

SITE PLAN DATA TAKEN FROM SURVEY JAY A. GREENWELL, P.L.S. LOCATED AT 34 WAYNE AVENUE, SUFFERN, NY 10901, NYS LIC NO 49676, DATED MAY 10, 2022.



VEHICLE TURNING PLAN

DESIGN CRITERIA:

BASED ON A VEHICLE OF 100" WIDE X 40' IN LENGTH
 OUTSIDE TURNING RADIUS OF 42'
 INSIDE TURNING RADIUS OF 24'

THIS WILL ACCOMMODATE VEHICLES WHICH ARE SIMILAR IN WIDTH AND LESS THAN 40' IN LENGTH.

DO NOT SCALE PRINTS

REVISIONS:

REVISIONS:

DATE: 4 FEBRUARY 2024
 SCALE: AS NOTED
 SHEET: SP-6

EAST COAST BIR 1993 LLC
 11 KINGS HIGHWAY
 TAPPAN, NEW YORK 10983

PROPOSED TRUCK
 MANEUVERABILITY PLAN

BART M. RODI - ENGINEER
 RESIDENTIAL & COMMERCIAL
 234 SOUTH GRANT AVE
 CONGERS, NEW YORK 10920
 (845) 268-6663

