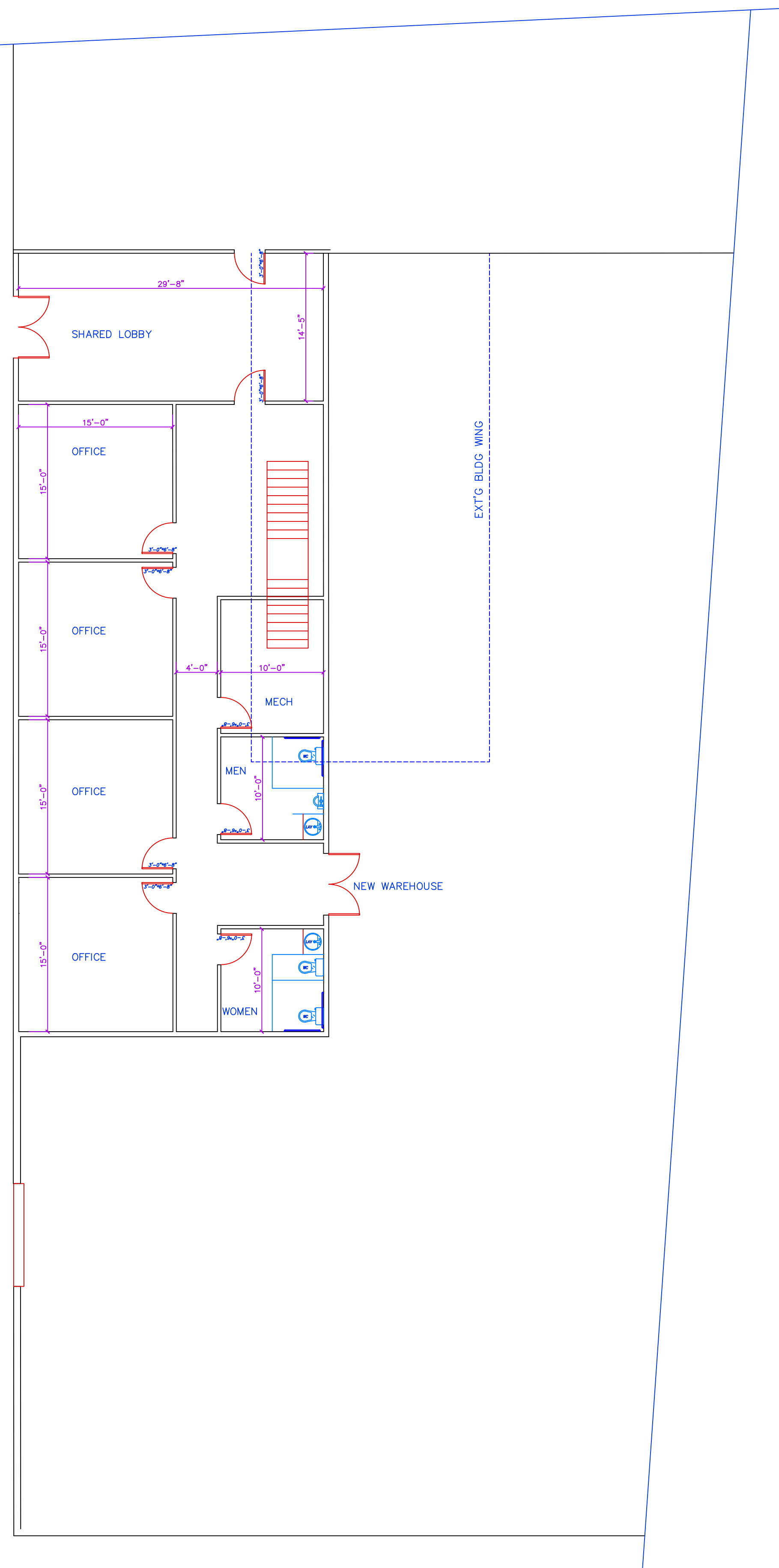
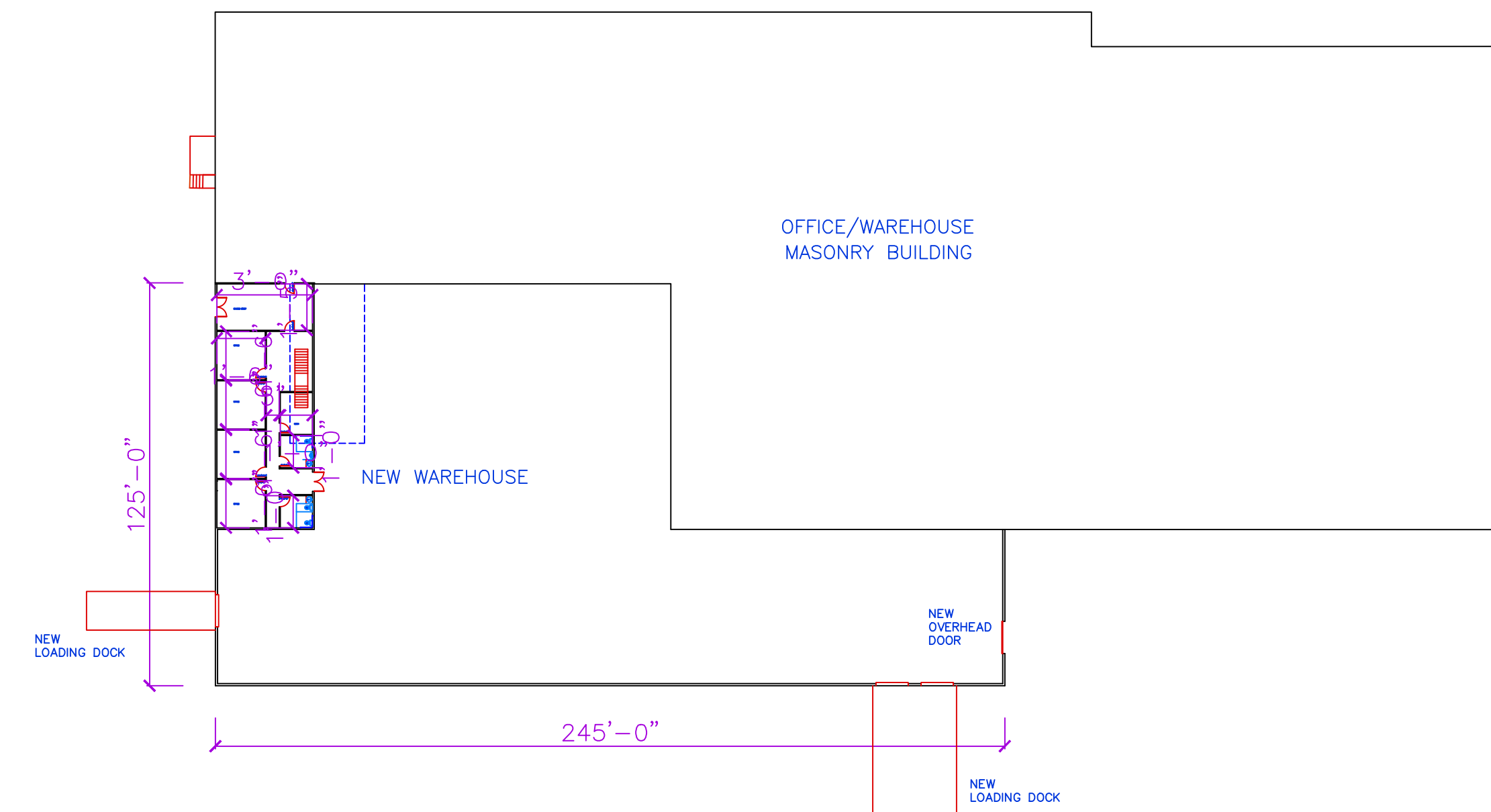


MEZZANINE PLAN
SCALE: 1/8" = 1'-0"

AREA OF PROPOSED ADDITION:
22,672.0 SQUARE FEET
(incl. 1,146 sf of ext'g bldg wing)



FIRST FLOOR PLAN
SCALE: 1/8" = 1'-0"



WAREHOUSE ADDITION PLAN
NOT TO SCALE

DATE:	

DATE:	16 AUGUST 2022
	18 AUGUST 2022
	23 AUGUST 2022
	15 SEPTEMBER 2022

SCALE:	AS NOTED
SHEET:	A-2

EAST COAST INTERNATIONAL
11 KINGS HIGHWAY
TAPPAN, NEW YORK 10983

PROPOSED WAREHOUSE ADDITION

BART M. RODI - ENGINEER
RESIDENTIAL & COMMERCIAL
234 SOUTH GRANT AVE
CONGERS, NEW YORK 10920
(845) 268-6663

NYS LIC #070545
PLANS VALID ONLY IF SEALED

DO NOT SCALE PRINTS