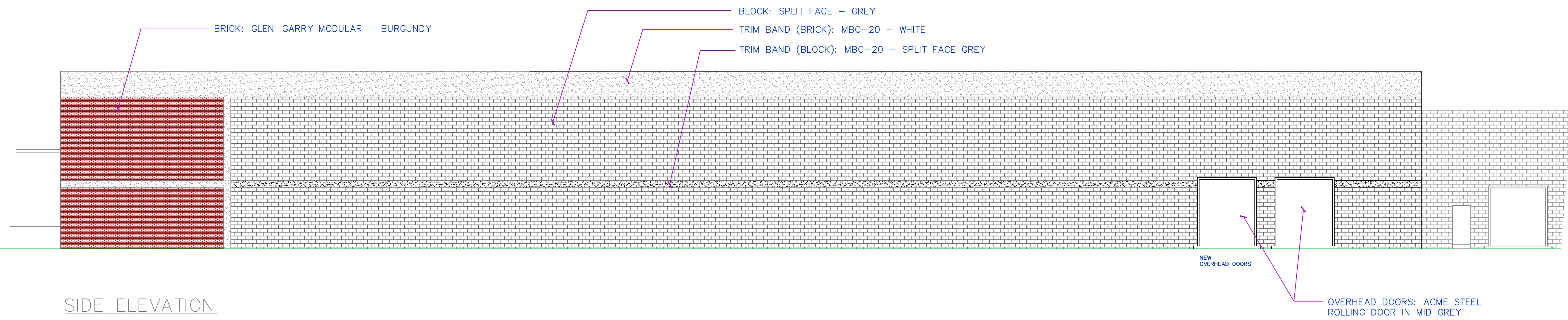


FRONT ELEVATION

SCALE: 3/32" = 1'-0"

- MATERIALS AND FINISHES:**
1. BRICK: GLEN-GARRY MODULAR - BURGUNDY
  2. BLOCK: SPLIT FACE - GREY
  3. TRIM BAND (BRICK): MBC-20 - WHITE
  4. TRIM BAND (BLOCK): MBC-20 - SPLIT FACE GREY
  5. WINDOWS: PELLA PICTURE WITH BLACK ANODIZED STEEL
  6. OVERHEAD DOORS: ACME STEEL ROLLING DOOR IN MID GREY



SIDE ELEVATION

SCALE: 3/32" = 1'-0"



REAR ELEVATION

REVISIONS:


REVISIONS:


DATE: 15 SEPTEMBER 2022

SCALE: AS NOTED

SHEET: A-1

EAST COAST BIR 1993 LLC

11 KINGS HIGHWAY  
TAPPAN, NEW YORK 10983

PROPOSED ELEVATIONS

**BART M. RODI - ENGINEER**  
RESIDENTIAL & COMMERCIAL  
234 SOUTH GRANT AVE  
CONGERS, NEW YORK 10920  
(845) 268-6663

NYS LIC #070545  
PLANS VALID ONLY IF SEALED

DO NOT SCALE PRINTS