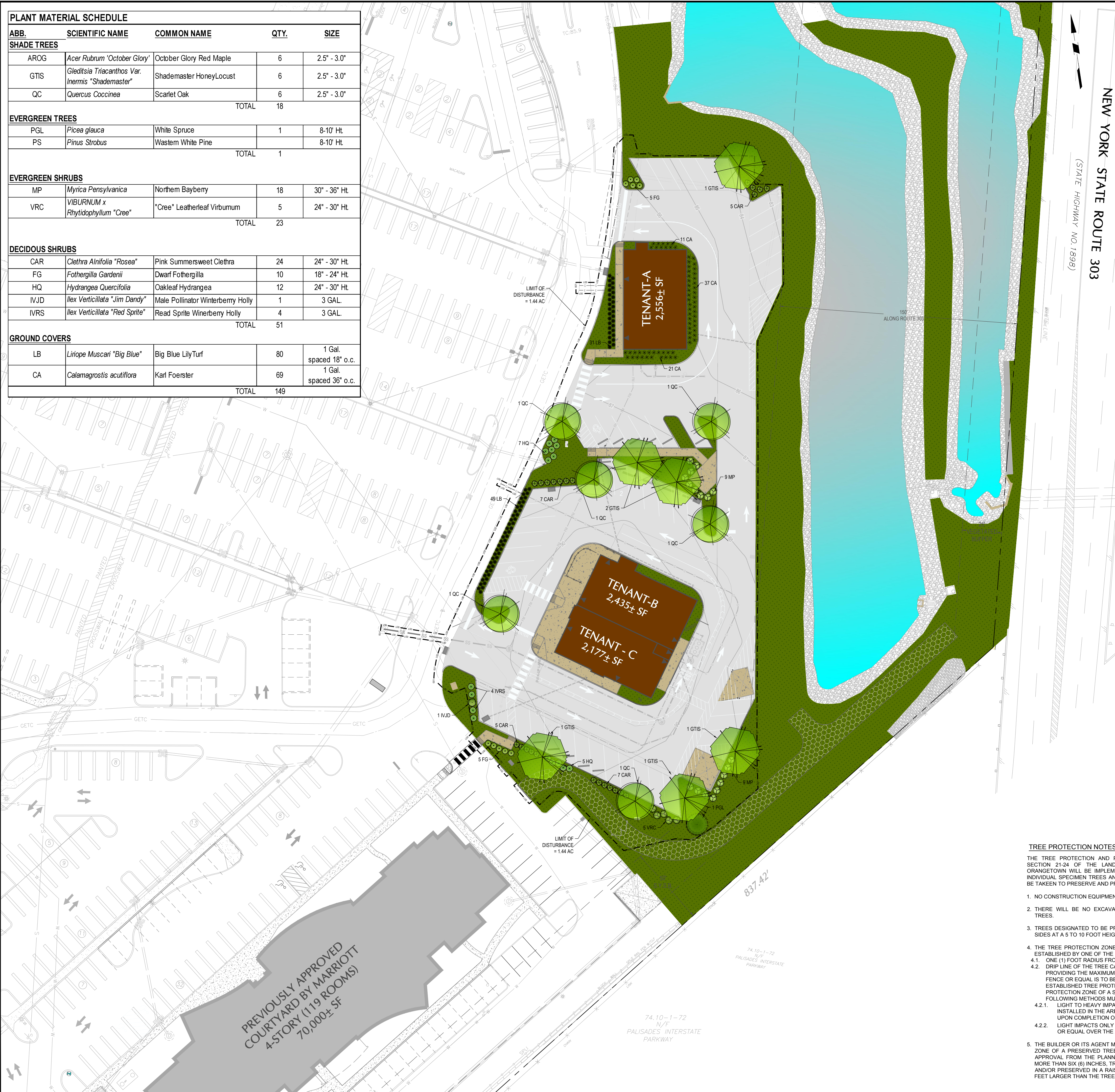
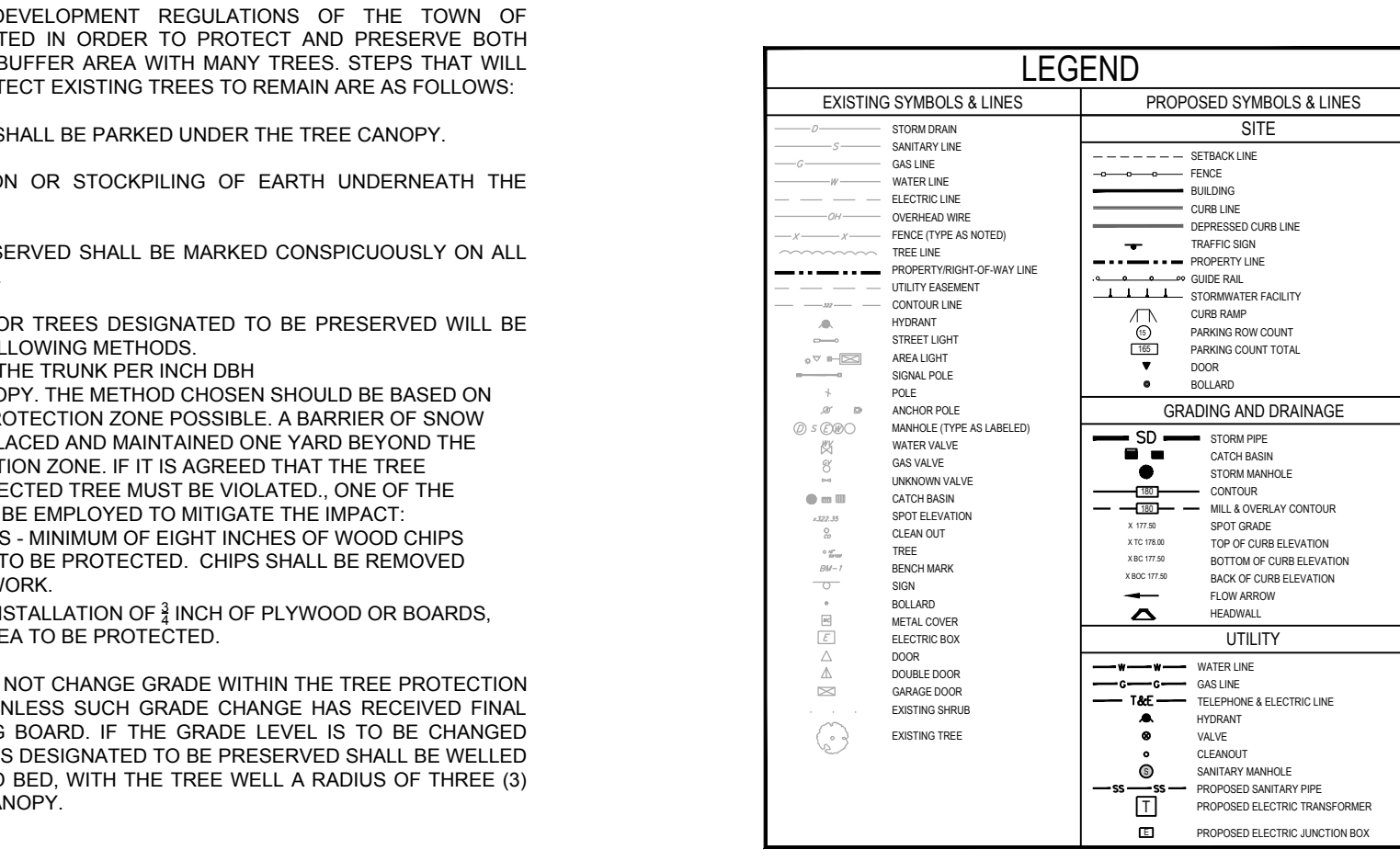
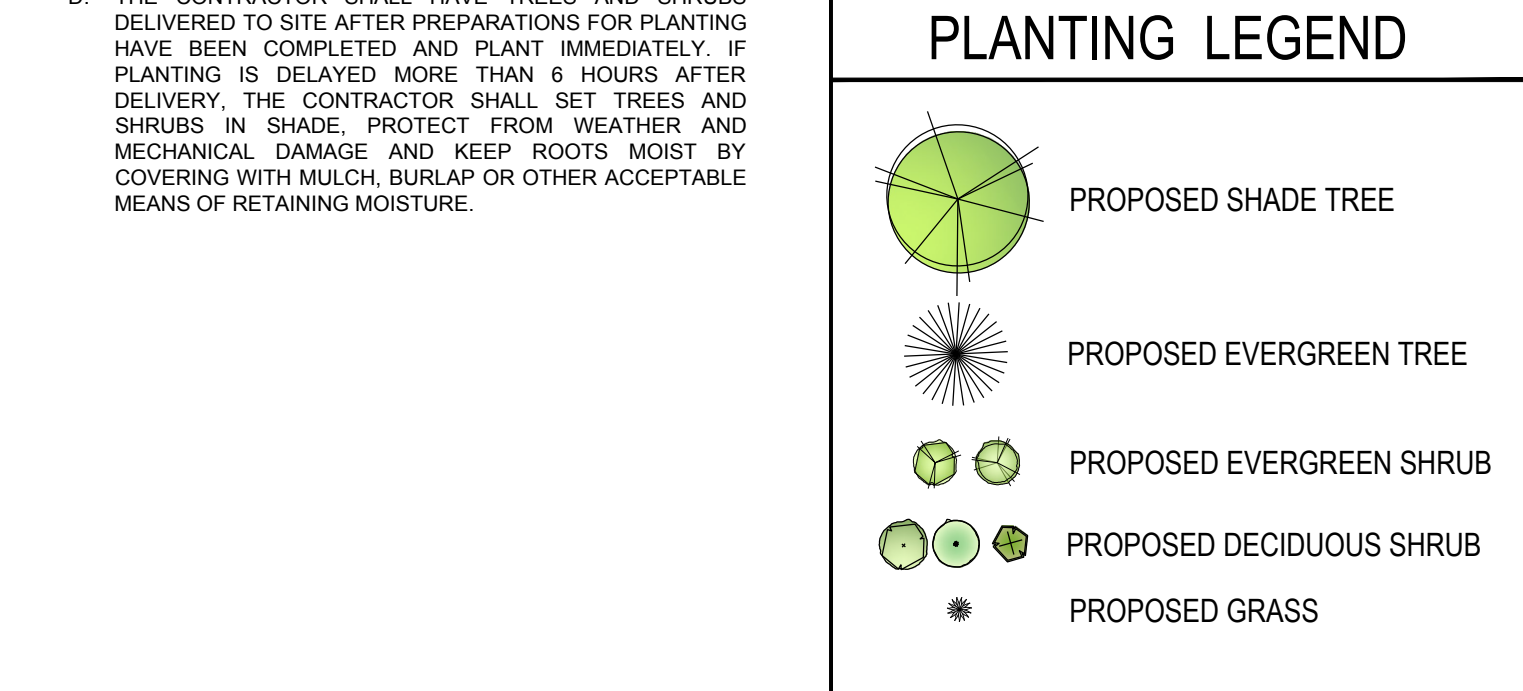


PLANT MATERIAL SCHEDULE				
ABB.	SCIENTIFIC NAME	COMMON NAME	QTY.	SIZE
SHADE TREES				
AROG	<i>Acer Rubrum</i> "October Glory"	October Glory Red Maple	6	2.5" - 3.0"
GTIS	<i>Gleditsia Triacanthos</i> Var. <i>Inermis</i> "Shademaster"	Shademaster HoneyLocust	6	2.5" - 3.0"
QC	<i>Quercus Coccinea</i>	Scarlet Oak	6	2.5" - 3.0"
TOTAL			18	
EVERGREEN TREES				
PGL	<i>Picea glauca</i>	White Spruce	1	8-10' Ht.
PS	<i>Pinus Strobus</i>	Wastem White Pine	1	8-10' Ht.
TOTAL			2	
EVERGREEN SHRUBS				
MP	<i>Myrica Pensylvanica</i>	Northern Bayberry	18	30" - 36" Ht.
VRC	<i>VIBURNUM</i> x <i>Rhytidophyllum</i> "Cree"	"Cree" Leatherleaf Viburnum	5	24" - 30" Ht.
TOTAL			23	
DECIDUOUS SHRUBS				
CAR	<i>Clethra Alnifolia</i> "Rosea"	Pink Summersweet Clethra	24	24" - 30" Ht.
FG	<i>Fothergilla Gardenii</i>	Dwarf Fothergilla	10	18" - 24" Ht.
HQ	<i>Hydrangea Quercifolia</i>	Oakleaf Hydrangea	12	24" - 30" Ht.
IJD	<i>Ilex Verticillata</i> "Jim Dandy"	Male Pollinator Winterberry Holly	1	3 GAL.
IVRS	<i>Ilex Verticillata</i> "Red Sprite"	Red Sprite Winterberry Holly	4	3 GAL.
TOTAL			51	
GROUND COVERS				
LB	<i>Liriope Muscari</i> "Big Blue"	Big Blue LilyTurf	80	1 Gal. spaced 18" o.c.
CA	<i>Calamagrostis acutiflora</i>	Karl Foerster	69	1 Gal. spaced 36" o.c.
TOTAL			149	



- ### GENERAL LANDSCAPE PLANTING NOTES
- NAMES OF PLANTS AS DESCRIBED ON THIS PLAN CONFORM TO THOSE GIVEN IN "STANDARDIZED PLANT NAMES" 1942 EDITION, PREPARED BY THE AMERICAN JOINT COMMITTEE ON HORTICULTURAL NOMENCLATURE. NAMES OF PLANT VARIETIES NOT INCLUDED THEREIN CONFORM TO NAMES GENERALLY ACCEPTED IN NURSERY TRADE.
 - ALL EXPOSED GROUND SURFACES THAT ARE NOT PAVED WITHIN THE CONTRACT LIMIT LINE, AND THAT ARE NOT COVERED BY LANDSCAPE PLANTING OR SEEDING AS SPECIFIED, SHALL BE COVERED BY A NATURAL MULCH THAT WILL PREVENT SOIL EROSION AND THE EMANATION OF DUST.
 - NO PLANT SHALL BE PUT INTO THE GROUND BEFORE ROUGH GRADING HAS BEEN COMPLETED AND APPROVED BY THE PROJECT LANDSCAPE ARCHITECT OR PROJECT ENGINEER.
 - STANDARDS FOR TYPE, SPREAD, HEIGHT, ROOT BALL AND QUALITY OF NEW PLANT MATERIAL SHALL BE IN ACCORDANCE WITH GUIDELINES AS SET FORTH IN THE "AMERICAN STANDARD FOR NURSERY STOCK, ANSI Z60.1", PUBLISHED BY THE AMERICAN ASSOCIATION OF NURSERYMEN. PLANT MATERIAL SHALL HAVE NORMAL HABIT OF GROWTH AND BE HEALTHY, VIGOROUS, AND FREE FROM DISEASES AND INSECT INFESTATION.
 - NEW PLANT MATERIAL SHALL BE NURSERY GROWN UNLESS SPECIFIED OTHERWISE. ALL PLANTS SHALL BE SET PLUMB, STAKE AS NECESSARY, AND SHALL BEAR THE SAME RELATIONSHIP TO FINISHED GRADE AS THE PLANTS ORIGINAL GRADE BEFORE DIGGING. PLANT MATERIAL OF THE SAME SPECIES AND SPECIFIED AS THE SAME SIZE SHOULD BE SIMILAR IN SHAPE, COLOR AND HABIT. THE LANDSCAPE ARCHITECT HAS THE RIGHT TO REJECT PLANT MATERIAL THAT DOES NOT CONFORM TO THE TYPICAL OR SPECIFIED HABIT OF THAT SPECIES.
 - THE CONTRACTOR SHALL VERIFY THE LOCATION OF ALL EXISTING UNDERGROUND UTILITY AND SEWER LINES PRIOR TO THE START OF EXCAVATION ACTIVITIES. NOTIFICATION OF THE PROJECT ENGINEER AND OWNER IMMEDIATELY OF ANY CONFLICTS WITH PROPOSED PLANTING LOCATIONS. THE CONTRACTOR SHALL BE RESPONSIBLE FOR ANY DAMAGE.
 - THE CONTRACTOR SHALL NOT MAKE SUBSTITUTIONS. IF THE SPECIFIED LANDSCAPE MATERIAL IS NOT OBTAINABLE, SUBSTITUTIONS MAY ONLY BE PERMITTED WHEN SUBMITTED THROUGH A WRITTEN REQUEST TO THE CITY AND OR THEIR REPRESENTATIVES AND APPROVED BY THE CITY AND OR THEIR REPRESENTATIVES.
 - LANDSCAPE CONTRACTOR TO STAKE OUT PLANTING LOCATIONS, FOR REVIEW AND APPROVAL BY THE LANDSCAPE ARCHITECT AND/OR OWNER BEFORE PLANTING WORK BEGINS. THE LANDSCAPE ARCHITECT AND/OR OWNER SHALL DIRECT THE CONTRACTOR IN THE FINAL PLACEMENT OF ALL PLANT MATERIAL, AND LOCATION OF PLANTING BEDS TO ENSURE COMPLIANCE WITH DESIGN INTENT UNLESS OTHERWISE INSTRUCTED. THE LANDSCAPE ARCHITECT MAY REVIEW PLANT MATERIALS AT THE SITE, BEFORE PLANTING, FOR COMPLIANCE WITH REQUIREMENTS FOR GENUS, SPECIES, VARIETY, SIZE, AND QUALITY.
 - THE LANDSCAPE ARCHITECT RETAINS THE RIGHT TO FURTHER REVIEW PLANT MATERIALS FOR SIZE AND CONDITION OF BALLS AND ROOT SYSTEM, INSECTS, INJURIES, AND LATENT DEFECTS, AND TO REJECT UNSATISFACTORY OR DEFECTIVE MATERIAL AT ANY TIME DURING PROGRESS OF WORK. THE CONTRACTOR SHALL REMOVE REJECTED PLANT MATERIALS IMMEDIATELY FROM PROJECT SITE AND REPLACE WITH PLANT MATERIAL SPECIFIED HEREIN AS DIRECTED BY THE LANDSCAPE ARCHITECT OR OWNER.
 - DELIVERY, STORAGE AND HANDLING
 - PACKAGED MATERIALS: PACKAGED MATERIALS SHALL BE DELIVERED IN CONTAINERS SHOWING WEIGHT, ANALYSIS, AND NAME OF MANUFACTURER. MATERIALS SHALL BE PROTECTED FROM DETERIORATION DURING DELIVERY, AND WHILE STORED AT SITE.
 - TREES AND SHRUBS: THE CONTRACTOR SHALL PROVIDE TREES AND SHRUBS DUG FOR THE GROWING SEASON FOR WHICH THEY WILL BE PLANTED. DO NOT PRUNE PRIOR TO DELIVERY UNLESS OTHERWISE DIRECTED BY THE LANDSCAPE ARCHITECT. DO NOT BEND OR BIND-TIE TREES OR SHRUBS IN SUCH A MANNER AS TO DAMAGE BARK, BREAK BRANCHES, OR DESTROY NATURAL SHAPE. PROVIDE PROTECTIVE COVERING DURING TRANSIT. DO NOT DROP BALLED AND BURLAPPED STOCK DURING DELIVERY OR HANDLING.
 - ALL PLANTS SHALL BE BALLED AND BURLAPPED OR CONTAINER GROWN AS SPECIFIED. NO CONTAINER GROWN STOCK WILL BE ACCEPTED IF IT IS ROOT BOUND. ALL ROOTBALL WRAPPING AND BINDING MATERIAL MADE OF SYNTHETICS OR PLASTICS SHALL BE REMOVED FROM THE TOP-1/3 OF THE BALL AT THE TIME OF PLANTING. IF THE PLANT IS SHIPPED WITH A WIRE BASKET AROUND THE ROOT BALL, THE WIRE BASKET SHALL BE CUT AND FOLDED DOWN 8 INCHES INTO THE PLANTING HOLE. WITH CONTAINER GROWN STOCK, THE CONTAINER SHALL BE REMOVED AND THE ROOT BALL SHALL BE CUT THROUGH THE SURFACE IN TWO LOCATIONS.
 - THE CONTRACTOR SHALL HAVE TREES AND SHRUBS DELIVERED TO SITE AFTER PREPARATION FOR PLANTING HAVE BEEN COMPLETED AND PLANT IMMEDIATELY. IF PLANTING IS DELAYED MORE THAN 6 HOURS AFTER DELIVERY, THE CONTRACTOR SHALL SET TREES AND SHRUBS IN SHADE, PROTECT FROM WEATHER, AND MECHANICAL DAMAGE AND KEEP ROOTS MOIST BY COVERING WITH MULCH, BURLAP OR OTHER ACCEPTABLE MEANS OF RETAINING MOISTURE.

- ALL LANDSCAPED AREAS TO BE CLEARED OF ROCKS, STUMPS, TRASH AND OTHER UNSIGHTLY DEBRIS. ALL FINE GRADED AREAS SHOULD BE HAND RAKED SURFACE ELIMINATING ANY CLUMPS AND AND UNEVEN SURFACES PRIOR TO PLANTING OR MULCHING.
- ALL PLANT MATERIAL SHALL BE INSTALLED AS PER DETAILS, NOTES AND CONTRACT SPECIFICATIONS. THE LANDSCAPE ARCHITECT MAY REVIEW INSTALLATION AND MAINTENANCE PROCEDURES.
- PLANT MATERIAL SHALL BE GUARANTEED TO BE ALIVE AND IN VIGOROUS GROWING CONDITION FOR A PERIOD OF TWO YEARS FOLLOWING ACCEPTANCE BY THE OWNER. PLANT MATERIAL FOUND TO BE UNHEALTHY, DYING OR DEAD DURING THIS PERIOD, SHALL BE REMOVED AND REPLACED IN KIND BY THE CONTRACTOR AT NO EXPENSE TO THE OWNER. IN ADDITION, ALL PLANT MATERIAL SHALL BE MAINTAINED FOR THE PERPETUITY OF THE SITE. ANY PLANT MATERIAL WHICH DIES SHALL BE REPLACED WITH PLANT MATERIAL OF THE SAME SIZE AND SPECIES.
- THE CONTRACTOR SHALL KEEP AREA CLEAN DURING DELIVERY AND INSTALLATION OF PLANT MATERIALS. REMOVE AND DISPOSE OF OFF-SITE ANY ACCUMULATED DEBRIS OR UNUSED MATERIALS. REPAIR DAMAGE TO ADJACENT AREAS CAUSED BY LANDSCAPE INSTALLATION OPERATIONS.
- ALL PLANTS SHALL BE WATERED THOROUGHLY TWICE DURING THE FIRST 24-HOUR PERIOD AFTER PLANTING. ALL PLANTS SHALL THEN BE WATERED WEEKLY OR AS REQUIRED BY SITE AND WEATHER CONDITIONS TO MAINTAIN VIGOROUS AND HEALTHY PLANT GROWTH. THE CONTRACTOR IS RESPONSIBLE FOR PROVIDING ADEQUATE WATER TO ALL PLANTS UNTIL THE JOB IS ACCEPTED AS COMPLETE.
- THE BACKFILL MIXTURE AND SOIL MIXES ARE TO BE INSTALLED PER THE SPECIFICATIONS.
- AFTER PLANT IS PLACED IN PLANTING HOLE, ALL TWINE HOLDING ROOT BALL TOGETHER SHOULD BE COMPLETELY REMOVED AND THE BURLAP SHOULD BE PULLED DOWN SO 1/2 OF THE ROOT BALL IS EXPOSED. SYNTHETIC BURLAP SHOULD BE COMPLETELY REMOVED AFTER INSTALLATION.
- MULCH SHOULD NOT BE PILED UP AROUND THE TRUNK OF ANY PLANT MATERIAL. NO MULCH OR TOPSOIL SHOULD BE TOUCHING THE BASE OF THE TRUNK ABOVE THE ROOT COLLAR.
- ALL FENCE INSTALLATION SHALL BE COMPLETED PRIOR TO COMMENCEMENT OF ANY LANDSCAPE PLANTING, SEEDING, SODDING, OR IRRIGATION WORK.
- CONTRACTOR TO COORDINATE FENCE INSTALLATION WITH OTHER TRADES INVOLVED WITH SITE WORK. CONTRACTOR IS RESPONSIBLE TO COORDINATE ALL FENCE POST INSTALLATION WITH EXISTING AND PROPOSED UTILITIES.
- WHEN DIGGING PLANT HOLES CHECK FOR ADEQUATE DRAINAGE WITH EMPIRICAL PERC TESTING I.E. FILL THE HOLE WITH WATER TO SEE HOW LONG IT TAKES TO DRAIN.
- CHECK MULCH AND PLANTS FOR ASIAN EXOTIC JUMPING WORMS.



- ### TREE PROTECTION NOTES:
- NO CONSTRUCTION EQUIPMENT SHALL BE PARKED UNDER THE TREE CANOPY.
 - THERE WILL BE NO EXCAVATION OR STOCKPIILING OF EARTH UNDERNEATH THE TREES.
 - TREES DESIGNATED TO BE PRESERVED SHALL BE MARKED CONSPICUOUSLY ON ALL SIDES AT A 5 TO 10 FOOT HEIGHT.
 - THE TREE PROTECTION ZONE FOR TREES DESIGNATED TO BE PRESERVED WILL BE ESTABLISHED BY ONE OF THE FOLLOWING METHODS.
 - ONE (1) FOOT RADIUS FROM THE TRUNK PER INCH DBH
 - THE METHOD CHOSEN SHOULD BE BASED ON PROVIDING THE MAXIMUM PROTECTION ZONE POSSIBLE. A BARRIER OF SNOW FENCE OR EQUAL IS TO BE PLACED AND MAINTAINED ONE YARD BEYOND THE ESTABLISHED TREE PROTECTION ZONE. IF IT IS AGREED THAT THE TREE PROTECTION ZONE OF A SELECTED TREE MUST BE VIOLATED, ONE OF THE FOLLOWING METHODS MUST BE EMPLOYED TO MITIGATE THE IMPACT.
 - LIGHT TO HEAVY IMPACTS - MINIMUM OF EIGHT INCHES OF WOOD CHIPS INSTALLED IN THE AREA TO BE PROTECTED. CHIPS SHALL BE REMOVED UPON COMPLETION OF WORK.
 - LIGHT IMPACTS ONLY - INSTALLATION OF 3 INCH OF PLYWOOD OR BOARDS, OR EQUAL OVER THE AREA TO BE PROTECTED.
 - THE BUILDER OR ITS AGENT MAY NOT CHANGE GRADE WITHIN THE TREE PROTECTION ZONE OF A PRESERVED TREE UNLESS SUCH GRADE CHANGE HAS RECEIVED FINAL APPROVAL FROM THE PLANNING BOARD. IF THE GRADE LEVEL IS TO BE CHANGED MORE THAN SIX (6) INCHES, TREES DESIGNATED TO BE PRESERVED SHALL BE WELLED AND/OR PRESERVED IN A RAISED BED, WITH THE TREE WELL A RADIUS OF THREE (3) FEET LARGER THAN THE TREE CANOPY.

BHATT THAKKAR ENGINEERING, DPC
 1456 Ferry Road,
 Suite 603
 Doylestown, PA 18901
 T: 215.766.8280
 F: 215.434.5280

Project
ORANGEBURG COMMONS
 TOWN OF ORANGETOWN
 ROCKLAND COUNTY NEW YORK
 Drawing Title

Tree Plan

 ANAND AJAY BHATT, PROFESSIONAL ENGINEER
 NEW YORK LIC. NO. 085701

30 0 10 30
 SCALE IN FEET

DATE	COMMENTS	NO.
REVISIONS		
Project No.	230002801	
Date	10/02/2023	
Scale	1" = 30'	
Drawn By	JEM	
Checked By	AB	
Drawing No.	LP-100	
Sheet 14 of 16		