

# One Ramland Road

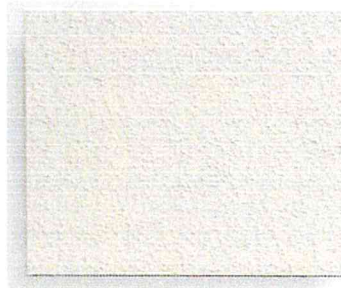
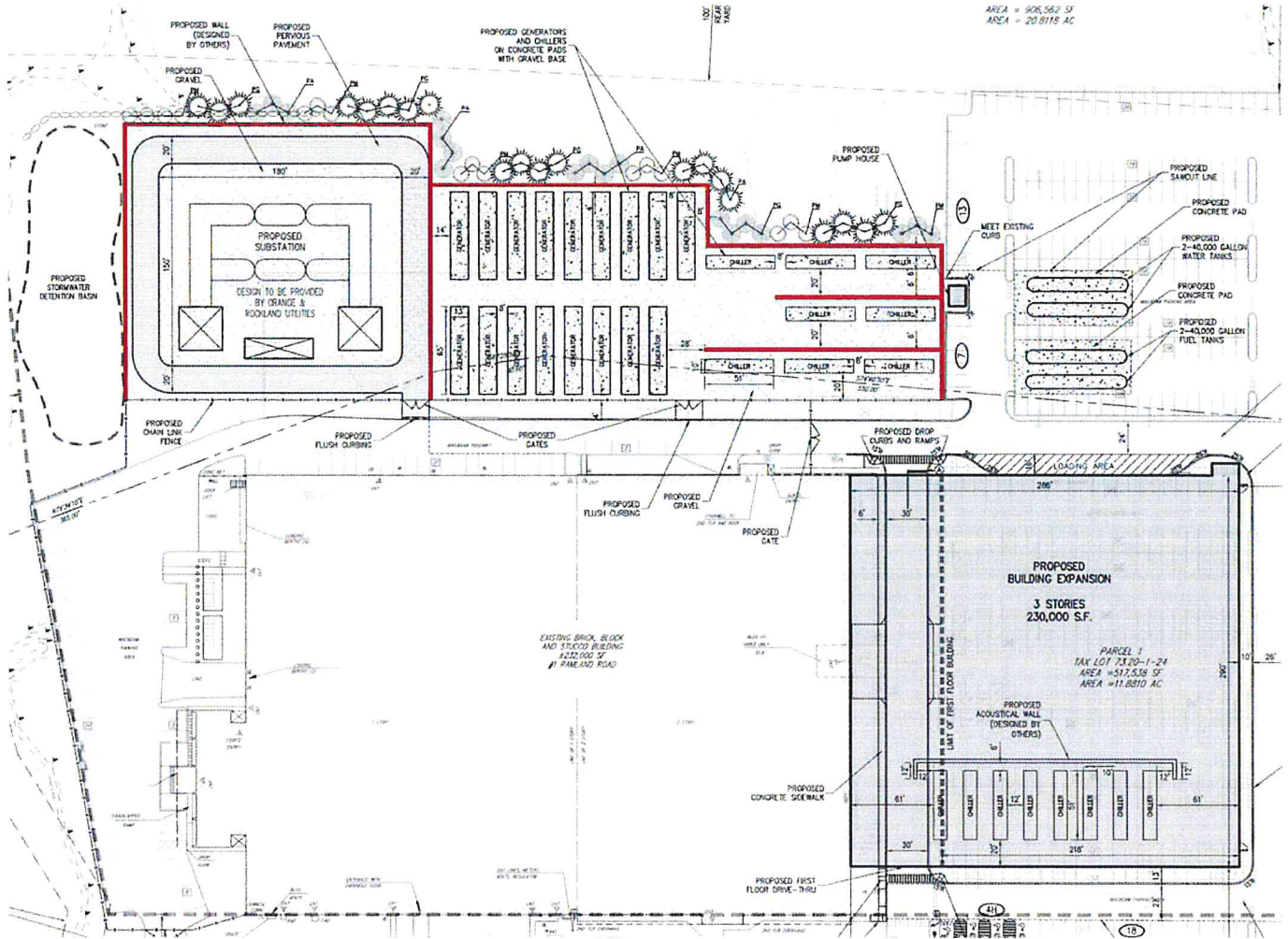


One Ramland Road  
ACABOR Review  
July 11, 2013

1. Equipment Enclosures
2. Facade
3. Coping
4. Curtain Wall
5. Doors
6. Windows
7. Loading Docks
8. Lighting



## Substation Perimeter Wall to match Building Facade: Tilt-Up Construction with Stucco Finish

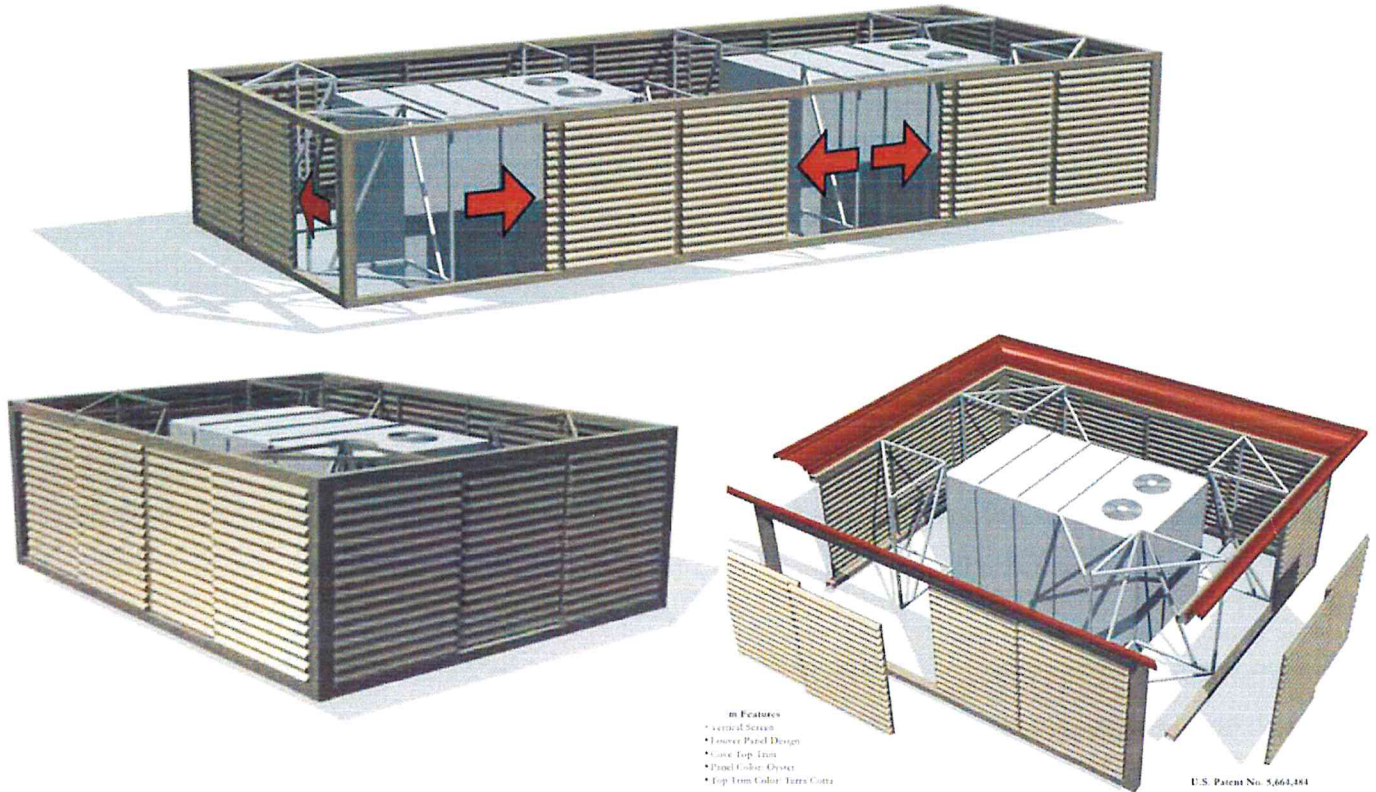


MANUFACTURED BY: **FABCON**



fifteenfortyseven  
CRITICAL SYSTEMS REALTY

Rooftop AC Enclosure:  
Cityscapes Architectural Innovations - Envisor Vertical Roof Screen



Benjamin Moore AF-85  
frappe



# One Ramland Road

## Facade





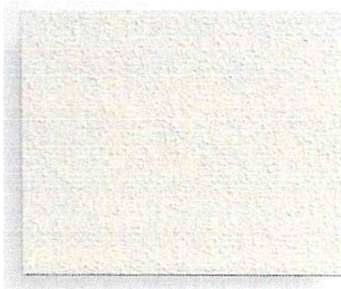
Tilt-Up Construction

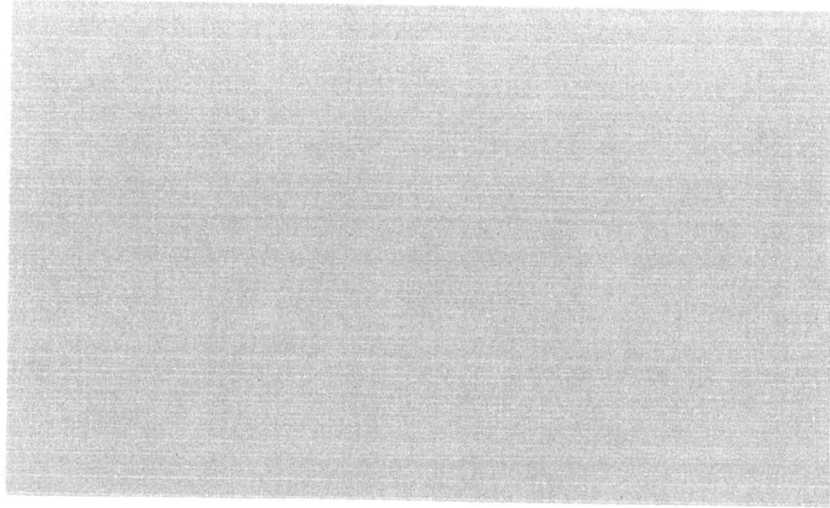


MANUFACTURED BY:  
FABCON



Stucco Finish  
to match existing

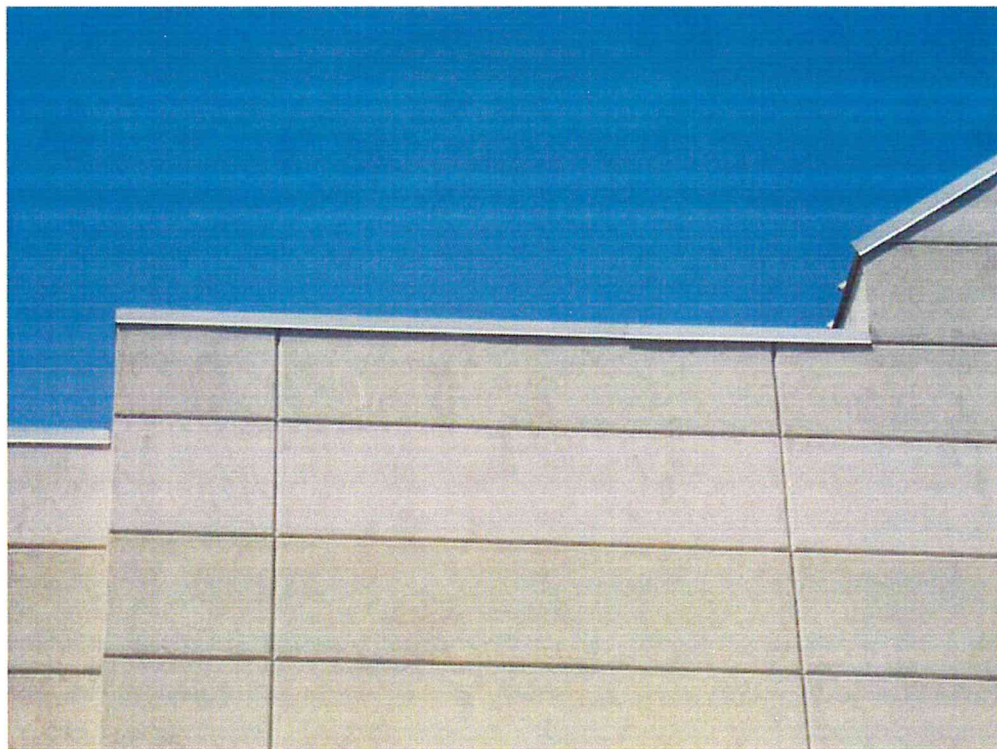




Benjamin Moore AF-470  
Flora

Benjamin Moore AF-85  
Frappe





**PAC-TITE COPING**

**TAPERED VERSION**

**PRODUCT FEATURES**

- Superior, efficient design for ease of installation
- Extensively tested for reliable long-term performance
- Snap-on design eliminates field-crimping
- Concealed splice plates provide watertight installation
- Pre-fabricated miters and accessories for proper system fit
- Custom fabrication available for job-specific details
- Stainless steel springs factory attached to 12" wide, pre-punched anchor clips
- Wide variety of colors, finishes and gauges
- Convenient 12" lengths
- Recyclable material
- Custom and radius capabilities available
- All fasteners, splice plates and anchor clips are included

**MATERIALS**

- 37 Stocked PAC-CLAD Finishes – 24 GA Steel
- 18 Stocked PAC-CLAD Finishes – .040 Aluminum
- 29 Stocked PAC-CLAD Finishes – .050 Aluminum
- 6 Stocked PAC-CLAD Finishes – .063 Aluminum
- Mill Finish Aluminum – .040, .050 & .063 Aluminum
- Clear and Colored Anodized – .040, .050 & .063 Aluminum

**ACCESSORIES**

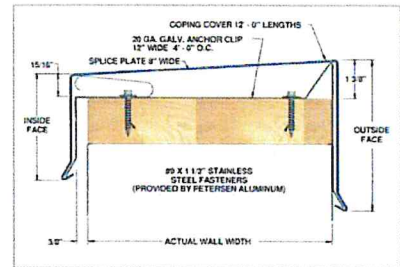
- Miters – 90 Degrees and Non-90 Degrees, Welded or Quicklocked
- Transitions
- Endcaps
- Endwall Flashing

**TESTING**

- ANSI/SPRI ES-1 Standard tested
- Factory Mutual 1-90 approved for wind up-lift protection
- Miami-Dade Approved to comply with the High Velocity Hurricane Zone of the Florida Building Code.

**WARRANTY**

A 20-Year, 110 mph Wind Warranty is available on orders to meet a project's specification. It provides a maximum of 20 years, 110 mph coverage for the repair or replacement of any portion of the roof edge system that has failed due to a defect in the supplied materials.



www.pac-clad.com | 800-PAC-CLAD  
 ©2011 Petersen Aluminum Corporation







Curtain Wall System to match existing



**PBS 380™**  
**CURTAIN WALL**



**PBS 380 CURTAIN WALL**

**Air:**

ASTM E 283: air infiltration shall not exceed .06 CFM when tested at 6.24 PSF.

**Water:**

ASTM E 331: no uncontrolled water when tested at 10 PSF.

**Structural:**

ASTM E 330: maximum deflection of L/175 with a safety factor of 1.65.

**Thermal:**

ASTM C 236: CRF shall not be less than 67: U-value shall not exceed .68.

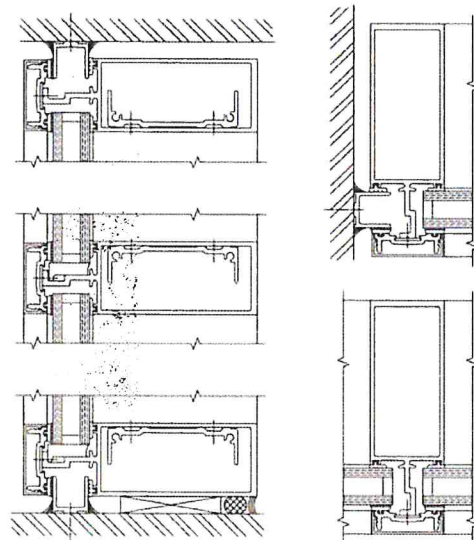
Complete System details are available on the Arch Product CD or

[www.archaluminum.net](http://www.archaluminum.net)

01/09

**PBS 380**

The Arch PBS 380 is a 2" sightline Curtain Wall system for low-rise applications. PBS 380 has back members from 2 1/2" to 6 3/4" designed to meet various load requirements. Glass infills range from 1/4" to 1". Pressure plate and cover assembly allow for multiple finish options. The pressure plate is pre-loaded with a thermal separator. Sub-frames are compatible with the full range of Arch Aluminum's entrances. Water deflectors channel water down the verticals and weep to the exterior. PBS 380 is assembled with shear blocks or labor saving screw spline. Available in standard anodized, liquid paint, or Environmentally Smart Archkote™ Powder Coat finish.









**ENTRANCE DOORS**

Product Description	Standard Elevation	Showroom Door Elevation	Bi-fold Door Elevation	Technical Data
<p>Trulite Glass &amp; Aluminum Solution's 200, 300 &amp; 500 Entrances are engineered to provide simple fabrication, easy assembly and problem free installation in an easy to use, economical entrance system. The 1-3/4" 200 narrow stile (light commercial traffic), 300 medium stile (heavy commercial traffic) and 500 wide stile doors (abusive commercial traffic) are assembled with tie rod construction and are dry glazed with 1/4", 5/8" or 1" glazing infill. These doors are available with framing from the CG400, CG450/CG451, CT451 and WW450 systems among others, allowing the doors to be easily integrated in any application. This creates the unique ability for Trulite to produce and furnish a complete storefront system and glazing, which is an added convenience for the building team. All Trulite entrance doors can be modified to accommodate ADA codes and can accommodate many hardware requirements lending themselves to the varying needs of our customers.</p>				
<p><b>200,300 &amp; 500 SERIES</b></p>				





[Return to Index](#)

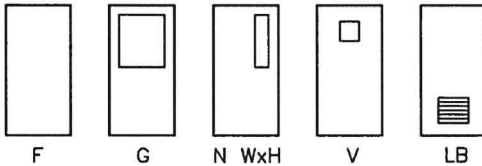
**TECH-DATA**

**ASSA ABLOY**

**LABELED FIRE DOORS**

**1-3/4" REGENT AND OMEGA FIRE DOORS  
HONEYCOMB CORE**

Fire Door Designs



Regent doors are handed. Omega doors are non-handed. Honeycomb Core-Steel Glazing Trim, UL, WH or FM label ...classified for openings rated at up to 3 hours (Class A, B, C, D, E and 20 minute) which have no maximum temperature rise restrictions. For additional data on Regent and Omega doors, see pages D1 and D2.

LABEL		MAX. EXPOSED GLASS AREA	UL LISTED F/L LOUVER
RATING	CLASS		
3 HOURS	A	*100 sq. in.	None
1-1/2 HOURS	B	**100 sq. in.	****576 sq. in.
3/4 HOURS	C	***1296 sq. in.	****576 sq. in.
1-1/2 HOURS	D	None	None
3/4 HOURS	E	***1296 sq. in.	None
1/3 HOURS	*****	***1296 sq. in.	None

Maximum size:  
 (18 or 16 ga.) 4'-0" x 9'-0" single (up to 3 hr.)  
 (18 or 16 ga.) 8'-0" x 8'-0" pair (up to 3 hr.)  
 (18 or 16 ga.) 8'-0" x 9'-0" pair (up to 1-1/2 hr.)  
 (20 ga.) 3'-4" x 7'-2" single-UL (up to 1-1/2 hr.)  
 (20 ga.) 4'-0" x 8'-0" single-WH (up to 1-1/2 hr.)  
 (20 ga.) 8'-0" x 8'-0" single-WH (up to 1-1/2 hr.)

\*Only when accepted by authority having jurisdiction. FIRE LITE® glazing material required. Per leaf ...Maximum dimension = 33".  
 \*\*Per leaf ...Maximum dimension = 33".  
 \*\*\*Per lite ...Maximum dimension = 54".  
 \*\*\*\*Do not use fusible link louvers in fire doors prepared for a glass lite, a vision panel, or fire exit hardware.  
 \*\*\*\*\*1/3 hour doors are for use where smoke control is a primary consideration.

Astragal is required for 3 hour rated and 20 ga. pairs and is optional for other pairs.

- Latchset: UL listed, 1/2" minimum throw.

Classified for use with all types of labeled fire exit hardware.

- Optional preparation available for listed open back strike or selected electric strike (1-1/2 hr. rated)





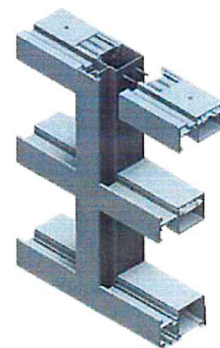
**Trulite**

**WINDOW WALL**

Product Description    WW450 Elevation    WT450 Elevation    Technical Data

Trulite Glass & Aluminum Solution's WW450 - WT450 Thermal Window Wall is engineered to provide simple fabrication, easy assembly and problem free installation in an easy to use, economical framing system. The 2-1/4" x 4-1/2" screw spline assembly system has strong performance characteristics for strip and ribbon window wall applications. The WW450 can accommodate 1" glazing infill and is available in either thermal or non-thermal options. This economical inside glazed system offsets the glass to the exterior for a smooth exterior appearance. Trulite's 200, 300 & 500 entrances can be easily integrated into this system.

**WW450 - WT450**



fifteenfortyseven  
CRITICAL SYSTEMS REALTY









Parking Lot Lighting:  
Existing Light Poles to be Reconfigured around Proposed Expansion





**SCONCE, 30WLED,  
BRONZE**

**Product Specifications**

Collection:	Fundamentals
Item No.:	23262-010
Height:	9.31"
Chain / Cord Length:	7.12"
Width:	14.43"
Est. Shipping Weight:	12.06 lbs
No. of Bulbs:	30 Inc
Bulb Wattage:	1 watts
Bulb Type:	LED CREE <sup>AAA</sup>
Bulb Base:	LED
Bulb Voltage:	120 volts

**Options Available**

ITEM CODE	FINISH	SHADE
23262-010	architectural bronze	clear

**Colour / Shades Available**

FINISH	SHADE
architectural bronze	clear

