

380"

78"



53391



LISTED
Mfg. #151394

WHITE BLUE 288c RED 3630-33 RED 3630-33 *Elevation View*
3/8" = 1'-0"



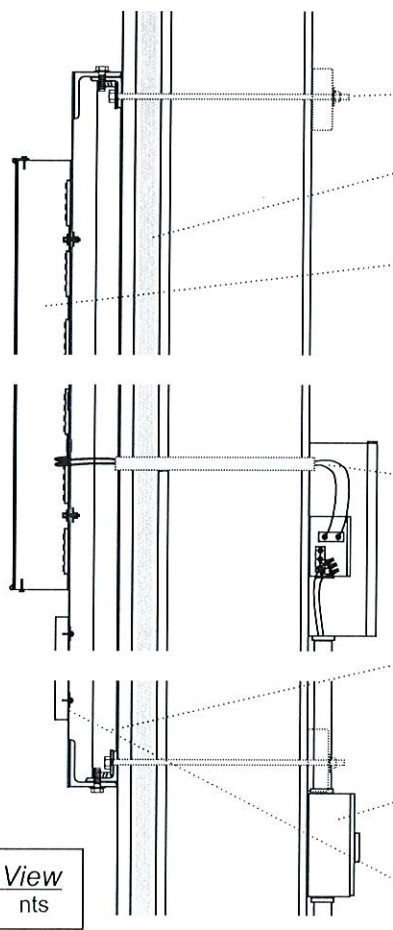
SITE VIEW
NTS



FASTENER SCHEDULE (Box Sign)			WALL CONSTRUCTION			
HARDWARE	DIAM.	O.C. Spacing Max.	MASONRY (CMU-Block)	EFIS/DRYVIT OVER min. 1/2" PLYWOOD	EFIS/DRYVIT OVER GYPSUM/DENSGLOSS	METAL PANEL OVER METAL STUD
THRU-BOLT	3/8"	33in.	YES	YES	ONLY WITH BACKER (MIN. 3/4" PLYWOOD)	YES
POWERS DBL. EXPANSION ANCHOR	3/8"	41in.	YES ²	NO	NO	NO
LAG BOLT	3/8"	30in.	NO	1" SOLID WOOD PENETRATION REQD	NO	NO
SNAP TOGGLE BOLT TYPE BC	3/8"	27in.	IF THROUGH BLOCK FACE	YES	ONLY WITH MIN. 3/4" PLYWOOD BACKER	YES with plywood backer
Tek-Screw	1/4"	31in.	NO	NO	NO	YES into 1/8" Alum or 1/16" Steel

1.) Fasteners shall Be evenly spaced Top and Bottom w/4 inch max. side end clearance, Thru- Box Frame with washer.
 2.) Expansion anchors require a minimum 5" solid masonry embedment installed per tcc-guide for wall construction type.
 3.) Tek-Screw into Alum. Require SS Screw - Full Thread Embedment Required.
 4.) Thru-Bolts (All-Threaded Rods) into L2x2x3/16" Stl. Angle or P1000 Uni-Strut or 2x6 lumber spanning two(2) wall studs per Bolt - Rod

Engineers Connection Note:
Provide Fasteners through box framing with washer using the fastener schedule for existing wall construction type to determine the fastener type and maximum O.C. bolt spacing to install along the top and bottom with a 4" Maximum side end clearance with one centered down each vertical side.



Partial Section View
nts

- 3/8" diameter non-corrosive steel through-bolt or wall anchor, (8) at top of sign, (8) at bottom, evenly spaced, provide 2 x 4 back-up blocks behind wall
- Metal-clad wall, aluminum composite over densglass and structural steel studs (spanning two wall studs per/bolt min.)
- Face-lit channel logo and letters, 3" depth, .040" (min) aluminum returns and backs, mechanically fasten to background face with 1/4-20 non-corrosive steel bolts and #10 screws and flat washers, min (8) places per character, aluminum core trim-cap face retainers chemically welded to acrylic faces, attached to returns with #8 non-corrosive steel self-tapping screws at 18" max spacing, 3/16" acrylic face with trans 3M vinyl color overlays as required, high-efficiency white LED illumination
- shielded class 2 low voltage secondary wiring to remote 120 volt solid-state power supplies in enclosure mounted behind wall in accessible location to be determined, one sign section only
- fabricated aluminum background panel, flush .090" (min) aluminum faces, 2" x 2" x 3/16" 6061-T6 structural aluminum framing and welded bracing at ~48" spacing, 2" x 2" x 3/16" 6061-T6 structural angle mounting frame, panel bolts to frame at 36" max spacing with 3/8-16 SS cap screws, Grip-gard 2-part acrylic polyurethane finish
- 120 volt primary required, to sign location by others
- UL listed and labeled, provide disconnect switch lower right side
- Max draw of sign is 4 amps at 120 volts
- 1/2" flat-cut-out tagline letters, stud-mount to face

MURDOCH ENGINEERING
SIGN STRUCTURE PROFESSIONALS
2399 A-2 NJ-34
MANASQUAN, NJ 08136
(973) 570-8215 x0
6/2/2023
Jere Murdoch, PE
Professional Engineer
NY PE Lic. #089862
Exp. 1/31/2026
PN#2242890

DESIGN SPECIFICATIONS	
NYS Building Code 2020	
ASCE 7-16	Minimum Design Loads for Buildings & Other Structures
ACI 318-14	Building Code Requirements for Structural Concrete
ANSI/AISC 360-16	Specification for Structural Steel Buildings

DESIGN LOADS	
Wind	V = 114 mph
Exposure	C
Risk Cat.	II
Grnd. Snow	Pg = 30 psf

ILLUMINATED CHANNEL LETTER ID SIGN
(1) SIGN AS SHOWN REQUIRED

Valley Wide Signs & Graphics
Allentown, PA 610-841-4844

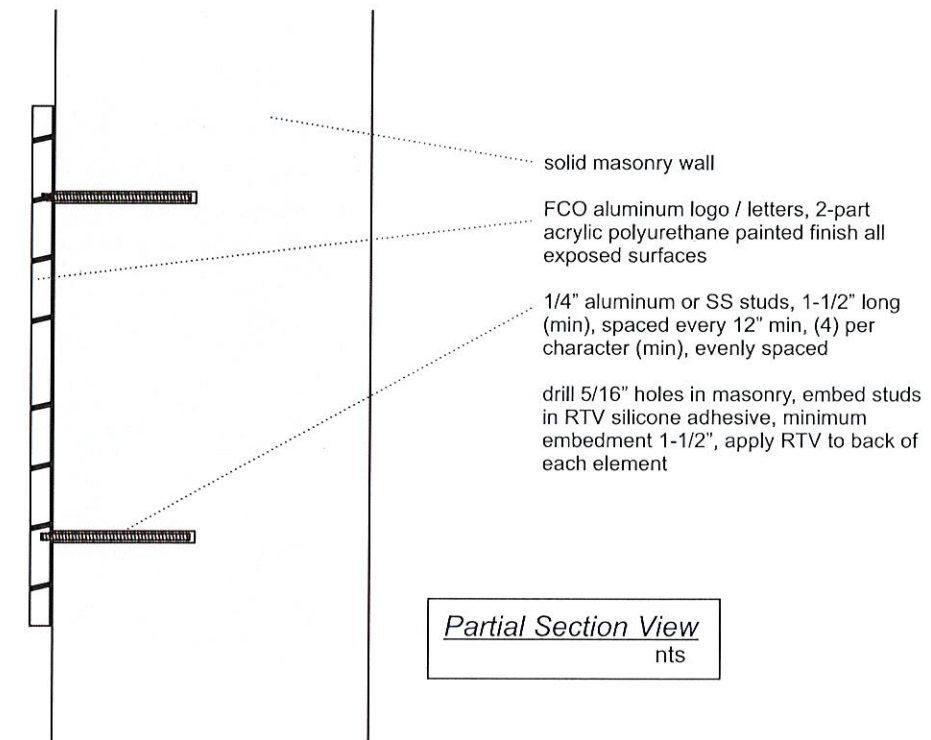
Momentive	
401 N. Middletown Rd., Pearl River, NY 10965	
Date	5-3-23
Drawn By	HRMc
Scale	as shown
Drawing No.	53391

- NOTES**
- (1) dedicated 120 volt 20 amp circuit recommended, max draw of sign is 4 amps
 - Sign shall be UL listed and labeled

SHEET
1 of 2
REVISION #
0



BLUE 288c RED 3630-33 RED 3630-33 *Elevation View*
1/2" = 1'-0"



* Provide Two(2) 1/4"Ø All-Threaded studs per/Letter, One(1) Top and Bottom at angle top to bottom drilled, tapped and glued into backs. Install studs through into a 1-1/4" Min. masonry embedment with RTV Silicone adhesive or equivalent with a 218psi Tensile Strength min. Generously coat rods and pre-fill drill holes with adhesive just prior to installation.

MURDOCH ENGINEERING
SIGN & STRUCTURE PROFESSIONALS
2399 A-2 NJ-34
MANASQUAN, NJ 08735
(973) 570-8215 x0
6/2/2023
Jere Murdoch, PE
Professional Engineer
NY PE Lic. #089862
Exp. 1/31/2026
PN#2242890

DESIGN SPECIFICATIONS	
NYS Building Code 2020	
ASCE 7-16	Minimum Design Loads for Buildings & Other Structures
ACI 318-14	Building Code Requirements for Structural Concrete
ANSI/AISC 360-16	Specification for Structural Steel Buildings
DESIGN LOADS	
Wind	V = 114 mph
Exposure	C
Risk Cat.	II
Grnd. Snow	Pg = 30 psf

NON-ILLUMINATED ID LETTER/LOGO
(2) SETS AS SHOWN REQUIRED

Valley Wide Signs & Graphics
Allentown, PA 610-841-4844

Momentive
401 N. Middletown Rd., Pearl River, NY 10965

Date	5-3-23	Scale	as shown
Drawn By	HRMc	Drawing No.	53391

NOTES

- (1) dedicated 120 volt 20 amp circuit recommended, max draw of sign is 4 amps
- Sign shall be UL listed and labeled

SHEET	2 of 2
REVISION #	0