



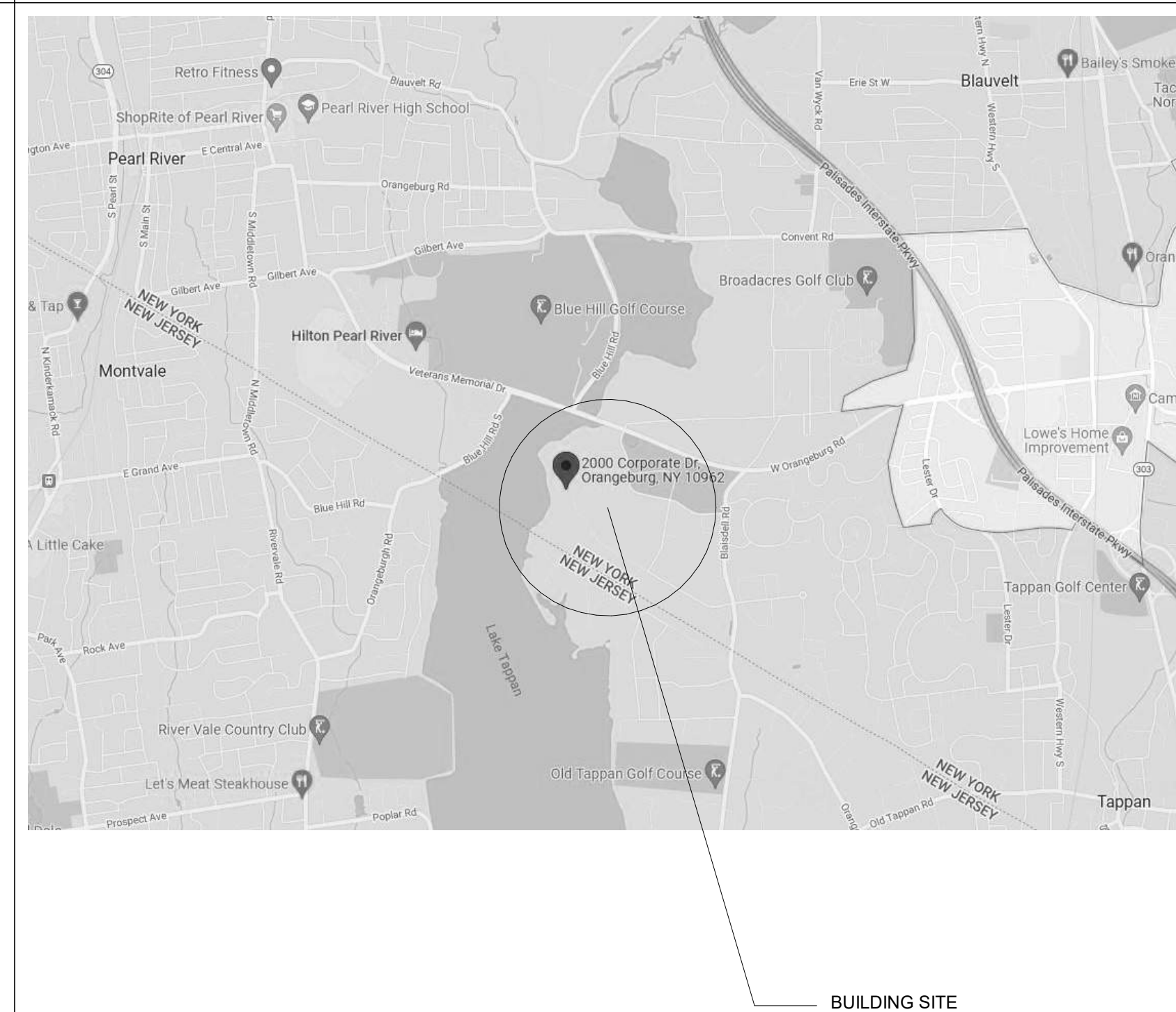
BUILDING #1

2000 Corporate Dr.
Orangeburg, NY 10962

JOB # 2021-333P



LOCATION MAP



Client:



DATABANK

Architect / MEP Engineers:

HIGHLAND
ASSOCIATES
Architecture | Engineering | Interior Design

One East 33rd Street
New York, NY 10016
(212) 681-0200 (office)
www.hilandassociates.com

New York • Pennsylvania • Florida

Structural Engineer:

DESIMONE

60 MAN MAR DRIVE, UNIT #2
PLAINVILLE, MA 02762
T. 508.384.0163
www.de-simone.com

Precast Engineer:

Security Consultant:

Site/Civil Consultant:

Kimley»»Horn

1 N Lexington Ave, Suite 1575
White Plains, NY 10601
ph: 914-368-9200
www.kimley-horn.com

Key Plan:

[illegible]

Project:

DATABANK
LGA-3

2000 Corporate Dr,
Orangeburg, NY 10962
BUILDING # 01

Seal & Signature:



GLENN D. LEITCH
Y RA No. 026488-1

COVER SHEET

Project Number: 2021-333D

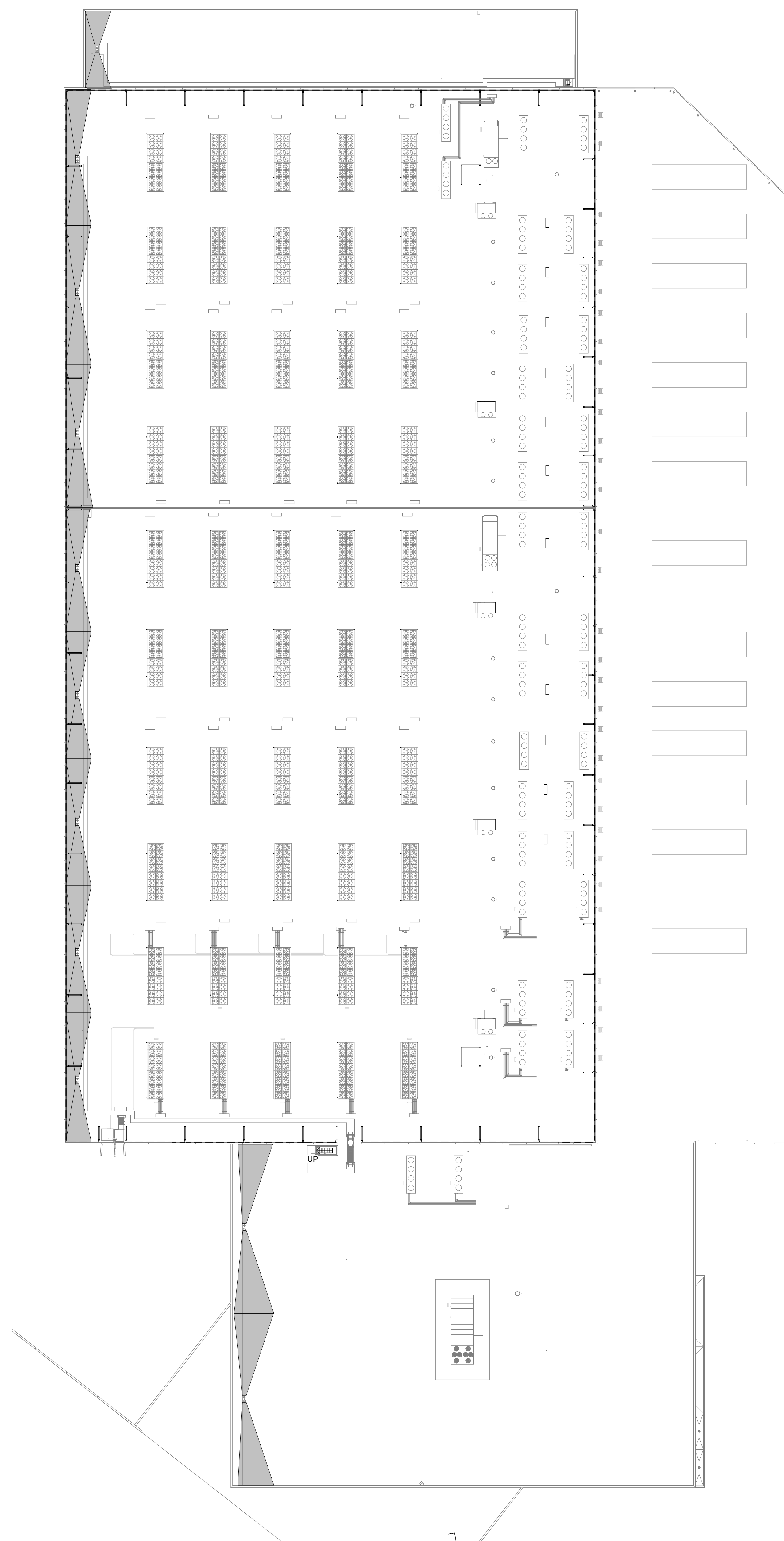
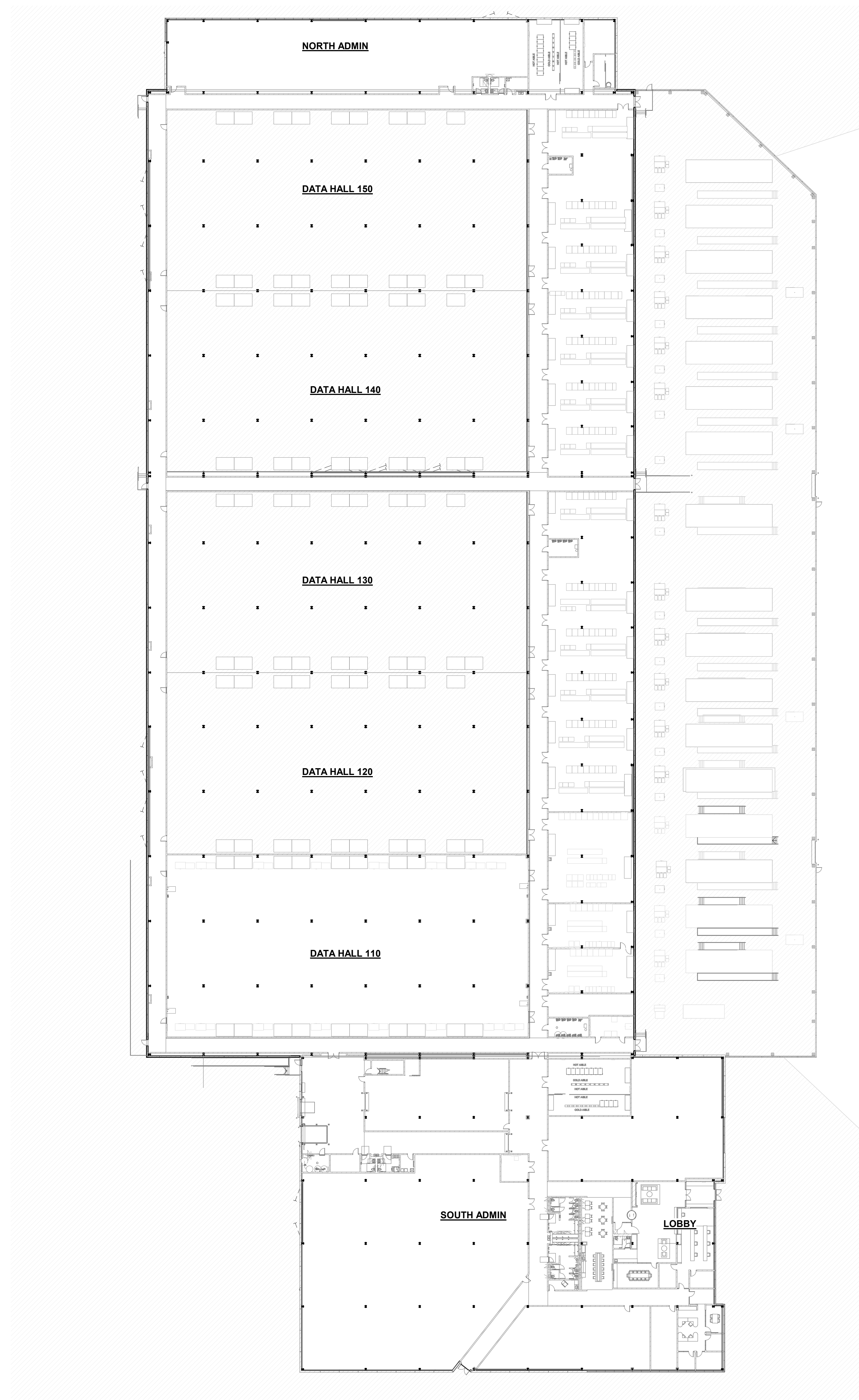
Date: 08/26/22

Drawn By: RTW

Checked By: HA

Project Status

CS1-1



Client



Architect / MEP Engineers

HIGHLAND
ASSOCIATES
Architecture | Engineering | Interior Design

One East 33rd Street
New York, NY 10016
(212) 681-0200 (office)
www.hiandassociates.com

New York • Pennsylvania • Florida

Structural Engineer

DESIMONE

60 MAN MAR DRIVE, UNIT #2
PLAINVILLE, MA 02762
T. 508.384.0163
www.de-simone.com

Precast Engineer

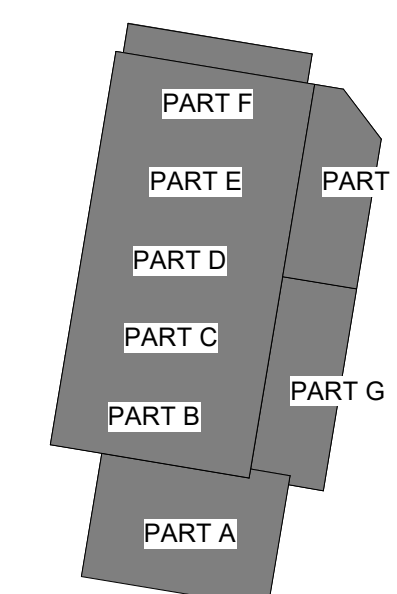
Security Consultant

Site/Civil Consultant

Site/Civil Consultant:
Kimley»Horn

1 N Lexington Ave, Suite 1575
White Plains, NY 10601
ph: 914-368-9200
www.kimley-horn.com

Key Plan:

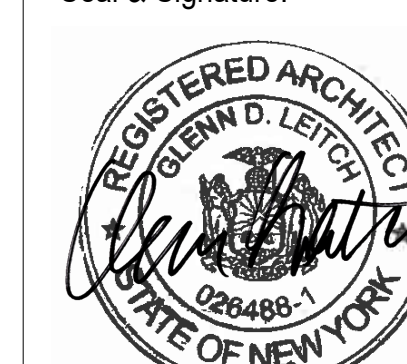
[illegible]

Project:

DATABANK
LGA-3

2000 Corporate Dr,
Orangeburg, NY 10962
BUILDING # 01

Seal & Signature:



GLENN D. LEITCH
NY RA No. 026488

MASTERPLANS

Project Number: 0001-0000

Date: 08/26/22

Drawn By: ERM

Checked By:	HA
-------------	----

Project Status

A002-1



Client:



DATABANK

Architect / MEP Engineers:

HIGHLAND
ASSOCIATES
Architecture | Engineering | Interior Design

One East 33rd Street
New York, NY 10016
(212) 681-0200 (office)
www.hilandassociates.com

New York • Pennsylvania • Florida

Structural Engineer:

DESIMONE

60 MAN MAR DRIVE, UNIT #2
PLAINVILLE, MA 02762
T. 508.384.0163
www.de-simone.com

Precast Engineer:

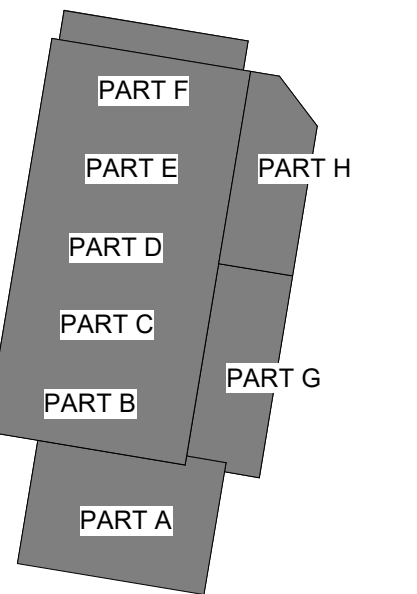
Security Consultant:

Site/Civil Consultant:

Kimley»»Horn

1 N Lexington Ave, Suite 1575
White Plains, NY 10601
ph: 914-368-9200
www.kimley-horn.com

Key Plan:

[illegible]

Project:

DATABANK

LGA-3

2000 Corporate Dr,
Orangeburg, NY 10962
BUILDING # 01

Seal & Signature:



GLENN D. LEITCH
NY RA No. 026488-1

BUILDING PERSPECTIVES & RENDERINGS

Project Number: 2021-333D

Date: 08/26/22

Drawn By: ERM

Checked By: HA

Project Status

A003-1



Client:



DATABANK

Architect / MEP Engineers:

HIGHLAND
ASSOCIATES
Architecture | Engineering | Interior Design

One East 33rd Street
New York, NY 10016
(212) 681-0200 (office)
www.highlandassociates.com

York • Pennsylvania • Florida

Structural Engineer:

DESIMONE

60 MAN MAR DRIVE, UNIT #2
PLAINVILLE, MA 02762
T. 508.384.0163
www.de-simone.com

Precast Engineer:

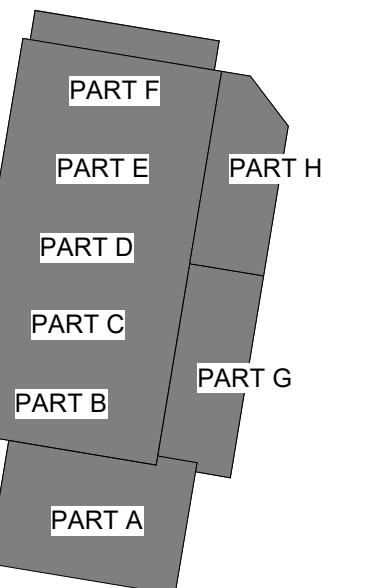
Security Consultant:

Site/Civil Consultant:

Kimley»Horn

N Lexington Ave, Suite 1575
White Plains, NY 10601
ph: 914-368-9200
www.kimley-horn.com

Key Plan:

[illegible]

Project:

DATABANK
LGA-3

2000 Corporate Dr,
Orangeburg, NY 10962
BUILDING # 01

Seal & Signature:



GLENN D. LEITCH
Y RA No. 026488-1

BUILDING PERSPETIVES & RENDERINGS

Project Number: 2021-333D

Date: 08/26/22

Drawn By: ERM

Checked By: HA

Project Status

A004-1



Client:



Architect / MEP Engineers:

HIGHLAND
ASSOCIATES
Architecture | Engineering | Interior Design

One East 33rd Street
New York, NY 10016
(212) 681-0200 (office)
www.hilandassociates.com

New York • Pennsylvania • Florida

Structural Engineer:

DESIMONE

60 MAN MAR DRIVE, UNIT #2
PLAINVILLE, MA 02762
T. 508.384.0163
www.de-simone.com

Precast Engineer:

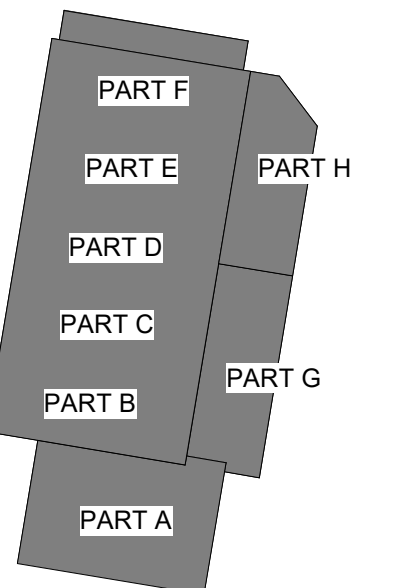
Security Consultant:

Site/Civil Consultant:

Kimley»Horn

1 N Lexington Ave, Suite 1575
White Plains, NY 10601
ph: 914-368-9200
www.kimley-horn.com

Key Plan:

[illegible]

Project:

DATABANK
LGA-3

2000 Corporate Dr,
Orangeburg, NY 10962
BUILDING # 01

Seal & Signature:



GLENN D. LEITCH
NY RA No. 026488-1

BUILDING PERSPECTIVES & RENDERINGS

Project Number: 2021-232D

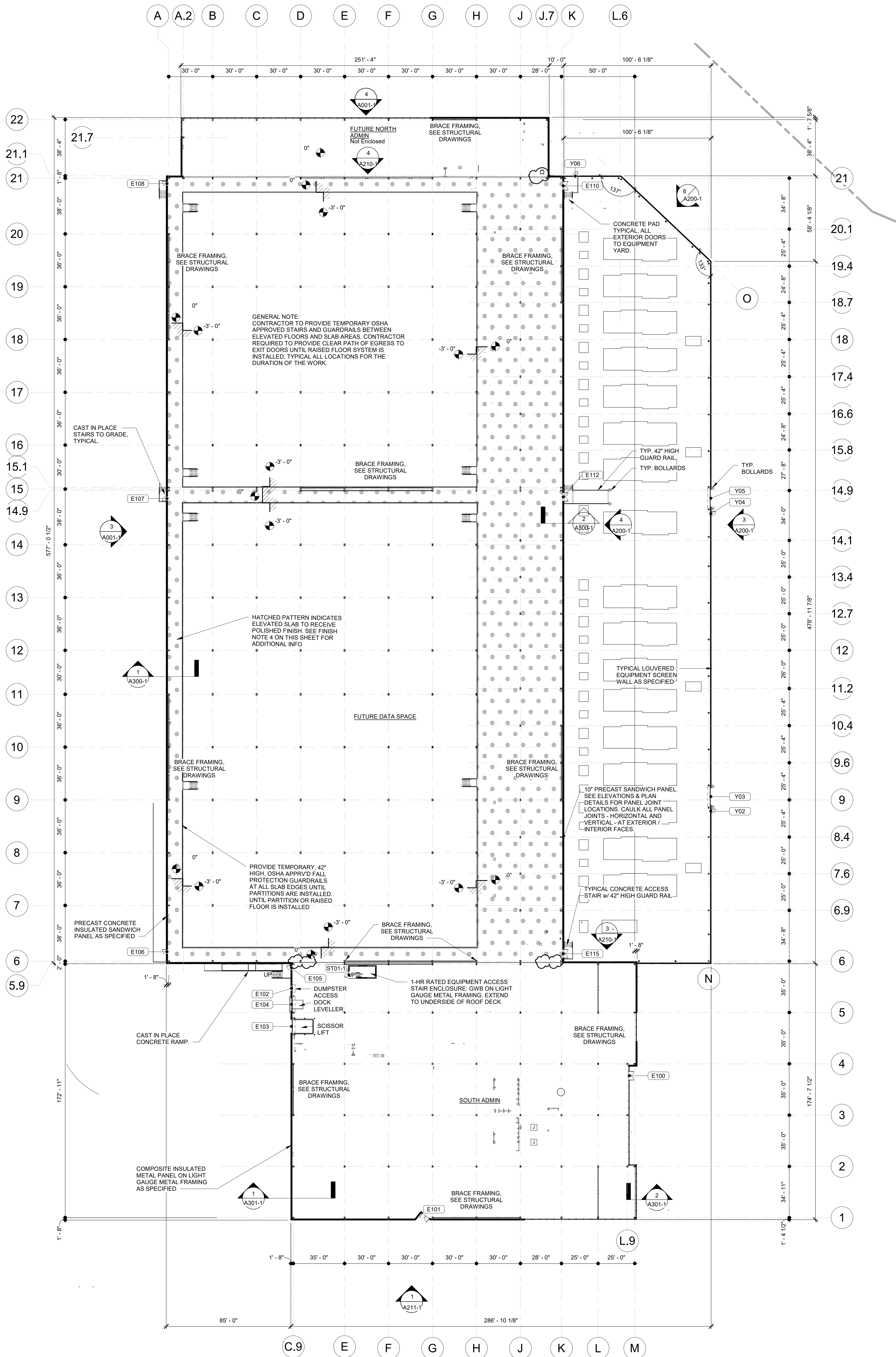
Date: 08/26/22

Drawn By: ERM

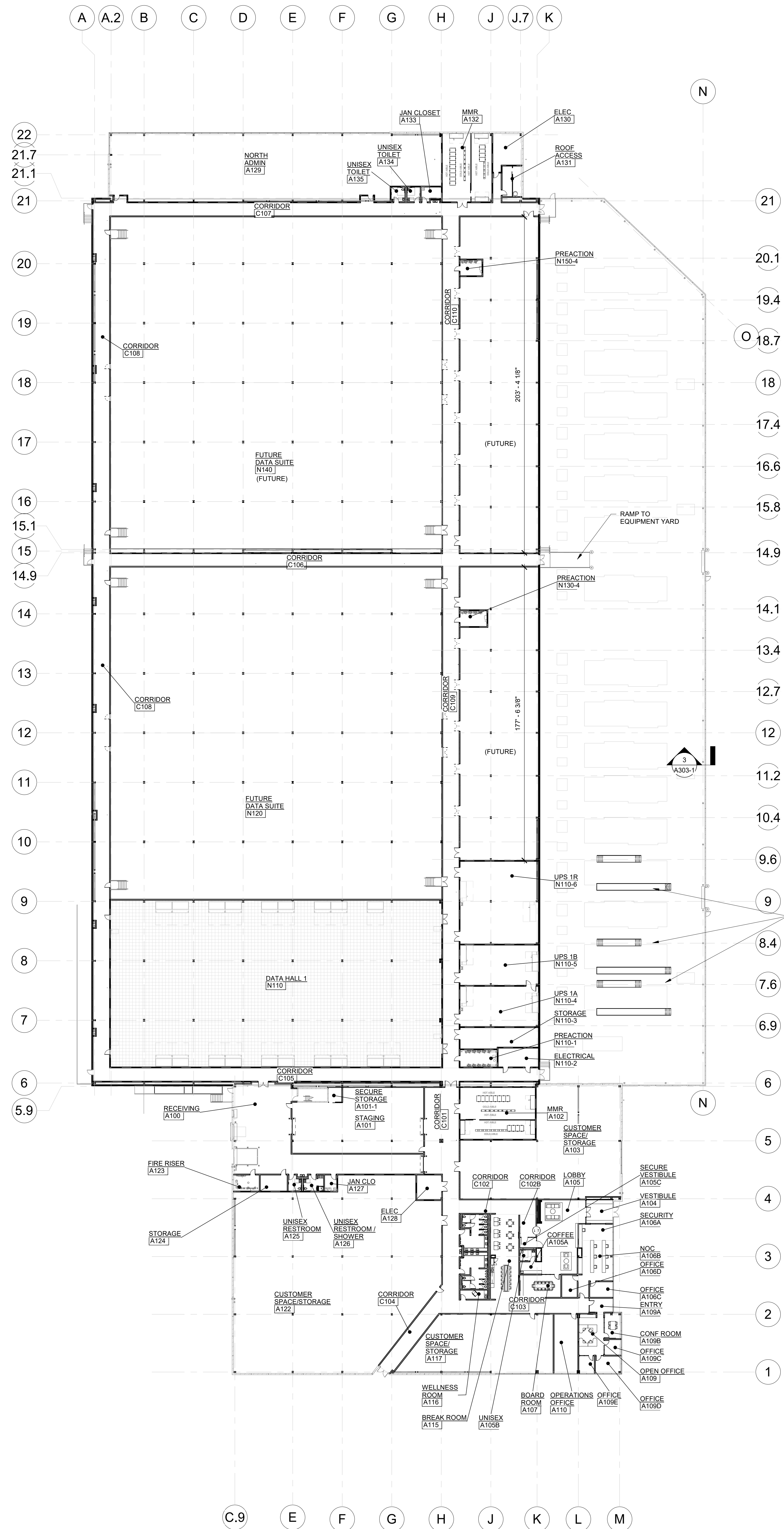
Checked By: _____ HA

Project Status

A005-1



1
A100-1
COMPOSITE FIRST FLOOR - SLAB/SUB FLOOR PLAN
SCALE: 1" = 30'-0"



2
A100-1
COMPOSITE FIRST FLOOR - FIT OUT PLAN
SCALE: 1" = 30'-0"

SHELL CONSTRUCTION REFERENCE NOTES:
REFERENCE G002-1 FOR: SYMBOL, LEGEND, GENERAL NOTES, ABBREVIATIONS AND WALL CONSTRUCTION TYPES
REFERENCE PRECAST DRAWINGS FOR INFORMATION RELATED TO EXTERIOR REINFORCED CONCRETE PANELS, ALL INFO. SHOWN ON ARCHITECTURAL DOCUMENTS REFERRING REINFORCED CONCRETE PRECAST PANELS ARE FOR INFORMATIONAL PURPOSES ONLY.
FINAL DESIGN, REINFORCING, REVEALS, ETC., MAY DIFFER. PRECAST YARD CONCRETE WALL TO BE DELEGATED DESIGN. ALL FINAL CALCULATIONS AND REINFORCING DESIGNS TO BE SIGNED AND SEALED BY PANEL MANUFACTURER(S). SEE PRECAST DRAWINGS FOR FINAL DESIGN AND ADDITIONAL INFORMATION.
REFERENCE STRUCTURAL DRAWINGS FOR STRUCTURAL STEEL FRAMING AND CONCRETE FOOTINGS AND FOUNDATIONS
REFERENCE ELECTRICAL AND PLUMBING DRAWINGS FOR ITEMS RELATED TO SAID TRADES

SAFETY NOTES:
CONTRACTOR IS RESPONSIBLE TO PROVIDE OSHA APPROVED TEMPORARY EDGE FALL PROTECTION AT ALL HAZARDOUS LOCATIONS. PLANS INDICATE MAJOR AREAS.
EDGE PROTECTION IS NOT LIMITED TO SAID AREAS AND CONTRACTOR IS RESPONSIBLE TO PROTECT ALL AREAS THROUGHOUT THE ENTIRETY OF CONSTRUCTION THROUGHOUT ALL PHASES.
OTHER AREAS REQUIRED BUT NOT LIMITED TO:
ELEVATOR OPENINGS, ROOF EDGE WITH LESS THAN 42" OF PARAPET, SLAB EDGES BETWEEN DATA AND OFFICE AREA, ETC...

INTERIOR FINISH NOTES:
1. ALL STRUCTURAL STEEL TO HAVE SHOP OR FIELD APPLIED PRIMER AND PREPARED FOR FUTURE FINISHES.
2. ALL DRYWALL PARTITIONS TO BE TAPED, SPACKLED, AND PREPARED TO RECEIVE FUTURE FINISHES.
3. ALL CONCRETE SLABS ON GRADE OR ELEVATED TO BE SEALED. SEE SPECIFICATION FOR ADDITIONAL INFORMATION.
4. ALL ELEVATED SLABS AS MARKED ON PLANS TO BE POLISHED. SEE SPECIFICATION FOR ADDITIONAL INFORMATION
5. ALL INTERIOR DOORS TO BE PRIMED AND PREPARED TO RECEIVE FUTURE FINISHES

FRP PLATFORM, STAIRS AND GUARDRAIL, TYPICAL AS SHOWN AT DAY ONE GENERATORS

Client:

Architect / MEP Engineers:

Structural Engineer:

Precast Engineer:

Security Consultant:

Site/Civil Consultant:

Key Plan:

Project:

Seal & Signature:

Project Number:

Date:

Drawn By:

Checked By:

Project Status:

HIGHLAND ASSOCIATES
Architecture | Engineering | Interior Design
One East 33rd Street
New York, NY 10016
(212) 681-6200 (office)
www.hilandassociates.com
New York • Pennsylvania • Florida

DESIMONE
60 MANI MAR DRIVE, UNIT #2
PLAINVILLE, MA 02762
T: 508.354.0163
www.de-simone.com

Kimley»Horn
1 N Lexington Ave, Suite 1575
White Plains, NY 10601
ph: 914-368-9200
www.kimley-horn.com

Part A, B, C, D, E, F, G, H, I, J, K, L, M, N, O, P, Q, R, S, T, U, V, W, X, Y, Z

No.	Description	Date
1	ISSUED FOR BID	08/26/22
2	ISSUED FOR ACABOR APPLICATION	09/21/22
3		
4		
5		
6		
7		
8		
9		
10		
11		
12		
13		
14		
15		
16		
17		
18		
19		
20		
21		
22		

DATABANK LGA-3
2000 Corporate Dr.
Orangeburg, NY 10962
BUILDING # 01

GLENN D. LEITCH
NY RA No. 026486-1

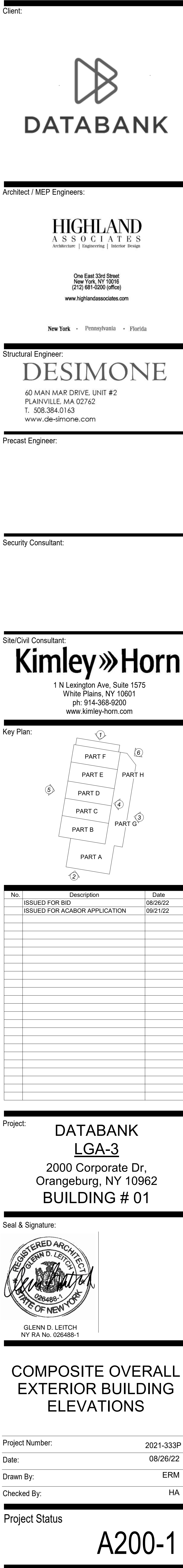
FIRST FLOOR SUBFLOOR AND INTERIOR FITOUT COMPOSITE PLANS

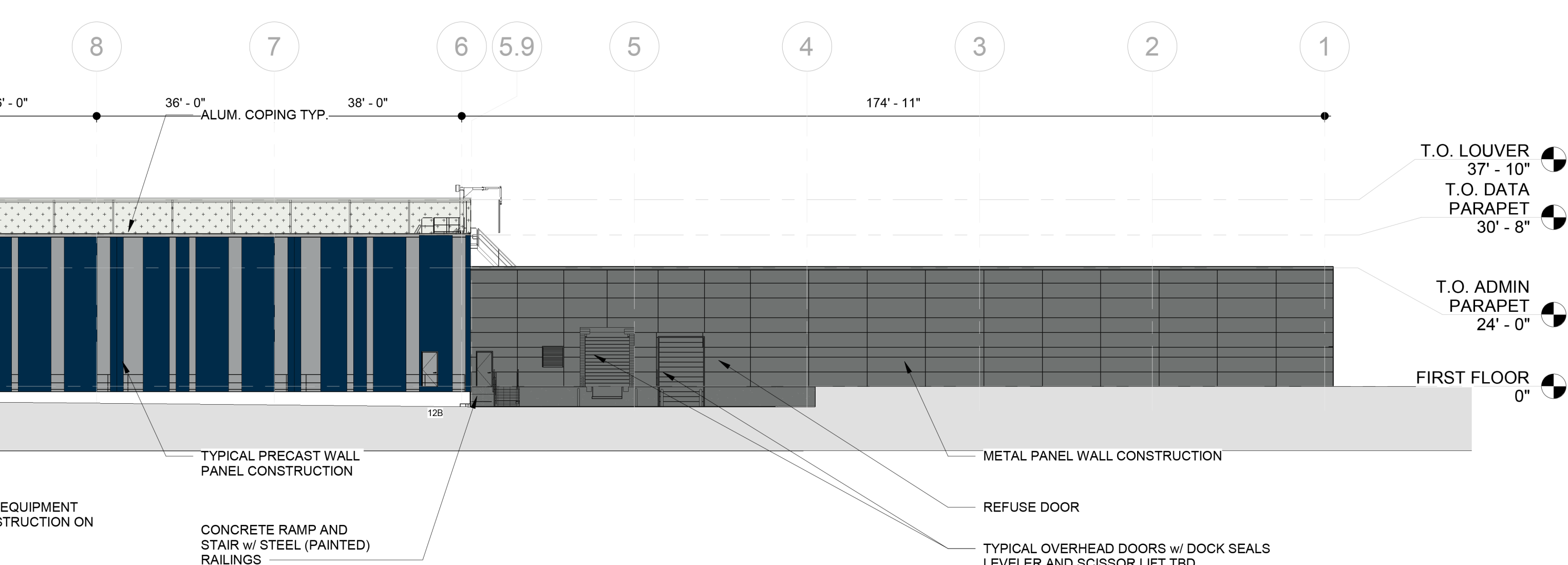
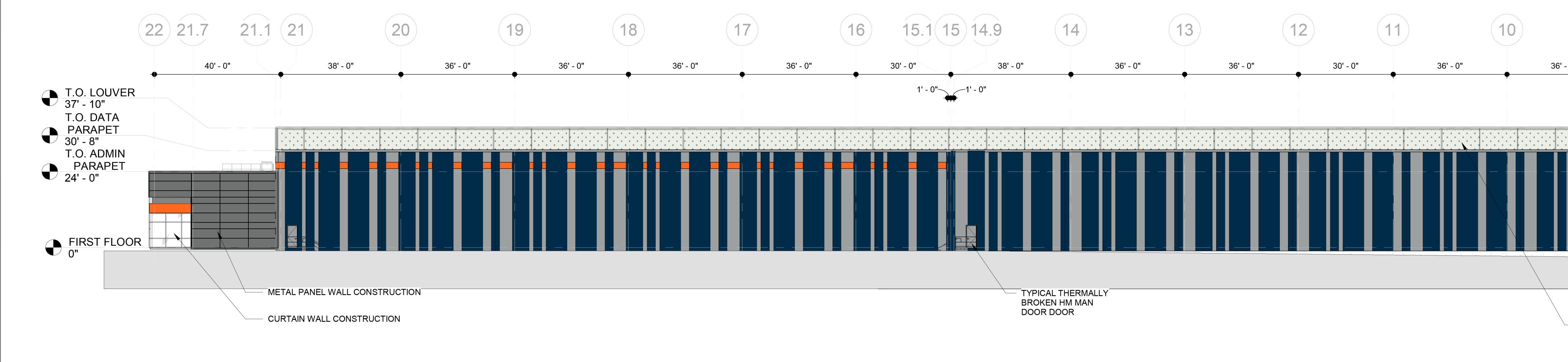
2021-333P
08/26/22
ERM/RTW
HA

A100-1



A130-1






Structural Engineer:

DESIMONE

60 MAN MAR DRIVE, UNIT #2
PLAINVILLE, MA 02762
T. 508.384.0163
www.de-simone.com

Key Plan:



The Key Plan shows a vertical stack of eight parts, labeled PART A through PART H. PART A is at the bottom, followed by PART B, PART C, PART D, PART E, PART F, PART G, and PART H at the top. The parts are represented by overlapping rectangular shapes.

Project: DATABANK
LGA-3
2000 Corporate Dr,
Orangeburg, NY 10962
BUILDING # 01

COMPOSITE OVERALL EXTERIOR BUILDING ELEVATIONS

Project Number:	2021-333P
Date:	08/26/22
Drawn By:	ERM
Checked By:	HA

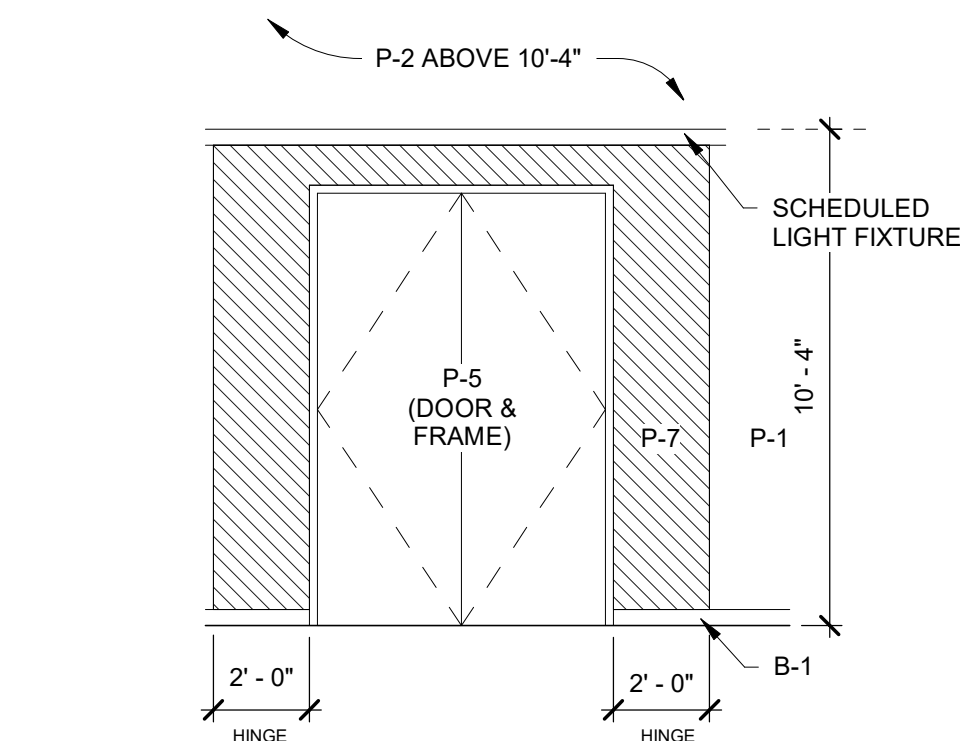
Project Status

A201-1

ROOM SCHEDULE - DATA												
NO	NAME	SPACE	FLOOR	BASE	WALLS				CEILING	DOORS	FRAMES	FINISH NOTES
N	E	S	W	FIN								
FIRST FLOOR												
A100	RECEIVING	SE-1	WP-1	WP-1P-1	WP-1P-1	WP-1P-1	WP-1P-1	WP-1P-1	C-3AP-C	P-5	P-5	
A101	STAGING	SE-1	WP-1	WP-1P-1	WP-1P-1	WP-1P-1	WP-1P-1	WP-1P-1	C-3AP-C	P-5	P-5	
A101-1	SECURE STORAGE	SE-1	WP-1	WP-1P-1	WP-1P-1	WP-1P-1	WP-1P-1	WP-1P-1	C-3AP-C	P-5	P-5	
A102	MMR	SE-1	B-1	P-1	P-1	P-1	P-1	P-1	C-3BP-C	P-5	P-5	SEE CAGE GATE ELEVATION FOR NOTES REGARDING INTERNAL DOORING WALL
A103	CUSTOMER SPACE/STORAGE	PC-1	WP-1	WP-1P-1	WP-1P-1	WP-1P-1	WP-1P-1	WP-1P-1	C-3BP-C	P-5	P-5	INSIDE FACE OF WALLS UNFINISHED UNTIL FUTURE TENANT FITOUT
A104	VESTIBULE	PC-1	WP-1	WP-1P-1	WP-1P-1	WP-1P-1	WP-1P-1	WP-1P-1	C-3BP-C	P-5	P-5	
A105	LOBBY	PC-1	WP-1	WP-1P-1	WP-1P-1	WP-1P-1	WP-1P-1	WP-1P-1	C-3BP-C	P-5	P-5	
A105A	COFFEE	PC-1	WP-1	WP-1P-1	WP-1P-1	WP-1P-1	WP-1P-1	WP-1P-1	C-3BP-C	P-5	P-5	
A106	UNISEX	FT-1	B-3	WT-3	P-1	P-1	P-1	P-1	C-1	P-5	P-5	
A106C	SECURE VESTIBULE	PC-1	B-4	P-1P-2	P-1P-2	P-1P-2	P-1P-2	P-1P-2	C-1	P-5	P-5	
A106A	SECURITY	CP-1	B-4	P-1	GLASS	-	P-1	ACT-2		ALUM	ALUM	
A106B	NOC	CP-1	B-4	P-1	P-1	P-1	P-1	P-1	ACT-1	ALUM	ALUM	
A106C	OFFICE	CP-1	B-4	P-1	GLASS	P-1	P-1	P-1	ACT-1	ALUM	ALUM	
A106D	OFFICE	CP-1	B-4	P-1	P-1	P-1	P-1	P-1	ACT-2	ALUM	ALUM	
A107	BOARD ROOM	CP-1	B-4	P-1	P-1	P-1	P-1	P-1	ACT-2	ALUM	ALUM	
A109	OPEN OFFICE	CP-1	B-4	P-1	P-1	P-1	P-1	P-1	ACT-2	ALUM	ALUM	
A109A	ENTRY	CP-1	B-4	P-1	GLASS	P-1	P-1	P-1	ACT-2	ALUM	ALUM	
A109B	CONF ROOM	CP-1	B-4	P-1	GLASS	P-1	P-1	P-1	ACT-1	ALUM	ALUM	
A109C	OFFICE	CP-1	B-4	P-1	GLASS	P-1	P-1	P-1	ACT-1	ALUM	ALUM	
A109D	OFFICE	CP-1	B-4	P-1	GLASS	GLASS	P-1	P-1	ACT-1	ALUM	ALUM	
A109E	OFFICE	CP-1	B-4	P-1	P-1	GLASS	P-1	P-1	ACT-1	ALUM	ALUM	
A110	OPERATIONS OFFICE	CP-1	B-1	P-1	P-1	P-1	P-1	P-1	ACT-1	P-5	P-5	
A115	BREAK ROOM	FT-1	B-3	-	P-1	-	P-1	C-3AP-C				SEE INTERIOR ELEVATIONS FOR FINISH DESIGNATIONS
A116	WELLNESS ROOM	FT-1	B-3	P-1	P-1	P-1	P-1	P-1	C-1	P-5	P-5	
A117	CUSTOMER SPACE/STORAGE	FT-1FT-2	B-3	WT-3P-1	WT-3P-1	WT-3P-1	WT-3P-1	WT-3P-1	C-1C-2	P-5	P-5	INSIDE FACE OF WALLS UNFINISHED UNTIL FUTURE TENANT FITOUT
A120	WOMEN'S ROOM	FT-1FT-2	B-3	WT-3P-1	WT-3P-1	WT-3P-1	WT-3P-1	WT-3P-1	C-1C-2	P-5	P-5	
A122	CUSTOMER SPACE/STORAGE	FT-1FT-2	B-3	WT-3P-1	WT-3P-1	WT-3P-1	WT-3P-1	WT-3P-1	C-1C-2	P-5	P-5	
A123	FIRE RISER	SE-1	B-1	P-1	P-1	P-1	P-1	P-1	C-3AP-C	P-5	P-5	
A124	STORAGE	SE-1	B-1	P-1	P-1	P-1	P-1	P-1	C-3AP-C	P-5	P-5	
A125	UNISEX RESTROOM	SE-1	B-1	P-1	P-1	P-1	P-1	P-1	C-3AP-C	P-5	P-5	
A126	UNISEX RESTROOM / SHOWER	FT-1	B-3	P-1	P-1	P-1	P-1	P-1	C-1	P-5	P-5	
A127	JAN CLO	SE-1	WP-2	WP-2P-1	WP-2P-1	WP-2P-1	WP-2P-1	WP-2P-1	C-3AP-C	P-5	P-5	
A128	ELEC	SE-1	B-1	P-1	P-1	P-1	P-1	P-1	C-3AP-C	P-5	P-5	
A129	NORTH ADMIN	SE-1	B-1	P-1	P-1	P-1	P-1	P-1	C-3AP-C	P-5	P-5	INSIDE FACE OF WALLS UNFINISHED UNTIL FUTURE TENANT FITOUT
A130	ELEC	SE-1	B-1	P-1	P-1	P-1	P-1	P-1	C-3AP-C	P-5	P-5	
A131	ROOF ACCESS	SE-1	B-1	P-1	P-1	P-1	P-1	P-1	C-3AP-C	P-5	P-5	
A132	MMR	SE-1	B-1	P-1	P-1	P-1	P-1	P-1	C-3BP-C	P-5	P-5	SEE CAGE GATE ELEVATION FOR NOTES REGARDING INTERNAL DEMISING WALL
A133	JAN CLOSET	SE-1	WP-2	WP-2P-1	WP-2P-1	WP-2P-1	WP-2P-1	WP-2P-1	C-3AP-C	P-5	P-5	
A134	UNISEX TOILET	FT-1	B-3	P-1	WT-3	P-1	P-1	P-1	C-1	P-5	P-5	
A135	UNISEX TOILET	FT-1	B-3	P-1	WT-3	P-1	P-1	P-1	C-1	P-5	P-5	
C100	CORRIDOR	SE-1	WP-1	WP-1P-1P-2	P-1P-2	WP-1P-1P-2	WP-1P-1P-2	WP-1P-1P-2	C-3AP-C	P-5	P-5	*P-4 AT DRINKING FOUNTAIN ALCOVE(ALL SIDES)
C101	CORRIDOR	SE-1	B-1	-	P-1P-2*P-4	-	P-1P-2	P-1P-2	C-3AP-C	P-5	P-5	*P-4 AT DRINKING FOUNTAIN ALCOVE (ALL SIDES)
C102	CORRIDOR	SE-1	B-1	MP-1P-1P-2	P-1P-2	P-1P-2	P-1P-2	P-1P-2	C-3AP-C	P-5	P-5	
C102B	CORRIDOR	SE-1	B-1	-	P-1P-2	P-1P-2	P-1P-2	P-1P-2	C-3AP-C	P-5	P-5	
C103	CORRIDOR	SE-1	B-1	P-1P-2	P-1P-2	P-1P-2	P-1P-2	P-1P-2	C-3AP-C	P-5	P-5	
C104	CORRIDOR	SE-1	B-1	P-1	P-1	P-1	P-1	P-1	C-3AP-C	P-5	P-5	
C105	CORRIDOR	SE-1	B-1	WP-1P-1P-2	P-1P-2	WP-1P-1P-2	WP-1P-1P-2	WP-1P-1P-2	C-3AP-C	P-5	P-5	
C106	CORRIDOR	SE-1	B-1	WP-1P-1P-2	P-1P-2	WP-1P-1P-2	WP-1P-1P-2	WP-1P-1P-2	C-3AP-C	P-5	P-5	
C107	CORRIDOR	SE-1	B-1	WP-1P-1P-2	P-1P-2	WP-1P-1P-2	WP-1P-1P-2	WP-1P-1P-2	C-3AP-C	P-5	P-5	*P-4 AT DOOR AND DRINKING FOUNTAIN ALCOVES (ALL SIDES)
C108	CORRIDOR	SE-1	B-1	-	WP-1P-1P-2	-	WP-1P-1P-2	WP-1P-1P-2	C-3AP-C	P-5	P-5	
C109	CORRIDOR	SE-1	B-1	-	WP-1P-1P-2	-	WP-1P-1P-2	WP-1P-1P-2	C-3AP-C	P-5	P-5	
C110	CORRIDOR	SE-1	B-1	-	WP-1P-1P-2	-	WP-1P-1P-2	WP-1P-1P-2	C-3AP-C	P-5	P-5	
N110	DATA HALL 1	SE-1	WP-1	WP-1P-1	WP-1P-1	WP-1P-1	WP-1P-1	WP-1P-1	C-3AP-C	P-5	P-5	
N110-1	PREACTION	SE-1	B-1	P-1	P-1	P-1	P-1	P-1	C-3AP-C	P-5	P-5	
N110-2	ELECTRICAL	SE-1	B-1	P-1	P-1	P-1	P-1	P-1	C-3AP-C	P-5	P-5	
N110-3	STORAGE	SE-1	B-1	P-1	P-1	P-1	P-1	P-1	C-3AP-C	P-5	P-5	
N110-4	UPS 1A	SE-1	B-1	P-1	P-1	P-1	P-1	P-1	C-3AP-C	P-5	P-5	
N110-5	UPS 1B	SE-1	B-1	P-1	P-1	P-1	P-1	P-1	C-3AP-C	P-5	P-5	
N110-6	UPS 1R	SE-1	B-1	P-1	P-1	P-1	P-1	P-1	C-3AP-C	P-5	P-5	
N120	FUTURE DATA SUITE	SE-1	-	-	-	-	-	-	-	P-6	P-6	INSIDE FACE OF WALLS UNFINISHED UNTIL FUTURE TENANT FITOUT
N120-2	UPS 1D	SE-1	B-1	P-1	P-1	P-1	P-1	P-1	C-3AP-C	P-5	P-5	
N120-3	UPS 1E	SE-1	B-1	P-1	P-1	P-1	P-1	P-1	C-3AP-C	P-5	P-5	
N120-4	FUTURE UPS	SE-1	-	-	-	-	-	-	-	P-6	P-6	INSIDE FACE OF WALLS UNFINISHED UNTIL FUTURE TENANT FITOUT
N130	FUTURE DATA SUITE	SE-1	-	-	-	-	-	-	-	P-6	P-6	INSIDE FACE OF WALLS UNFINISHED UNTIL FUTURE TENANT FITOUT
N130-1	FUTURE UPS	SE-1	-	-	-	-	-	-	-	P-6	P-6	INSIDE FACE OF WALLS UNFINISHED UNTIL FUTURE TENANT FITOUT
N130-2	FUTURE UPS	SE-1	-	-	-	-	-	-	-	P-6	P-6	INSIDE FACE OF WALLS UNFINISHED UNTIL FUTURE TENANT FITOUT
N130-3	CUSTOMER SPACE/STORAGE	SE-1	B-1	P-1	P-1	P-1	P-1	P-1	C-3A	P-5	P-5	
N130-4	PREACTION	SE-1	B-1	P-1	P-1	P-1	P-1	P-1	C-3A	P-5	P-5	
N130-5	FUTURE UPS	SE-1	-	-	-	-	-	-	-	P-6	P-6	INSIDE FACE OF WALLS UNFINISHED UNTIL FUTURE TENANT FITOUT
N140	FUTURE DATA SUITE	SE-1	-	-	-	-	-	-	-	P-6	P-6	INSIDE FACE OF WALLS UNFINISHED UNTIL FUTURE TENANT FITOUT
N140-1	UPS 2A	SE-1	-	-	-	-	-	-	-	P-6	P-6	INSIDE FACE OF WALLS UNFINISHED UNTIL FUTURE TENANT FITOUT
N140-2	UPS 2B	SE-1	-	-	-	-	-	-	-	P-6	P-6	INSIDE FACE OF WALLS UNFINISHED UNTIL FUTURE TENANT FITOUT
N140-3	FUTURE UPS	SE-1	-	-	-	-	-	-	-	P-6	P-6	INSIDE FACE OF WALLS UNFINISHED UNTIL FUTURE TENANT FITOUT
N140-4	UPS 2C	SE-1	-	-	-	-	-	-	-	P-6	P-6	INSIDE FACE OF WALLS UNFINISHED UNTIL FUTURE TENANT FITOUT
N150	FUTURE DATA SUITE	SE-1	-	-	-	-	-	-	-	P-6	P-6	INSIDE FACE OF WALLS UNFINISHED UNTIL FUTURE TENANT FITOUT
N150-1	UPS 2D	SE-1	-	-	-	-	-	-	-	P-6	P-6	INSIDE FACE OF WALLS UNFINISHED UNTIL FUTURE TENANT FITOUT
N150-2	UPS 2E	SE-1	-	-	-	-	-	-	-	P-6	P-6	INSIDE FACE OF WALLS UNFINISHED UNTIL FUTURE TENANT FITOUT
N150-3	CUSTOMER SPACE/STORAGE	SE-1	B-1	P-1	P-1	P-1	P-1	P-1	C-3A	P-5	P-5	
N150-4	PREACTION	SE-1	B-1	P-1	P-1	P-1	P-1	P-1	C-3A	P-5	P-5	
N150-5	FUTURE UPS	SE-1	-	-	-	-	-	-	-	P-6	P-6	INSIDE FACE OF WALLS UNFINISHED UNTIL FUTURE TENANT FITOUT
ST01	ROOF EQUIPMENT ACCESS STAIR #1	ST-1SE-1	B-1	P-4	P-4	P-4	P-4	P-4	C-3AP-C	P-5	P-5	

INTERIOR FINISHES GENERAL NOTES:

- FOR PURPOSES OF THE FINISH SCHEDULE, NORTH SHALL BE CONSIDERED TO BE THE TOP OF THE SHEET.
- UNLESS OTHERWISE NOTED, ALL PAINTED HM DOORS AND FRAMES SHALL BE SEMI-GLOSS FINISH.
- PAINT METAL FRAMES AROUND VISION PANELS IN WOOD AND/OR HM DOORS TO MATCH THE DOOR (OR FRAME) AT WHICH IT OCCURS.
- FACES AND DOORS OF ELECTRICAL PANELS, HATCHES, ACCESS PANELS, ETC WHICH OCCUR AT PAINTED WALLS (OR CEILINGS) OR WHICH SPAN A TRANSITION BETWEEN PAINT AND WALLCOVERING SHALL BE PAINTED TO MATCH THE WALL/CEILING SURFACE AT WHICH IT OCCURS. EXCEPTIONS SHALL BE ITEMS WHICH HAVE A STAINLESS STEEL, ANODIZED ALUMINUM, OR BRONZE FACTORY FINISH, OR NEW ITEMS FOR WHICH A FACTORY ENAMEL FINISH CAN BE SELECTED TO MATCH THE SPECIFIED WALL FINISH. SUCH ITEMS SHOULD BE SUBMITTED TO ARCHTTECT FOR REVIEW AND SELECTION.
- PROVIDE AND INSTALL REDUCERS, TERMINATIONS AND THRESHOLDS AS REQUIRED AT TRANSITIONS OF UN-LIKE FLOORINGS AND/OR TERMINATIONS OF FLOORINGS INCLUDING AT DOORWAYS AND OPEN THRESHOLDS. COLOR AND STYLE OF RESILIENT REDUCERS SHALL BE AS INDICATED IN THE FINISH LEGEND.
- AS PER CODE, DO NOT PAINT SPRINKLER HEADS, COVERS, OR TRIM.
- ALL PRODUCTS AND MATERIALS LISTED IN THE FINISH LEGEND SHALL BE INSTALLED PER MANUFACTURERS PREPARATION AND INSTALLATION SUGGESTIONS.
- CONTRACTOR TO REMOVE ALL DEBRIS (CONSTRUCTION OR OTHERWISE) INCLUDING BUT NOT LIMITED TO: ADHESIVES, SOAPS, WAX, OIL, SILICONE, DUST, DIRT, MISCELLANEOUS FASTENERS, ETC. AND PROVIDE A CLEAN AREA AND/OR SURFACE PRIOR TO INSTALLING ANY NEW FINISHES. USE OF MECHANICAL METHODS MAY BE NECESSARY AS RECOMMENDED BY THE MANUFACTURER. DO NOT USE SOLVENTS UNLESS RECOMMENDED BY MANUFACTURER. USE TROWELABLE LEVELING AND PATCHING COMPOUND TO FILL CRACKS, HOLES AND DEPRESSIONS IN SUBSTRATES.
- WALL PAINT IN TOILET ROOMS TO BE EPOXY.
- FLOORING CONTRACTOR TO CONDUCT PRE-INSTALLATION INSPECTION OF ALL SUBSTRATES TO DETERMINE FLOOR PREPARATION REQUIREMENTS.



TYPICAL DATA HALL ENTRY FINISH ELEVATION
SCALE: 1/4\" = 1'-0"

MATERIAL & FINISH SCHEDULE									
NAME	TYPE/FIXTURE	MANUFACTURER	PRODUCT	COLOR/ FINISH	LOCATION	SIZE	NOTES		
BASE									
B-1	BASE	ROPPE	RUBBER BASE	CHARCOAL		4" COVE			
B-2	BASE		WOOD BASE	P2 GLOSSY FINISH	LOBBY	1/2" X 4" SURFACE MOUNTED			
B-3	BASE	CONCEPT SURFACES	OCHRE	WEATHERED BLACK, MATTE	RESTROOMS	6" X 24" BASE			
B-4	BASE		WOOD BASE	GLOSSY FINISH - PAINT TO MATCH WALL					
B-5	BASE	CONCEPT SURFACES	OCHRE	TBD, MATTE					
CEILING									
ACT-1	CEILING	ARMSTRONG	OPTIMA, 2X2" TILE SUPRAFINE, 9/16" REGULAR GRID	WHITE	WHERE INDICATED ON DRAWINGS				
ACT-2	CEILING	ARMSTRONG	METAL WORKS TEGULAR	GUN METAL GRAY	LOBBY				
C-1	CEILING	SHERWIN WILLIAMS	SW7069	EXTRA WHITE	WHERE INDICATED ON DRAWINGS				
C-3A	CEILING	SHERWIN WILLIAMS	SW7069	IRON ORE - FLAT FINISH	PAINTED EXPOSED DECKING AND STRUCTURAL STEEL, WHERE INDICATED ON DRAWINGS				
C-3B	CEILING	SHERWIN WILLIAMS	WATER BORNE ACRYLIC DRYFALL PAINT SYSTEM	IRON ORE (SW7069)	PAINTED EXPOSED DECKING AND STRUCTURAL STEEL IN DATA HALL				
C-4	CEILING	ARMSTRONG	ACOUSUBUL	WHITE	SUSPENDED CEILING FEATURES IN CUSTOMER ENTRY SPACES, AND WHERE INDICATED	AS INDICATED ON DRAWINGS			
P-C	CEILING	SHERWIN WILLIAMS	SW2910 RED DOOR	RED, SEMI-GLOSS FINISH	OPEN CEILING EXPOSED FIRE PROTECTION PIPING				
DOORS AND FRAMES									
P-5	DOORS AND FRAMES	SHERWIN WILLIAMS		SW TO MATCH DATABANK DARK BLUE			COLOR HEX #00249 - DOORS AND FRAMES SEMI-GLOSS FINISH		
P-6	DOORS AND FRAMES	SHERWIN WILLIAMS	SW7069	EXTRA WHITE	FACE OF DOORS AND FRAMES ON DATA HALL SIDE		DOORS AND FRAMES SEMI-GLOSS FINISH		
P-7	DOORS AND FRAMES	SHERWIN WILLIAMS	SW7069	SW TO MATCH WALL FINISH P-2			DOORS AND FRAMES SEMI-GLOSS FINISH		
FLOOR									
CP-1	FLOOR	PATCH CRAFT	EASY ON THE EYES I0227	BIBBIDY BOBBIDI-BOO 00507		24" X 24"	ASHLAR PATTERN		
CP-2	FLOOR	MILLIKEN & CO	ORB 118-119	ORBIT BRUSH - STREAMLINE	ENTRY VESTIBULE		WALK OFF CARPET		
FT-1	FLOOR	CONCEPT SURFACES	OCHRE	WEATHERED BLACK, MATTE	RESTROOMS	18" X 36"	1/2" STAGGERED		
FT-2	FLOOR	TBD			RESTROOMS	18" X 36"	1/2" STAGGERED		
PC-1	FLOOR	B AGGREGATE		SALT AND PEPPER	CORRIDORS AND WHERE INDICATED				
RAF-1	FLOOR	ASM	CHEYENNE T0103		DATA HALLS				
RAF-2	FLOOR	ASM	FS300	CHEYENNE T0103	CORRIDORS/ EQUIPMENT PATHS IN DATA HALLS				
RT-2	FLOOR	ARMSTRONG	COALESCE	OXIDIZED VANITA ST882		18" X 36"			
SE-1	FLOOR	EUCLID CHEMICAL	ULTRA GUARD	STORM COULD 71	BELOW RAF, FACILITIES, OPERATIONS, AND WHERE NOTED				
ST-1	FLOOR	JOHNSONITE / TARKETT	CUBIS STYLE TREAD & RISER COMBO & LANDINGS	ALL STAIRS		2"	2" SQUARE NOSE W/ 2" BRACK GRIP TPE HOT & WIDTH SQUARE. VERIFY NOSE IN FIELD		
MILLWORK									
PL-1	MILLWORK	FORMICA	COLORCORE 2	MATTE WHITE FINISH					
PL-2	MILLWORK	WILSON ART	STANDARD LAMINATE	PINNACLE WALNUT 7992-38					
PL-3	MILLWORK	COLORCORE 2	COLORCORE 2	MATTE STORM FINISH 912C					
SS-1	MILLWORK	CAMBRIA		FIELDSTONE, 2160					
SS-2	MILLWORK	CONSENTINO	SILESTONE	STELLAR BLANCO 13					
SS-3	MILLWORK	KRON		FRUIT 6301					
TILE GROUT									
GT-1	TILE GROUT	LATICRETE		44 BRIGHT WHITE			USED WITH WT-3 IN BREAKROOM		
GT-2	TILE GROUT	LATICRETE		45 RAVEN			USED WITH WT-3 IN LOBBY BREAK AREA		
GT-3	TILE GROUT	LATICRETE		89 SMOKE GREY			USED WITH WT-1 IN RESTROOMS		
GT-4	TILE GROUT	LATICRETE		80 DUSTY GREY			USED WITH WT-4 AND L-1		
WALL FINISH									
AP-1	WALL FINISH	ANCHORAGE	GUILFORD OF MAINE	MIDNIGHT	WHERE INDICATED		SQUARE EDGE FABRIC WRAPPED ACOUSTIC PANEL, 1" THICK		
MP-1	WALL FINISH	MORIN	A-12-0	COLOR TO BE SELECTED FROM MFG STANDARD LINE	WHERE INDICATED ON DRAWINGS	NOMINAL 12" COVERAGE, LENGTHS AS INDICATED	18GA PAINTED STEEL PANEL, - HORIZONTAL JOINTS TAs INDICATED ON DRAWINGS		
P-1	WALL FINISH	SHERWIN WILLIAMS	SW7069	EXTRA WHITE					
P-2	WALL FINISH	SHERWIN WILLIAMS	SW7069	IRON ORE					
P-3	WALL FINISH	SHERWIN WILLIAMS		SW TO MATCH DATABANK DARK BLUE			COLOR HEX #00249		
P-4	WALL FINISH	SHERWIN WILLIAMS	SW7074	SOFTWARE					
P-7	WALL FINISH	SHERWIN WILLIAMS		SW TO MATCH DATABANK SLATE LIGHT			COLOR HEX #ba2d8d		
WPB-1	WALL FINISH	SHERWIN WILLIAMS	HEX R810 TBD		ALCOVES AT STAIRS				
WPB-2	WALL FINISH	CUSTOM ARCHITECTURAL MILLWORK	PAINTED PL WOOD PANEL SYSTEM	PRIME AND PAINT TO MATCH WALL FINISH P-1	WHERE INDICATED ON DRAWINGS	AS SHOWN ON DRAWINGS	1/2" OPEN REVEAL WITH EASED EDGES		
WPB-3	WALL FINISH	CUSTOM ARCHITECTURAL MILLWORK	CUSTOM PLYWOOD PANEL SYSTEM	PRIME AND PAINT TO MATCH WALL FINISH P-2	WHERE INDICATED ON DRAWINGS	AS SHOWN ON DRAWINGS	1/2" OPEN REVEAL WITH EASED EDGES		
WT-3	WALL FINISH	PORCELANOSA	MEDITE CALPE NIEVE	CALPE NIEVE 3" X 12"	WHERE INDICATED ON DRAWINGS	3" X 12"			
WT-4	WALL FINISH	CONCEPT SURFACES	OCHRE	WEATHERED BLACK, MATTE	WHERE INDICATED ON DRAWINGS	18" X 36"			
WT-5	WALL FINISH	CONCEPT SURFACES	OCHRE	TBD, MATTE	WHERE INDICATED ON DRAWINGS	18" X 36"			
WALL PROTECTION									
CG-1	WALL PROTECTION	IPC		BRUSHED STAINLESS CORNER GUARD	LOADING, SECURED STORAGE, AND DELIVERY AND EQUIPMENT CORRIDORS	3" LEG, 4"-0" HIGH	TYPE 304, 16 GAUGE		
CG-2	WALL PROTECTION	IPC		BRUSHED STAINLESS CORNER GUARD	TYP. AT OVERHEAD DOOR JAMBS w/ GVP FURNING	3" LEG, 6"-0" HIGH			
CG-3	WALL PROTECTION	IPC		BRUSHED STAINLESS CORNER GUARD	TYP. (4) SIDES AROUND TRASH COMPACTOR OPENING				
WP-1	WALL PROTECTION	IPC		20 GA. SHEET METAL WALL PROTECTION	LOADING, SECURED STORAGE, AND DELIVERY AND EQUIPMENT CORRIDORS	4'-0" ABOVE FINISHED FLOOR	22 GAUGE SHEET METAL PANELS, ADHERED TO WALLS		
WP-2	WALL PROTECTION	CRANE COMPOSITES	SEQUENTIA	WHITE	JANITOR CLOSETS		FIBERGLASS REINFORCED PLASTIC		
WINDOW TREATMENT									
WS-2	WINDOW TREATMENT	MECHO	MECHO 5X / DOUBLE SHADE	THERMO VEIL 1501 WHITE / CLASSIC BLACKOUT 0701 WHITE	WHERE INDICATED ON DRAWINGS		AS INDICATED ON DRAWINGS	DUAL SHADE, MANUAL OPERATION	