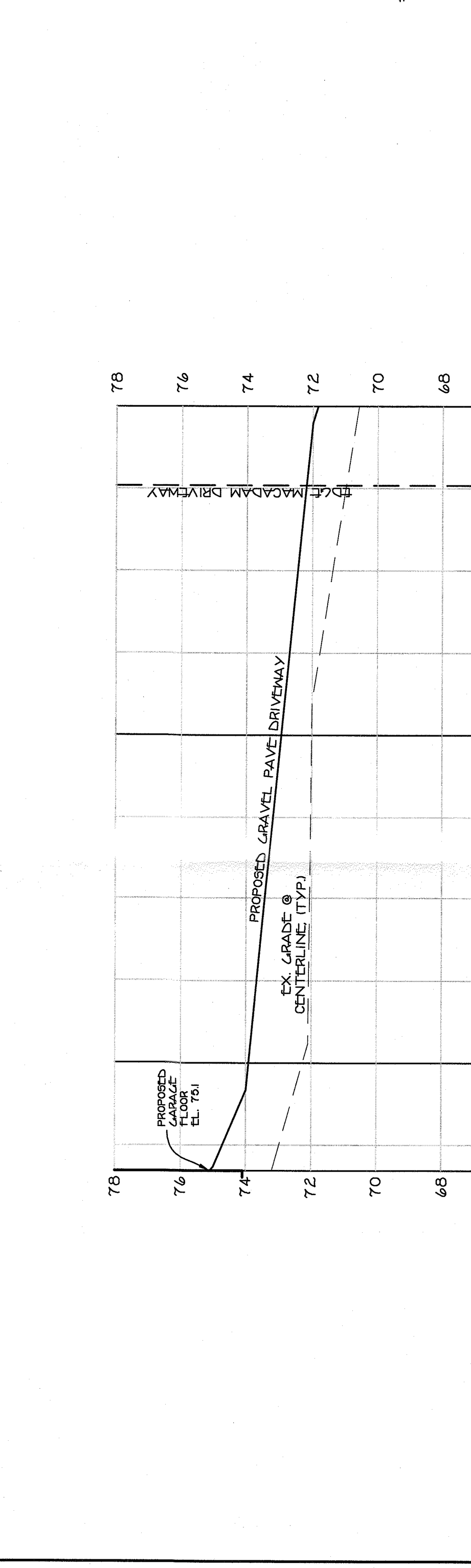
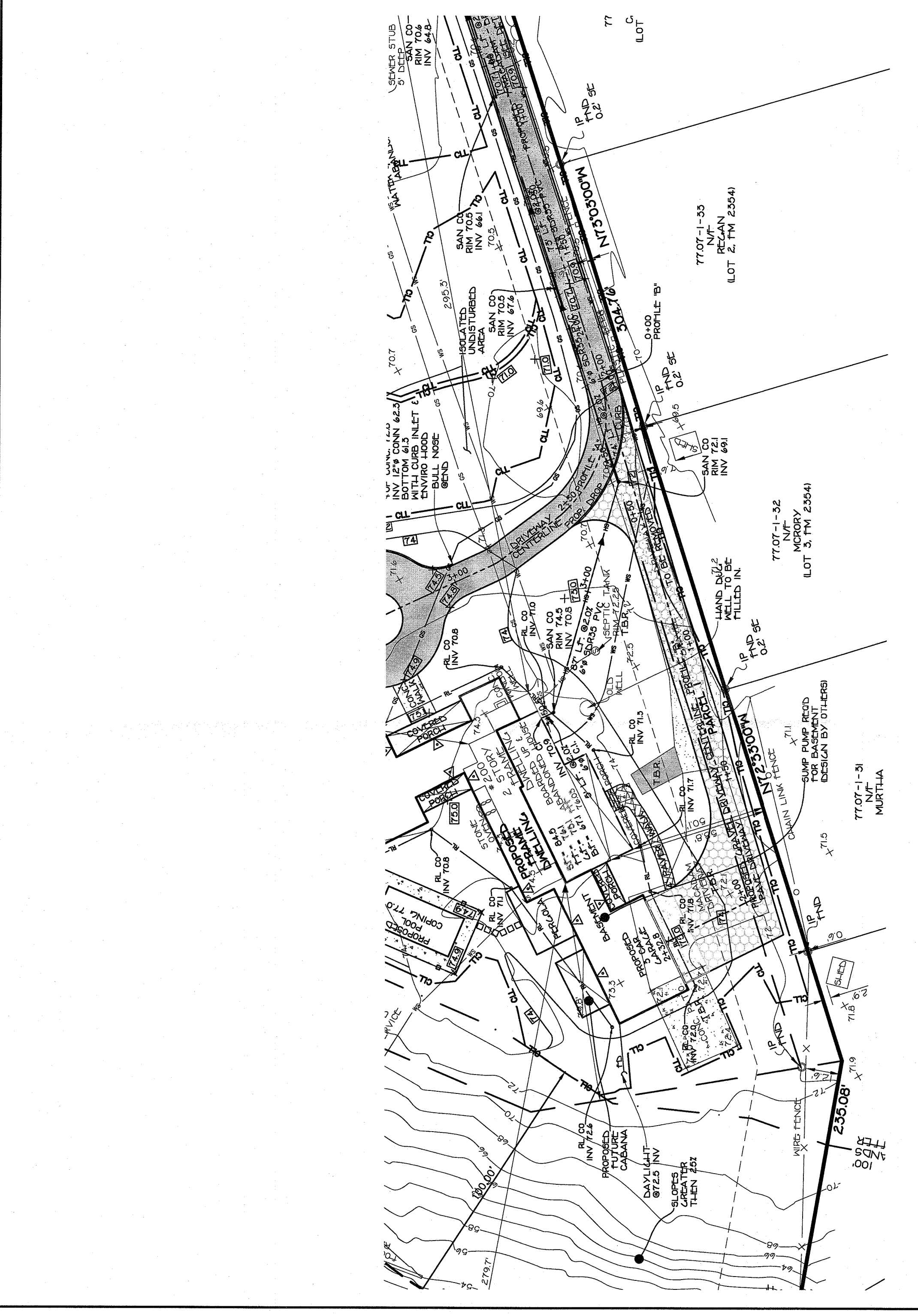


CENTERLINE PROPOSED DRIVEWAY PROFILE 'A' STA: 0+00 TO 4+76.8
SCALE: H-1"=30', V-1"=3'



CENTERLINE PROPOSED DRIVEWAY PROFILE 'B' STA: 0+00 TO 2+32.8
SCALE: H-1"=30', V-1"=3'

PROFILES (SHEET 2 OF 5)
FOR
200 KINGS HIGHWAY
LOCATED IN
TOWN OF ORANGETOWN
ROCKLAND COUNTY, NEW YORK
REV: PER COMMENTS - 03/14/2022
REV: ADJUSTED ELEVATIONS - 05/10/2022
REV: STAMP & FILE - 06/22/2022
REV: PER COMMENTS - 12/14/2021

STEVEN M. SPARACO, P.E.
REGISTERED PROFESSIONAL ENGINEER
HARRISMAN, NEW YORK 10924
(845) 782-8543



SPARACO & YOUNGBLOOD, PLLC
CIVIL ENGINEERING & LAND SURVEYING
SITE PLANNING
18 NORTH MAIN STREET
HARRISMAN, NY 10924
TEL: (845) 782-8543
FAX: (845) 782-5900
WWW.SPARACOSURVEYS.COM

SCALE	1" = 30'
DATE	AUG. 5, 2021
FILE #	YB-6621

TAX MAP REFERENCE SECT. 77.07, BLK. 1, LOT 35
 REFERENCES:
 A MAP ENTITLED "OLD MILL PARK" PREPARED BY WILLIAM
 A. YUSA, P.C. AND FILED IN THE ROCKLAND COUNTY CLERK'S
 OFFICE ON JUNE 7, 1995 AS MAP NUMBER 2394.

L 464, P. 363 (P10)
 INST. *2007-18071 (P10)
 L 588, P. 198
 L 863, P. 83
 L 256, P. 1994
 L 428, P. 33
 L 105, P. 30
 INST. *2001-42017
 INST. *2006-12748
 INST. *2009-20744

TREE LIST		
NO.	DIAMETER	SPECIES
T1	12"	YEW
T2	36"	CHESTNUT
T3	24"	MALBERRY
T4	28"	MAPLE
T5	18"	WALNUT
T6	20"	CHERRY
T7	30"	MALBERRY
T8	10"	ELM
T9	46"	OAK
T10	20"	MAPLE
T11	20"	BIRCH
T12	24"	MAPLE
T13	14"	MAPLE
T14	28"	ASH
T15	12"	WALNUT
T16	24"	LOCUST
T17	24"	MAPLE
T18	16"	MAPLE
T19	12"	OAK
T20	20"	LOCUST
T21	20"	MAPLE
T22	36"	MAPLE
T23	10"	BASSWOOD
T24	12"	MAPLE
T25	18"	MAPLE
T26	20"	MAPLE
T27	40"	OAK
T28	20"	MAPLE
T29	60"	TULIP
T30	28"	MAPLE
T31	18"	MAPLE
T32	20"	MAPLE
T33	14"	MAPLE
T34	24"	TULIP
T35	40"	MAPLE
T36	18"	MAPLE
T37	24"	MAPLE
T38	12"	MAPLE
T39	44"	TULIP
T40	20"	MAPLE
T41	20"	MAPLE
T42	40"	CHERRY
T43	8"	OAK
T44	36"	MAPLE
T45	50"	OAK
T46	24"	TULIP
T47	24"	MAPLE
T48	12"	ELM
T49	26"	MAPLE
T50	22"	BEECH
T51	24"	OAK
T52	12"	ELM
T53	6"	MAPLE
T54	28"	MALBERRY
T55	10"	CHERRY
T56	18"	LOCUST
T57	30"	LOCUST
T58	30"	LOCUST
T59	12"	MAPLE
T60	10"	MAPLE
T61	40"	CHERRY
T62	40"	MAPLE
T63	14"	MAPLE
T64	18"	LOCUST
T65	10"	LOCUST
T66	18"	LOCUST
T67	30"	LOCUST
T68	12"	MAPLE
T69	12"	MAPLE
T70	22"	TULIP
T71	24"	CHERRY
T72	20"	CHERRY
T73	20"	BIRCH

STUMP LIST		
NO.	DIAMETER	SPECIES
S1	12"	MAPLE
S2	12"	MAPLE
S3	14"	MAPLE
S4	14"	STUMP
S5	10"	STUMP
S6	12"	STUMP
S7	12"	STUMP
S8	12"	STUMP
S9	12"	LOCUST
S10	12"	STUMP
S11	12"	STUMP
S12	12"	STUMP
S13	12"	STUMP
S14	36"	STUMP
S15	12"	MAPLE
S16	20"	MAPLE
S17	10"	MAPLE
S18	10"	MAPLE
S19	10"	MAPLE
S20	10"	MAPLE
S21	10"	MAPLE
S22	10"	MAPLE
S23	10"	MAPLE
S24	20"	LOCUST
S25	36"	STUMP
S26	24"	STUMP
S27	20"	ASH
S28	20"	ASH
S29	20"	ASH
S30	18"	CHERRY
S31	40"	OAK
S32	18"	OAK
S33	14"	STUMP
S34	14"	THIN
S35	36"	ASH
S36	24"	ASH
S37	24"	ASH
S38	20"	MAPLE
S39	20"	STUMP
S40	12"	THIN
S41	12"	MAPLE
S42	30"	STUMP

100 YEAR FLOOD PLAIN AND
 FLOOD MAY INFORMATION
 TAKEN FROM FEMA PANEL
 36087C01894 (ETT. DATE 3/31/2014)

WETLANDS DELINEATED BY
 PETER TORGERSEN 02/24/22

LOT AREA
 A-132837 SQ.
 -3.0496 ACRES

FORMER LOT LINE

BASE FLOOD
 ELEVATION PER
 FEMA PANEL

BASE FLOOD
 ELEVATION PER
 FEMA PANEL

BASE FLOOD
 ELEVATION PER
 FEMA PANEL

BASE FLOOD
 ELEVATION PER
 FEMA PANEL

BASE FLOOD
 ELEVATION PER
 FEMA PANEL

BASE FLOOD
 ELEVATION PER
 FEMA PANEL

BASE FLOOD
 ELEVATION PER
 FEMA PANEL

BASE FLOOD
 ELEVATION PER
 FEMA PANEL

BASE FLOOD
 ELEVATION PER
 FEMA PANEL

BASE FLOOD
 ELEVATION PER
 FEMA PANEL

BASE FLOOD
 ELEVATION PER
 FEMA PANEL

BASE FLOOD
 ELEVATION PER
 FEMA PANEL

BASE FLOOD
 ELEVATION PER
 FEMA PANEL

BASE FLOOD
 ELEVATION PER
 FEMA PANEL

BASE FLOOD
 ELEVATION PER
 FEMA PANEL

BASE FLOOD
 ELEVATION PER
 FEMA PANEL

BASE FLOOD
 ELEVATION PER
 FEMA PANEL

BASE FLOOD
 ELEVATION PER
 FEMA PANEL

BASE FLOOD
 ELEVATION PER
 FEMA PANEL

BASE FLOOD
 ELEVATION PER
 FEMA PANEL

BASE FLOOD
 ELEVATION PER
 FEMA PANEL

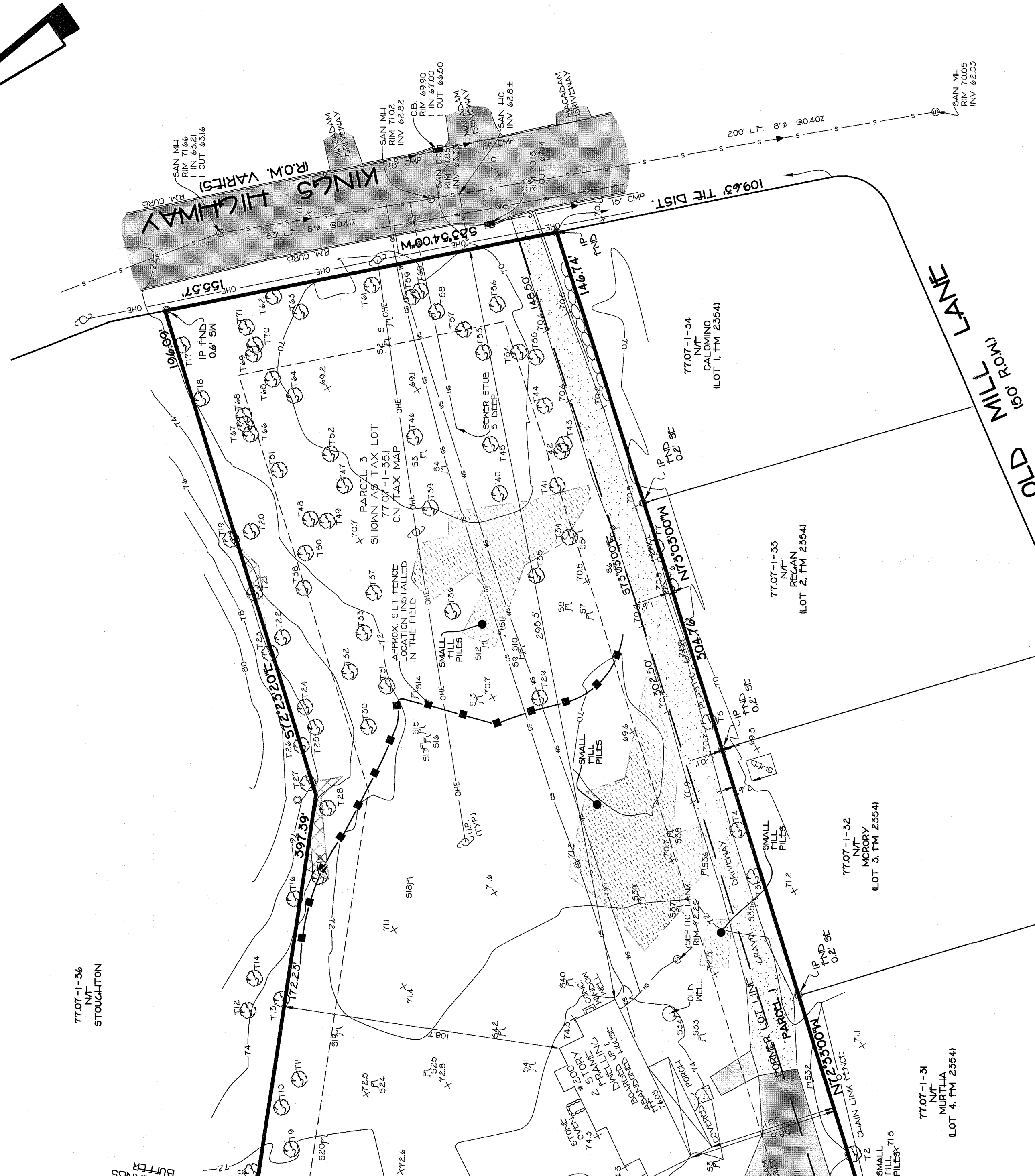
BASE FLOOD
 ELEVATION PER
 FEMA PANEL

BASE FLOOD
 ELEVATION PER
 FEMA PANEL

BASE FLOOD
 ELEVATION PER
 FEMA PANEL

BASE FLOOD
 ELEVATION PER
 FEMA PANEL

BASE FLOOD
 ELEVATION PER
 FEMA PANEL



EXISTING CONDITION PLAN SHEET 5 OF 5
 FOR
200 KING'S HIGHWAY
 LOCATED IN
 TOWN OF ORANGETOWN
 ROCKLAND COUNTY, NEW YORK
 REV. PER COMMENTS - 03/14/2022
 REV. ADJUSTED ELEVATIONS - 03/10/2022
 REV. STUMP LIST LOCATIONS - 02/22/2022
 REV. STUMP LIST LOCATIONS - 12/02/2021
 REV. PER COMMENTS - 12/14/2021

UNAUTHORIZED ALTERATION OR ADDITION TO THIS
 PLAN IS A VIOLATION OF SECTION 1709(2) OF THE
 ENVIRONMENTAL CONSERVATION LAW.
 ANY WORK DONE IN ACCORDANCE WITH THIS
 MAP NOT BEING DONE IN ACCORDANCE WITH THE
 ENGINEER'S SIGNATURE AND SEAL.
 CERTIFICATION OF THE ENGINEER IS LIMITED TO
 THE WORK SHOWN ON THIS PLAN. THE ENGINEER
 DOES NOT GUARANTEE THE ACCURACY OF THE
 INFORMATION PROVIDED BY THE CLIENT OR THE
 PLANNING BOARD. THE ENGINEER'S OFFICE IS AN
 EQUAL OPPORTUNITY FIRM.
 GEORGE D. LANZBERG, P.E. #10009110



SPARACO & YOUNGBLOOD, PLLC
 CIVIL ENGINEERING & LAND SURVEYING
 SITE PLANNING
 18 NORTH MAIN STREET
 HARRISBURG, NY 13343
 TEL. (845) 782-8843
 FAX. (845) 782-8844
 WWW.SPACOSURVEYS.COM

YB-6621
 FILE #
 DATE
 AUG. 5, 2021
 SCALE
 1" = 30'

YB-6621

