

© 2022 DCAK-MSA ARCHITECTURE AND ENGINEERING. ALL RIGHTS RESERVED. THIS DOCUMENT IS THE PROPERTY OF DCAK-MSA ARCHITECTURE AND ENGINEERING. NO PART OF THIS DOCUMENT SHALL BE REPRODUCED OR TRANSMITTED IN ANY FORM OR BY ANY MEANS, ELECTRONIC OR MECHANICAL, INCLUDING PHOTOCOPYING, RECORDING, OR BY ANY INFORMATION STORAGE AND RETRIEVAL SYSTEM, WITHOUT THE WRITTEN PERMISSION OF DCAK-MSA ARCHITECTURE AND ENGINEERING. THE DESIGN AND CONSTRUCTION OF THE PROJECT SHALL BE IN ACCORDANCE WITH THE ORIGINAL SET AND ORIGINAL SPECIFICATIONS. SEE REFERENCE.

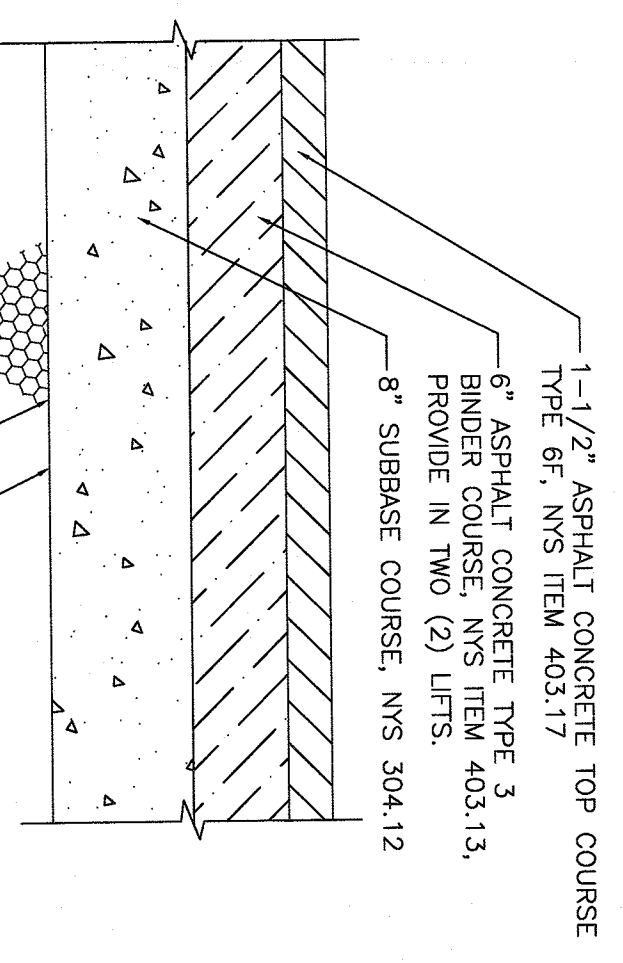
Project Name:
Asahi Depository

Project Address:
875 Western Highway
Babwell, NY 10913

Consultants

TYPICAL PARKING LOT PAVEMENT SECTION FOR TRUCK TRAFFIC

N.T.S.

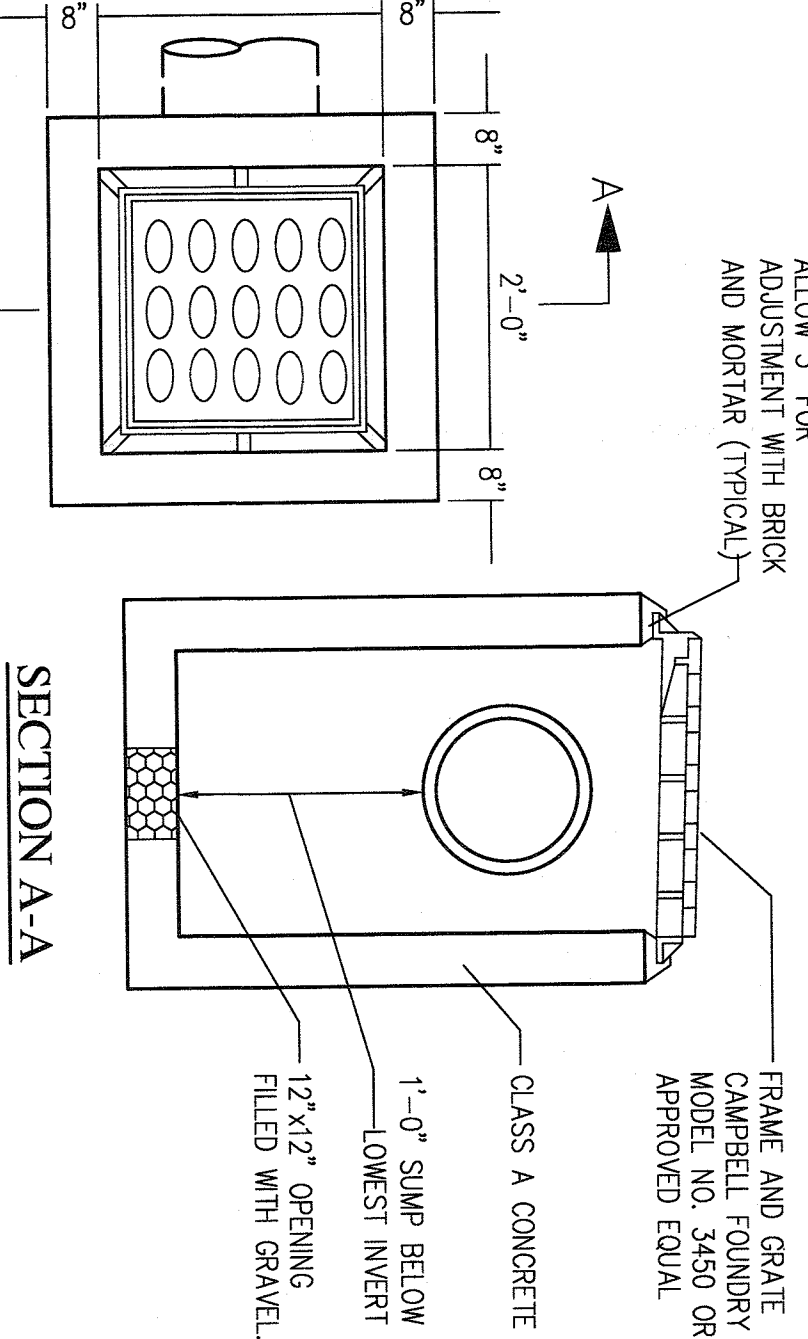


SECTION A

EXCAVATION LIMIT
REMOVE UNSUITABLE MATERIAL AS APPROVED OR ORDERED BY ENGINEER

TYPICAL PARKING LOT PAVEMENT SECTION FOR TRUCK TRAFFIC

N.T.S.



PLAN CATCH BASIN

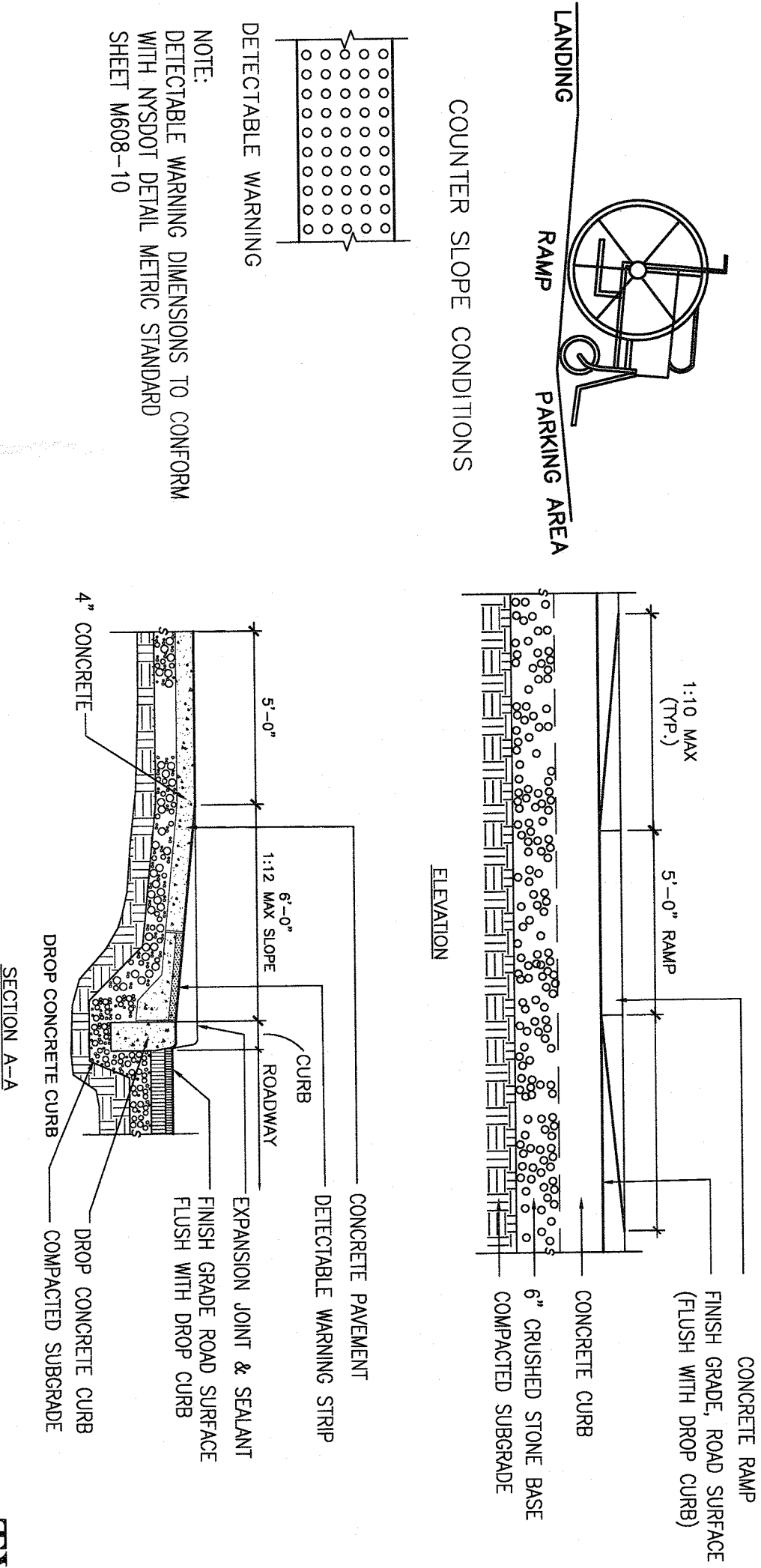
N.T.S.

SECTION A-A

FRAME AND GATE ADJUSTMENT WITH BRICK AND MORTAR (TYPICAL)
ALLOW 3\"/>

ACCESSIBLE RAMP AND DETECTABLE WARNING DETAIL & SECTION

N.T.S.

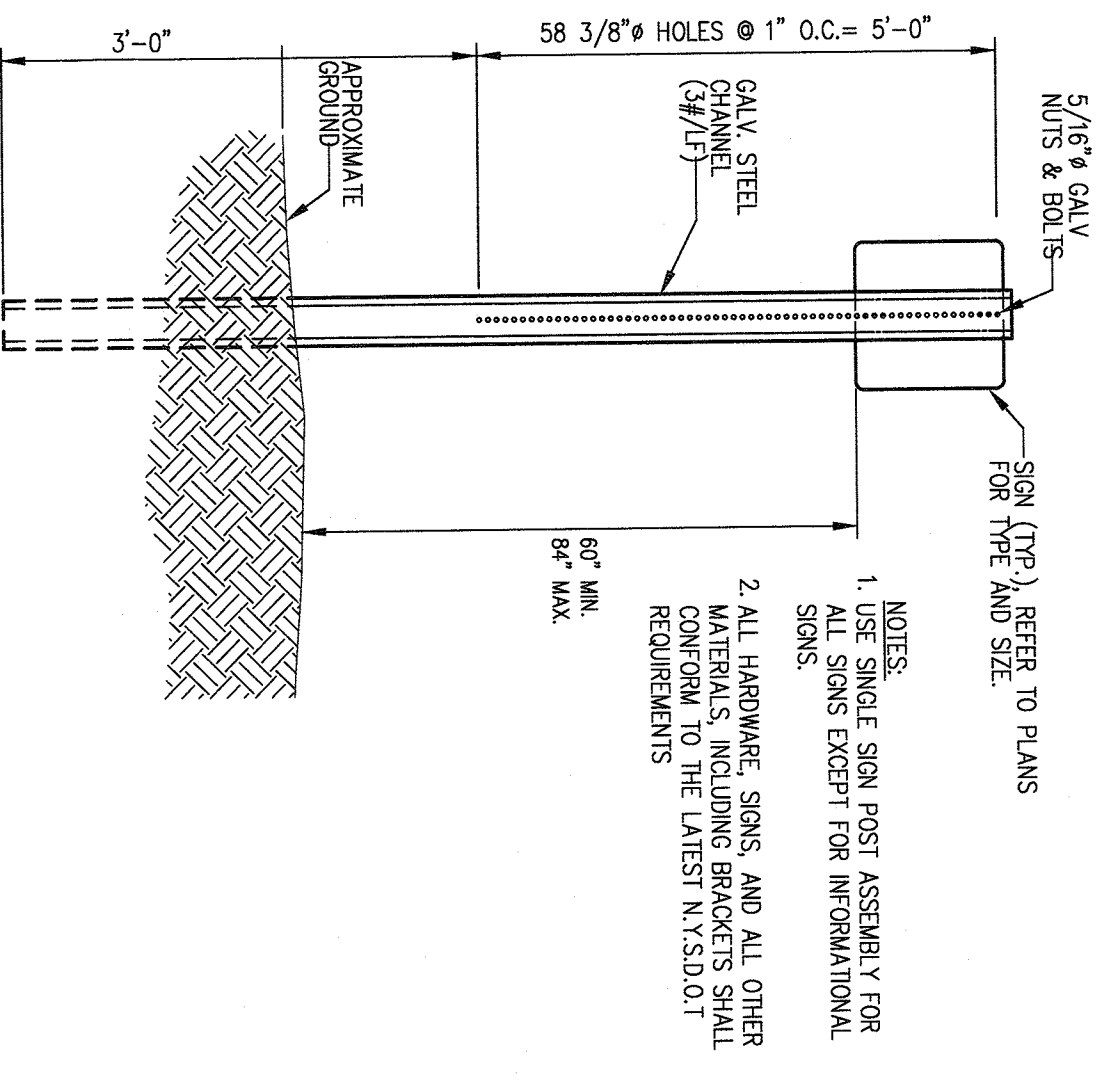


SECTION A-A

CONCRETE RAMP (FINISH GRADE, ROAD SURFACE) FLUSH WITH DROP CURB
CONCRETE CURB
6\"/>

SIGN ASSEMBLY DETAILS

N.T.S.

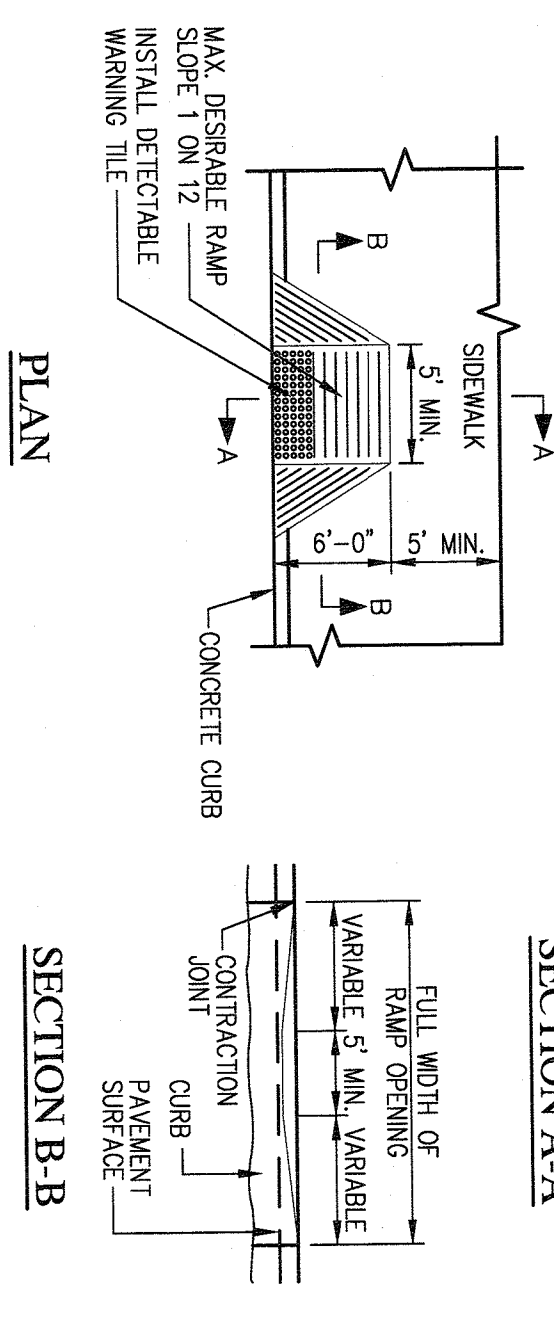


SECTION A-A

NOTES:
1. USE SINGLE SIGN POST ASSEMBLY FOR ALL SIGNS EXCEPT FOR INFORMATIONAL SIGNS.
2. ALL WARNING SIGNS AND ALL OTHER MATERIALS, INCLUDING BRACKETS SHALL CONFORM TO THE LATEST NYS DOT REQUIREMENTS

SIDEWALK RAMP DETAILS

N.T.S.

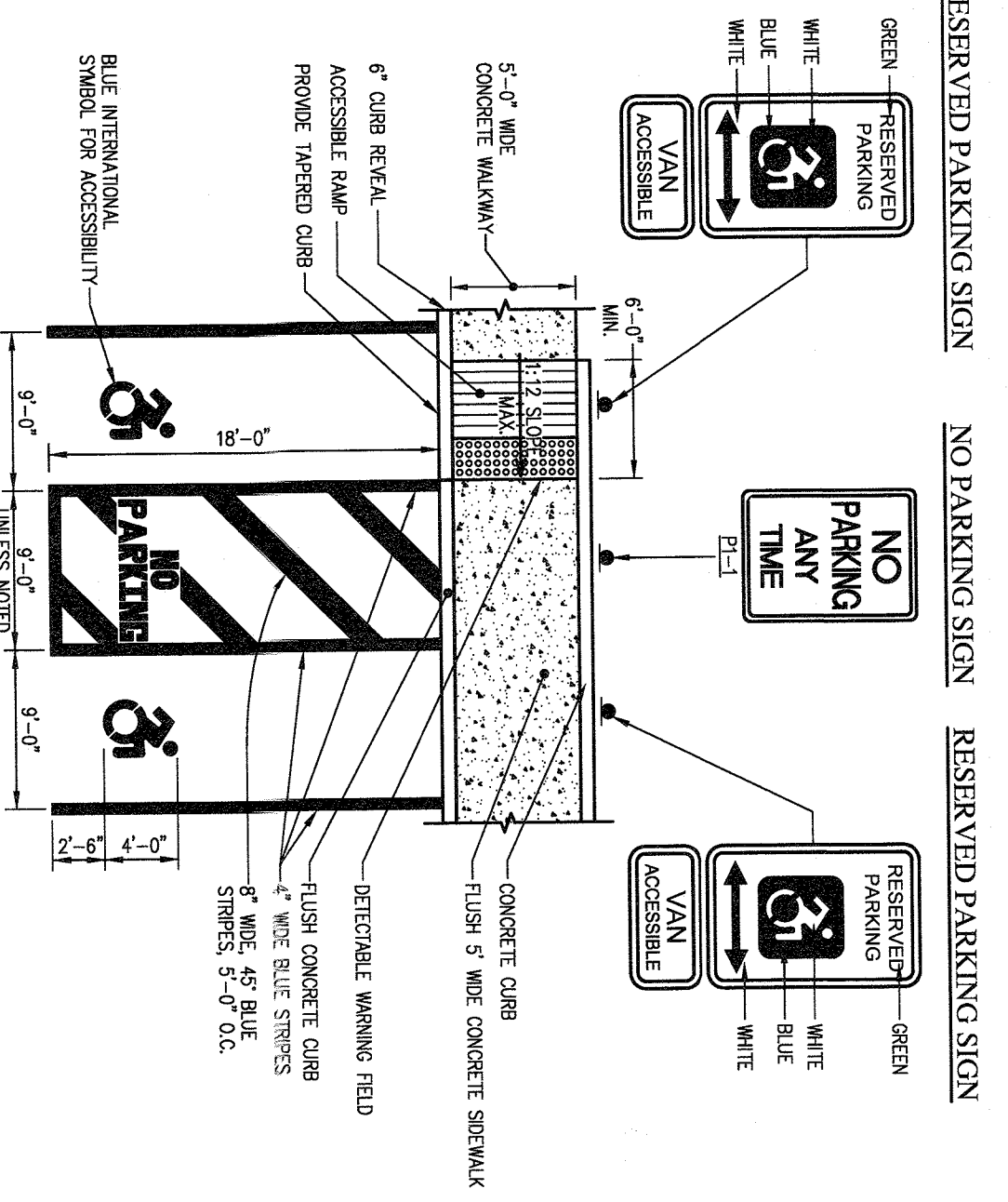


SECTION A-A

CONCRETE RAMP (FINISH GRADE, ROAD SURFACE) FLUSH WITH DROP CURB
CONCRETE CURB
6\"/>

ACCESSIBLE PARKING STALL DETAIL

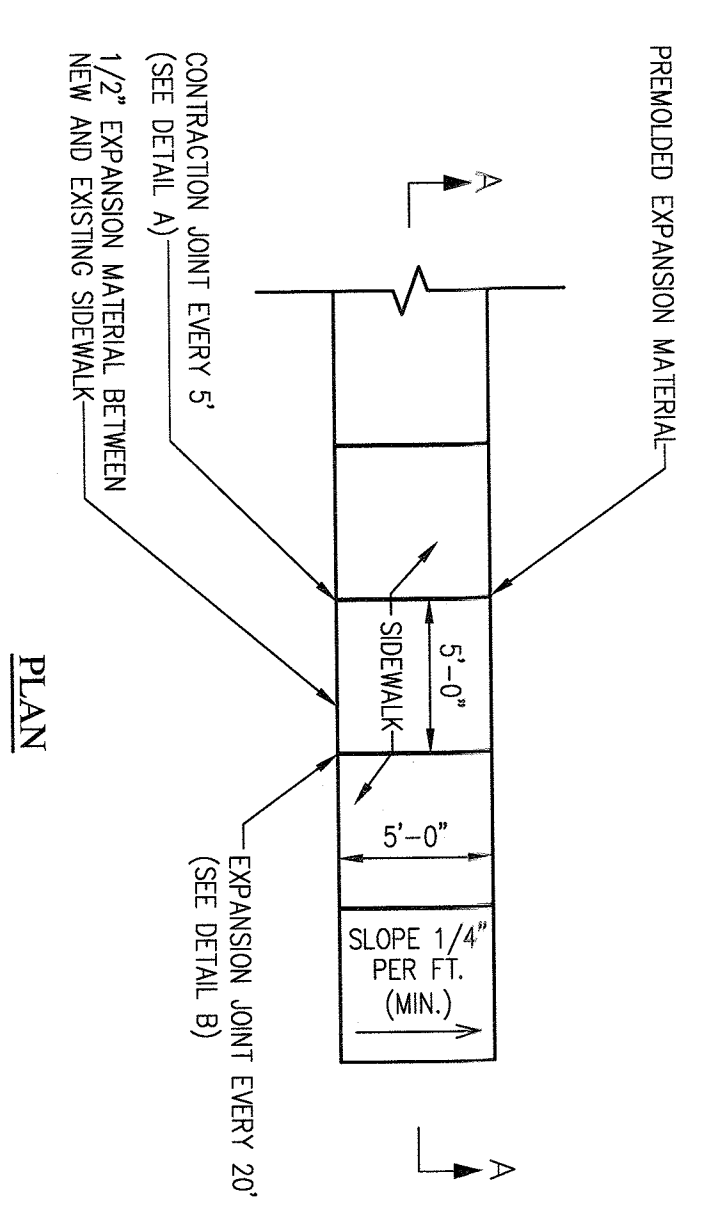
N.T.S.



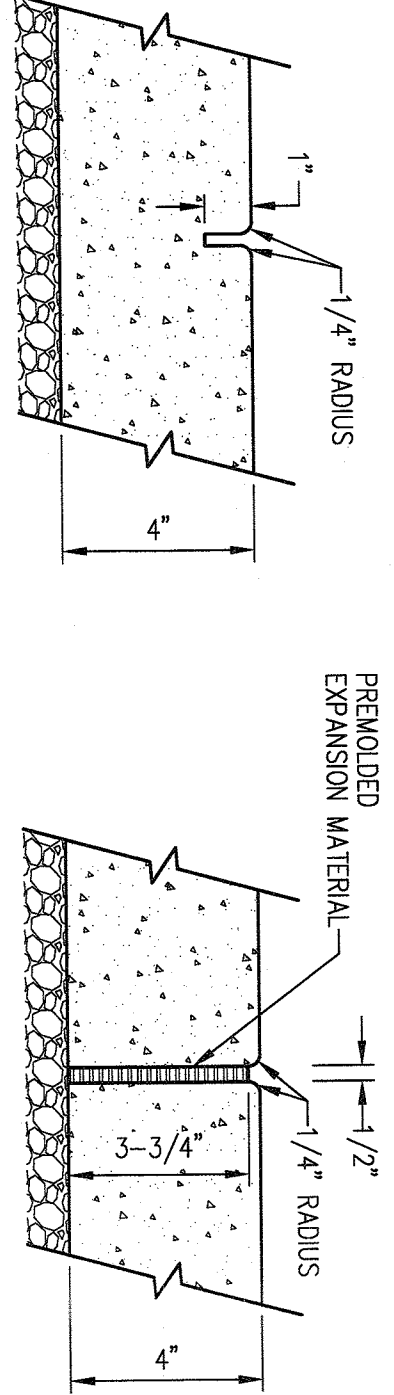
ACCESSIBLE PARKING STALL DETAIL

N.T.S.

- CIVIL NOTES:**
1. MAXIMUM SPACING OF EXPANSION JOINTS TO BE 20 FEET.
 2. DENSITY OF ALL MATERIALS COMPACTED TO 98% MAX. DENSITY PER ASTM D 1557.
 3. ALL HANDICAP RAMPS, PARKING SPACES AND ACCESS ISLES SHALL BE IN COMPLIANCE WITH THE LATEST NEW YORK STATE UNIFORM PREVENTION, BUILDING CODE AND (CC)/ANSI A117.1 STANDARDS. TO BE SAMPLT AS REQUIRED PRIOR TO EXISTING OPERATIONS. 2'-0\"/>
 - 4. EXISTING OPERATIONS. 2'-0\"/>
 - 5. ALL CONCRETE TO BE 4,000 PSI.



PLAN



DETAIL "A" CONTRACTION JOINT

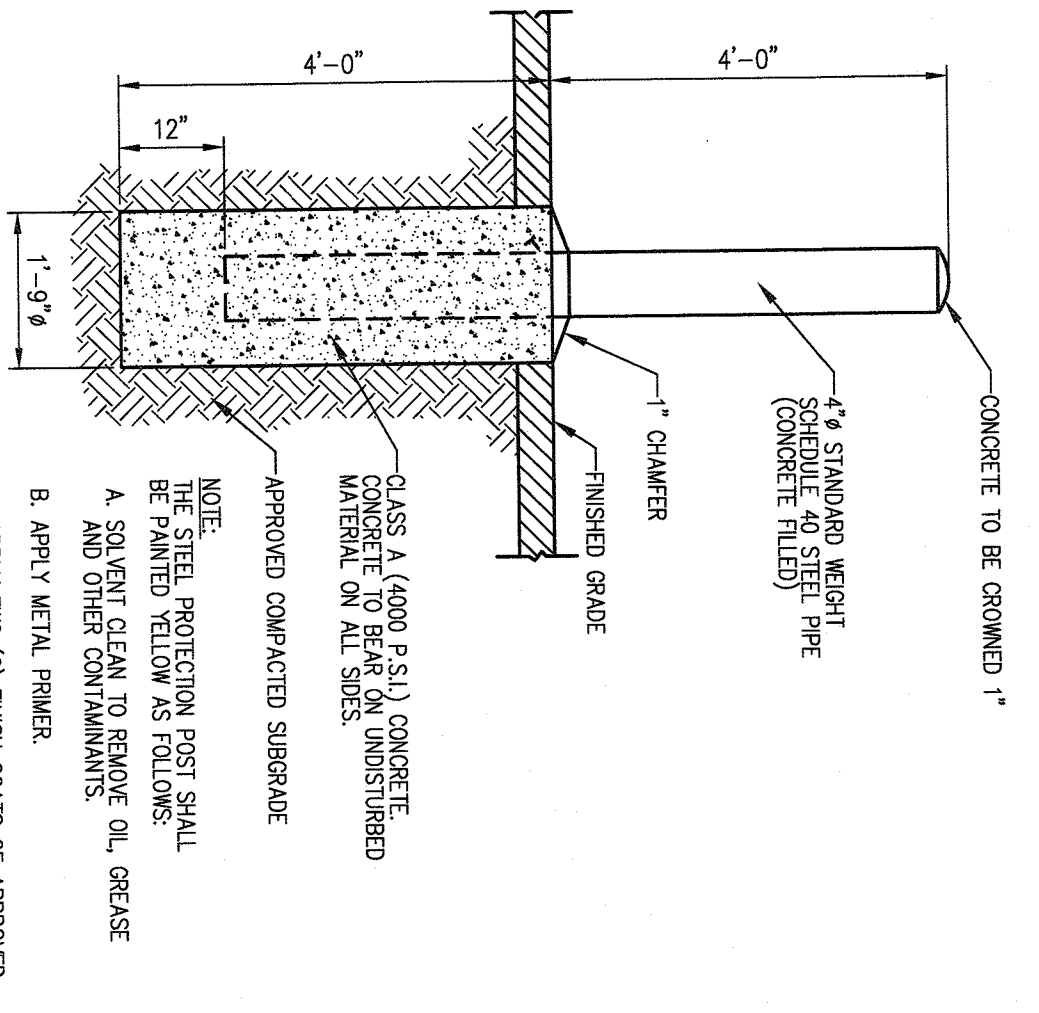
DETAIL "B" EXPANSION JOINT

CONCRETE SIDEWALK DETAILS

N.T.S.

BOLLARD DETAIL

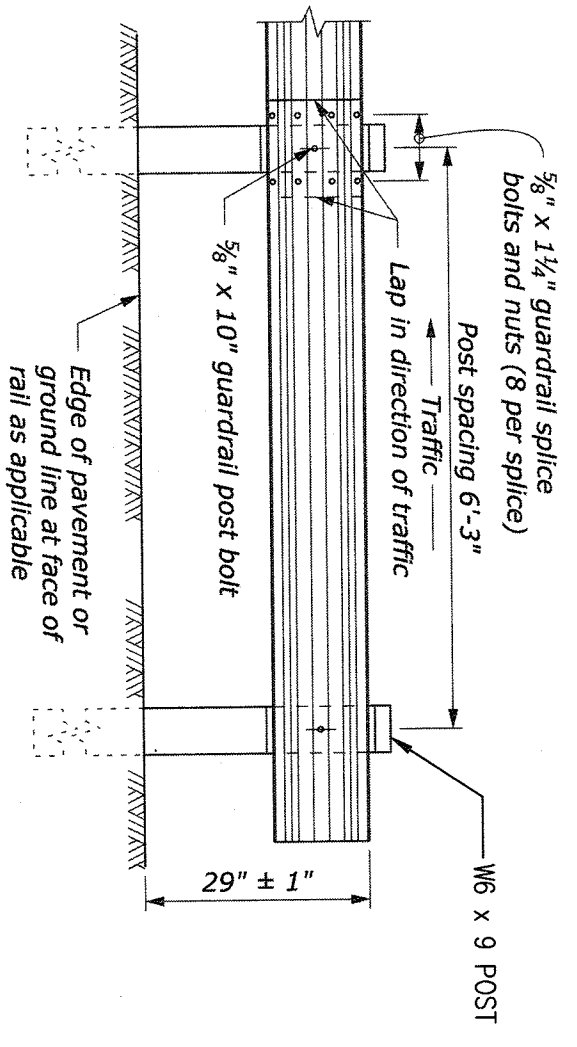
N.T.S.



NOTE:
THE STEEL PROTECTION POST SHALL BE PAINTED YELLOW AS FOLLOWS:
A. SOLVENT CLEAN TO REMOVE OIL, GREASE AND OTHER CONTAMINANTS.
B. APPLY METAL PRIMER.
C. APPLY TWO (2) FINISH COATS OF APPROVED EXTERIOR PAINT FOR METAL SURFACES.

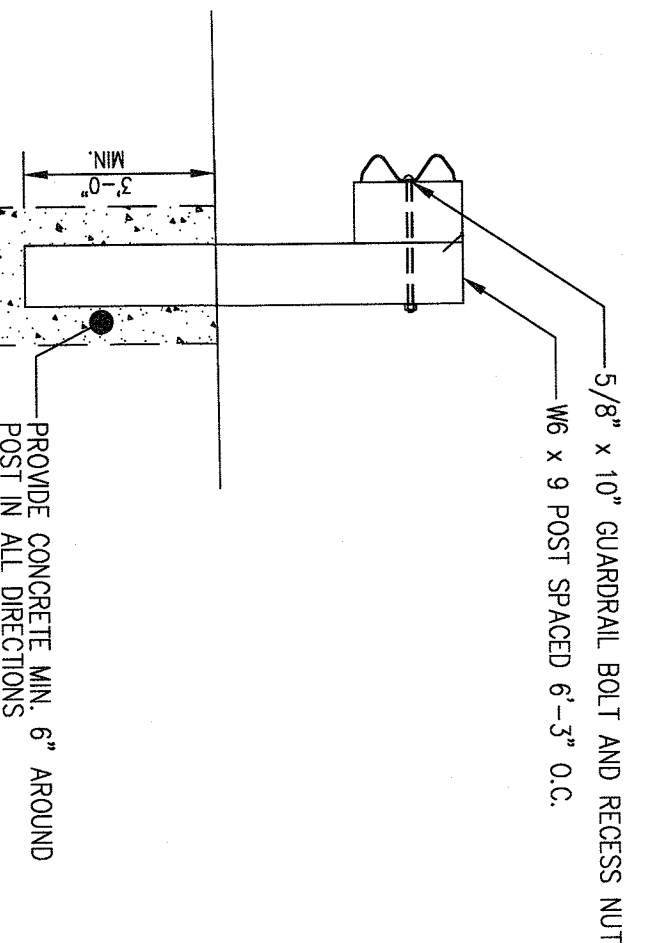
POST SECTION

N.T.S.



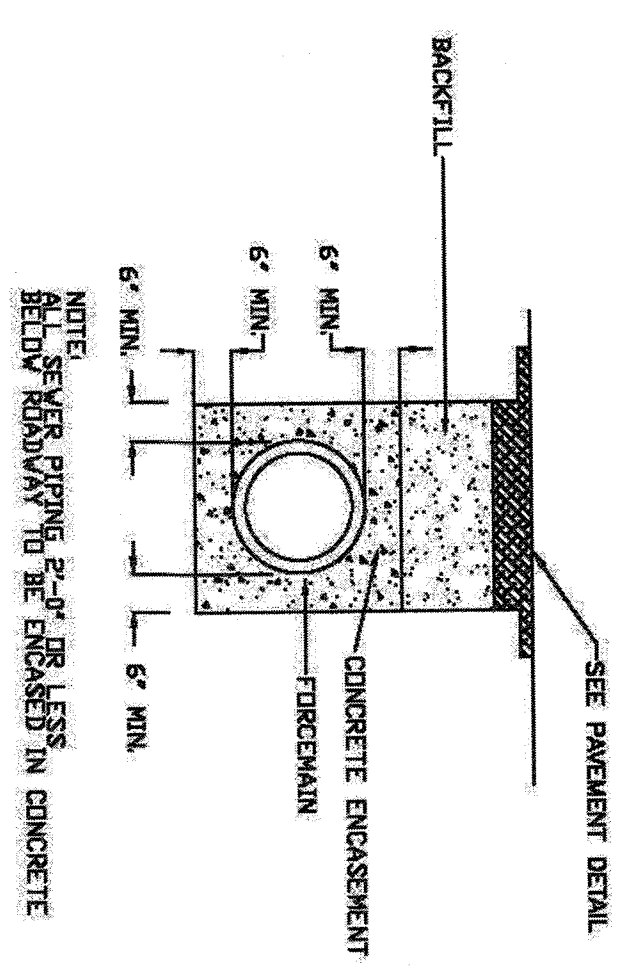
TYPICAL GUARDRAIL CROSS SECTION

N.T.S.



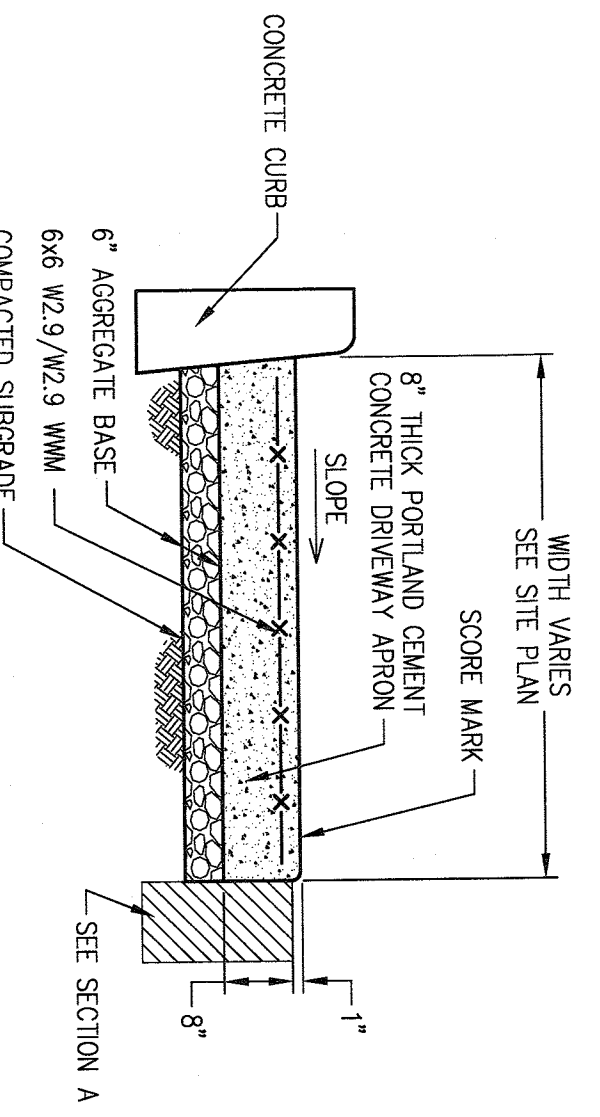
CONCRETE ENCASED PIPE DETAIL

N.T.S.



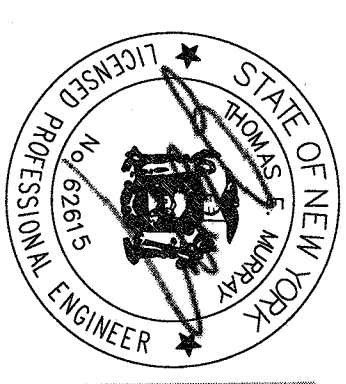
CONCRETE CONTAINER PAD DETAIL

N.T.S.



CIVIL DETAILS

Project Number:	21031	Responsible Party:	JS	Reviewed By:	DC
Scale:	AS NOTED				
Drawing Number:	C-400				



No.	Date	Description	Responsible Party
-	03/28/22	FOR PERMITS	YAM
-	05/16/22	DETAILS	YAM
-	06/13/22	FOR PB	YAM

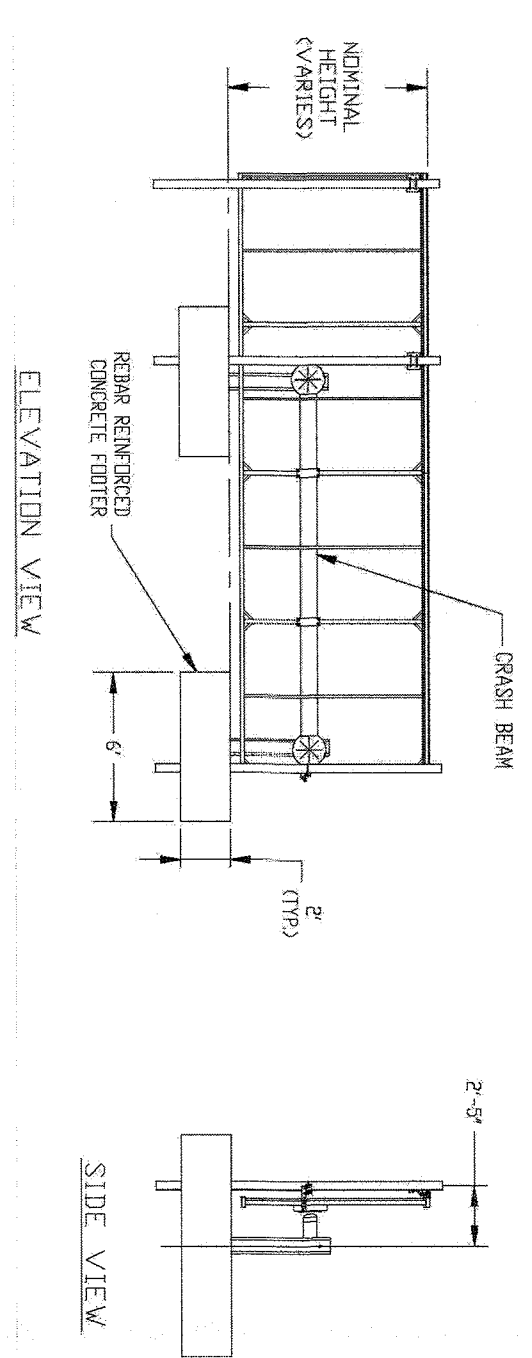
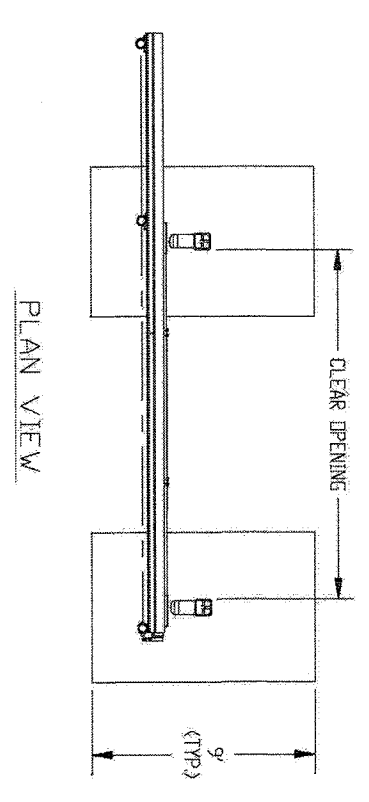
C-400

Operation

The model TCG-4 gate assembly includes two transfer stations, crash beam, and an aluminum gate panel with integrated track, truck assemblies and hardware. Tymetal can also supply optional gate mounting posts, operator control panels and safety devices as required. The TCG-4 is available with multiple infills in clear openings up to 30 feet, and heights as required.

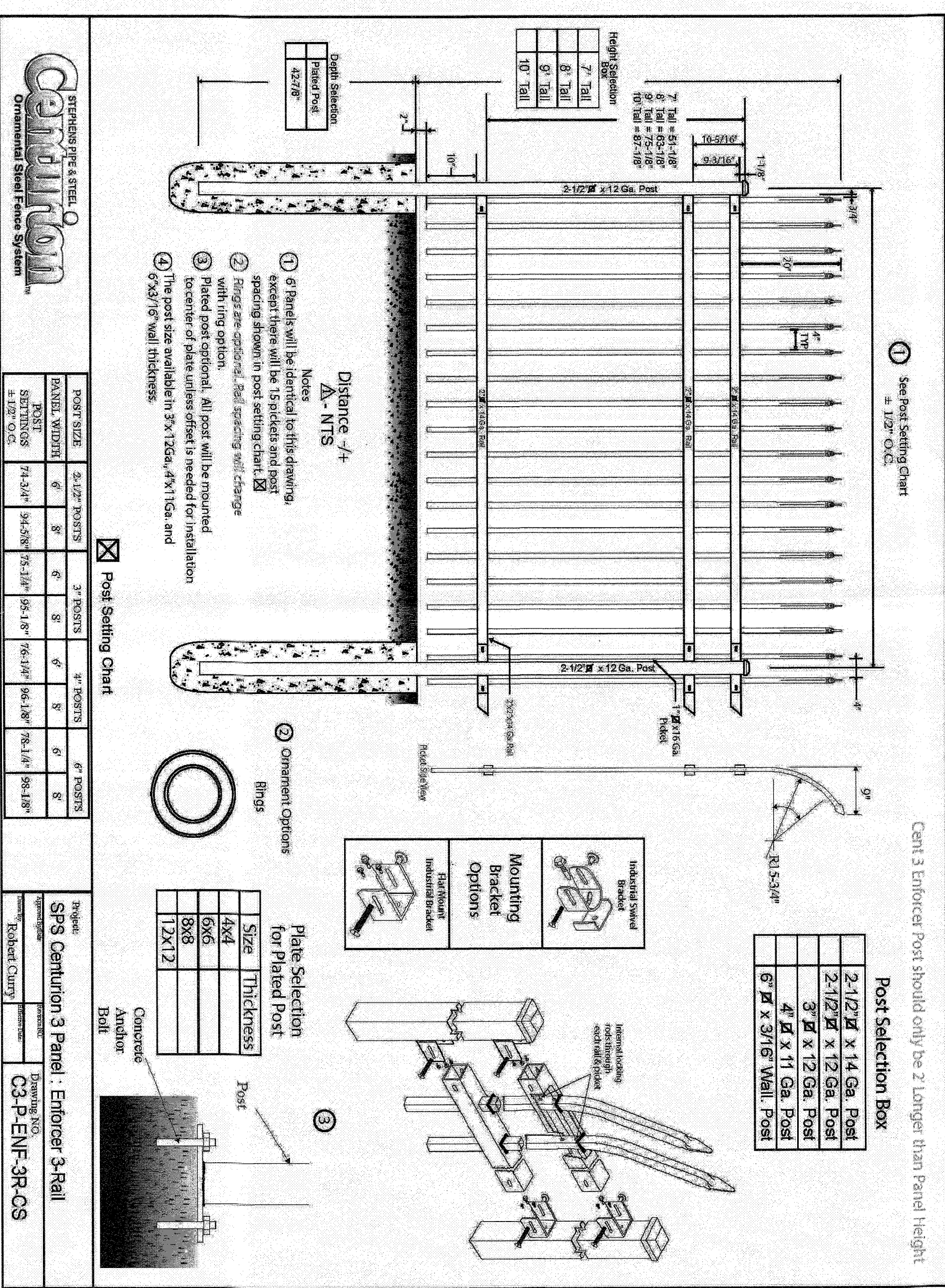
Product Information

- ASTM certified (ASTM F2856-07 M30 P1)
- Clear Openings: up to 30'
- Multiple Infill Options
- Customizable operating parameters
- 208-240 single and three phase
- Manual, Hydraulic, or Mechanical operation



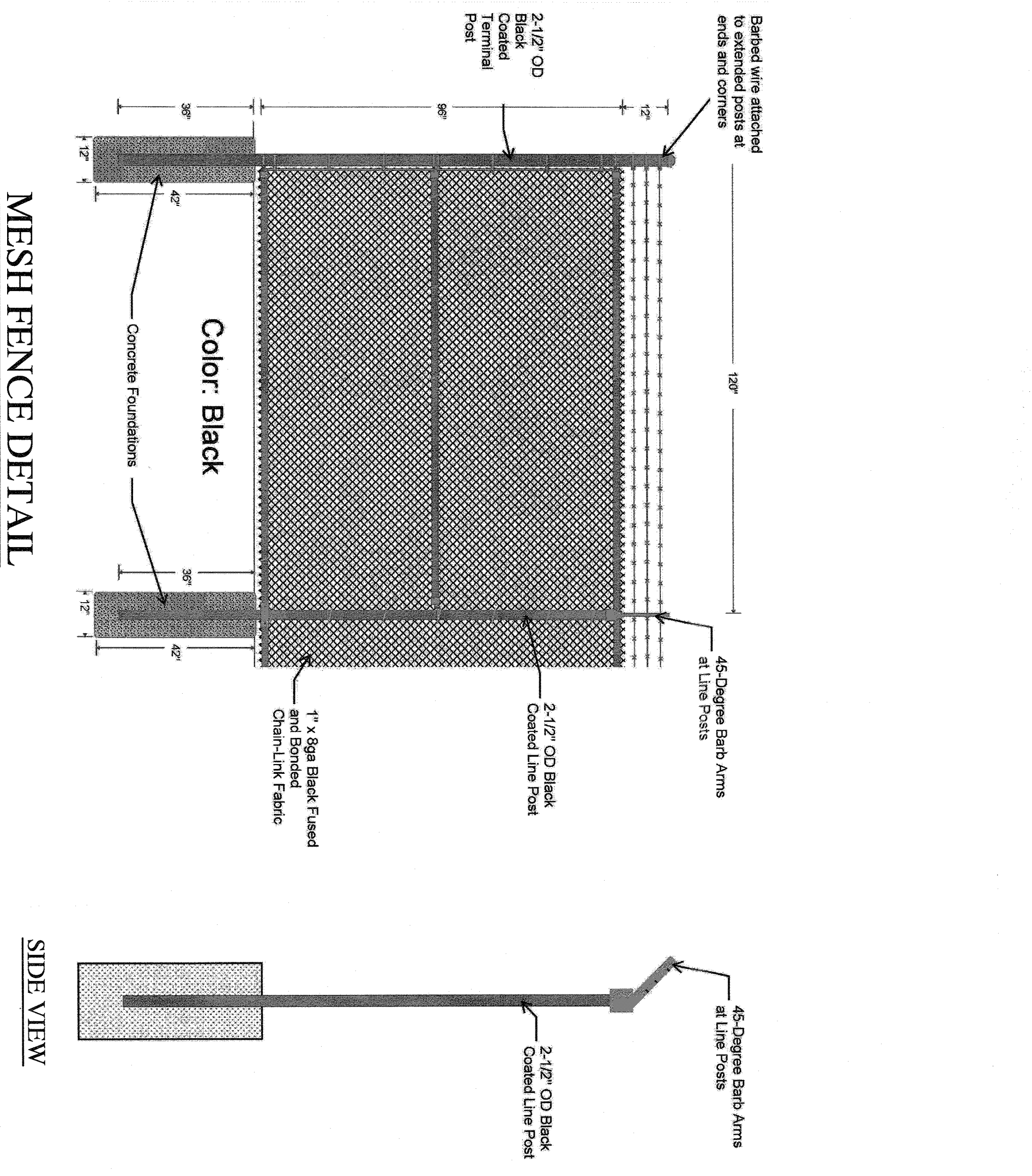
800-328-GATE (4283)
675 Wilbur Avenue, Greenwich, NY 12834
4301 Dixie Fern Rd, Peasland, TX 77561

PERIMETER SLIDING GATE PLAN
N.T.S.

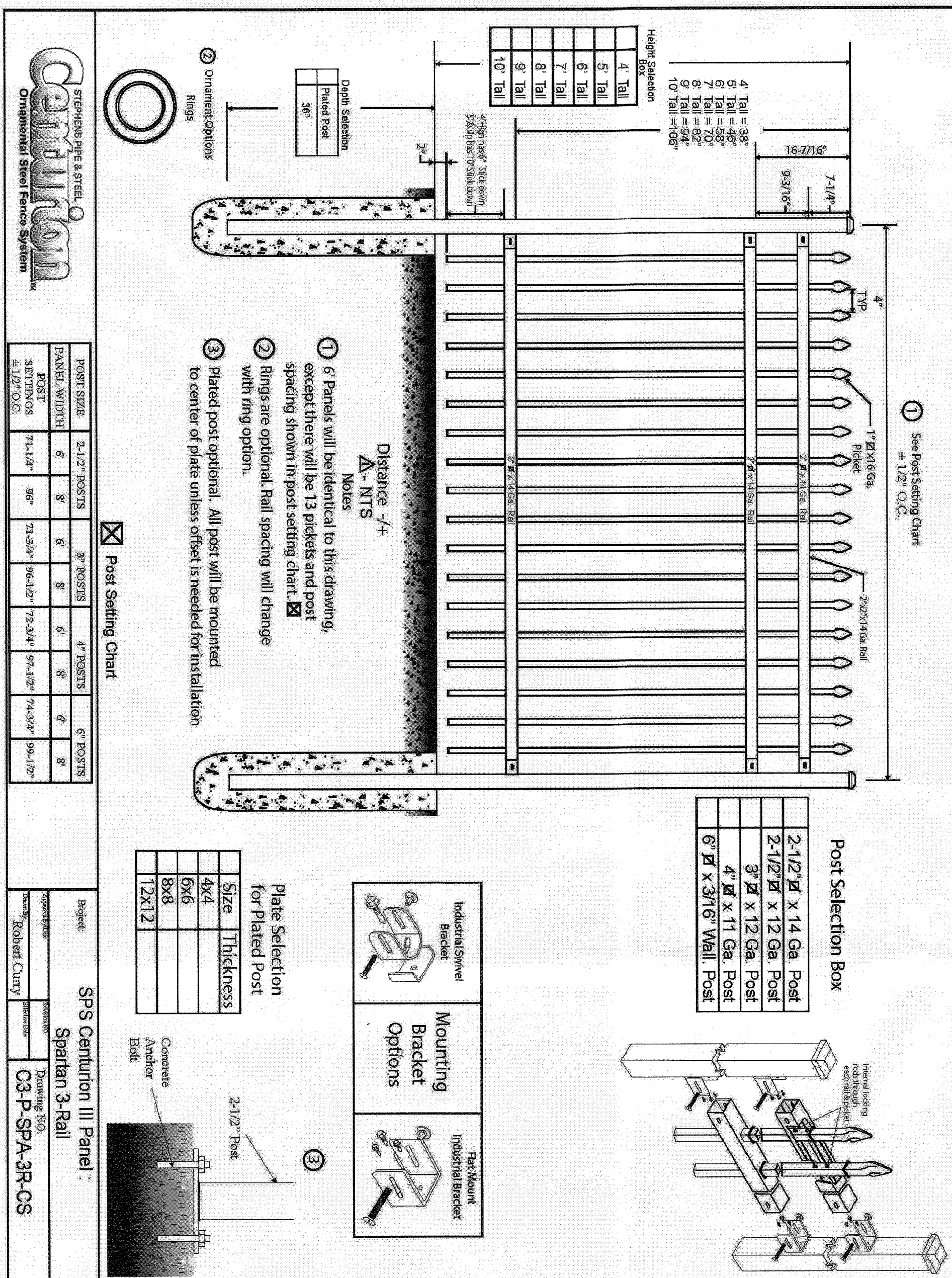


RAIL FENCE DETAIL
N.T.S.

COLOR: BLACK



MESH FENCE DETAIL
N.T.S.



PERIMETER SLIDING GATE RAIL DETAIL
N.T.S.

COLOR: BLACK

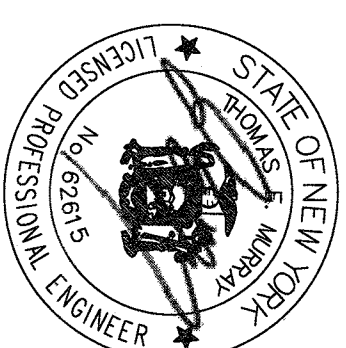
53 HUDSON AVENUE
NYACK, NEW YORK 10960
www.DCAK-MSA.com
Email: info@DCAK-MSA.com
Tel: 845-353-1300 Fax: 845-353-1614

© 2007 DCAK-MSA ARCHITECTURE AND ENGINEERING SERVICES. ALL RIGHTS RESERVED. THIS DOCUMENT IS THE PROPERTY OF DCAK-MSA ARCHITECTURE AND ENGINEERING. NO PART OF THIS DOCUMENT IS TO BE REPRODUCED OR TRANSMITTED IN ANY FORM OR BY ANY MEANS, ELECTRONIC OR MECHANICAL, INCLUDING PHOTOCOPYING, RECORDING, OR BY ANY INFORMATION STORAGE AND RETRIEVAL SYSTEM, WITHOUT PERMISSION IN WRITING FROM DCAK-MSA ARCHITECTURE AND ENGINEERING. ANY UNAUTHORIZED REPRODUCTION OR TRANSMISSION OF THIS DOCUMENT IS STRICTLY PROHIBITED. THE ORIGINAL SCALE AND ORIGINAL SIGNATURE ARE REQUIRED.

Project Name:
Asahi Depository

Project Address:
875 Western Highway
Blauvelt, NY 10913

Consultants



REVISIONS		
No.	Date	Description
1	03/28/22	FOR PERMITS

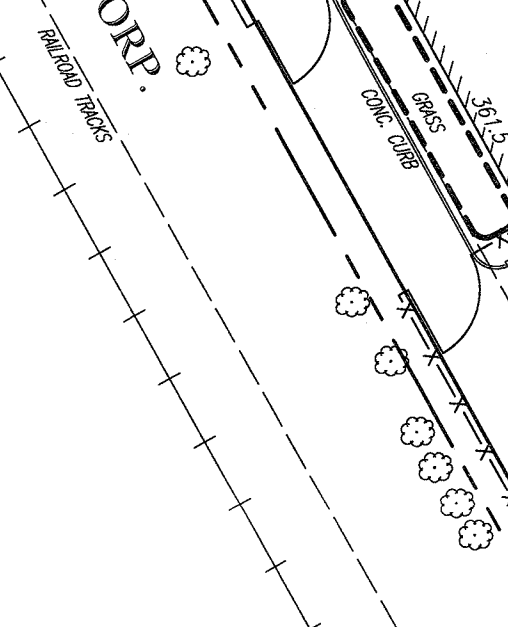
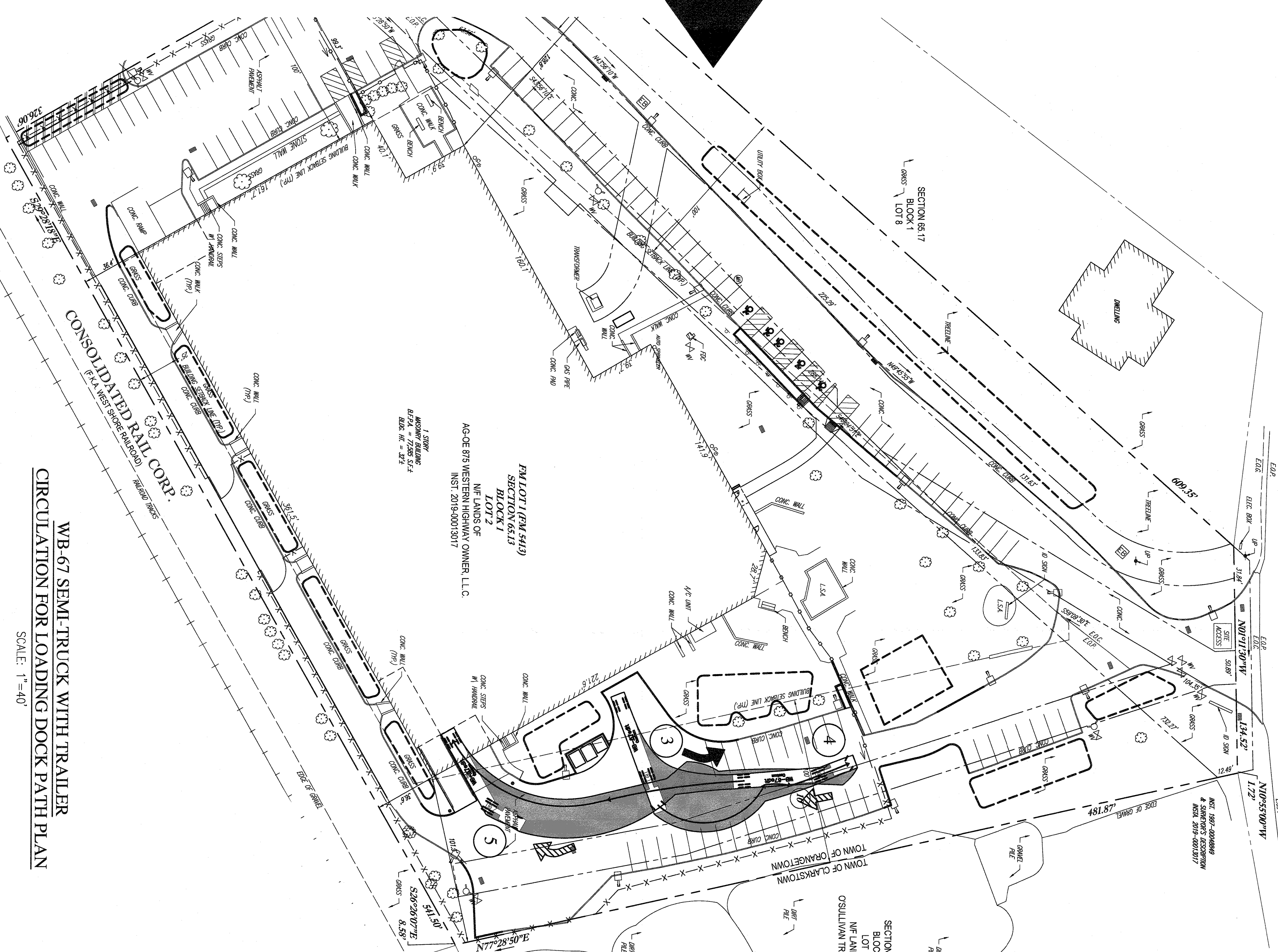
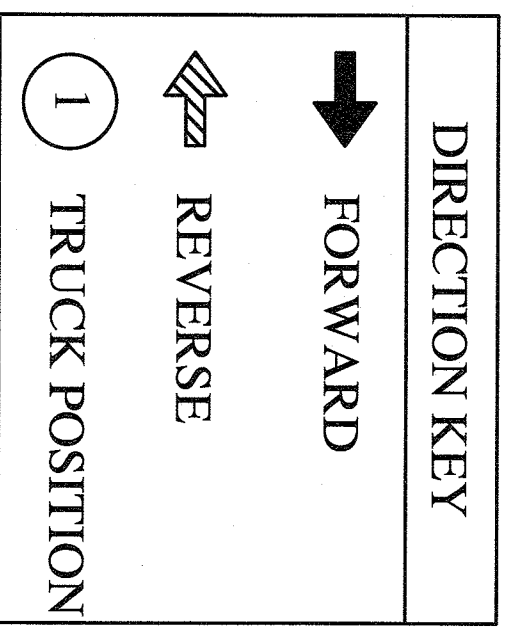
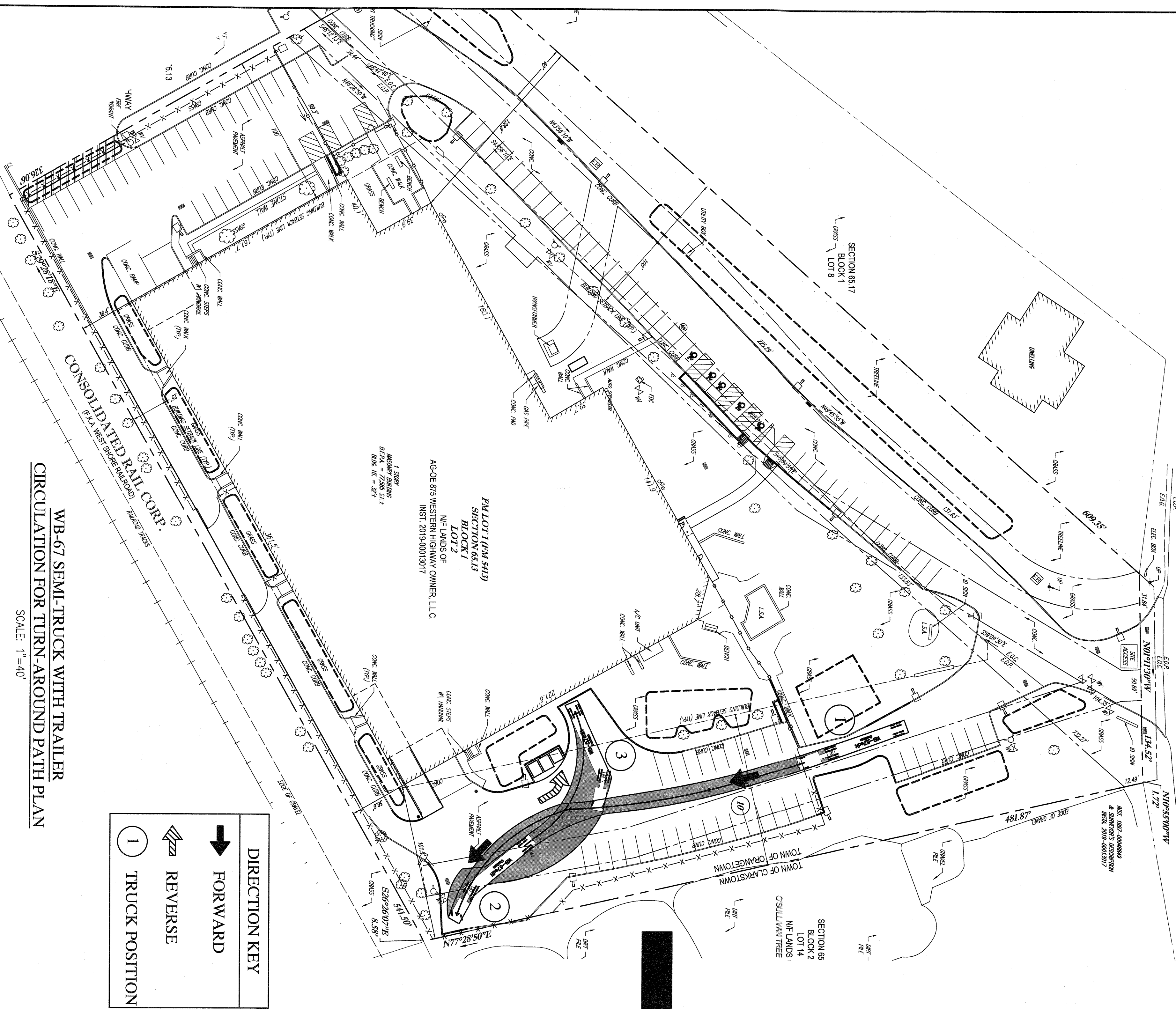
CIVIL DETAILS

Project Number: Responsible Party: Reviewed By:
21031 JS DC

C-401

WESTERN HIGHWAY
 (A.K.A. COUNTY HIGHWAY ROUTE 15)
 (VARIABLE WIDTH PUBLIC RIGHT OF WAY)
 (ASPHALT ROADWAY)
 (TWO WAY TRAFFIC)

WESTERN HIGHWAY
 (A.K.A. COUNTY HIGHWAY ROUTE 15)
 (VARIABLE WIDTH PUBLIC RIGHT OF WAY)
 (ASPHALT ROADWAY)
 (TWO WAY TRAFFIC)



DCAK · MSA
 ARCHITECTURE AND ENGINEERING

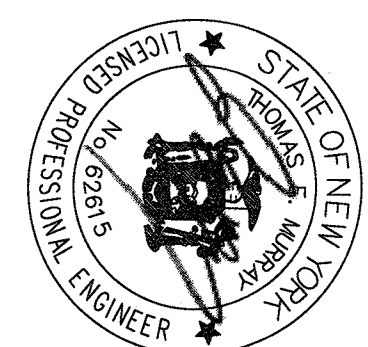
53 HUDSON AVENUE
 NYACK, NEW YORK 10960
 www.dcakmsa.com
 Email: info@dcakmsa.com
 Tel: 845-353-1300 Fax: 845-353-1614

©2015 DC&A, ARCHITECTURE AND ENGINEERING. ALL RIGHTS RESERVED. THIS DOCUMENT IS THE PROPERTY OF DC&A, ARCHITECTURE AND ENGINEERING. IT IS TO BE USED ONLY FOR THE PROJECT AND SITE SPECIFICALLY IDENTIFIED HEREIN. ANY REPRODUCTION OR TRANSMISSION OF THIS DOCUMENT IN ANY FORM OR BY ANY MEANS, WITHOUT THE WRITTEN PERMISSION OF DC&A, ARCHITECTURE AND ENGINEERING, IS STRICTLY PROHIBITED. THE ORIGINAL SEAL AND ORIGINAL SIGNATURE ARE ATTACHED.

Project Name:
 Asahi Depository

Project Address:
 875 Western Highway
 Blauvelt, NY 10913

Consultants



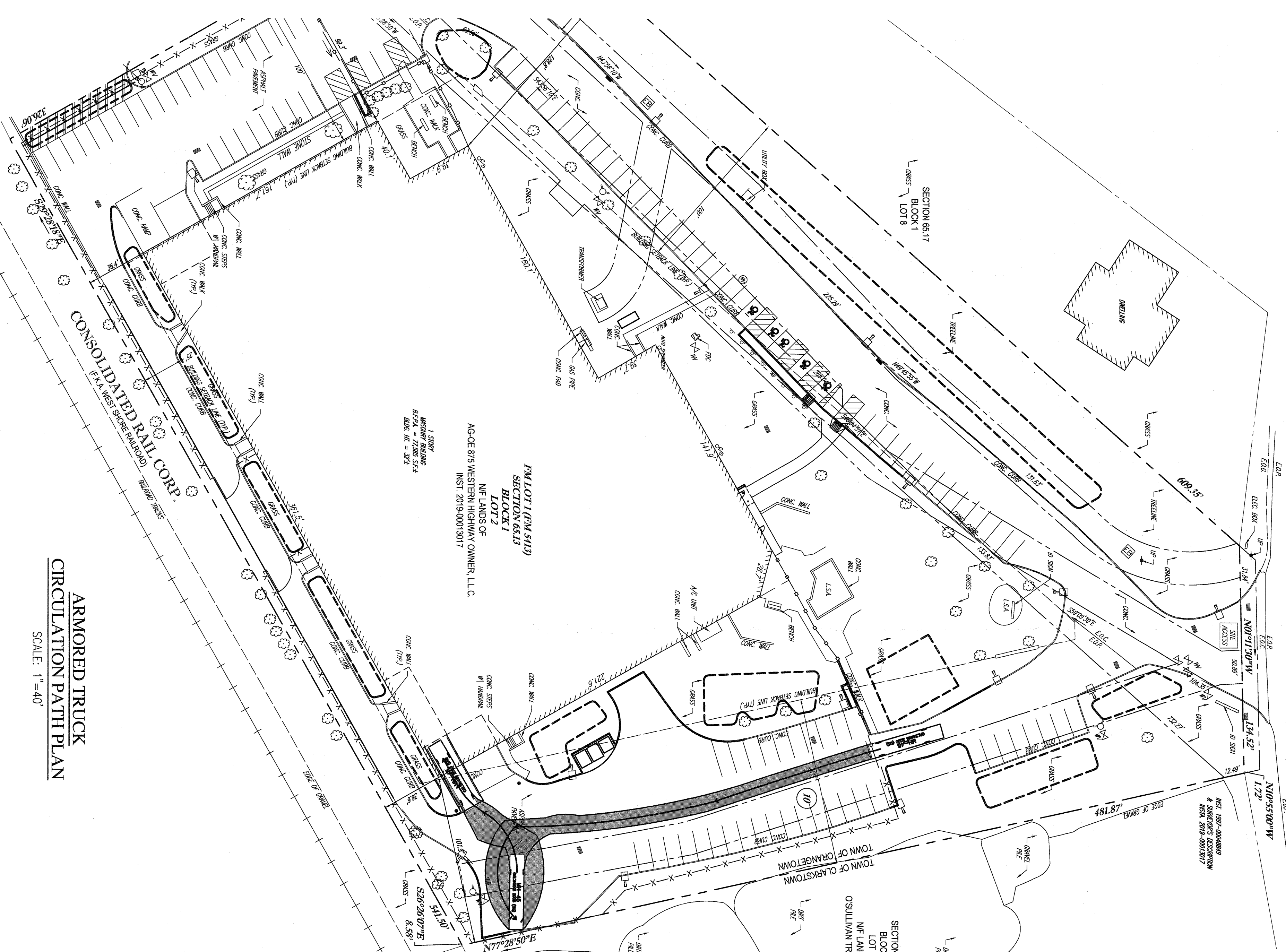
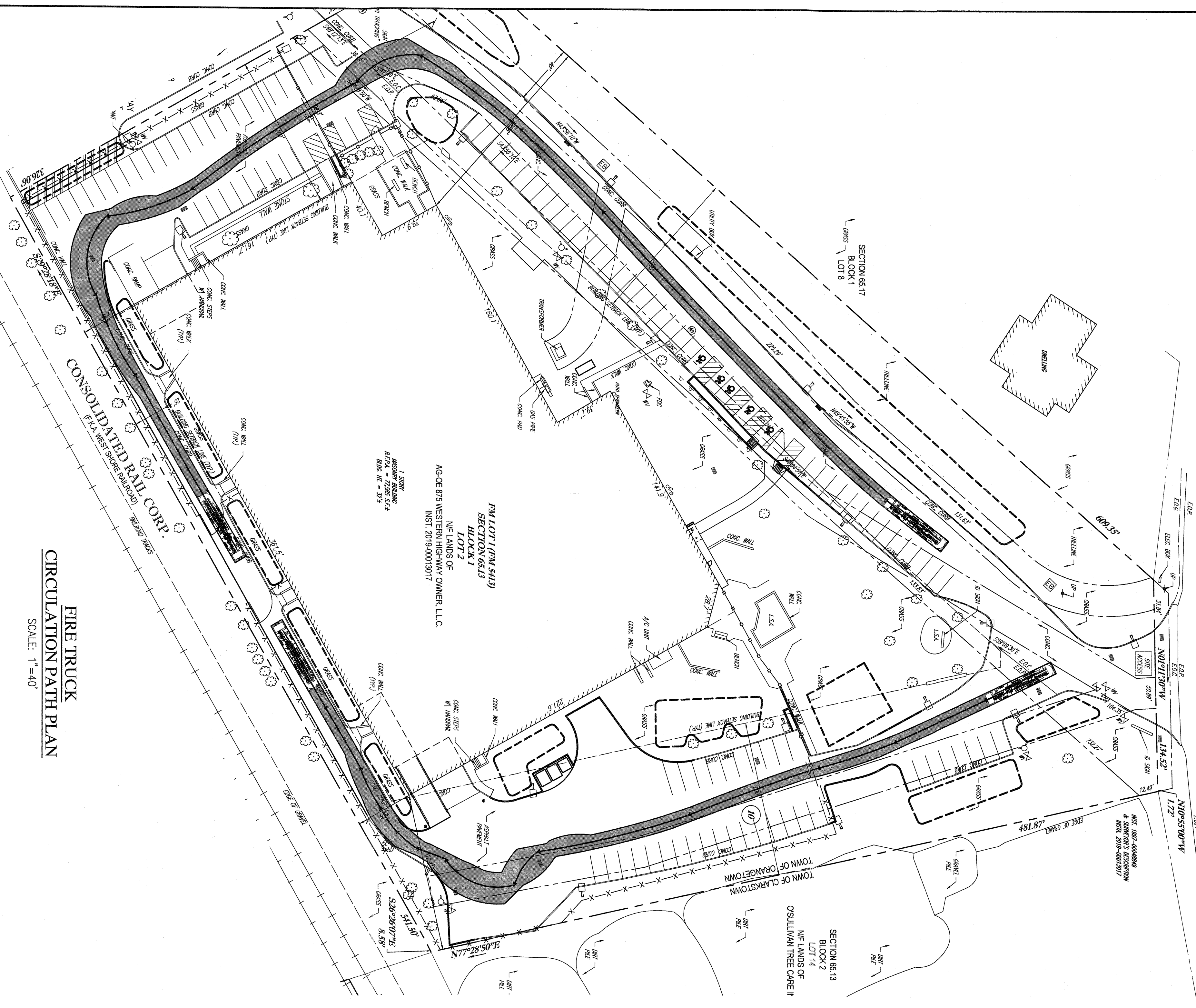
REVISIONS			
No.	Date	Description	Responsible Party
-	03/28/22	FOR PERMITS	YM

Drawing:
VEHICULAR CIRCULATION PATH
WB-67 SEMI-TRUCK WITH TRAILER

Project Number: 21031 Responsible Party: JS Reviewed By: DC
 Scale: AS NOTED
 Drawing Number: C-500

WESTERN HIGHWAY
 (A.K.A. COUNTY HIGHWAY ROUTE 15)
 (VARIABLE WIDTH PUBLIC RIGHT OF WAY)
 (ASPHALT ROADWAY)
 (TWO WAY TRAFFIC)

WESTERN HIGHWAY
 (A.K.A. COUNTY HIGHWAY ROUTE 15)
 (VARIABLE WIDTH PUBLIC RIGHT OF WAY)
 (ASPHALT ROADWAY)
 (TWO WAY TRAFFIC)

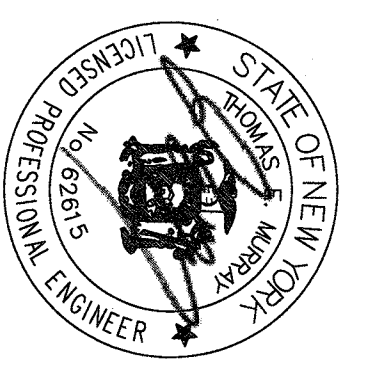


DCAK - MSA
 ARCHITECTURE AND ENGINEERING
 53 HUDSON AVENUE
 NYACK, NEW YORK 10960
 WWW.DCAK-MSA.COM
 EMAIL: INFO@DCAK-MSA.COM
 TEL: 845-353-1300 FAX: 845-353-1614

Project Name:
Asahi Depository
 Project Address:
 875 Western Highway
 Blauvelt, NY 10913
 Consultants

Scale:

REVISIONS			
No.	Date	Description	Responsible
-	03/28/22	FOR PERMITS	YJM

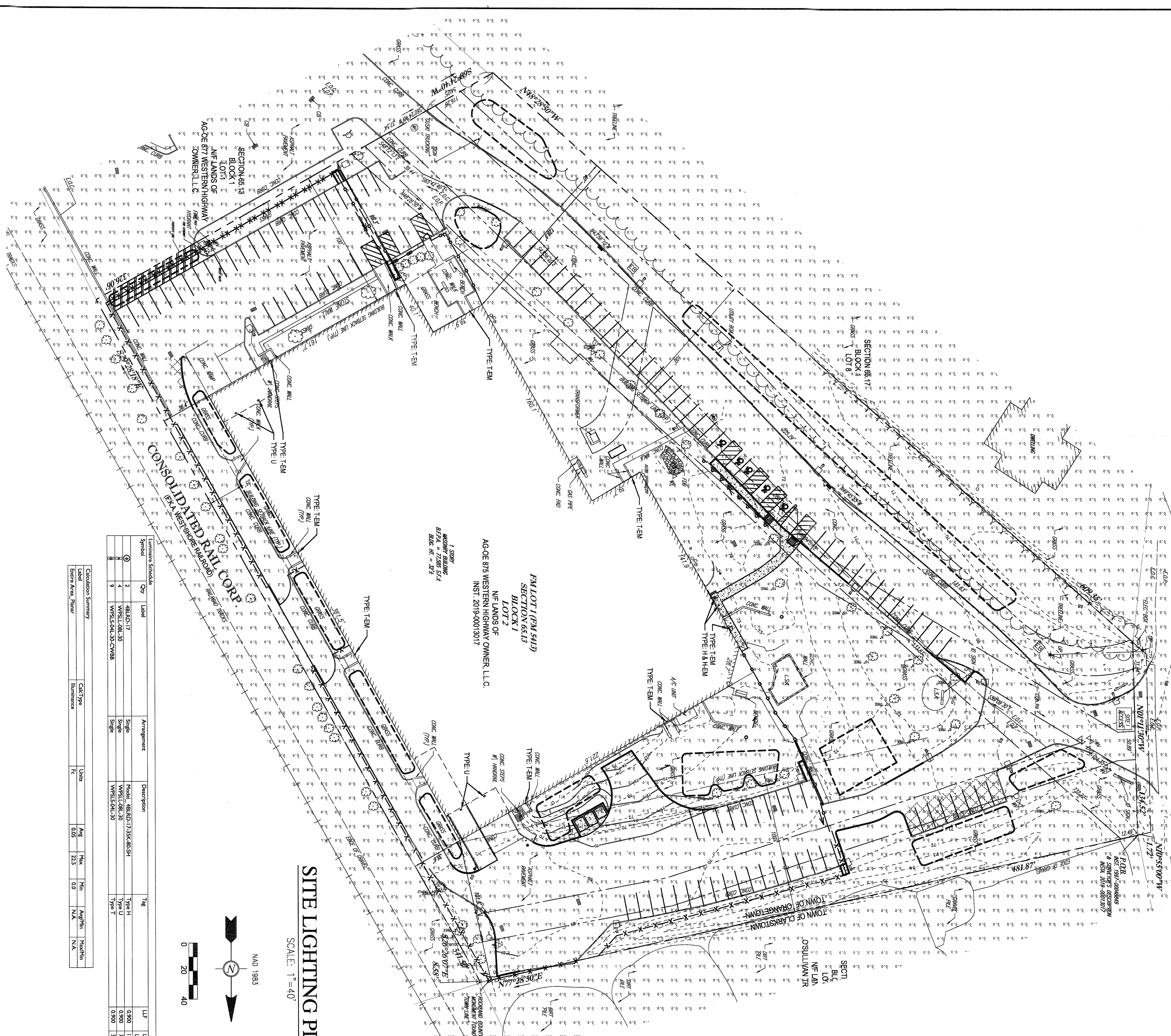


Drawing:
 VEHICULAR CIRCULATION PATH
 ARMORED TRUCK & FIRE TRUCK
 Project Number: 21031
 Responsible Party: JS
 Scale: AS NOTED
 Drawing Number: C-501

Project Number: 21031
 Responsible Party: JS
 Scale: AS NOTED
 Drawing Number: C-501

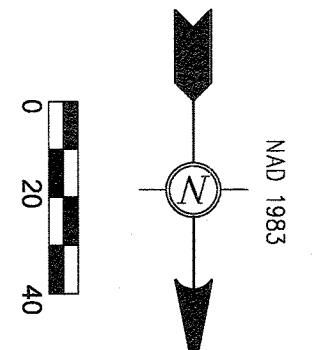
WESTERN HIGHWAY

(AKA COUNTY HIGHWAY ROUTE 19)
(AKA SOUTH PUBLIC RIGHT OF WAY)
(AKA ASPHALT ROADWAY)
(AKA WESTWAY PARKING)



SITE LIGHTING PLAN
SCALE: 1" = 40'

Symbol	Qty	Label	Arrangement	Description	Tag	LT	Luminaire	Watts	Total
1	1	WALL PACK	Single	Model: WPC-30	Type: H	0.00	148	18.7	18.7
2	1	WALL PACK	Single	Model: WPC-30	Type: H	0.00	148	18.7	18.7
3	1	WALL PACK	Single	Model: WPC-30	Type: H	0.00	148	18.7	18.7
4	1	WALL PACK	Single	Model: WPC-30	Type: H	0.00	148	18.7	18.7
5	1	WALL PACK	Single	Model: WPC-30	Type: H	0.00	148	18.7	18.7
6	1	WALL PACK	Single	Model: WPC-30	Type: H	0.00	148	18.7	18.7
7	1	WALL PACK	Single	Model: WPC-30	Type: H	0.00	148	18.7	18.7
8	1	WALL PACK	Single	Model: WPC-30	Type: H	0.00	148	18.7	18.7
9	1	WALL PACK	Single	Model: WPC-30	Type: H	0.00	148	18.7	18.7
10	1	WALL PACK	Single	Model: WPC-30	Type: H	0.00	148	18.7	18.7
11	1	WALL PACK	Single	Model: WPC-30	Type: H	0.00	148	18.7	18.7
12	1	WALL PACK	Single	Model: WPC-30	Type: H	0.00	148	18.7	18.7
13	1	WALL PACK	Single	Model: WPC-30	Type: H	0.00	148	18.7	18.7
14	1	WALL PACK	Single	Model: WPC-30	Type: H	0.00	148	18.7	18.7
15	1	WALL PACK	Single	Model: WPC-30	Type: H	0.00	148	18.7	18.7
16	1	WALL PACK	Single	Model: WPC-30	Type: H	0.00	148	18.7	18.7
17	1	WALL PACK	Single	Model: WPC-30	Type: H	0.00	148	18.7	18.7
18	1	WALL PACK	Single	Model: WPC-30	Type: H	0.00	148	18.7	18.7
19	1	WALL PACK	Single	Model: WPC-30	Type: H	0.00	148	18.7	18.7
20	1	WALL PACK	Single	Model: WPC-30	Type: H	0.00	148	18.7	18.7
21	1	WALL PACK	Single	Model: WPC-30	Type: H	0.00	148	18.7	18.7
22	1	WALL PACK	Single	Model: WPC-30	Type: H	0.00	148	18.7	18.7
23	1	WALL PACK	Single	Model: WPC-30	Type: H	0.00	148	18.7	18.7
24	1	WALL PACK	Single	Model: WPC-30	Type: H	0.00	148	18.7	18.7
25	1	WALL PACK	Single	Model: WPC-30	Type: H	0.00	148	18.7	18.7
26	1	WALL PACK	Single	Model: WPC-30	Type: H	0.00	148	18.7	18.7
27	1	WALL PACK	Single	Model: WPC-30	Type: H	0.00	148	18.7	18.7
28	1	WALL PACK	Single	Model: WPC-30	Type: H	0.00	148	18.7	18.7
29	1	WALL PACK	Single	Model: WPC-30	Type: H	0.00	148	18.7	18.7
30	1	WALL PACK	Single	Model: WPC-30	Type: H	0.00	148	18.7	18.7
31	1	WALL PACK	Single	Model: WPC-30	Type: H	0.00	148	18.7	18.7
32	1	WALL PACK	Single	Model: WPC-30	Type: H	0.00	148	18.7	18.7
33	1	WALL PACK	Single	Model: WPC-30	Type: H	0.00	148	18.7	18.7
34	1	WALL PACK	Single	Model: WPC-30	Type: H	0.00	148	18.7	18.7
35	1	WALL PACK	Single	Model: WPC-30	Type: H	0.00	148	18.7	18.7
36	1	WALL PACK	Single	Model: WPC-30	Type: H	0.00	148	18.7	18.7
37	1	WALL PACK	Single	Model: WPC-30	Type: H	0.00	148	18.7	18.7
38	1	WALL PACK	Single	Model: WPC-30	Type: H	0.00	148	18.7	18.7
39	1	WALL PACK	Single	Model: WPC-30	Type: H	0.00	148	18.7	18.7
40	1	WALL PACK	Single	Model: WPC-30	Type: H	0.00	148	18.7	18.7
41	1	WALL PACK	Single	Model: WPC-30	Type: H	0.00	148	18.7	18.7
42	1	WALL PACK	Single	Model: WPC-30	Type: H	0.00	148	18.7	18.7
43	1	WALL PACK	Single	Model: WPC-30	Type: H	0.00	148	18.7	18.7
44	1	WALL PACK	Single	Model: WPC-30	Type: H	0.00	148	18.7	18.7
45	1	WALL PACK	Single	Model: WPC-30	Type: H	0.00	148	18.7	18.7
46	1	WALL PACK	Single	Model: WPC-30	Type: H	0.00	148	18.7	18.7
47	1	WALL PACK	Single	Model: WPC-30	Type: H	0.00	148	18.7	18.7
48	1	WALL PACK	Single	Model: WPC-30	Type: H	0.00	148	18.7	18.7
49	1	WALL PACK	Single	Model: WPC-30	Type: H	0.00	148	18.7	18.7
50	1	WALL PACK	Single	Model: WPC-30	Type: H	0.00	148	18.7	18.7
51	1	WALL PACK	Single	Model: WPC-30	Type: H	0.00	148	18.7	18.7
52	1	WALL PACK	Single	Model: WPC-30	Type: H	0.00	148	18.7	18.7
53	1	WALL PACK	Single	Model: WPC-30	Type: H	0.00	148	18.7	18.7
54	1	WALL PACK	Single	Model: WPC-30	Type: H	0.00	148	18.7	18.7
55	1	WALL PACK	Single	Model: WPC-30	Type: H	0.00	148	18.7	18.7
56	1	WALL PACK	Single	Model: WPC-30	Type: H	0.00	148	18.7	18.7
57	1	WALL PACK	Single	Model: WPC-30	Type: H	0.00	148	18.7	18.7
58	1	WALL PACK	Single	Model: WPC-30	Type: H	0.00	148	18.7	18.7
59	1	WALL PACK	Single	Model: WPC-30	Type: H	0.00	148	18.7	18.7
60	1	WALL PACK	Single	Model: WPC-30	Type: H	0.00	148	18.7	18.7
61	1	WALL PACK	Single	Model: WPC-30	Type: H	0.00	148	18.7	18.7
62	1	WALL PACK	Single	Model: WPC-30	Type: H	0.00	148	18.7	18.7
63	1	WALL PACK	Single	Model: WPC-30	Type: H	0.00	148	18.7	18.7
64	1	WALL PACK	Single	Model: WPC-30	Type: H	0.00	148	18.7	18.7
65	1	WALL PACK	Single	Model: WPC-30	Type: H	0.00	148	18.7	18.7
66	1	WALL PACK	Single	Model: WPC-30	Type: H	0.00	148	18.7	18.7
67	1	WALL PACK	Single	Model: WPC-30	Type: H	0.00	148	18.7	18.7
68	1	WALL PACK	Single	Model: WPC-30	Type: H	0.00	148	18.7	18.7
69	1	WALL PACK	Single	Model: WPC-30	Type: H	0.00	148	18.7	18.7
70	1	WALL PACK	Single	Model: WPC-30	Type: H	0.00	148	18.7	18.7
71	1	WALL PACK	Single	Model: WPC-30	Type: H	0.00	148	18.7	18.7
72	1	WALL PACK	Single	Model: WPC-30	Type: H	0.00	148	18.7	18.7
73	1	WALL PACK	Single	Model: WPC-30	Type: H	0.00	148	18.7	18.7
74	1	WALL PACK	Single	Model: WPC-30	Type: H	0.00	148	18.7	18.7
75	1	WALL PACK	Single	Model: WPC-30	Type: H	0.00	148	18.7	18.7
76	1	WALL PACK	Single	Model: WPC-30	Type: H	0.00	148	18.7	18.7
77	1	WALL PACK	Single	Model: WPC-30	Type: H	0.00	148	18.7	18.7
78	1	WALL PACK	Single	Model: WPC-30	Type: H	0.00	148	18.7	18.7
79	1	WALL PACK	Single	Model: WPC-30	Type: H	0.00	148	18.7	18.7
80	1	WALL PACK	Single	Model: WPC-30	Type: H	0.00	148	18.7	18.7
81	1	WALL PACK	Single	Model: WPC-30	Type: H	0.00	148	18.7	18.7
82	1	WALL PACK	Single	Model: WPC-30	Type: H	0.00	148	18.7	18.7
83	1	WALL PACK	Single	Model: WPC-30	Type: H	0.00	148	18.7	18.7
84	1	WALL PACK	Single	Model: WPC-30	Type: H	0.00	148	18.7	18.7
85	1	WALL PACK	Single	Model: WPC-30	Type: H	0.00	148	18.7	18.7
86	1	WALL PACK	Single	Model: WPC-30	Type: H	0.00	148	18.7	18.7
87	1	WALL PACK	Single	Model: WPC-30	Type: H	0.00	148	18.7	18.7
88	1	WALL PACK	Single	Model: WPC-30	Type: H	0.00	148	18.7	18.7
89	1	WALL PACK	Single	Model: WPC-30	Type: H	0.00	148	18.7	18.7
90	1	WALL PACK	Single	Model: WPC-30	Type: H	0.00	148	18.7	18.7
91	1	WALL PACK	Single	Model: WPC-30	Type: H	0.00	148	18.7	18.7
92	1	WALL PACK	Single	Model: WPC-30	Type: H	0.00	148	18.7	18.7
93	1	WALL PACK	Single	Model: WPC-30	Type: H	0.00	148	18.7	18.7
94	1	WALL PACK	Single	Model: WPC-30	Type: H	0.00	148	18.7	18.7
95	1	WALL PACK	Single	Model: WPC-30	Type: H	0.00	148	18.7	18.7
96	1	WALL PACK	Single	Model: WPC-30	Type: H	0.00	148	18.7	18.7
97	1	WALL PACK	Single	Model: WPC-30	Type: H	0.00	148	18.7	18.7
98	1	WALL PACK	Single	Model: WPC-30	Type: H	0.00	148	18.7	18.7
99	1	WALL PACK	Single	Model: WPC-30	Type: H	0.00	148	18.7	18.7
100	1	WALL PACK	Single	Model: WPC-30	Type: H	0.00	148	18.7	18.7



2 LIGHT FIXTURE TYPE H
N.T.S.

3 LIGHT FIXTURE TYPE T
N.T.S.

4 LIGHT FIXTURE TYPE U
N.T.S.

DCAK · MSA
ARCHITECTURE AND ENGINEERING

53 HUDSON AVENUE
NYACK, NEW YORK 10960
www.DCAK-MSA.com
Email: info@DCAK-MSA.com
Tel: 845-353-1300 Fax: 845-353-1614

Project Name: Asahi Depository

Project Address: 875 Western Highway Blauvelt, NY 10913

Consultants:

Project Number: 21051
Responsible Party: RC
Reviewed By: DC

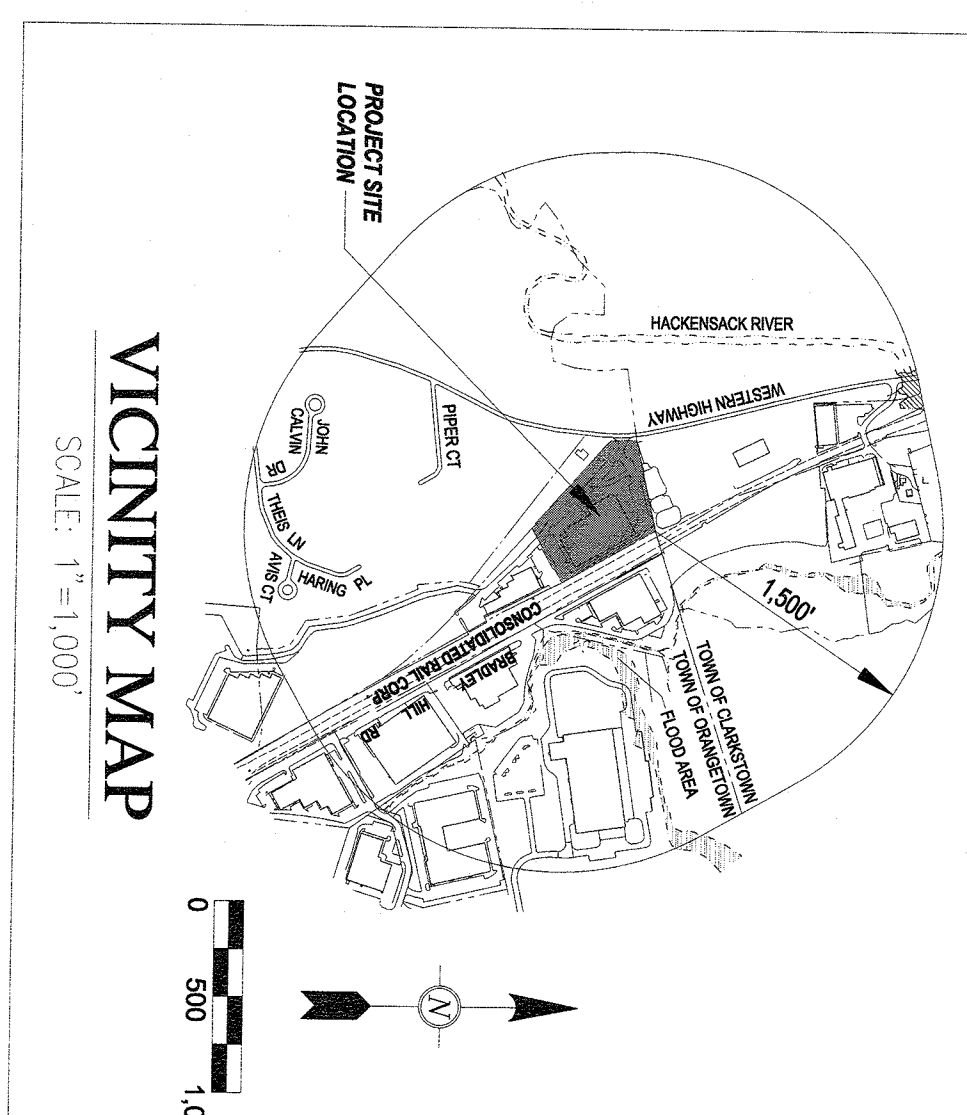
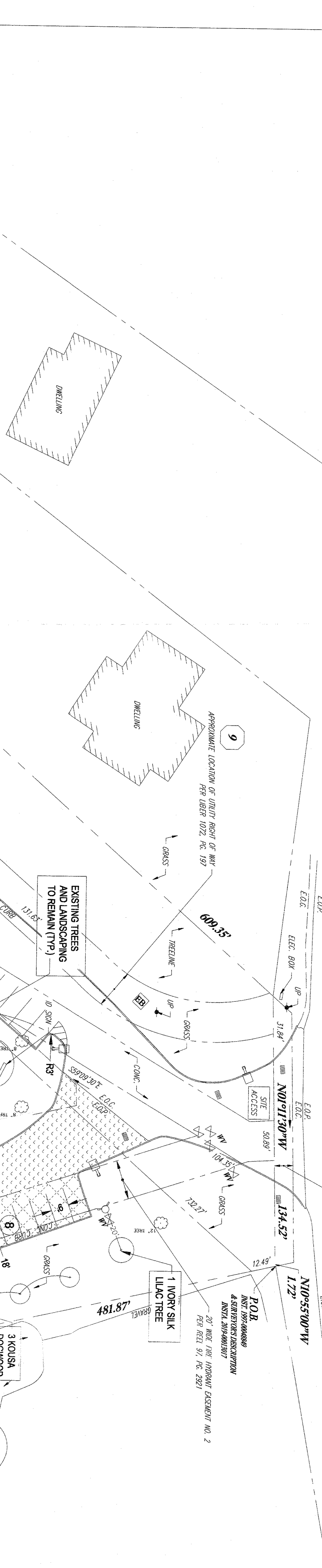
Drawing: SITE LIGHTING PLAN
Scale: AS NOTED

C-6000

STATE OF NEW YORK
LICENSED PROFESSIONAL ENGINEER

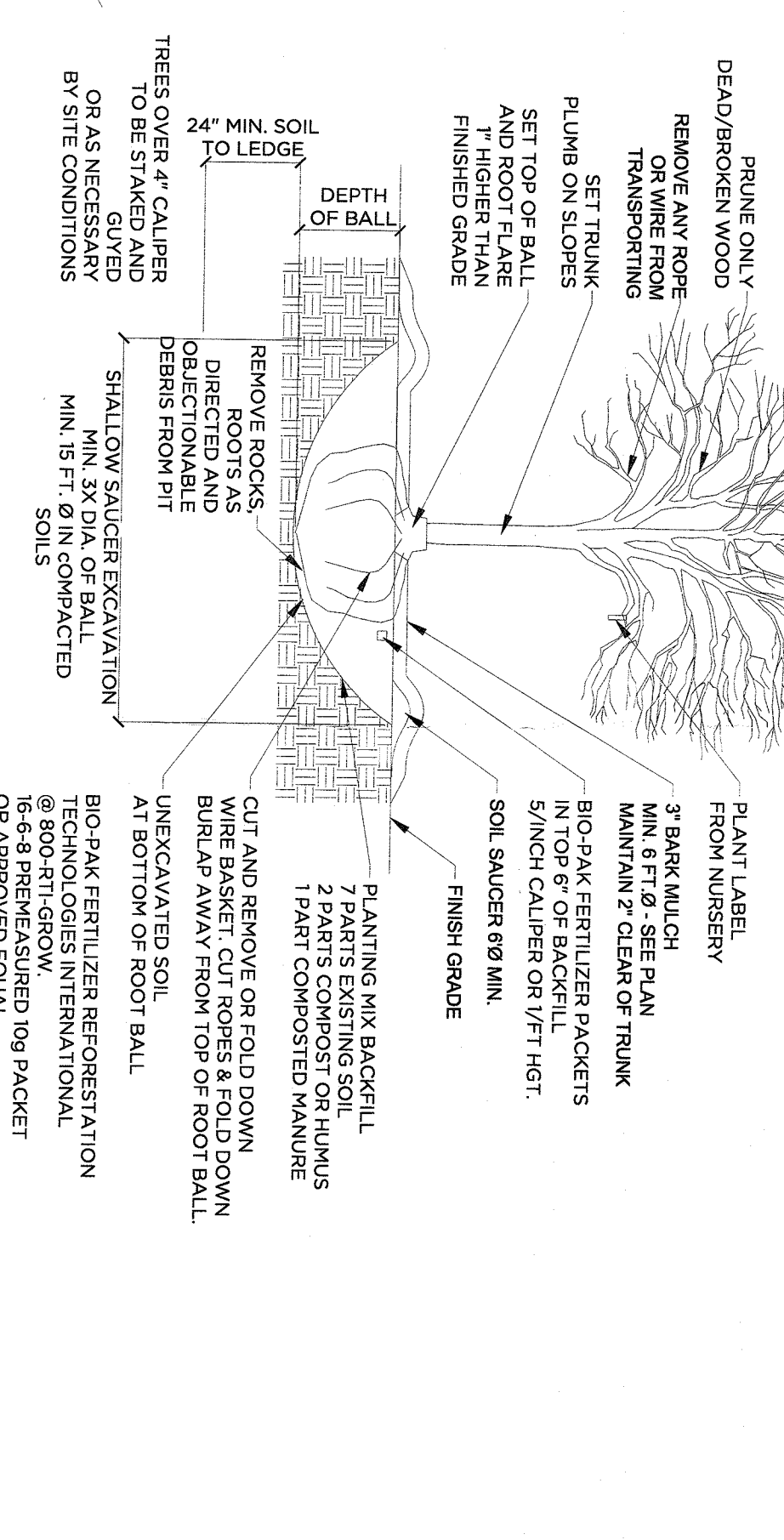
No.	Date	Description	Responsible Party
1	06/13/22	FOR RB	RC

WESTERN HIGHWAY
(AKA COUNTY HIGHWAY ROUTE 19)
(VARIABLE WIDTH PUBLIC RIGHT OF WAY)
(ASPHALT ROADWAY)
(TWO WAY THROUGH)



LEGEND

DESCRIPTION	SYMBOL	EXISTING	PROPOSED
PROPERTY LINE	---	---	---
EASTMENT LINE	---	---	---
BUILDING	▭	▭	▭
CONCRETE SIDEWALK	▨	▨	▨
CONCRETE WALK EDGE	▩	▩	▩
PAVEMENT MARKING	▧	▧	▧
METAL PAVEMENT LINE	▦	▦	▦
CHAIN LINK FENCE	▤	▤	▤
SQUARE BAR FENCE	▣	▣	▣
QUADRANT WALL	▢	▢	▢
VEGETATION LINE	▧	▧	▧
WATER VALVE	⊕	⊕	⊕
FIRE DEPTH CONNECTION	⊖	⊖	⊖
ELECTRIC BOX	⊗	⊗	⊗
CLEAN OUT	⊘	⊘	⊘
SIEN	⊙	⊙	⊙
BOLLARD	⊚	⊚	⊚
CATCH BASIN OR INLET	⊛	⊛	⊛
AREA LIGHT	⊜	⊜	⊜
UTILITY POLE	⊝	⊝	⊝
MANHOLE	⊞	⊞	⊞
EX. TREE TO REMAIN	⊗	⊗	⊗
EX. TREE TO BE REMOVED	⊗	⊗	⊗
PARKING SPACE COUNT	#	#	#
TRUCK TRAFFIC	⊠	⊠	⊠
SECTION A HATCH	▨	▨	▨
SECTION B HATCH	▩	▩	▩
SECTION B HATCH	▦	▦	▦
SECTION B HATCH	▤	▤	▤
ALTERNATE BID 1	▧	▧	▧
ALTERNATE BID 2	▩	▩	▩
ALTERNATE BID 3	▦	▦	▦
ALTERNATE BID 3	▤	▤	▤



1 TREE PLANTING (TYP. DETAIL)
N.T.S.

PROPOSED PLANTING PLAN

QTY	Botanical Name	Common Name	Size/Container/B&B	Spacing/Remarks
3	Cornus kousa	Kousa Dogwood	1.5-2" Cal. B&B	As Shown
1	Nyssa sylvatica	Sourgum	2-2.5" Cal. B&B	As Shown
2	Prunus serrulata Kwanzan	Kwanzan Cherry Tree	2-2.5" Cal. B&B	As Shown
2	Syringa reticulata Ivory Silk	Ivory Silk Japanese Lilac Tree	2-2.5" Cal. B&B	As Shown

NOTES:

- Trees shall be healthy and disease free, and of species, variety and size as specified.
- Trees shall be a minimum of 20 feet away from hydrants, and 25 feet away of street corner.
- Contact the Landscape Architect or Construction Manager if any utilities or obstructions prevent the tree from being planted as shown on the plans.

2 PLANT SCHEDULE
N.T.S.

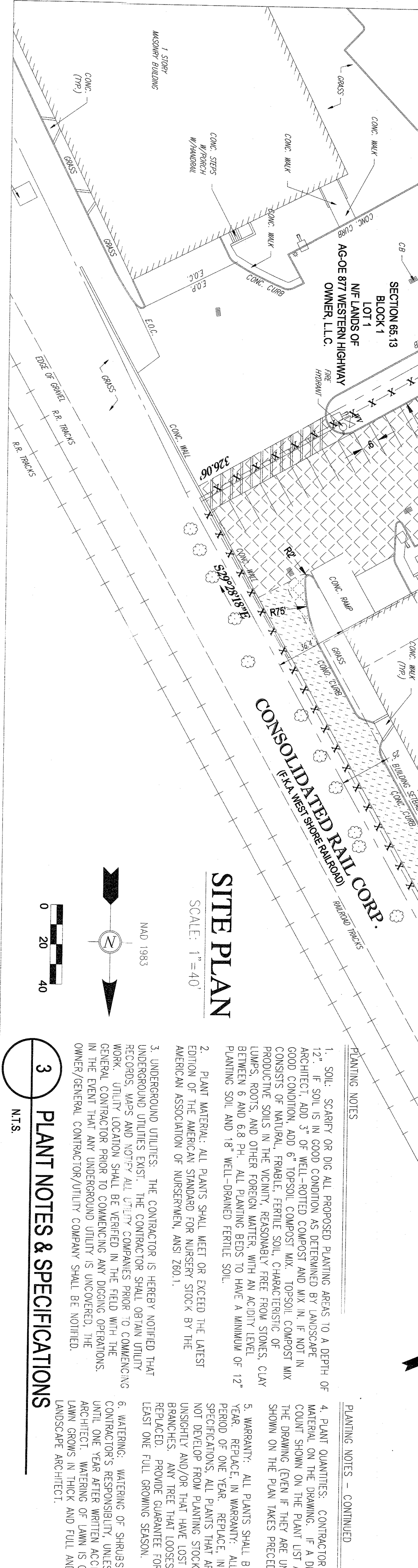
PLANTING NOTES - CONTINUED

- LANDSCAPE CONTRACTORS: LANDSCAPE MATERIALS SHALL BE INSTALLED BY LOCAL HANDYMAN. MATERIALS SHALL BE INSTALLED BY LOCAL COMPANIES WITH THE CONDITIONS OF THE AREA THAT EMPLOYERS CERTIFIED NURSERY PROFESSIONALS OR WITH AN OWNER OF FOREMAN THAT HAS A DEGREE IN HORTICULTURE, ARBORICULTURE, BOTANY OR AN OTHER LANDSCAPE DESIGN OR RELATED EXPERIENCE.
- STREET TREES: ALL STREET AND SHADE TREES PLANTED NEAR PEDESTRIAN OR VEHICULAR STREET TREES: ALL STREET AND SHADE TREES PLANTED NEAR PEDESTRIAN OR VEHICULAR ACCESS SHALL BE LABELED UP TO 7' MINIMUM.
- EXISTING LANDSCAPE BEDS: REPLACE PLANTS IN POOR CONDITION WITH NEW OR EXISTING LANDSCAPE BEDS. REPLACE WEED AND INSTALL 3" SHREDED CEDAR BARK MULCH. EDGE WHEREVER BED MEETS LAM.
- PLANTING: ALL PLANTS TO BE PLACED AT THE SAME RELATIONSHIP OF FINISH GRADE AS AT THE NURSERY.

3 PLANT NOTES & SPECIFICATIONS
N.T.S.

PLANTING NOTES

- SOIL: SCARIFY OR DIG ALL PROPOSED PLANTING AREAS TO A DEPTH OF 12". IF SOIL IS IN GOOD CONDITION AS DETERMINED BY LANDSCAPE GOOD CONDITION, 3" OF WELL-SORTED COMPOST AND MIX IN IF NOT IN CONSISTS OF NATURAL, FRAGMENT, FIBRE, SILT, SHADES, SOILS, COMPOST MIX PRODUCTIVE SOILS IN THE VICINITY, RESPONSIBLY FREE FROM STONES, CLAY LUMPS, ROOTS, AND OTHER FOREIGN MATERIAL WITH AN ACIDITY LEVEL BETWEEN 6 AND 6.8 PH. ALL PLANTING BEDS TO HAVE A MINIMUM OF 12" PLANTING SOIL AND 18" WELL-DRAINER FERTILE SOIL.
- PLANT MATERIAL: ALL PLANTS SHALL MEET OR EXCEED THE LATEST EDITION OF THE AMERICAN STANDARD FOR NURSERY STOCK BY THE AMERICAN ASSOCIATION OF NURSERYMEN, ANSI Z601.1.
- UNDERGROUND UTILITIES: THE CONTRACTOR IS HEREBY NOTIFIED THAT UNDERGROUND UTILITIES SHALL BE LOCATED BY THE GENERAL CONTRACTOR PRIOR TO COMMENCING ANY DIGGING OPERATIONS. IN THE EVENT THAT ANY UNDERGROUND UTILITY IS UNCOVERED, THE OWNERS/GENERAL CONTRACTOR/UTILITY COMPANY SHALL BE NOTIFIED.



SITE PLAN
SCALE: 1"=40'
NAD 1983

DCAK - MSA
ARCHITECTURE AND ENGINEERING

53 HUDSON AVENUE
NYACK, NEW YORK 10960
www.DCAK-MSA.com
Email: info@DCAK-MSA.com
Tel: 845-353-1300 Fax: 845-353-1614

Project Name: **Asahi Depository**

Project Address:
875 Western Highway
Blauvelt, NY 10913

Consultants

Project Number: 21091
Scale: AS NOTED
Drawing Number: L-100

REVISIONS

No.	Date	Description	Responsible Party
-	06/02/22	FOR A.C.A.B.O.R.	B.M.

Project Number: 21091
Scale: AS NOTED
Drawing Number: L-100