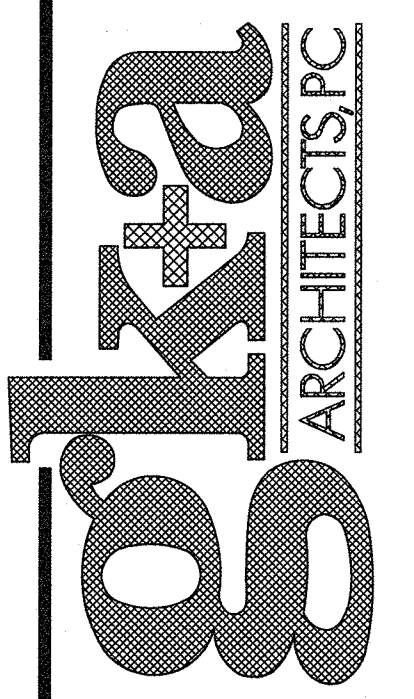


1 PROPOSED FLOOR PLAN
 1/4" = 1'-0" NOTE:

36 Arnes Avenue
 Rutherford, NJ 07070
 Tel. 201.896.0333
 Fax. 201.896.9469
 email@gkanda.biz



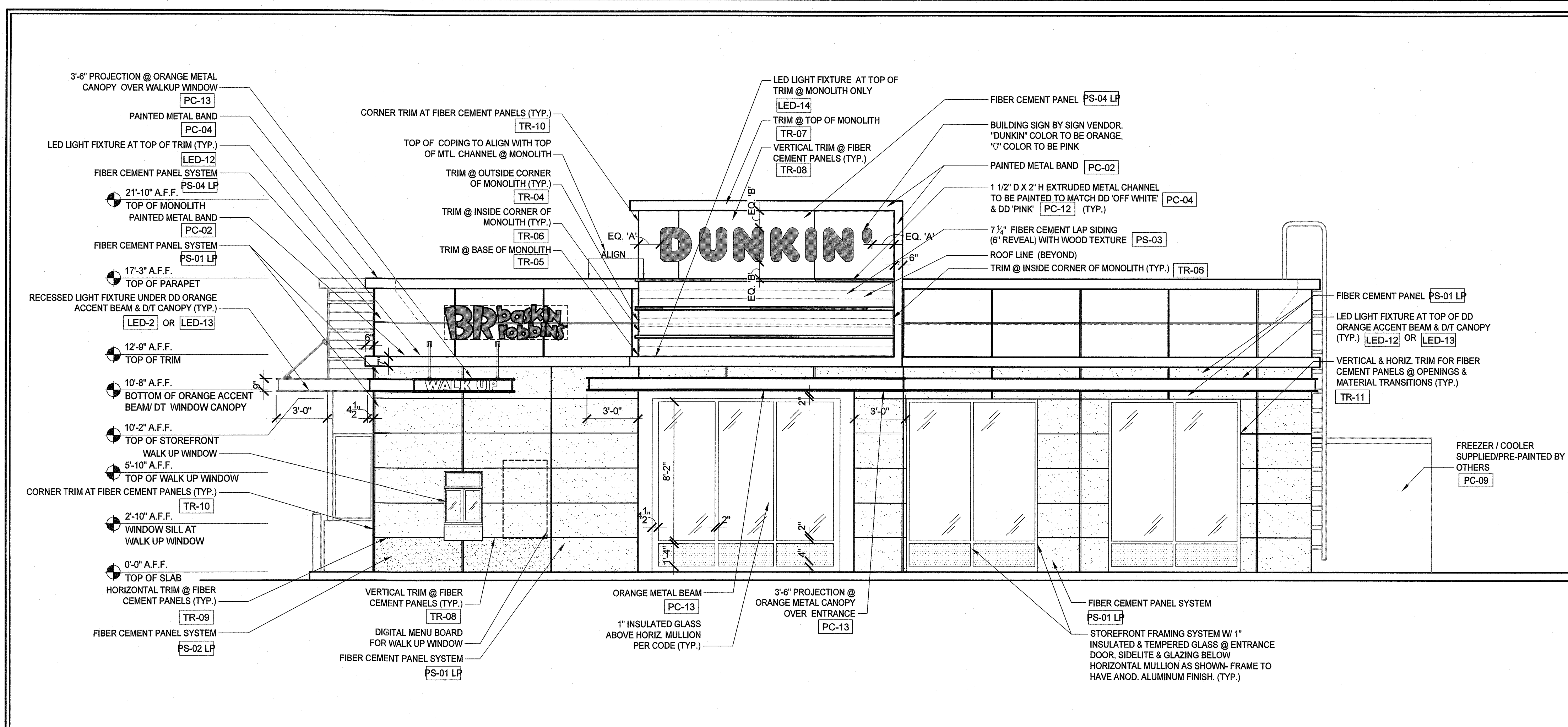
Gary Kliesch and Associate Architects

Rev. No.	Drawing Issues /Revisions	Date

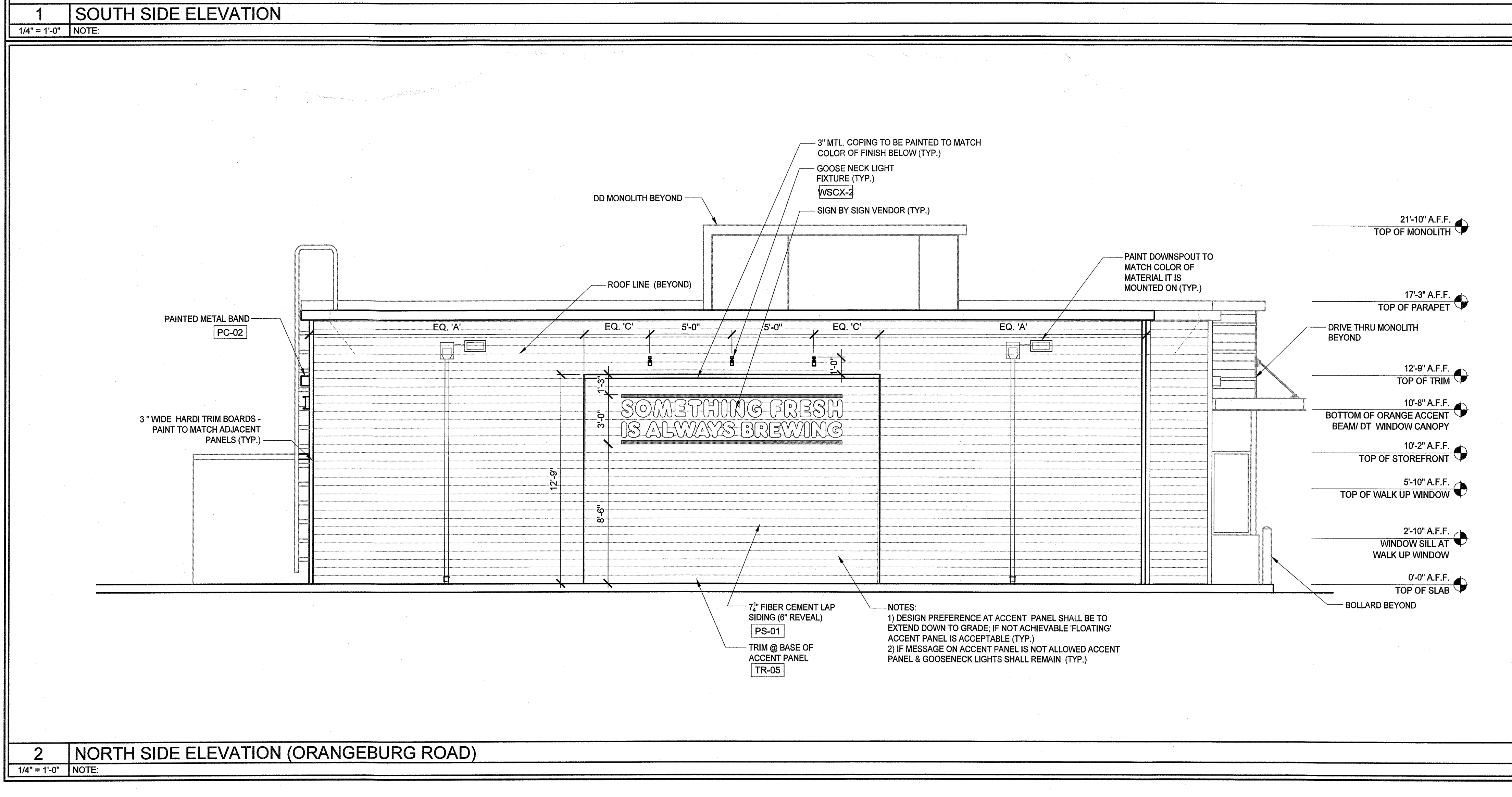
NJ: AI 1332 NICID: 21D00025000
 NY: 025618 CT: ARI 0009367
 FL: AR8782 DE: SS-0001765
 WI: 11180-5 MD: 14129
 PA: RA-015112-B SC: 8935
 D.C.: ARC101838 MA: 10610
 GA: RA 013893 MI: 1301064135
 VA: 401016573 IL: 001023566
 NC: 11736 WV: 4569 NH: 04487
 AIA, NCARB, NCOID
Gary Kliesch

Proposed:
DUNKIN'
 Orangetown Shopping Center
 Orangetown, NY
 PC#

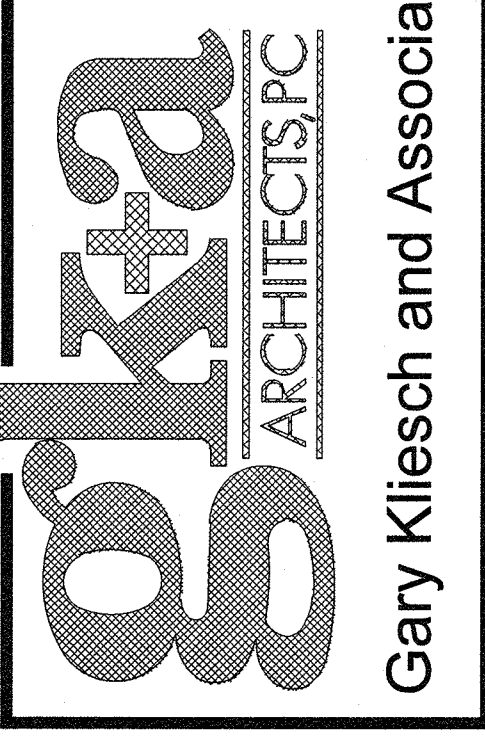
Drawing Title: PROPOSED FLOOR PLAN	
Date: 01/19/22	Dwg No. A 1.0
Drawn By: G.D./C.F.	Checked By: CF
Job No: 20-225	1 of 3



SIGNAGE DATA SCHEDULE			
DESCRIPTION	ALLOWED	PROPOSED	VARIANCE
(2) BLDG. SIGN @ SOUTH ELEVATION PRIMARY SIGN "DUNKIN" SECONDARY SIGN "BASKIN ROBBINS"	ILLUMINATED BUSINESS SIGNS WITH TOTAL SIGN AREA PER USE NOT TO EXCEED 15% OF THE SIGN WALL AREA (< 40 S.F.) FRONT FACADE (SOUTH ELEV.) SQ. FT.: 1,072 S.F. TOTAL SIGNAGE SQ. FT. ALLOWED: 161 SQ. FT.	(1) DUNKIN = 24.8 S.F. BLDG. SIGN PROJECTION = 5" BLDG. SIGN HEIGHT ABOVE GRADE = 18'-3" (1) BASKIN ROBBINS = 14.5 S.F. BLDG. SIGN PROJECTION = 5" BLDG. SIGN HEIGHT ABOVE GRADE = 13'-8"	NO
TOTAL SOUTH ELEV.		24.8 + 14.5 = 39.3 S.F.	
(1) BLDG. SIGN @ EAST ELEVATION PRIMARY SIGN "DD" SIGN	ILLUMINATED BUSINESS SIGNS WITH TOTAL SIGN AREA PER USE NOT TO EXCEED 15% OF THE SIGN WALL AREA (< 40 S.F.) FRONT FACADE (SOUTH ELEV.) SQ. FT.: 691 S.F. TOTAL SIGNAGE SQ. FT. ALLOWED: 103 SQ. FT.	(1) DD = 17.6 S.F. BLDG. SIGN HEIGHT ABOVE GRADE = 13'-3"	NO
TOTAL EAST ELEV.		17.6 S.F.	
(1) BLDG. SIGN @ NORTH ELEVATION "SOMETHING FRESH IS ALWAYS BREWING" ACCENT PANEL SIGN	ILLUMINATED BUSINESS SIGNS WITH TOTAL SIGN AREA PER USE NOT TO EXCEED 15% OF THE SIGN WALL AREA (< 40 S.F.) FRONT FACADE (SOUTH ELEV.) SQ. FT.: 1,072 S.F. TOTAL SIGNAGE SQ. FT. ALLOWED: 161 SQ. FT.	(1) SOMETHING FRESH IS ALWAYS BREWING = 40.5 S.F. BLDG. SIGN HEIGHT ABOVE GRADE = 8'-6"	NO
TOTAL WEST ELEV.		40.5 S.F.	
TOTAL SIGNAGE S.F.		39.3 + 17.6 + 40.5 = 97.4	
NOTES			
(1) PYLON SIGN FACE "DUNKIN"	(*)	(1) DUNKIN = 37.5 S.F.	NO
NOTES			
1) ZONE: CS 2) SIGNAGE INFORMATION TAKEN FROM THE TOWN OF ORANGETOWN ORDINANCE ZONING - 43 ATTACHMENT 5 COMMERCIAL ZONES			



36 Ames Avenue
 Rutherford, NJ 07070
 Tel. 201.896.0333
 Fax. 201.896.9469
 email@gkanda.biz



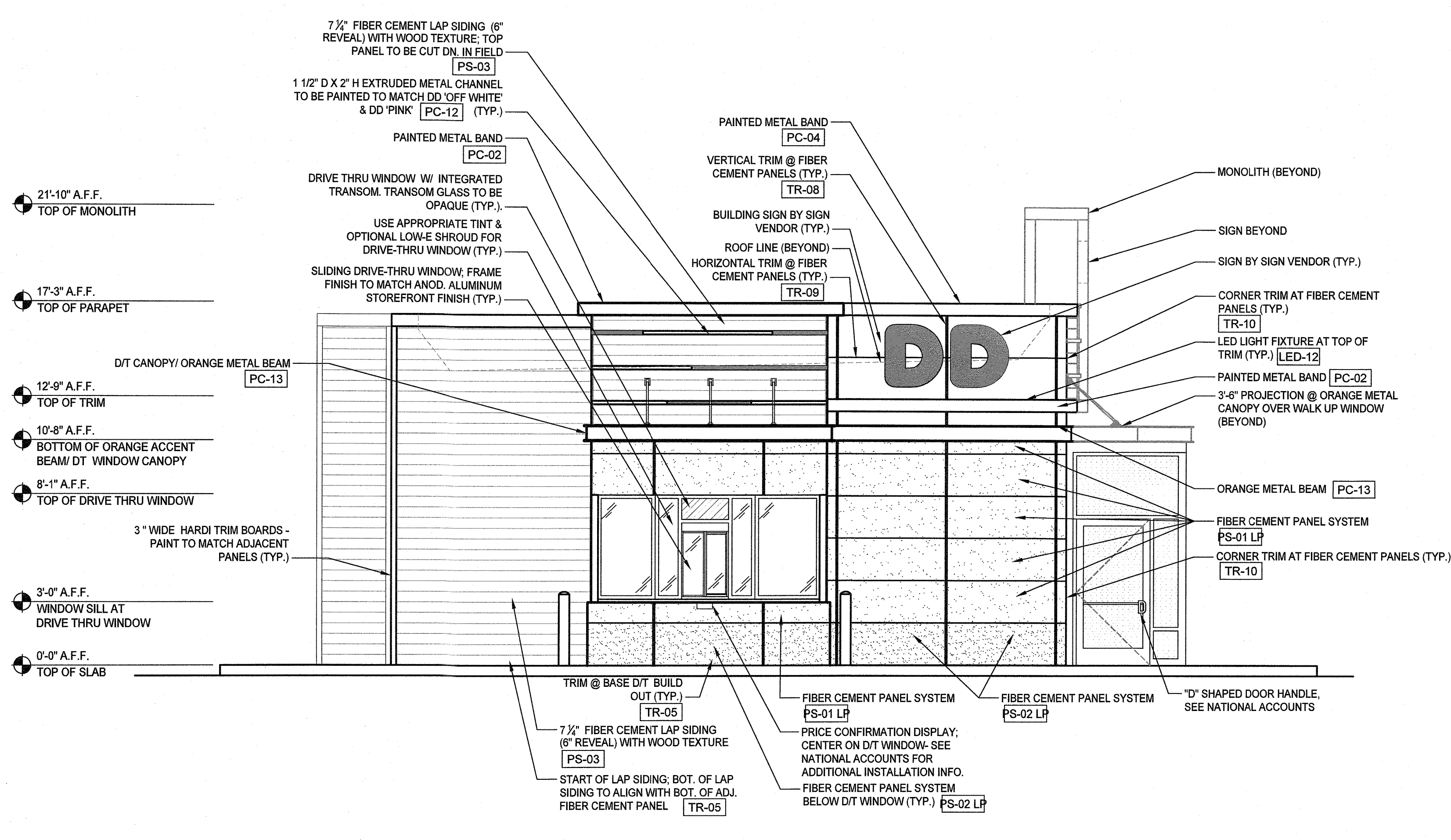
Rev. No.	Date	Description

N.J. AI 13332
 N.Y. 026518
 FL. AR65782
 WI. 11180-5
 D.C.: ARC101838 MA 10610
 GA: RA 013883
 VA: 40106373
 NC: 11736
 CT: ARI 0009367
 DE: S5-0001785
 MD: 14129
 PA: RA-015112-B SC: 8935
 MI: 1301064135
 IL: 001.023586
 WV: 4569 NH: 04487
 AIA, NCARB, NCBID
Gary Kliesch

Proposed:
DUNKIN'
 Orangetown Shopping Center
 Orangetown, NY
 PC #

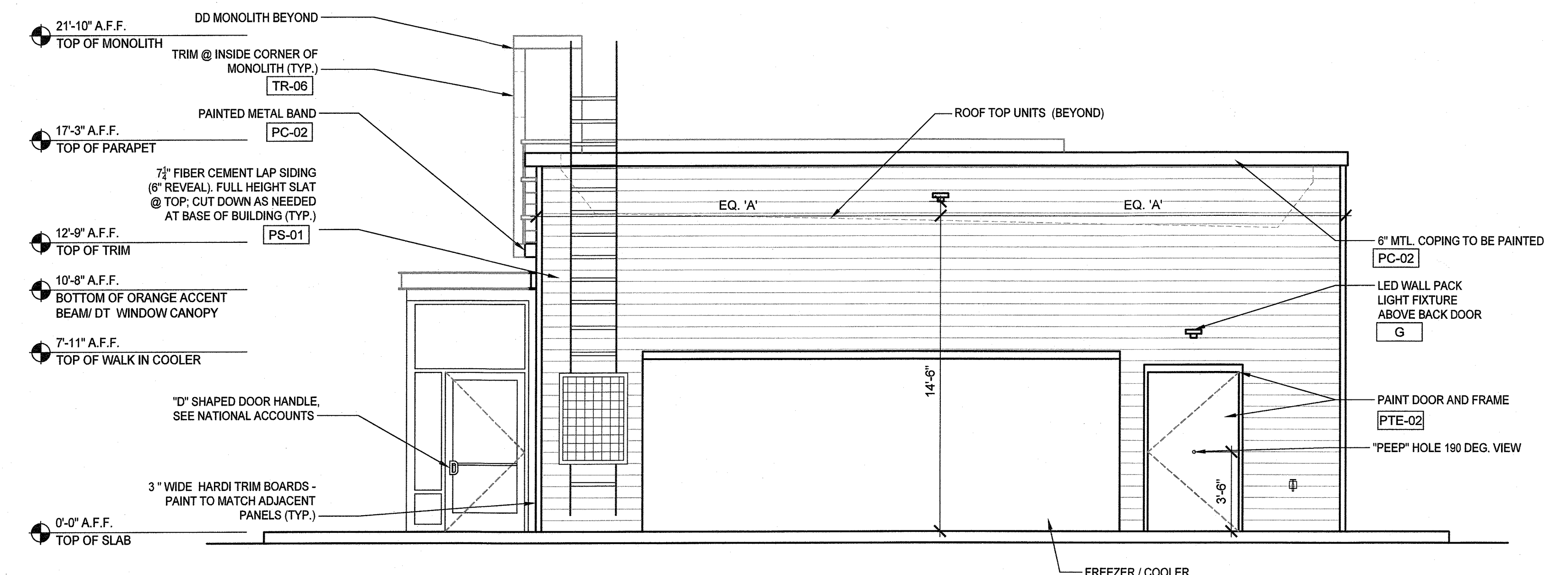
Drawing Title:
 PROPOSED EXTERIOR ELEVATIONS

Date:	Dwg No.
01/19/22	A
Drawn By:	2.0
G.D./C.F.	
Checked By:	CF
Job No:	20-225
	2 of 3



1 EAST SIDE ELEVATION (@ DUTCH HILL ROAD)

1/4" = 1'-0" NOTE:



2 WEST SIDE ELEVATION

1/4" = 1'-0" NOTE:

EXTERIOR WALL PAINT				
CODE	MATERIAL	MANUFACTURER	PRODUCT #	DESCRIPTION / REMARKS
PTE-02	PAINT	SHERWIN WILLIAMS	CHARCOAL FINISH	SW 7069 "IRON ORE"

EXTERIOR FIBER-CEMENT EXTERIOR SIDING AND PANELS				
CODE	MATERIAL	MANUFACTURER	PRODUCT #	DESCRIPTION / REMARKS
PS-01	FIBER CEMENT PANEL	JAMES HARDIE	GRAY FINISH	COLOR: "AGED PEWTER" SURFACE: HARDIE SIDING OR COLOR: "PRIMED FINISH" FIELD PAINT TO MATCH PTE-01 DIMENSION: 8 1/4" X 12 X 5/16" THK WITH 6" SIDING EXPOSURE
PS-01 LP	FIBER CEMENT PANEL	JAMES HARDIE	GRAY FINISH	COLOR: "AGED PEWTER" SURFACE: PRE-FINISHED REVEAL PANEL DIMENSION: (5/16" x 48" X 96") WITH COLOR MATCHED TRIMS AND COLOR MATCHED SCREWS OR COLOR: "PRIMED FINISH" FIELD PAINT TO MATCH PTE-01
PS-02	FIBER CEMENT SIDING	JAMES HARDIE	CHARCOAL FINISH	COLOR: "IRON GRAY - VOLCANO GRAY" SURFACE: HARDIE SIDING OR COLOR: "PRIMED FINISH" FIELD PAINT TO MATCH PTE-02 DIMENSION: 8 1/4" X 12 X 5/16" THK WITH 6" SIDING EXPOSURE
PS-02 LP	FIBER CEMENT PANEL	JAMES HARDIE	CHARCOAL FINISH	COLOR: "IRON GRAY - VOLCANO GRAY" SURFACE: PRE-FINISHED REVEAL PANEL DIMENSION: (5/16" x 48" X 96") WITH COLOR MATCHED TRIMS AND COLOR MATCHED SCREWS OR COLOR: "PRIMED FINISH" FIELD PAINT TO MATCH PTE-02
PS-03	FIBER CEMENT SIDING	WOODTONE	WOOD FINISH	COLOR: "HONEY GLAZE" WOOD PATTERN SURFACE: WOOD PATTERN PLANK DIMENSION: 8 1/4" X 12 X 5/16" THK WITH 6" SIDING EXPOSURE NOTE: NAILS TO MATCH WOOD FINISH
PS-04 LP	FIBER CEMENT PANEL	JAMES HARDIE	OFF WHITE FINISH	COLOR: "ARCTIC WHITE" SURFACE: PRE-FINISHED REVEAL PANEL DIMENSION: (5/16" x 48" X 96") WITH COLOR MATCHED TRIMS AND COLOR MATCHED SCREWS OR COLOR: "PRIMED FINISH" FIELD PAINT TO MATCH PTE-04

EXTERIOR METAL PAINTED COATINGS				
CODE	MATERIAL	MANUFACTURER	PRODUCT #	DESCRIPTION / REMARKS
PC-02	PAINTED COATING	MATTHEWS PAINT	CHARCOAL FINISH	COLOR: MP 10269 DARK SLATE FINISH LVS SATIN V2.0
	PAINTED COATING	SHERWIN WILLIAMS	CHARCOAL FINISH	SW 7069 "IRON ORE"
	PAINTED COATING	POWDER COAT	CHARCOAL FINISH	SW 7069 "IRON ORE"
PC-04	PAINTED COATING	MATTHEWS PAINT	OFF WHITE FINISH	COLOR MATCH PMS COOL GRAY 1C MAP ULTRA LOW V.O.C.
	PAINTED COATING	SHERWIN WILLIAMS	OFF WHITE FINISH	SW 7063 "NEBULOUS WHITE"
	PAINTED COATING	POWDER COAT	OFF WHITE FINISH	SW 7063 "NEBULOUS WHITE"
PC-09	PAINTED COATING	SHERWIN WILLIAMS OR FACTORY FINISH TO MATCH SW COLOR	WALK-IN	SW 7069 "IRON ORE"
	PAINTED COATING	POWDER COAT TO MATCH SHERWIN WILLIAMS SW COLOR	WALK-IN	SW 7069 "IRON ORE"
PC-12	PAINTED COATING	MATTHEWS PAINT	DD PINK FINISH	COLOR MATCH PMS 219 C COLOR: MP79206 R161426 FINISH: LVS SATIN V1.0 OVER MP55898 WHITE BASECOAT
	PAINTED COATING	SHERWIN WILLIAMS	DD PINK FINISH	COLOR MATCH PMS 219 C
	PAINTED COATING	POWDER COAT	DD PINK FINISH	COLOR MATCH PMS 219 C
PC-13	PAINTED COATING	MATTHEWS PAINT	DD ORANGE FINISH	COLOR MATCH PMS 165C COLOR: MP79700 R161426 FINISH: LVS SATIN V1.0 OVER MP55898 WHITE BASECOAT
	PAINTED COATING	SHERWIN WILLIAMS	DD ORANGE FINISH COLOR # 5059990	Blended At Sherwin Williams Product Finishes, Lowell MA Product LV3 - Genesis Low VOC Satin GT1039 Orange Toner 765.97g / 19gal GT1511 Low VOC Gloss Clear 529.21g / 12gal GT1043 Autumn Orange 194.04g / 05gal GT1011 Artic White 137.20g / 02gal GR1068 Reducer 442.28g / 13gal GT1510 Low VOC Flat Clear 2157.21g / 49gal
	PAINTED COATING	POWDER COAT	DD ORANGE FINISH	COLOR MATCH PMS 165C
	PAINTED COATING	POWDER COAT	DD ORANGE FINISH	COLOR MATCH PMS 165C

EXTERIOR METAL TRIM				
CODE	MATERIAL	MANUFACTURER	PRODUCT #	DESCRIPTION / REMARKS
TR-04	METAL	TAMLYN	(XOCLP34) OUTSIDE CORNER TRIM. USED AT TOWER ELEMENT	TO MATCH FIBER CEMENT LAP SIDING PS-03
TR-05	METAL	TAMLYN	(XS516) BOTTOM "STARTER" TRIM. USED AT TOWER ELEMENT	CLEAR ANODIZED
TR-06	METAL	TAMLYN	(JMH34) VERTICAL TERMINATION TRIM-TYP. USED AT TOWER ELEMENT	FACTORY FINISH TO MATCH FIBER CEMENT LAP SIDING PS-03
TR-07	METAL	TAMLYN	(JMH716) TOP TRIM USED AT TOWER ELEMENT	FACTORY FINISH TO MATCH FIBER CEMENT LAP SIDING PS-03
TR-08	METAL	JAMES HARDIE	JH SURROUND VERTICAL TRIM	FINISH: FACTORY CLEAR ANODIZED 16 GA TRIM AVAILABLE IN 8'-0" LENGTHS. USED WITH JAMES HARDIE REVEAL PANELS
TR-09	METAL	JAMES HARDIE	JH SURROUND HORIZONTAL TRIM	FINISH: FACTORY CLEAR ANODIZED 16 GA TRIM AVAILABLE IN 8'-0" LENGTHS. USED WITH JAMES HARDIE REVEAL PANELS
TR-10	METAL	JAMES HARDIE	JH SURROUND OUTSIDE CORNER TRIM	FINISH: FACTORY CLEAR ANODIZED 16 GA TRIM AVAILABLE IN 8'-0" LENGTHS. USED WITH JAMES HARDIE REVEAL PANELS
TR-11	METAL	JAMES HARDIE	JH SURROUND J-CHANNEL TRIM	FINISH: FACTORY CLEAR ANODIZED 16 GA TRIM AVAILABLE IN 8'-0" LENGTHS. USED WITH JAMES HARDIE REVEAL PANELS. NOTE: CAN BE USED VERTICALLY & HORIZONTALLY @ PENETRATION OR TRANSITION W/ OTHER MATERIALS

3 FINISH SCHEDULE

N.T.S. NOTE:

36 Ames Avenue
Rutherford, NJ 07070
Tel: 201.896.0333
Fax: 201.896.9489
email@gkanda.biz



Gary Kliesch and Associate Architects

Rev. No.	Date	Drawing Issues / Revisions

Professional Seal: State of New York, Licensed Architect, Gary Kliesch, AIA, NCARB, NCAID.

Professional Information:
 NJ: AI 13532
 NY: 026618
 FL: AR95762
 WI: 11180-5
 PA: RA-015112-B SC: 8935
 D.C.: ARC101898 MA: 10610
 GA: RA 013983
 VA: 401016373
 NC: 11736
 MI: 1301064135
 IL: 001.023686
 WV: 4569
 NH: 04487

Proposed:
DUNKIN'
 Orangetown Shopping Center
 Orangetown, NY
 PC #

Drawing Title:
PROPOSED EXTERIOR ELEVATIONS

Date:	01/19/22	Dwg No.	A 3.0
Drawn By:	G.D./C.F.	Checked By:	CF
Job No.:	20-225	3 of 3	