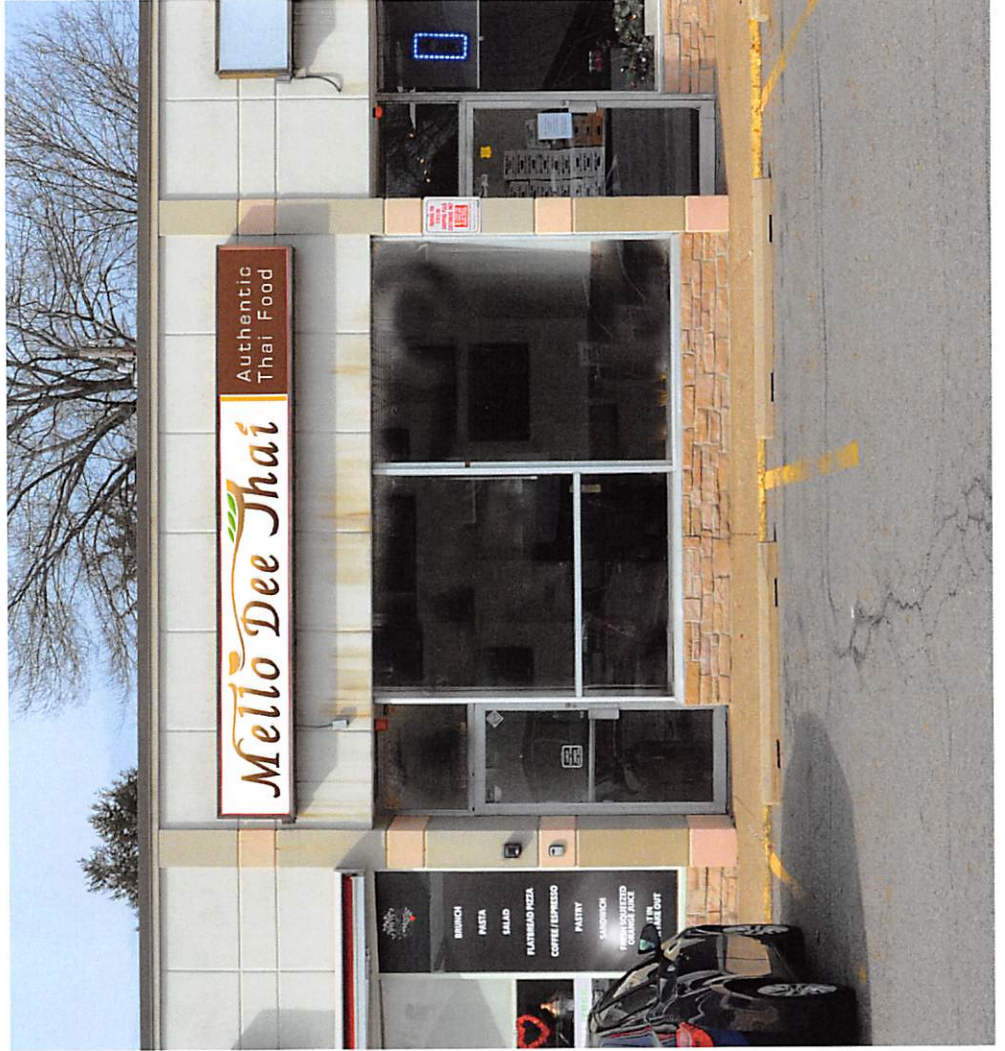


RE-FACE OF EXISTING LIGHT BOX SIGN

180"



A Full Service Sign Company
 20-H Mountainview Ave
 Orangeburg, NY 10962

Re-face of
 existing
 light box sign
 24" x 180"
 one piece lexan
 30 sq. ft. total

X: *Ra 2*
 DATE: *1/30/22*
 quattro construction 11-13-08

RE-FACE OF EXISTING LIGHT BOX SIGN



A Full Service Sign Company
20-H Mountainview Ave
Orangeburg, NY 10962

Re-face of
existing
light box sign

24" x 180"
one piece lexan

30 sq. ft. total

X:

DATE: 1/30/22