

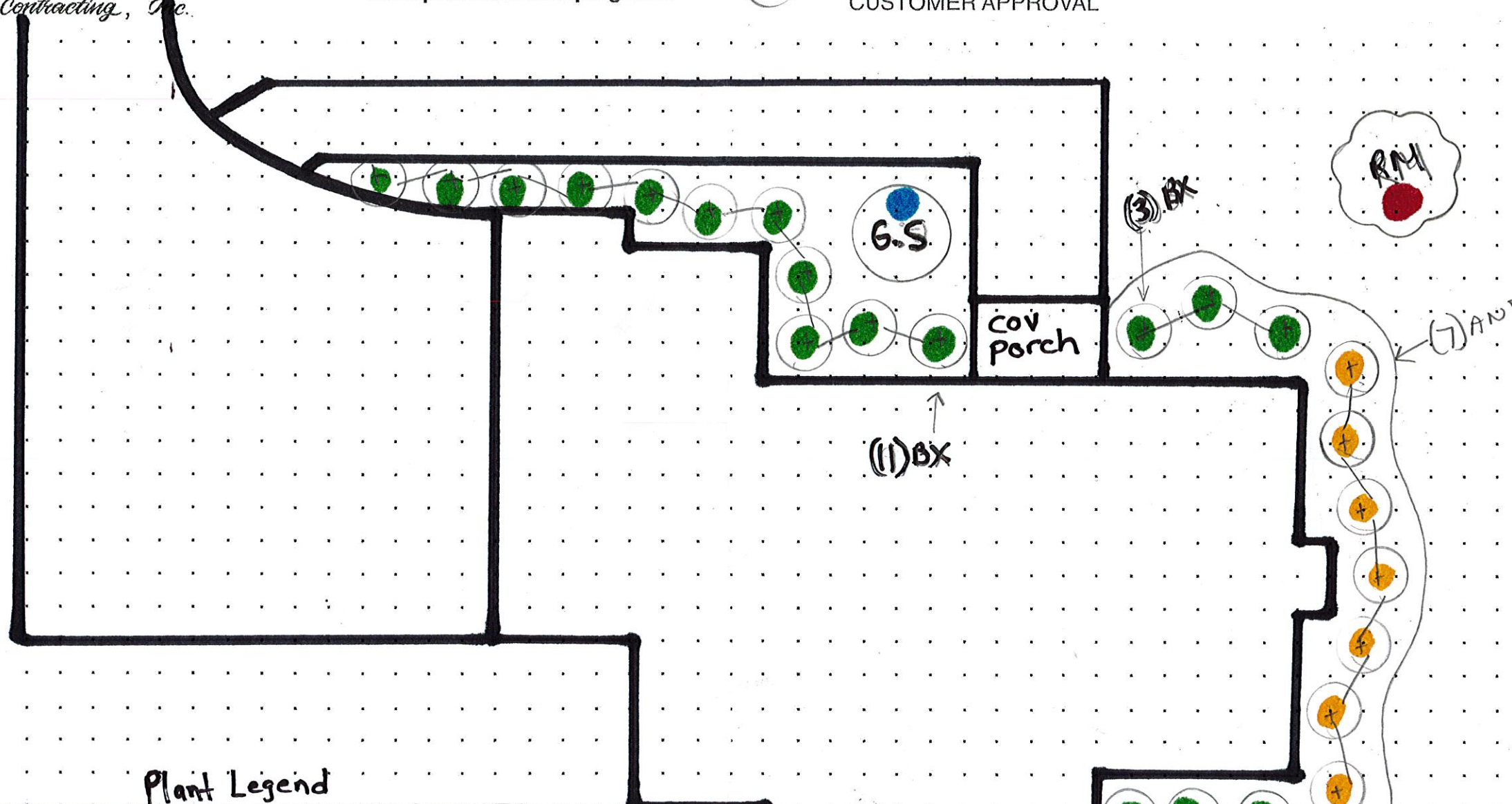


11 Pineview Road, West Nyack, NY 10994
 102 Goshen Road, Chester, NY 10918
 Tel.: 845-727-8815 • Fax: 845.727-3448
 www.procutlandscaping.com

CUSTOMER _____
 INFO 152 Kings Highway, Town of Orangetown
 CUSTOMER APPROVAL _____

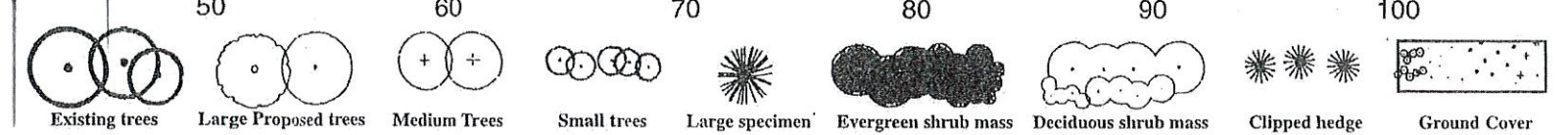
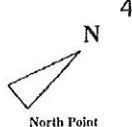
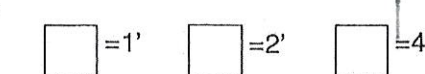
- Abelia
- Abies (Concolor)
- Acer Palmatum (Bloodgood)
- Acer Palmatum Dissectum
- Cutleaf Maple
- Acer Platanoides (Crimson King)
- Amelanchier (Serviceberry)
- Aronia (Chokeberry)
- Aucuba Japonica (Variegata)
- Berberis (Crimson Pygmy)
- Berberis (Bonanza Gold)
- Berberis (Rose Glow)
- Betula (River Birch)
- Buddleja (Butterfly Bush)
- Buxus (Green Beauty)
- Buxis (Green Gem)
- Buxus (English Dwarf)
- Buxus (Variegata)
- Calluna (Scots Heather)
- Carpinus (Columnar European Hornbeam)
- Caryopteris (Blue Mist Spirea)
- Caryopteris (Varietal)
- Cedrus (Blue Atlas)
- Cedrus (Weeping Blue Atlas Cedar)
- Cercidiphyllum (Katsura)
- Cercis Eastern Redbud
- Chamaecyparis (Weeping Alaskan)
- Compact Hinoki Falsecypress
- Goldthread Falsecypress
- Clethra Shady Type
- Cornus Eastern Flowering Dogwood
- Cornus Grey Dogwood
- Cornus Kousa Dogwood
- Cornus Red Twig Variegated
- Cotinus (Royal Purple Smokebush)
- Contoneaster Horiz/Rockspray
- Crataegus (Winter King Hawthorn)
- Crytomeria (Japonica)
- Crytomeria (Yoshino)
- Cuprocyparis (Leyland Cypress)
- Cytisus (Scotch Broom)
- Erica (Mediterranean Pink Heath)
- Euonymus (Burning Bush)
- Euonymus (Emerald Gaiety)
- Euonymus (Emerald N Gold)
- Euonymus (Moonshadow)
- Euonymus (Siebold)
- Euonymus (Golden)
- Euonymus (Goldspot)
- Euonymus (Silver King)
- Euonymus (Manhattan)
- Fagus (European Beech)
- Fagus (Weeping European Beech)
- Fagus (Purple Fountain Beech)
- Fagus (River's Purple Beech)
- Forsythia (Border) Bright Yellow Flowers
- Fothergilla (Dwarf Gardenii)
- Fothergilla (Mount Airy)
- Fraxinus (White Ash)
- Ginkgo (Biloba)
- Gleditsia (Honeylocust)
- Hamamelis (Hybrid Wilch Hazel)
- Hibiscus (Rose of Sharon)
- Hydrangea (Annabelle)
- Hydrangea (Pee Gee)
- Hydrangea (Oakleaf)
- Ilex (English Holly)
- Ilex (Compact Japanese Holly)
- Ilex (Heller Japanese Holly)
- Ilex Mesdob (China Boy)
- Ilex Meserveae (English Blue Holly)
- Ilex Opaca (American Holly)
- Juniperus (Columnar Hetz)
- Juniperus (Gray Gleam)
- Juniperus (Moonglow)
- Juniperus (Pathfinder)
- Juniperus (Skyrocket)
- Juniperus (Wichita Blue)
- Juniperus (Blue Star)
- Juniperus (Sea Green)
- Juniperus (Blue Pacific)
- Juniperus (Bar Harbor)
- Juniperus (Plumosa Compacta)
- Juniperus (Wiltonii)
- Juniperus (Old Golden)
- Juniperus (Pfitzer)
- Juniperus (Procumben Nana)
- Koeleruteria (Golden Rain Tree)
- Leucothoe (Rainbow) White, Pink, Yellow
- Liriope (Lilyturf)
- Liriope (Variegated Lilyturf)

- Lonicera (Honeysuckle)
- Magnolia (Jane)
- Magnolia (Star)
- Magnolia (Saucer)
- Magnolia (Sweetbay)
- Malus (Crabapple) (Weeping Crabapple)
- Melaleuca (Dawn Redwood)
- Phyllostachys (Golden Bamboo)
- Picea (Norway Spruce)
- Picea (Bird's Nest Spruce)
- Picea (Weeping Norway Spruce)
- Picea (White Spruce)
- Picea (Dwarf Alberta Spruce)
- Picea (Weeping White Spruce)
- Picea (Serbian Spruce)
- Picea (Skylands Oriental Spruce)
- Picea (Colorado Spruce)
- Picea (Fat Albert Spruce)
- Picea (Globe Blue Spruce)
- Picea (Hoopsii Spruce)
- Picea (Montgomery Spruce)
- Peris Japonica Mountain Fire
- Pinus (Vanderwolf Pine)
- Pinus (Mugo Pine)
- Pinus (Eastern White Pine)
- Pinus (Weeping White Pine)
- Pinus (Dwarf Scots Pine)
- Pinus (Japanese Black Pine)
- Prunus (Purple Leaf Plum)
- Prunus (Thundercloud Plum)
- Prunus (Kwanzan Cherry)
- Prunus (Purple Leaf Sandcherry)
- Prunus (Otto Luyken Cherry Laurel)
- Prunus (Skip Cherry Laurel)
- Prunus (Weeping Higan Cherry)
- Prunus (Snow Fountain Cherry)
- Prunus (Autumn Flowering Higan Cherry)
- Prunus (Yoshino Cherry)
- Pseudotsuga (Douglas Fir)
- Pyacantha (Fire Thorn)
- Pyrus (Callery Pear)
- Pyrus (Aristocra)
- Pyrus (Bradford)
- Pyrus (Cleveland Select)
- Pyrus (Redspire)
- Quercus (Pineoak)
- Quercus (Northern Red Oak)
- Rhododendron (Azalea)
- Rhododendron (Maximum Rosebay)
- Rosa (Flower Carpet)
- Salix (Babylon Weeping Willow)
- Sciadopitys (Umbrella Pine)
- Spiraea (Little Princess)
- Spiraea (Magic Carpet)
- Stewartia (Japanese Stewartia)
- Syringa (Miss Kim Lilac)
- Syringa (Ivory Silk Tree Lilac)
- Syringa (Common Lilac)
- Taxus (Weeping English Yew)
- Taxus (Pyramidal Japanese Yew)
- Taxus (Dense Spreading Hybrid Yew)
- Taxus (Hatfield Yew)
- Taxus (Hicks Yew)
- Taxus (Dark American Arborvitae)
- Taxus (Pyramidal Arborvitae)
- Taxus (Dwarf Golden Arborvitae)
- Taxus (Emerald Green Arborvitae)
- Taxus (Globe Arborvitae)
- Tilia (Little Leaf Linden)
- Tsuga (Canadian Hemlock)
- Ulmus (Homestead Elm)
- Ulmus (Lace Bark Elm)
- Viburnum (Burkwood)
- Viburnum (Caricaphallum or Fragrant)
- Viburnum (Korean Spice)
- Viburnum (Arrowwood)
- Viburnum (Winterthur Withered)
- Viburnum (Blackhaw)
- Viburnum (Leather Leaf)
- Weigela (Old Fashion)
- Yucca (Adam's Needle)
- Yucca (Golden Sword)
- Yucca (Curve Leaf)
- Zelkova (Green Vase)
- Zelkova (Village Green)
- Annuals (Ageratum)
- Annuals (Alyssum)
- Annuals (Begonia Whiskey)
- Annuals (Dianthus Raspberry Parfait)
- Annuals (Dusty Miller)
- Annuals (Geranium)
- Annuals (Impatiens)
- Annuals (Marigold)
- Annuals (Petunia)



Plant Legend

	GS	1	Picea Pungens	Blue Globe Spruce	36"
	RM	3	Acer Rubrum	Red Maple	2.5" B+B
	BX	17	Buxus Sempervirens	American Boxwood	36" B+B
	AND	7	Pieris Japonica	Mountain Fire Andromeda	36" B+B



Tax Lot 74.16-1-3.21