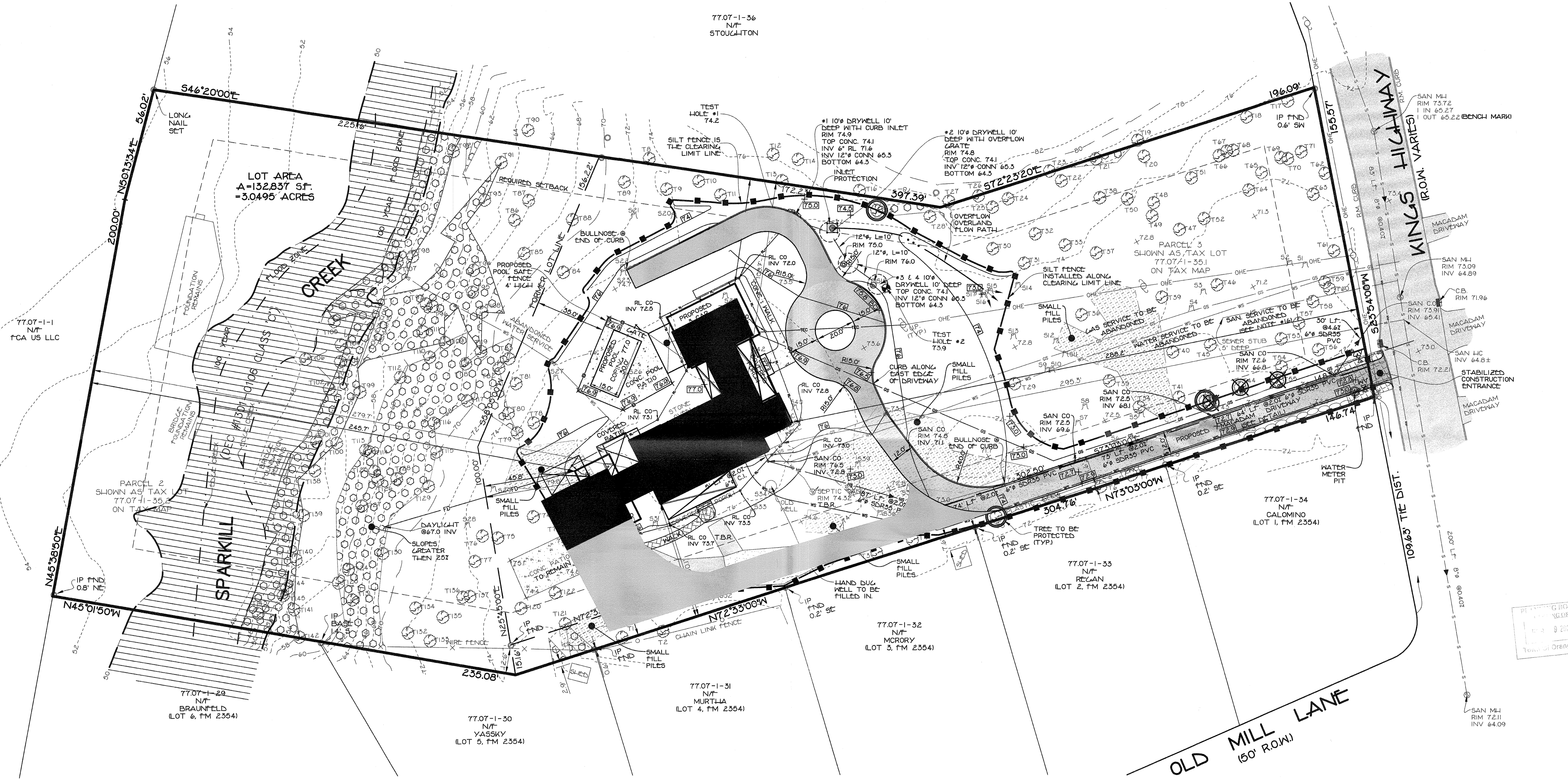


77.07-1-36
N/F
STOUGHTON



LOT AREA
A=132,837 SF.
=3.0495 ACRES

CREEK

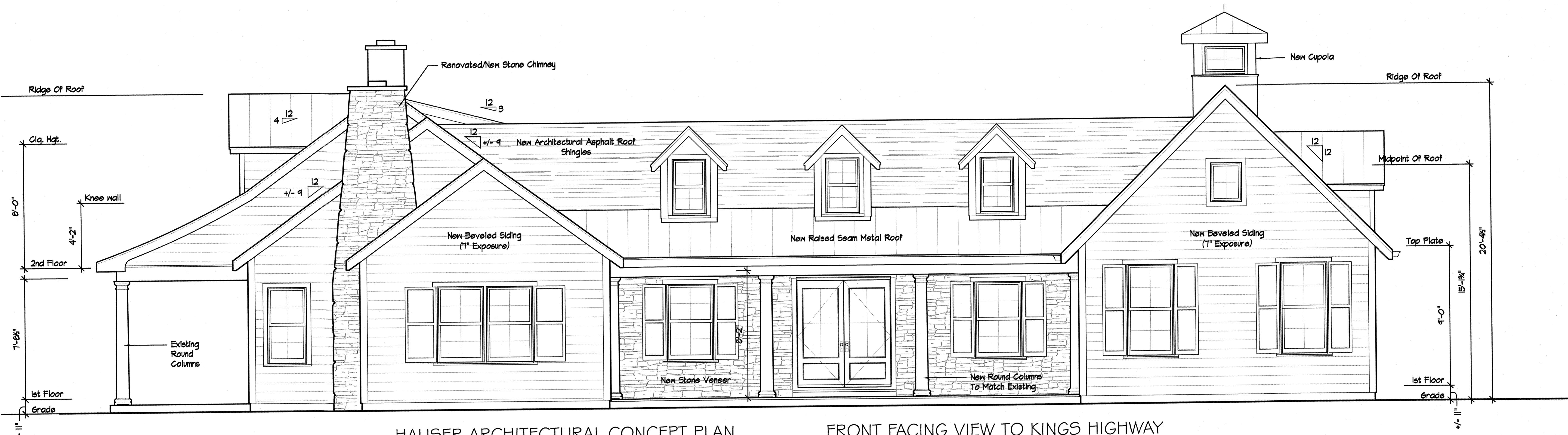
SPARKILL

KINGS HIGHWAY
(R.O.W. VARIES)

OLD MILL LANE
(50' R.O.W.)

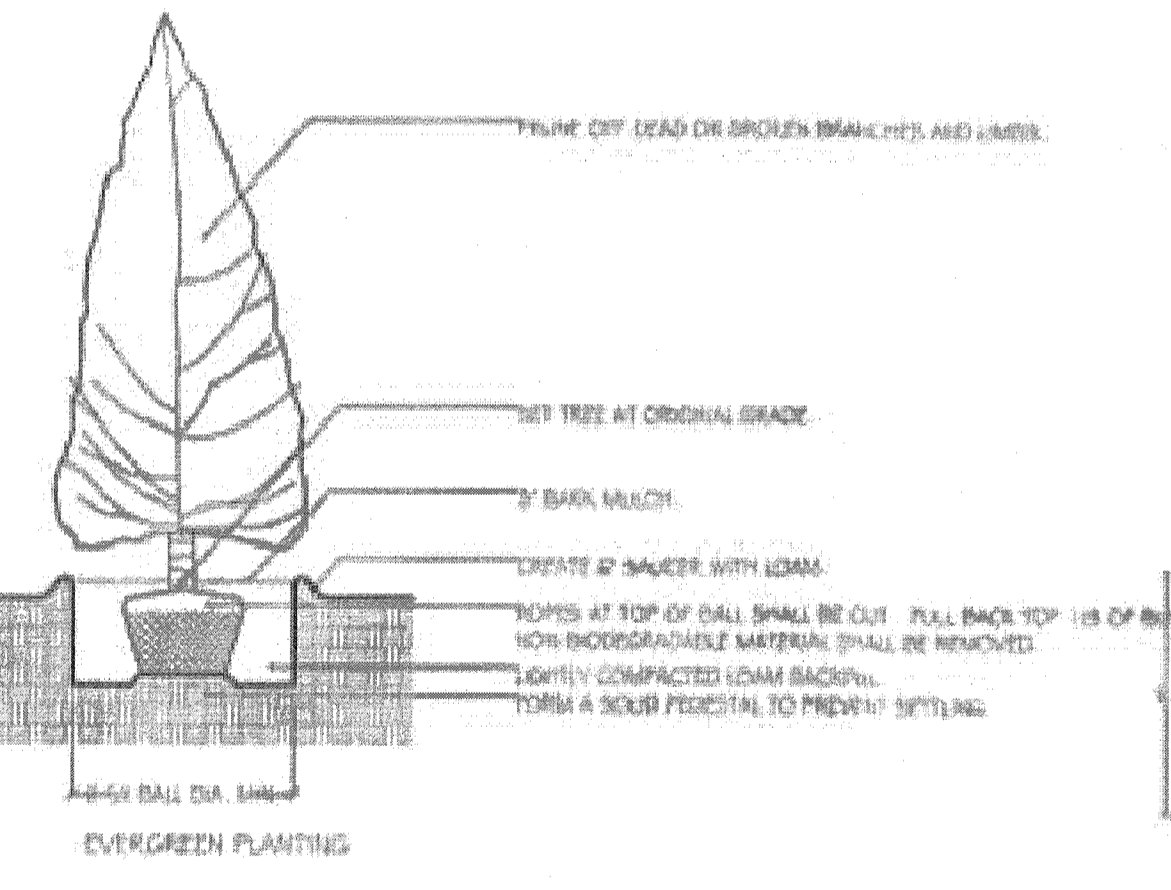
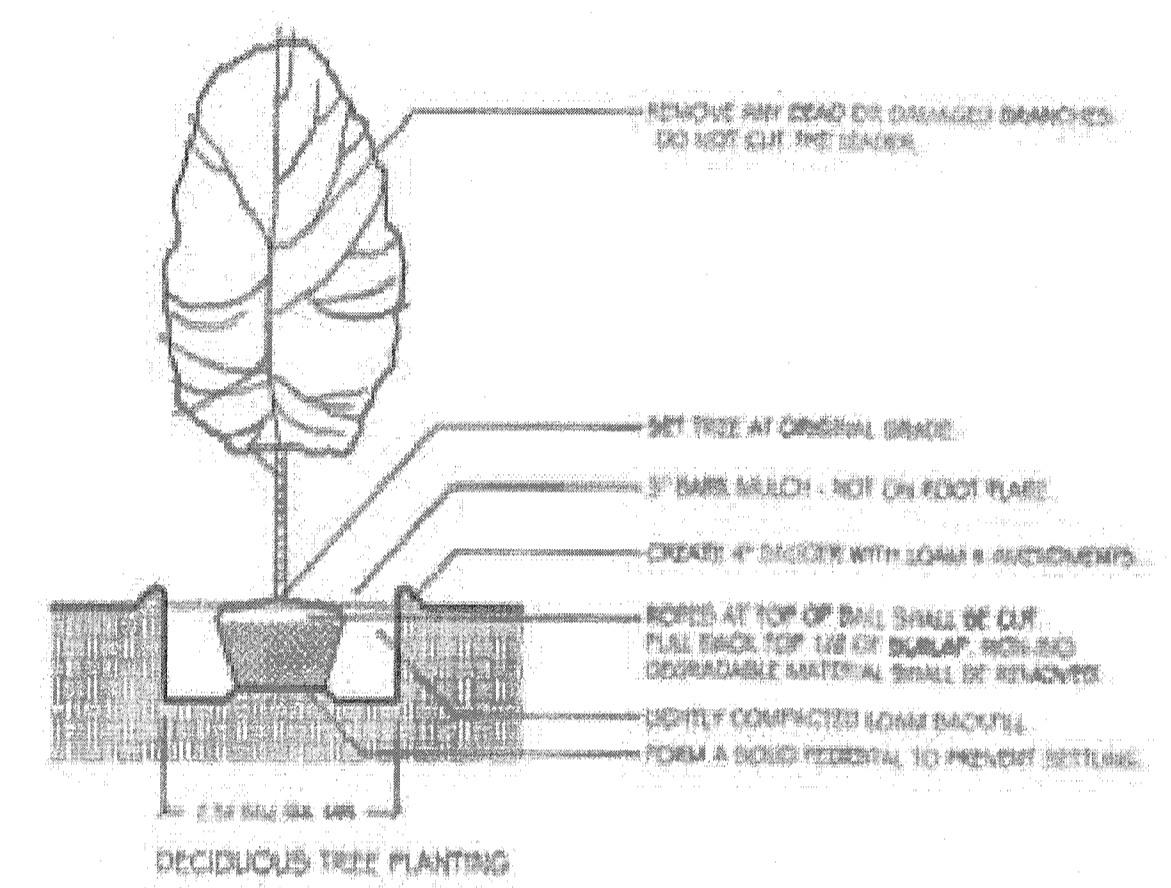
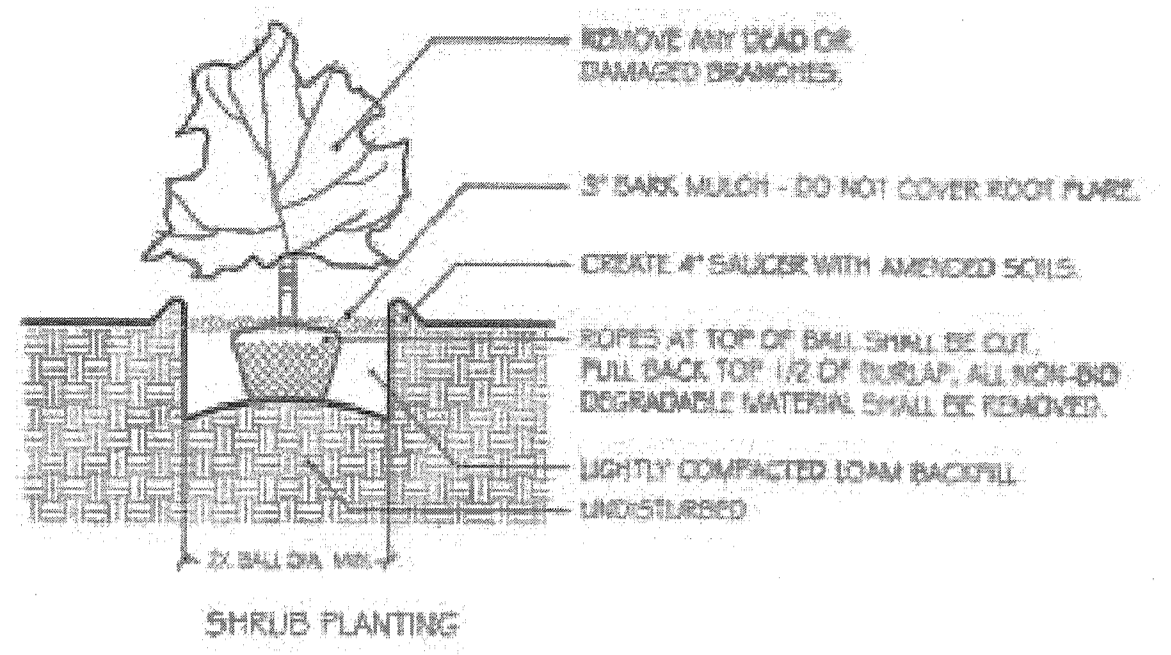
Hauser Concept Plan January 21, 2022
200 KINGS HIGHWAY
LOCATED IN
TOWN OF ORANGETOWN
ROCKLAND COUNTY, NEW YORK

PLANNING BOARD
APPROVED
1-31-2022
Town of Orangetown



HAUSER ARCHITECTURAL CONCEPT PLAN
 200 KINGS HIGHWAY, TAPPAN, NY

FRONT FACING VIEW TO KINGS HIGHWAY
 JANUARY 21, 2022



PLANTING SPECIFICATIONS:

GENERAL: All plants, trees, and shrubs shall meet the specifications for "plant material" as per the American Standard for Nursery Stock. The landscape architect reserves the right to inspect all plants prior to shipping and installation. There are to be no substitutions of the plants without the consent of the landscape architect.

PLANTING: All plants shall be planted in pits two times the diameter of the root ball or container. Plant height should be placed at or slightly above previous grade. Pull back burlap from top of ball and cut wire on tree basket. Ensure that the burlap is not exposed above grade because of water loss. Staking and guying shall be used only when necessary. When the method is used, care should be taken to protect the tree bark and wires should be removed as soon as possible.

MULCHING: All planting beds (EXCEPT GROUNDCOVER) shall be mulched with three inches of shredded bark to conserve water and keep roots covered during initial growth stage. Do not place mulch heavily around crown of plants.

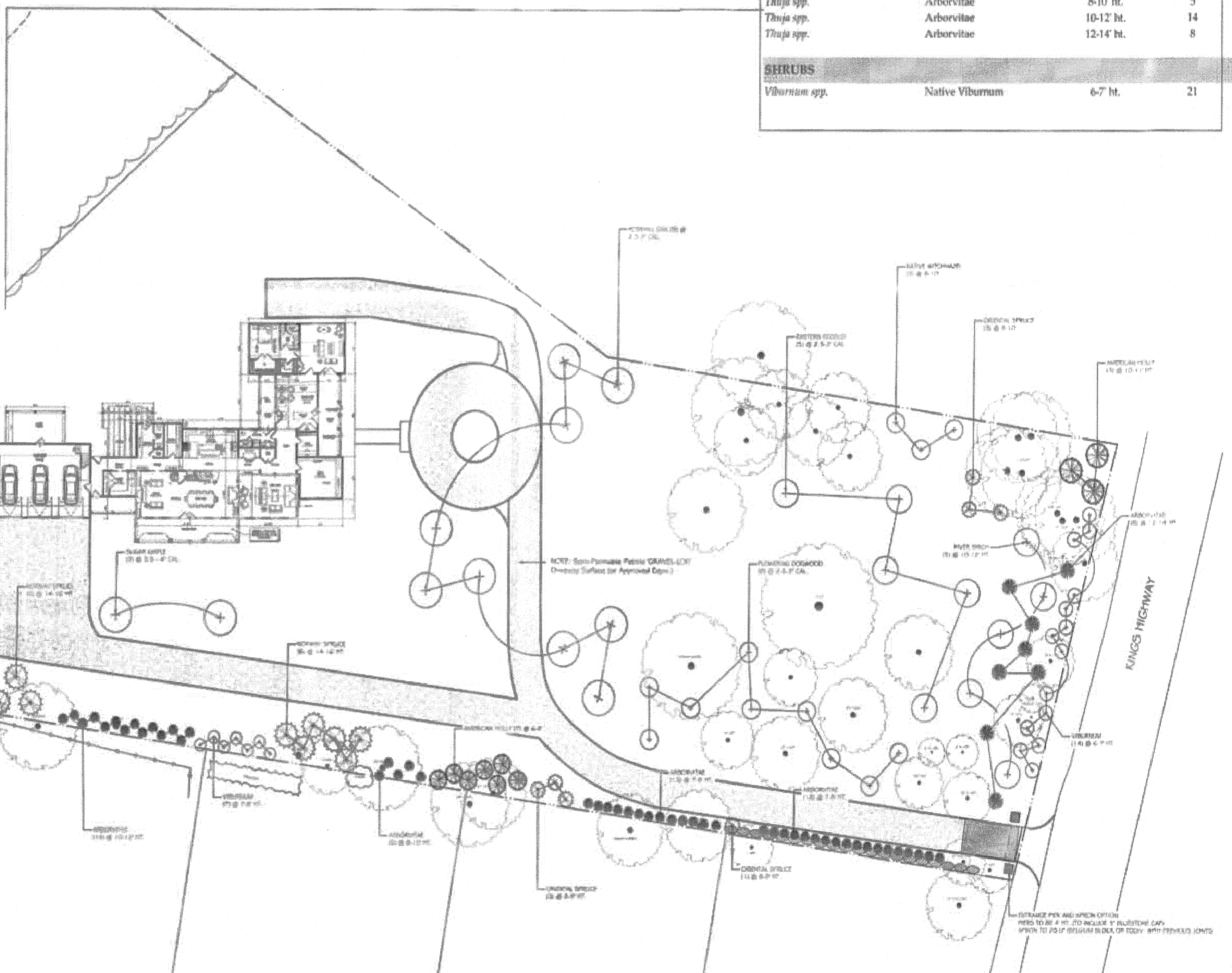
WINTER CARE: All trees and shrubs shall be sprayed with an anti-desiccant the first November after planting.

WATERING: All plants shall be watered by the contractor during the initial growth stage. Trees shall be heavily watered several times during the first month after planting and then regularly for the next two summers.

PLANT GUARANTEE: Contractor shall guarantee all newly installed plants for one-year provided that they are given proper watering/care and contractor is notified of unhealthy stressed plants immediately.

Plant Material List

Scientific Name	Common Name	Size	Qty.
TREES			
<i>Acer saccharum</i>	Sugar Maple	3.5-4" cal.	2
<i>Betula spp.</i>	River Birch	10-12' ht.	5
<i>Cercis canadensis</i>	Eastern Redbud	2.5-3" cal.	5
<i>Cornus spp.</i>	Flowering Dogwood	2.5-3" cal.	9
<i>Hammelis spp.</i>	Witchhazel	8-10' ht.	3
<i>Ilex opaca</i>	American Holly	6-8' ht.	13
<i>Ilex opaca</i>	American Holly	10-11' ht.	3
<i>Picea abies</i>	Norway Spruce	14-16' ht.	9
<i>Picea orientalis</i>	Oriental Spruce	8-9' ht.	7
<i>Picea orientalis</i>	Oriental Spruce	8-9' ht.	1
<i>Picea orientalis</i>	Oriental Spruce	8-9' ht.	3
<i>Prunus autumnalis</i>	Fall Blooming Cherry	3.5-4" cal.	4
<i>Quercus robur x bicolor 'Roschill'</i>	Rosehill Oak	2.5-3" cal.	9
<i>Thuja spp.</i>	Arborvitae	7-8' ht.	31
<i>Thuja spp.</i>	Arborvitae	8-10' ht.	5
<i>Thuja spp.</i>	Arborvitae	10-12' ht.	14
<i>Thuja spp.</i>	Arborvitae	12-14' ht.	8
SHRUBS			
<i>Viburnum spp.</i>	Native Viburnum	6-7' ht.	21



PLANTING NOTE:

- CONTACT CALL BEFORE YOU DIG (B I I) ONE WEEK PRIOR TO COMMENCEMENT OF WORK.
- ALL PLANTINGS ARE SUBJECT TO REGIONAL AVAILABILITY AND OPTIMAL SEASONAL INSTALLATION.
- THERE ARE (2 +/-) INVASIVE NORWAY MAPLES IN FAIR CONDITION AND (1) ASH TREE, (1) TULIP THAT ARE IN QUESTIONABLE CONDITION THAT MAY NEED TO BE REMOVED PRIOR TO NEW PLANT INSTALLATIONS. TBD BY LICENSED ARBORIST.

HAUSER LANDSCAPE CONCEPT PLAN
 FRONT FACING VIEW TO KINGS HIGHWAY
 200 KINGS HIGHWAY, TAPPAN, NY
 JANUARY 21, 2022