

Colliers

Engineering
& Design

www.colliersengineering.com

Copyright © 2021, Colliers Engineering & Design. All Rights Reserved. This drawing and all the information contained herein is authorized for use only by the party for whom the services were contracted or to whom it is certified. This drawing may not be copied, reused, disclosed, distributed or relied upon for any other purpose without the express written consent of Colliers Engineering & Design.

Doing Business as **MASER**

811 PROTECT YOURSELF
ALL STATES REQUIRE NOTIFICATION OF
EXCAVATORS, DESIGNERS, OR ANY PERSON
PREPARING TO DISTURB THE EARTH'S
SURFACE ANYWHERE IN ANY STATE
Know what's below.
Call before you dig.
FOR STATE SPECIFIC DIRECT PHONE NUMBERS
VISIT: WWW.CALL811.COM

REV	DATE	DESCRIPTION

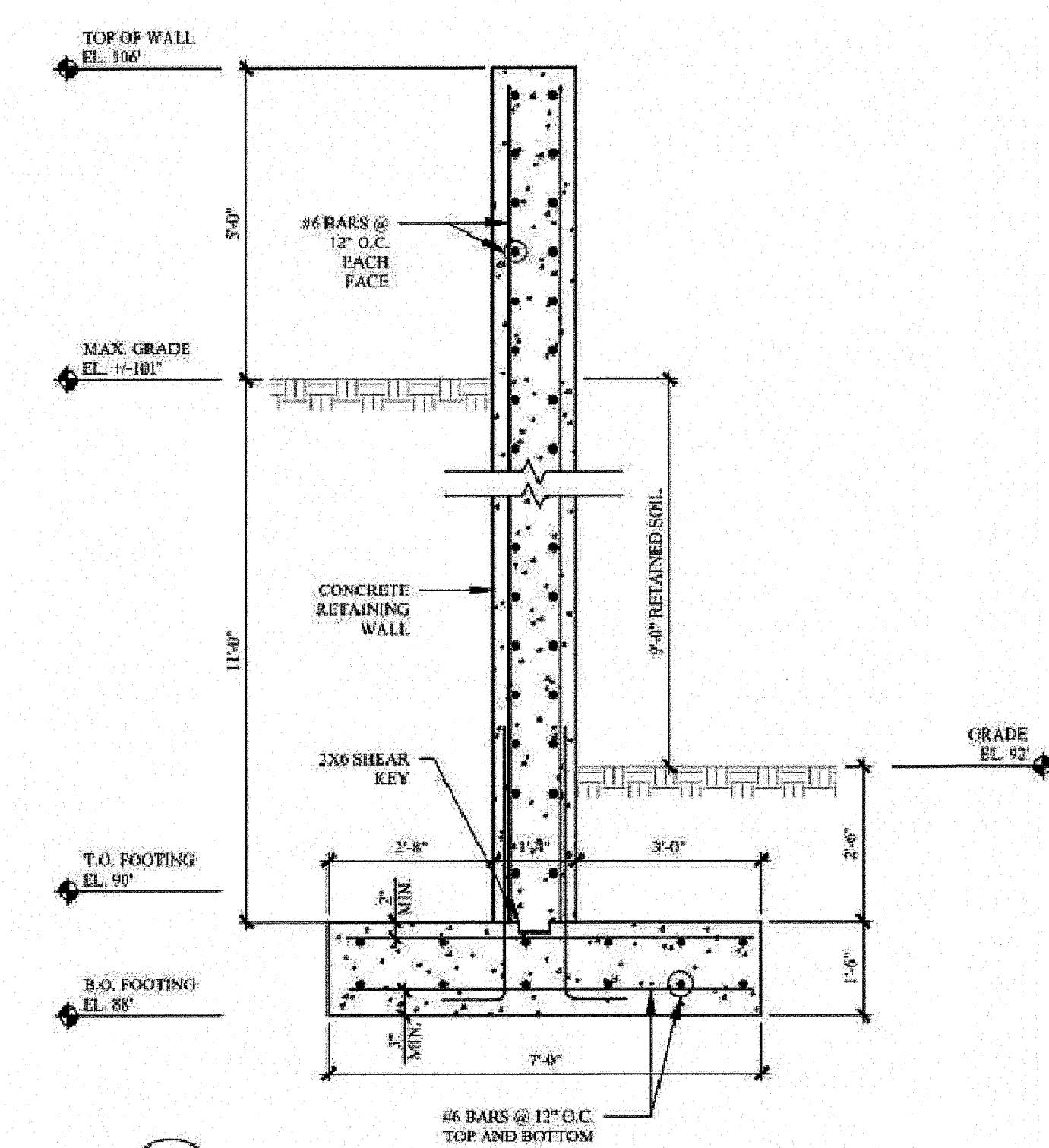
RECEIVED
NOV 9 3 2021
TOWN ENGINEERING
J. 364y

RETAINING WALL PLAN
FOR
ROCKLAND GAA
SECTION 73.12
BLOCK 1
LOT 1
TOWN OF ORANGETOWN
ROCKLAND COUNTY
NEW YORK

Colliers 50 Chestnut Ridge Road, Suite 101, Montvale, NJ 07645
Engineering & Design Phone: 945.352.0411
COLLIERS ENGINEERING & DESIGN, P.C.
DOING BUSINESS AS MASER CONSULTING ENGINEERS & LAND SURVEYING

SCALE: AS SHOWN DATE: 10/22/2021 DRAWN BY: DJG CHECKED BY: JBC
PROJECT NUMBER: 20005630A DRAWING NAME: C-LAY1

SHEET NUMBER: 1 of 1
RETAINING WALL PLAN



- NOTES:
1. RETAINING WALL DETAIL BY OTHERS. REFER TO STRUCTURAL PLANS FOR 160 OLD ORANBURG ROAD, PREPARED BY DRPILLA CONSULTING ENGINEERS, DATED 4/23/2021.
 2. ELEVATIONS SHOWN ARE APPROXIMATE.

RETAINING WALL SECTION DETAIL
N.T.S.

EXISTING	LEGEND	PROPOSED
$\frac{12+00}{12+00}$	TRAVERSE LINE, CENTER LINE OR BASELINE (LABEL AS SUCH)	$\frac{12+00}{13+00}$
---	RIGHT OF WAY LINE	---
---	PROPERTY LINE	---
---	EDGE OF PAVEMENT	---
FACE	CURB	FACE
BACK	DEPRESSED CURB	BACK
---	SIDEWALK	---
---	FENCES	X-X
---	TREELINE	---
---	ROADWAY SIGNS	---
---	WETLAND LINE	---
---	MUNICIPAL BOUNDARY LINE	---
---	STALL COUNT	(10)
---	ADA ACCESSIBLE STALL	(P)
---	DEPRESSED CURB AND ADA RAMP	HC
---	DIRECTION OF TRAFFIC FLOW	→

