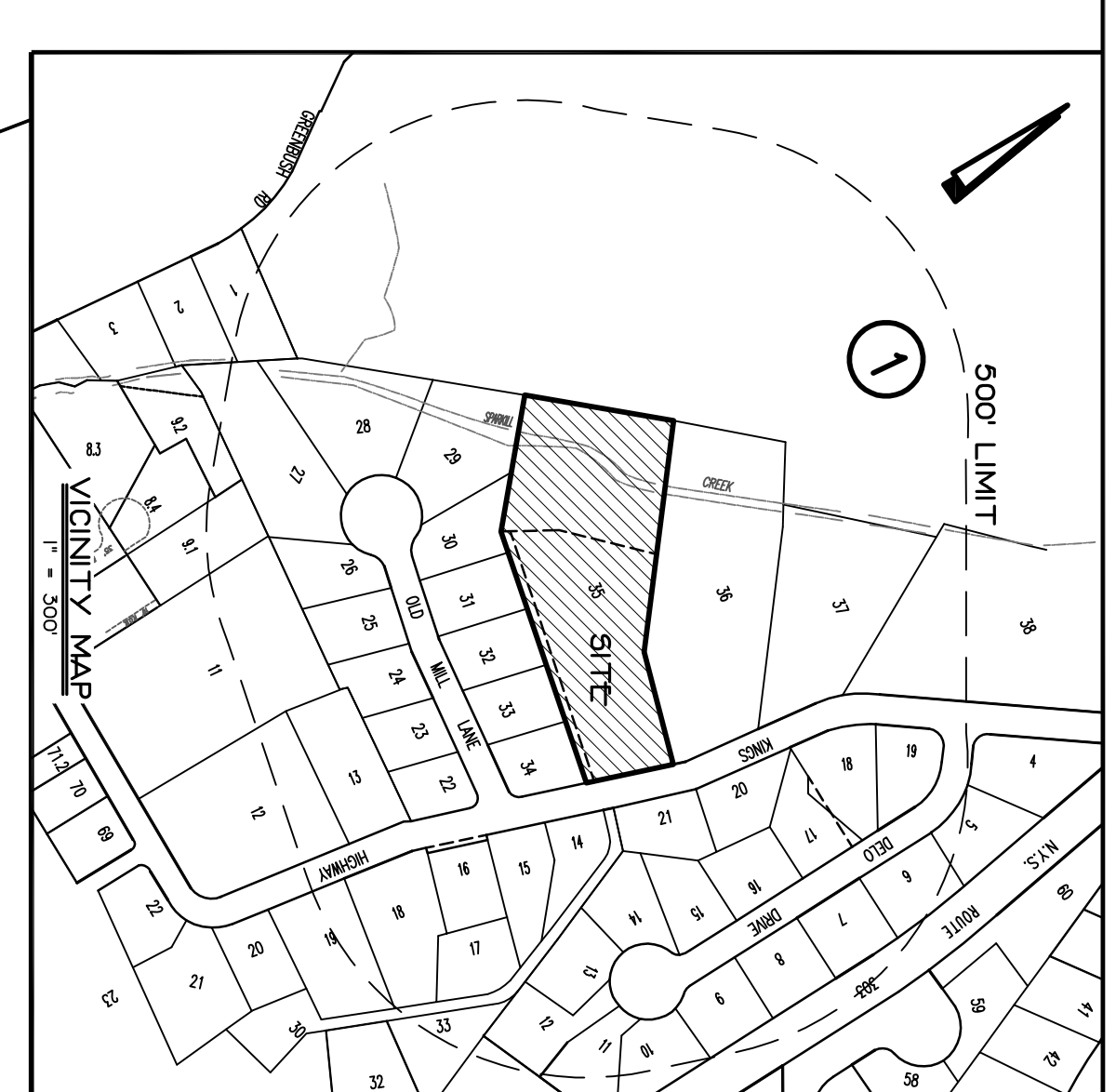
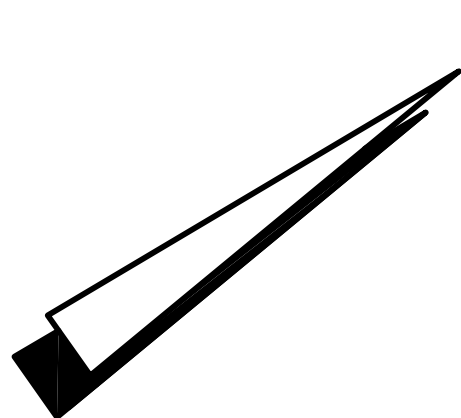


REFERENCES:  
 A MAP ENTITLED "OLD MILL PARK PREPARED BY WILLIAM A. YUDA, P.E. AND FILED IN THE ROCKLAND COUNTY CLERK'S OFFICE ON JUNE 7, 1995 AS MAP NUMBER 2304.  
 L. 448, P. 583 P.01  
 L. 448, P. 583 P.02  
 L. 448, P. 583 P.03  
 L. 448, P. 583 P.04  
 L. 448, P. 583 P.05  
 L. 448, P. 583 P.06  
 L. 448, P. 583 P.07  
 L. 448, P. 583 P.08  
 L. 448, P. 583 P.09  
 L. 448, P. 583 P.10  
 L. 448, P. 583 P.11  
 L. 448, P. 583 P.12  
 L. 448, P. 583 P.13  
 L. 448, P. 583 P.14  
 L. 448, P. 583 P.15  
 L. 448, P. 583 P.16  
 L. 448, P. 583 P.17  
 L. 448, P. 583 P.18  
 L. 448, P. 583 P.19  
 L. 448, P. 583 P.20  
 L. 448, P. 583 P.21  
 L. 448, P. 583 P.22  
 L. 448, P. 583 P.23  
 L. 448, P. 583 P.24  
 L. 448, P. 583 P.25  
 L. 448, P. 583 P.26  
 L. 448, P. 583 P.27  
 L. 448, P. 583 P.28  
 L. 448, P. 583 P.29  
 L. 448, P. 583 P.30  
 L. 448, P. 583 P.31  
 L. 448, P. 583 P.32  
 L. 448, P. 583 P.33  
 L. 448, P. 583 P.34  
 L. 448, P. 583 P.35  
 L. 448, P. 583 P.36  
 L. 448, P. 583 P.37  
 L. 448, P. 583 P.38  
 L. 448, P. 583 P.39  
 L. 448, P. 583 P.40  
 L. 448, P. 583 P.41  
 L. 448, P. 583 P.42  
 L. 448, P. 583 P.43  
 L. 448, P. 583 P.44  
 L. 448, P. 583 P.45  
 L. 448, P. 583 P.46  
 L. 448, P. 583 P.47  
 L. 448, P. 583 P.48  
 L. 448, P. 583 P.49  
 L. 448, P. 583 P.50  
 L. 448, P. 583 P.51  
 L. 448, P. 583 P.52  
 L. 448, P. 583 P.53  
 L. 448, P. 583 P.54  
 L. 448, P. 583 P.55  
 L. 448, P. 583 P.56  
 L. 448, P. 583 P.57  
 L. 448, P. 583 P.58  
 L. 448, P. 583 P.59  
 L. 448, P. 583 P.60  
 L. 448, P. 583 P.61  
 L. 448, P. 583 P.62  
 L. 448, P. 583 P.63  
 L. 448, P. 583 P.64  
 L. 448, P. 583 P.65  
 L. 448, P. 583 P.66  
 L. 448, P. 583 P.67  
 L. 448, P. 583 P.68  
 L. 448, P. 583 P.69  
 L. 448, P. 583 P.70  
 L. 448, P. 583 P.71  
 L. 448, P. 583 P.72  
 L. 448, P. 583 P.73  
 L. 448, P. 583 P.74  
 L. 448, P. 583 P.75  
 L. 448, P. 583 P.76  
 L. 448, P. 583 P.77  
 L. 448, P. 583 P.78  
 L. 448, P. 583 P.79  
 L. 448, P. 583 P.80  
 L. 448, P. 583 P.81  
 L. 448, P. 583 P.82  
 L. 448, P. 583 P.83  
 L. 448, P. 583 P.84  
 L. 448, P. 583 P.85  
 L. 448, P. 583 P.86  
 L. 448, P. 583 P.87  
 L. 448, P. 583 P.88  
 L. 448, P. 583 P.89  
 L. 448, P. 583 P.90  
 L. 448, P. 583 P.91  
 L. 448, P. 583 P.92  
 L. 448, P. 583 P.93  
 L. 448, P. 583 P.94  
 L. 448, P. 583 P.95  
 L. 448, P. 583 P.96  
 L. 448, P. 583 P.97  
 L. 448, P. 583 P.98  
 L. 448, P. 583 P.99  
 L. 448, P. 583 P.100

DATE: 02/02/04  
 REFERENCE: BENCH MARK MANHOLE  
 INVERT ELEVATION 62.22  
 INVERT ELEVATION 62.22  
 INVERT ELEVATION 62.22  
 INFORMATION TAKEN FROM SUBDIVISION  
 INFORMATION SHEET DEPARTMENT  
 OF ENVIRONMENTAL CONSERVATION  
 FOR MEMORISTIN DATE 02/02/04

DEEP HOLE AND PERC. DATA:

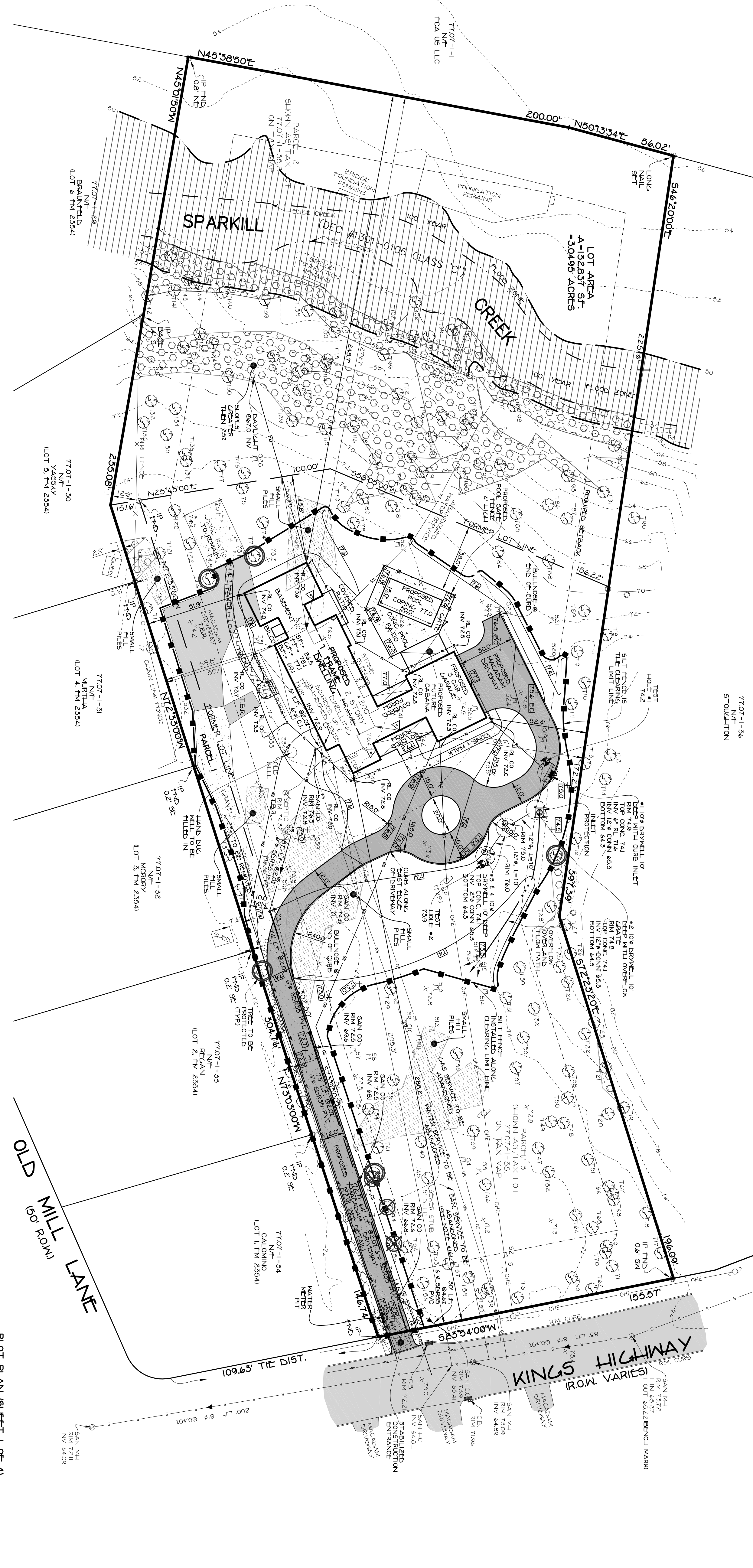
TEST HOLE TP #1  
 EX. ELEV. 74.2 PERC. FOR 1 TESTED AT EL. 60.2 : 38 SEC - PASS.  
 BOT. HOLE 60.2  
 WATER EL. NONE  
 TEST HOLE TP #2  
 EX. ELEV. 73.9 PERC. FOR 2 TESTED AT EL. 64.9 : 13 MIN 20 SEC - PASS.  
 BOT. HOLE 60.9  
 WATER EL. NONE  
 \*REFER TO DRAINAGE REPORT DATED XXX  
 FOR ADDITIONAL REFERENCE DETAIL.



TREE LIST		TREE LIST	
NO.	DIAMETER	NO.	DIAMETER
T1	12"	T74	24"
T2	36"	T75	40"
T3	28"	T76	40"
T4	28"	T77	40"
T5	16" TRIN	T78	40"
T6	36"	T79	20"
T7	30"	T80	14"
T8	30"	T81	10"
T9	30"	T82	10"
T10	8"	T83	12"
T11	20"	T84	8"
T12	24"	T85	24"
T13	14"	T86	18"
T14	28"	T87	18"
T15	16"	T88	18"
T16	24"	T89	18"
T17	24"	T90	24"
T18	16"	T91	50"
T19	12"	T92	36"
T20	12"	T93	36"
T21	28"	T94	10"
T22	36"	T95	10"
T23	50"	T96	10"
T24	12"	T97	18" TRIN
T25	12"	T98	18"
T26	40"	T99	18"
T27	40"	T100	36"
T28	22"	T101	24"
T29	40"	T102	24"
T30	20"	T103	10"
T31	10"	T104	14"
T32	20"	T105	14"
T33	40"	T106	14"
T34	26"	T107	16"
T35	18"	T108	20"
T36	18"	T109	20"
T37	24"	T110	10"
T38	10"	T111	12"
T39	46"	T112	10"
T40	20"	T113	36"
T41	20"	T114	12"
T42	20"	T115	40"
T43	8"	T116	40"
T44	36"	T117	16"
T45	50"	T118	26"
T46	20"	T119	20"
T47	12"	T120	20"
T48	12"	T121	20"
T49	12"	T122	30"
T50	26"	T123	22"
T51	8"	T124	10"
T52	12"	T125	24"
T53	14"	T126	14"
T54	28"	T127	24"
T55	16"	T128	10"
T56	30"	T129	54"
T57	30"	T130	24"
T58	12"	T131	10"
T59	12"	T132	10"
T60	10"	T133	40"
T61	16"	T134	40"
T62	40"	T135	40"
T63	14"	T136	14"
T64	16"	T137	10"
T65	16"	T138	10"
T66	36"	T139	54"
T67	30"	T140	24"
T68	12"	T141	30"
T69	12"	T142	24"
T70	28"	T143	24"
T71	28"	T144	20"
T72	24"	T145	20"
T73	20"	T146	20"

STUMP LIST	
NO.	DIAMETER
S1	14"
S2	12"
S3	14"
S4	14"
S5	18"
S6	18"
S7	12"
S8	12"
S9	12"
S10	12"
S11	12"
S12	12"
S13	16"
S14	36"
S15	12"
S16	12"
S17	12"
S18	12"
S19	24"
S20	20"
S21	20"
S22	24"
S23	10"
S24	20"
S25	36"
S26	36"
S27	20"
S28	20"
S29	20"
S30	16"
S31	16"
S32	36"
S33	36"
S34	14" TRIN
S35	24"
S36	24"
S37	16"
S38	16"
S39	24"
S40	12" TRIN
S41	12"
S42	30"

LEGEND	
---	PROPERTY LINE
---	BUILDING SETBACK LINE
---	SANITARY SEWER
---	SAN SEWER MANHOLE
---	CLEAN-OUT
---	WATER MAIN
---	WATER SERVICE
---	WATER VALVE
---	WATER METER
---	CAS VALVE
---	DRAIN PIPE
---	CATCH BASIN
---	R.I. LEADER
---	UTILITY POLE
---	UNDERGROUND ELECTRIC
---	OVERHEAD ELECTRIC
---	10' CONTROL INTERVAL
---	2' CONTROL INTERVAL
---	SPOT CASSE



BULK TABLE

ZONE	MINIMUM LOT AREA	MINIMUM FRONT YARD SETBACK	MINIMUM SIDE YARD SETBACK	MINIMUM REAR YARD SETBACK	MINIMUM FRONT SETBACK	MINIMUM REAR SETBACK	MINIMUM MAXIMUM HEIGHT
R-1-S	15000	100	30	20	50	35	30
EXISTING	125004	150.9	295	50	156	279	30
PROPOSED	125004	150.9	288	50	102	245	30

NET LOT AREA CALCULATION

50% DEDUCTION FOR 100 YEAR FLOOD PLAIN  
 15164 SF. / 30% = 17882 SF.  
 50% DEDUCTION FOR SLOPE AREAS OVER 2%  
 9202 SF. / 50% = 4791 SF.  
 12885 SF. - 12333 SF. = 120204 SF.  
 12885 SF. - 12333 SF. = 120204 SF.

PERVIOUS SURFACE

EXISTING 9126 SF.  
 PROPOSED 16079 SF.  
 INCREASE 6952 SF.

AREA OF DISTURBANCE

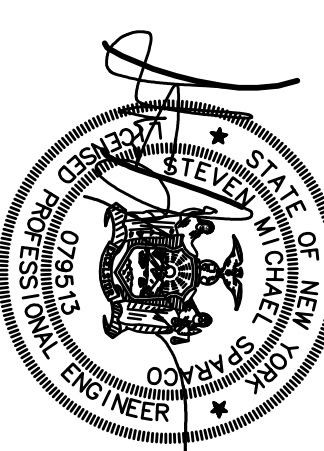
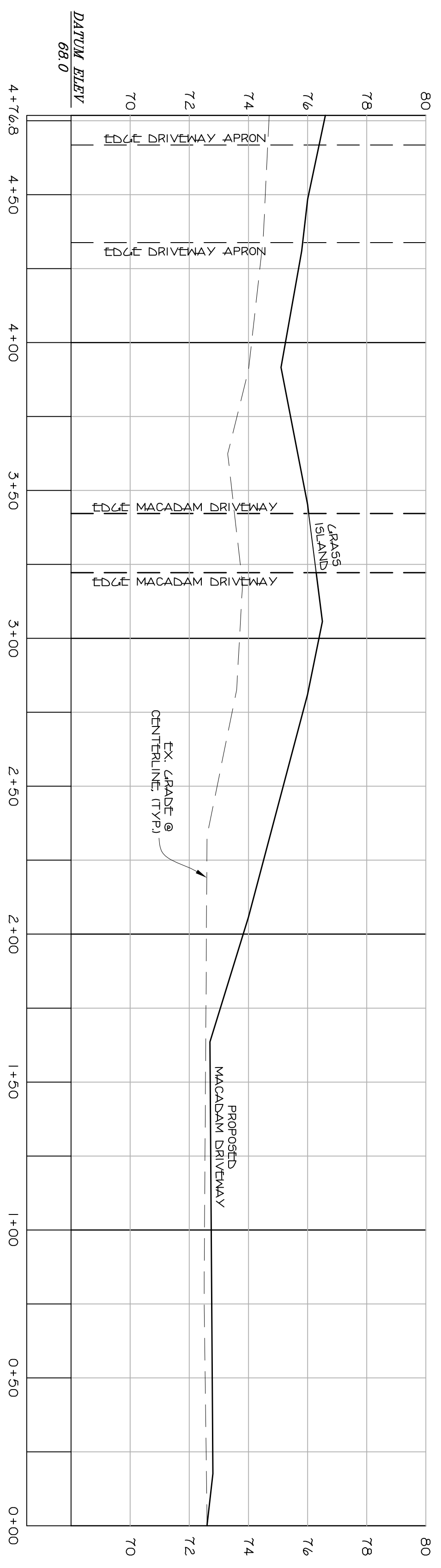
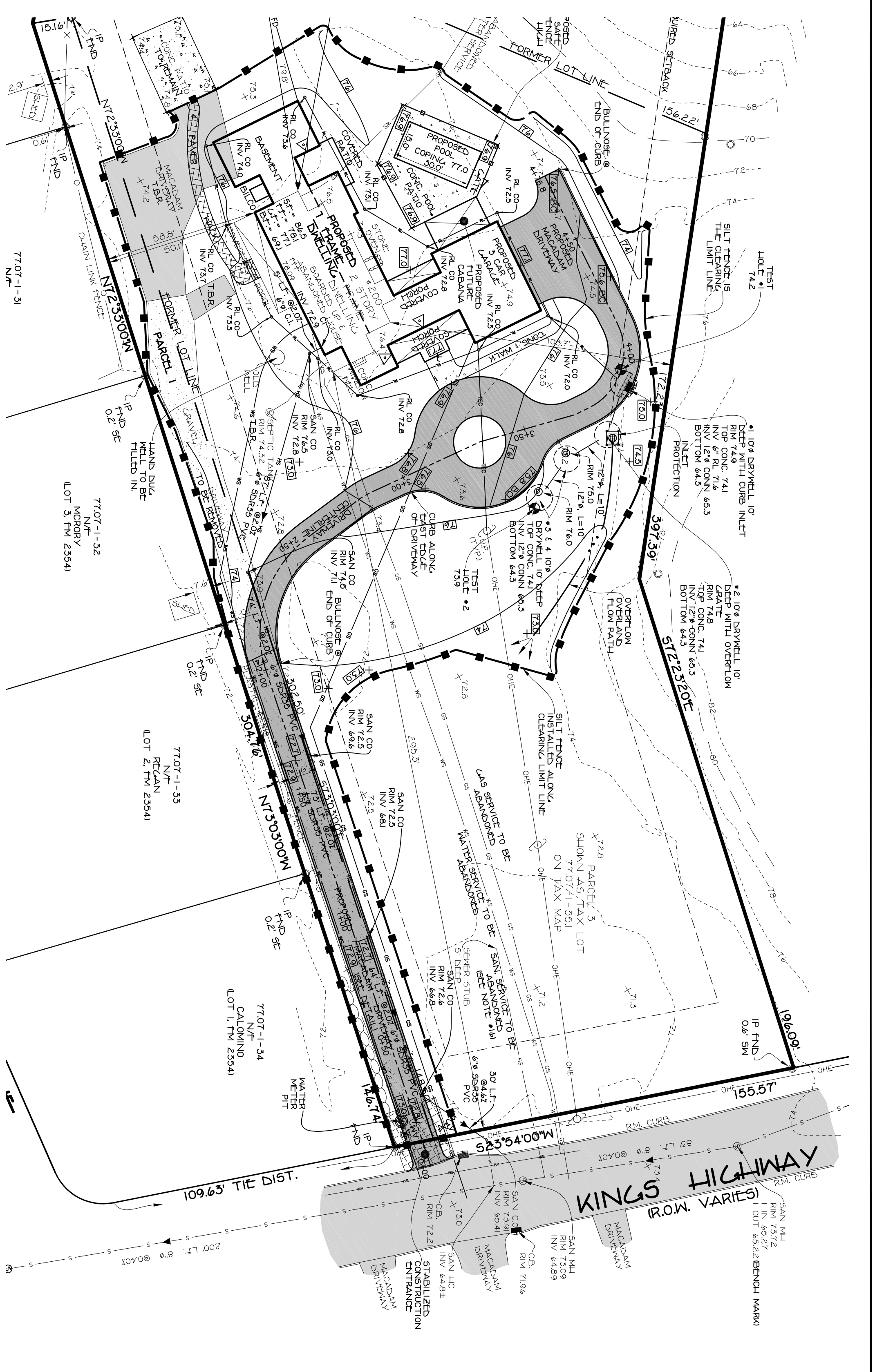
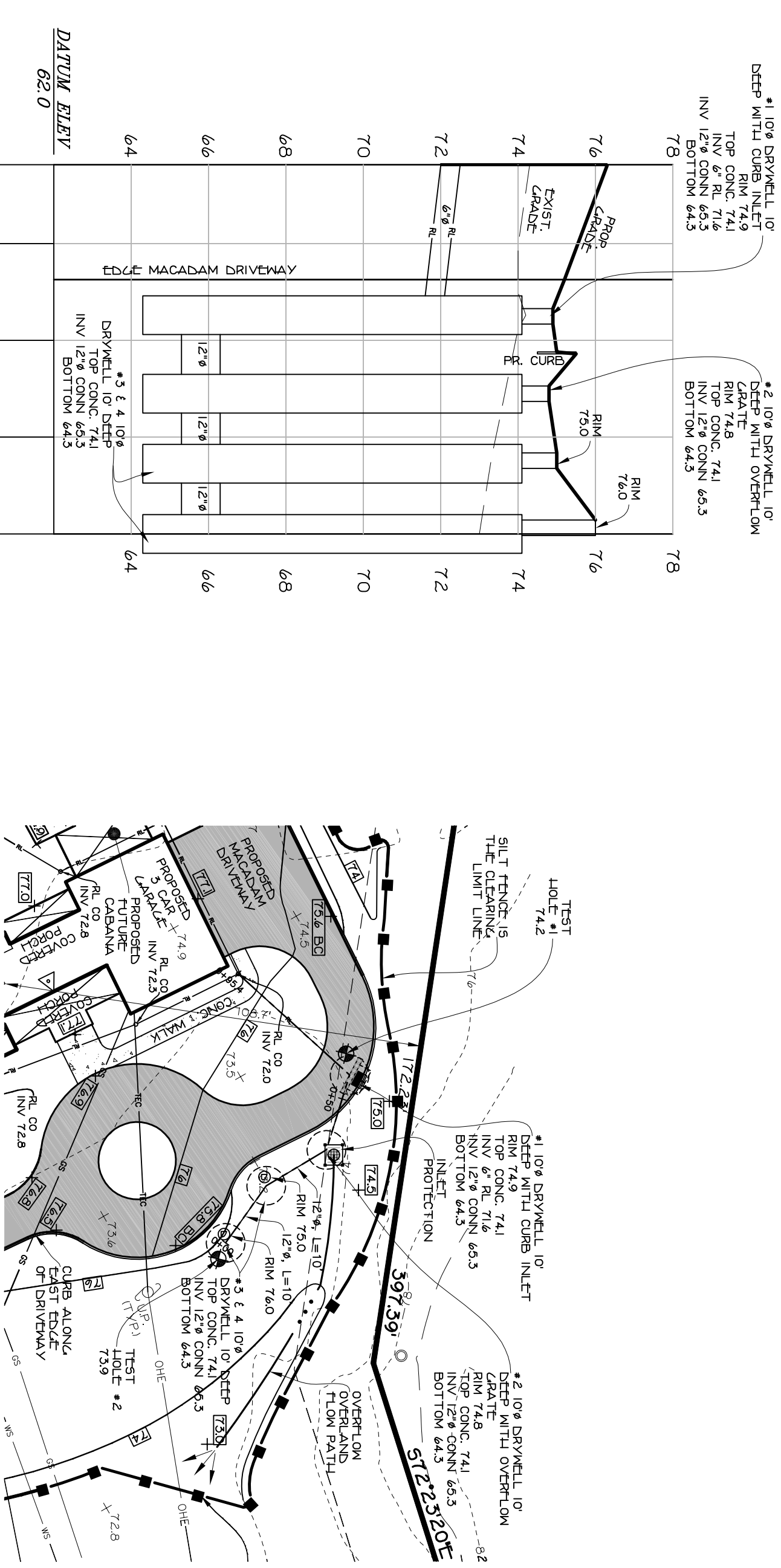
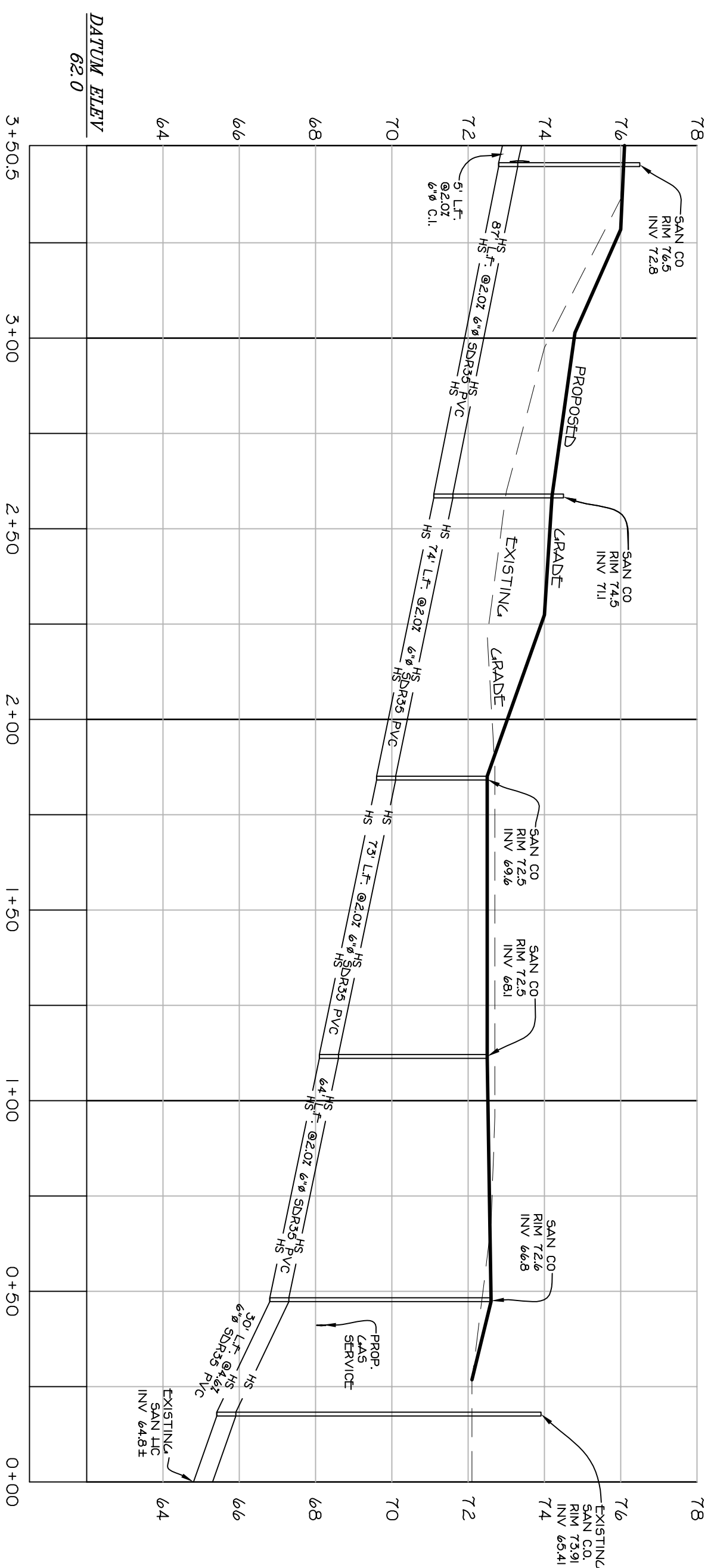
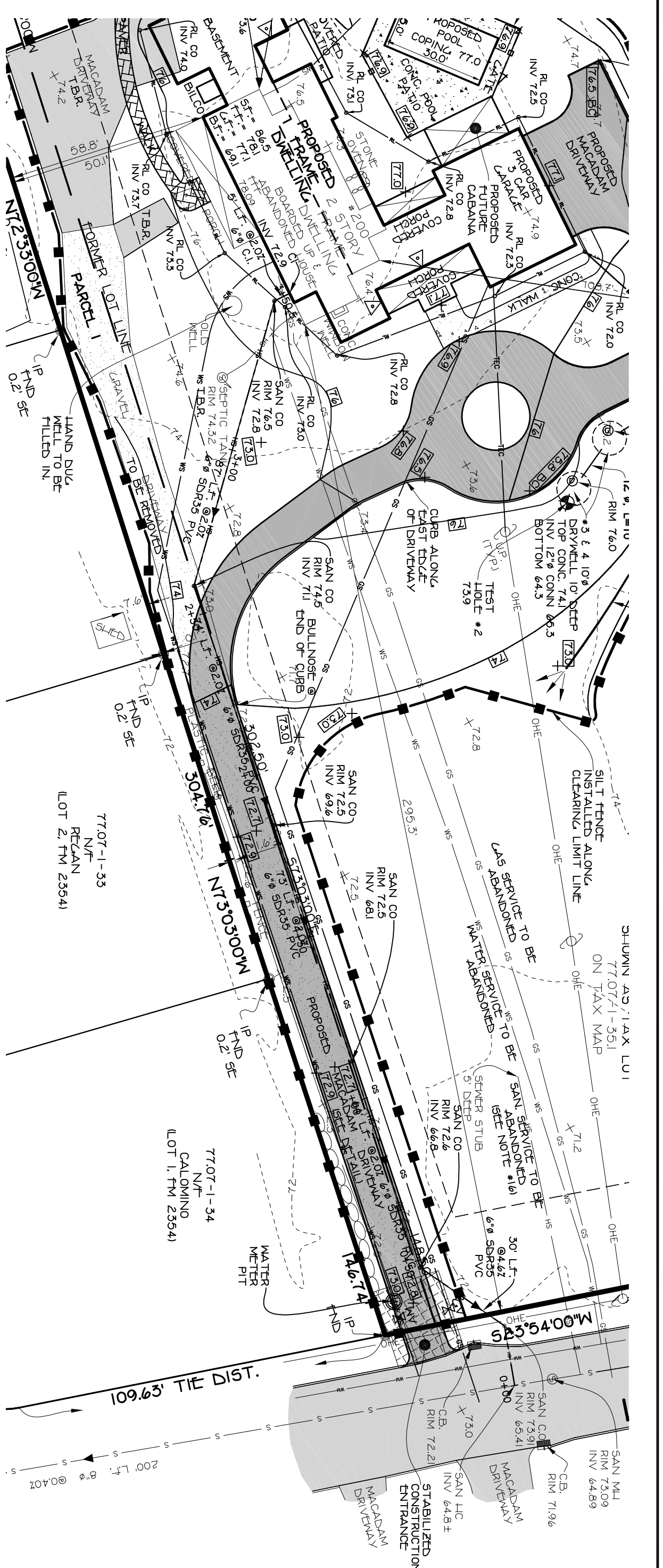
43084 SF.

REV. STUMP & PILE LOCATIONS - 12/02/2021

REV. PER COMMENTS - 12/14/2021

SPARACO & YOUNGBLOND, PLLC

CIVIL ENGINEERING & LAND SURVEYING  
 18 NORTH MAIN STREET  
 HARRISBURG, NY 13206  
 TEL: (609) 782-8943  
 FAX: (609) 782-8943  
 WWW.SPACOSURVEYS.COM



STEVEN M. SPARACO, P.E.  
18 NORTH MAIN STREET  
HARRISBURG, NY 13343  
(649) 782-8543

REV. STAMP & PILE LOCATIONS - 12/02/2021  
REV. PER COMMENTS - 12/14/2021

**SPARACO & YOUNGBLOND, PLLC**  
CIVIL ENGINEERING • LAND SURVEYING  
SITE PLANNING

18 NORTH MAIN STREET  
HARRISBURG, NY 13343  
TEL: (649) 782-8543  
WWW.SPACOSURVEYS.COM

PROFILES ISHEET 2 OF 4)  
FOR  
**200 KINGS HIGHWAY**  
LOCATED IN  
TOWN OF ORANGETOWN,  
ROCKLAND COUNTY, NEW YORK

SCALE DATE FILE #  
1" = 30' AUG. 5, 2021 YB-6621

YB-6621

TAX MAP REFERENCE SECT. 7707 BLK. 1, LOT 36  
 A MAP ENTITLED "OLD MILL PARK" PREPARED BY WILLIAM  
 A. YUDA, P.C. AND FILED IN THE ROCKLAND COUNTY CLERK'S  
 OFFICE ON JUNE 7, 1995 AS MAP NUMBER 2364.

L. 448, P. 583 (P.O.)  
 INST. #2007-18071 (P.O.)  
 L. 988, P. 198  
 L. 663, P. 83  
 L. 296, P. 1994  
 L. 428, P. 33  
 L. 105, P. 730  
 L. 1014, P. 296  
 INST. #2001-42017  
 INST. #2008-12748  
 INST. #2009-20744

**TREE LIST**

NO.	DIAMETER	SPECIES
T1	12"	YEW
T2	36"	CHESTNUT
T3	28"	HICKORY
T4	28"	WALNUT
T5	16" TRIN	MARLE
T6	36"	CHEERY
T7	30"	WALNUT
T8	42"	TULIP
T9	18"	TULIP
T10	8"	MARLE
T11	20"	BIRCH
T12	24"	MARLE
T13	14"	MARLE
T14	28"	ELM
T15	16"	ELM
T16	48"	ASH
T17	24"	LOCUST
T18	16"	MARLE
T19	12"	LOCUST
T20	28"	MARLE
T21	28"	MARLE
T22	36"	MARLE
T23	50"	BASSWOOD
T24	12"	MARLE
T25	28"	MARLE
T26	40"	OAK
T27	40"	OAK
T28	22"	MARLE
T29	40"	TULIP
T30	20"	MARLE
T31	16"	MARLE
T32	40"	MARLE
T33	40"	TULIP
T34	26"	MARLE
T35	40"	TULIP
T36	26"	MARLE
T37	18"	MARLE
T38	12"	MARLE
T39	12"	MARLE
T40	20"	MARLE
T41	20"	TULIP
T42	8"	OAK
T43	8"	OAK
T44	36"	MARLE
T45	8"	OAK
T46	50"	TULIP
T47	20"	WALNUT
T48	12"	ELM
T49	12"	MARLE
T50	26"	MARLE
T51	8"	OAK
T52	12"	ELM
T53	28"	MARLE
T54	28"	MARLE
T55	16"	CHEERY
T56	30"	MARLE
T57	14"	MARLE
T58	12"	MARLE
T59	12"	MARLE
T60	10"	MARLE
T61	16"	MARLE
T62	40"	WALNUT
T63	14"	WALNUT
T64	16"	LOCUST
T65	16"	LOCUST
T66	36"	LOCUST
T67	30"	LOCUST
T68	12"	MARLE
T69	22"	TULIP
T70	22"	TULIP
T71	28"	TULIP
T72	24"	CEDAR
T73	20"	CEDAR

**STUMP LIST**

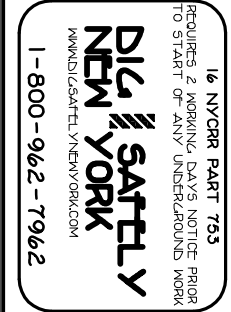
NO.	DIAMETER	SPECIES
S1	14"	MARLE
S2	12"	MARLE
S3	14"	MARLE
S4	14"	STUMP
S5	18"	MARLE
S6	18"	MARLE
S7	12"	STUMP
S8	12"	STUMP
S9	12"	LOCUST
S10	12"	STUMP
S11	40"	STUMP
S12	18"	MARLE
S13	18"	MARLE
S14	36"	STUMP
S15	12"	MARLE
S16	12"	MARLE
S17	12"	ASH
S18	24"	MARLE
S19	24"	MARLE
S20	20"	MARLE
S21	22"	MARLE
S22	24"	MARLE
S23	10"	MARLE
S24	20"	LOCUST
S25	36"	STUMP
S26	24"	WALNUT
S27	24"	STUMP
S28	20"	ASH
S29	20"	ASH
S30	16"	CHEERY
S31	40"	OAK
S32	36"	STUMP
S33	16"	STUMP
S34	14" TRIN	MARLE
S35	36"	ASH
S36	24"	ASH
S37	16"	STUMP
S38	16"	STUMP
S39	24"	STUMP
S40	12" TRIN	STUMP
S41	12"	MARLE
S42	30"	STUMP

**TREE LIST**

NO.	DIAMETER	SPECIES
T74	24"	ELM
T75	40"	WALNUT
T76	24"	WALNUT
T77	8"	WALNUT
T78	40"	WALNUT
T79	20"	OAK
T80	14"	MARLE
T81	10"	ELM
T82	10"	ELM
T83	12"	MARLE
T84	8"	MARLE
T85	24"	BIRCH
T86	18"	BIRCH
T87	28"	BIRCH
T88	12"	BIRCH
T89	50"	TULIP
T90	24"	BIRCH
T91	50"	BIRCH
T92	36"	BIRCH
T93	14"	BIRCH
T94	10"	BIRCH
T95	10"	BIRCH
T96	10"	BIRCH
T97	18" TRIN	OAK
T98	20"	BIRCH
T99	20"	OAK
T100	56"	OAK
T101	24"	OAK
T102	24"	OAK
T103	10"	MARLE
T104	14"	MARLE
T105	14"	MARLE
T106	14"	MARLE
T107	16"	ELM
T108	20"	BIRCH
T109	20"	WALNUT
T110	10"	MARLE
T111	12"	OAK
T112	10"	BIRCH
T113	36"	MARLE
T114	12"	MARLE
T115	40"	OAK
T116	40"	OAK
T117	16"	MARLE
T118	26"	OAK
T119	20"	OAK
T120	20"	WALNUT
T121	22"	PINE
T122	30"	BIRCH
T123	22"	BIRCH
T124	10"	BIRCH
T125	24"	OAK
T126	24"	OAK
T127	24"	MARLE
T128	10"	BIRCH
T129	24"	OAK
T130	40"	OAK
T131	10"	ELM
T132	10"	ELM
T133	40"	CHEERY
T134	48"	OAK
T135	40"	OAK
T136	14"	OAK
T137	14"	OAK
T138	10"	ELM
T139	10"	TULIP
T140	54"	BIRCH
T141	30"	BIRCH
T142	30"	BIRCH
T143	24"	MARLE
T144	20"	BIRCH
T145	20"	BIRCH
T146	20"	BIRCH



ALL UTILITIES ARE SHOWN IN AN APPROXIMATE MANNER FROM AVAILABLE INFORMATION. THE CONTRACTOR SHALL BE RESPONSIBLE FOR VERIFYING THE LOCATION AND DEPTH OF ALL UTILITIES PRIOR TO ANY CONSTRUCTION. ANY INVERT OF ALL UTILITIES PRIOR TO ANY CONSTRUCTION SHALL BE SHOWN ON THE SPARKING SURVEY OF THE SPARKING MAP. NO USE SHOWN ON THE SPARKING SURVEY.



UNLAWFUL ALTERATION OR ADDITION TO THIS PLAN OR THE STATE OF NEW YORK. THIS MAP NOT BEING A FINAL MAP OF THE ENGINEER OR SURVEYOR OR ENGINEER DRAWING.

GEORGE D. DANUBERGA, P.E. 1-050911

EXISTING CONDITION PLAN (SHEET 3 OF 4)  
 FOR  
**200 KINGS HIGHWAY**  
 LOCATED IN  
 TOWN OF ORANGETOWN,  
 ROCKLAND COUNTY, NEW YORK

REV. STUMP & PILE LOCATIONS - 12/02/2021  
 REV. PER COMMENTS - 12/14/2021

**SPARACO & YOUNGBLOND, PLLC**  
 CIVIL ENGINEERING & LAND SURVEYING  
 SITE PLANNING  
 18 NORTH MAIN STREET  
 HARRISBURG, NY 10926  
 TEL: (845) 782-8943  
 WWW.SPACOSURVEYS.COM

YB-6621  
 FILE #  
 DATE  
 AUL 5, 2021  
 SCALE  
 1" = 30'

