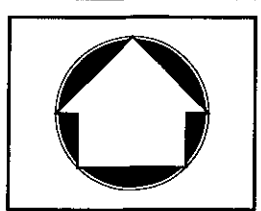


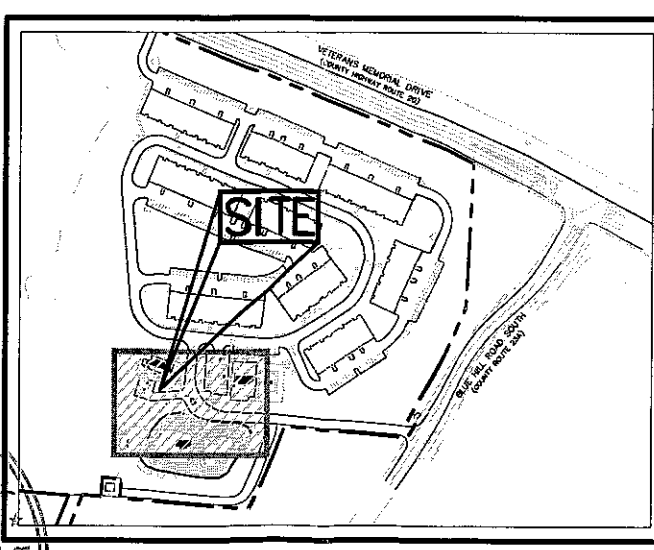
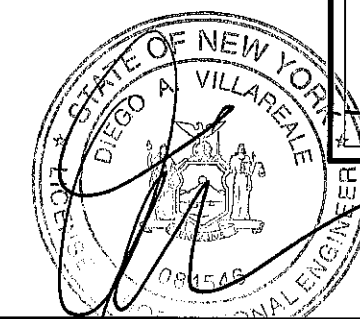
JMC
 120 BEDFORD RD
 ARMONK
 NY 10604
 (914) 273-5225
 fax 273-2102
 JMCPLLC.COM



ORANGETOWN, NY
 JMC PROJECT: 12118
 SCALE: 1" = 30'

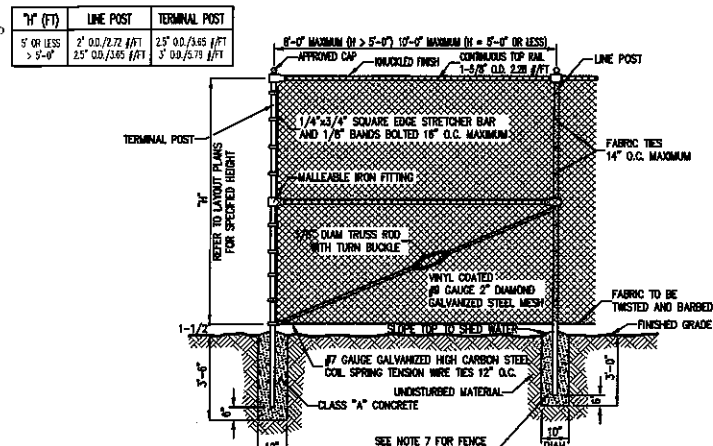
THE CLUB AT PEARL RIVER
PROPOSED DOG RUN SKETCH PLAN

PLANNING BOARD
 MEETING OF
 DEC 08 2021
 Town Of Orangetown

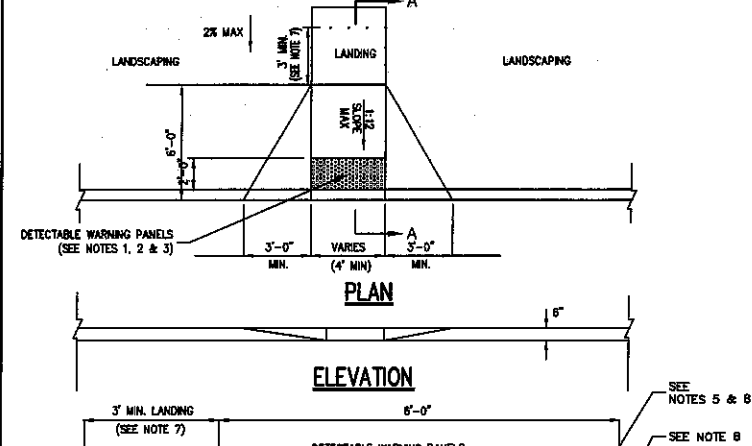


KEY MAP
 SCALE: 1" = 500'

COPYRIGHT © 2021 by JMC. All Rights Reserved. No part of this document may be reproduced, stored in a retrieval system, or transmitted in any form or by means, electronic, mechanical, photocopying, recording or otherwise, without the prior written permission of JMC PLANNING, ENGINEERING, LANDSCAPE ARCHITECTURE & LAND SURVEYING, PLLC; JOHN MEYER CONSULTANTS, LLC; JOHN MEYER CONSULTING, INC. (JMC). Any modifications or alterations to this document without the written permission of JMC shall render them invalid and unusable.



- NOTES:**
1. ALL POSTS, RAILS, FABRIC AND ACCESSORIES SHALL BE VINYL COATED. COLOR OF VINYL COATING SHALL BE BLACK.
 2. POST AND RAILS SHALL BE STANDARD FULL WEIGHT VINYL COATED GALVANIZED SCHEDULE 40 PIPE MANUFACTURED AND GALVANIZED IN ACCORDANCE WITH ASTM A-120. ALL MATERIALS SHALL BE NEW AND FIRST CLASS AND SHALL NOT INCLUDE RECONDITIONED OR REROLLED PIPE.
 3. FITTINGS SHALL BE VINYL COATED MALLEABLE IRON FITTINGS CONFORMING TO THE REQUIREMENTS OF ASTM A-47 GALVANIZED IN ACCORDANCE WITH ASTM A-153.
 4. FABRIC SHALL BE 9 GAUGE GALVANIZED 2\"/>



- NOTES:**
1. RAMPS SHALL HAVE CAST IN PLACE DETECTABLE/TACTILE WARNING SURFACE TILES AS MANUFACTURED BY ARMOR-TILE (OR APPROVED EQUAL) AND SHALL CONSIST OF RAISED TRUNCATED DOMES WITH A DIAMETER OF NOMINAL 0.9 INCHES, A HEIGHT OF NOMINAL 0.2 INCHES AND A CENTER TO CENTER SPACING OF NOMINAL 2.35 INCHES.
 2. DETECTABLE WARNING PANELS SHALL CONTRAST VISUALLY WITH ADJOINING SURFACES, EITHER LIGHT-ON-DARK OR DARK-ON-LIGHT IN ACCORDANCE WITH SECTION 4.29.2, FEDERAL REGISTER, VOLUME 56, NO. 144, RULES AND REGULATIONS, APPENDIX A TO PART 36 - STANDARDS FOR ACCESSIBLE DESIGN (AMERICANS WITH DISABILITIES ACT), LATEST EDITION.
 3. 24\"/>

THE SENTRY® DOG WASTE STATION

PARTS LIST:

- Can (1)
- Post (1)
- Dispenser (1)
- Sign (1)
- Spacer (1)
- Hardware Pack (1)
- Dispenser Keys (2)
- 400 BAGS
- 50 CAN LINERS

THE SENTRY® DOG WASTE STATION ASSEMBLY INSTRUCTIONS

1. **ASSEMBLE POST:** overlap post one 4\"/>

120 BEDFORD RD
ARMONK
NY 10504
(914) 273-5225
fax 273-2102
JMCPLLC.COM

CHAIN LINK FENCE

(VINYL COATED)

DROP CURB & RAMP (TYPE A)

WITH DETECTABLE WARNING

SENTRY DOG WASTE STATION - TERRA BOUND SOLUTIONS

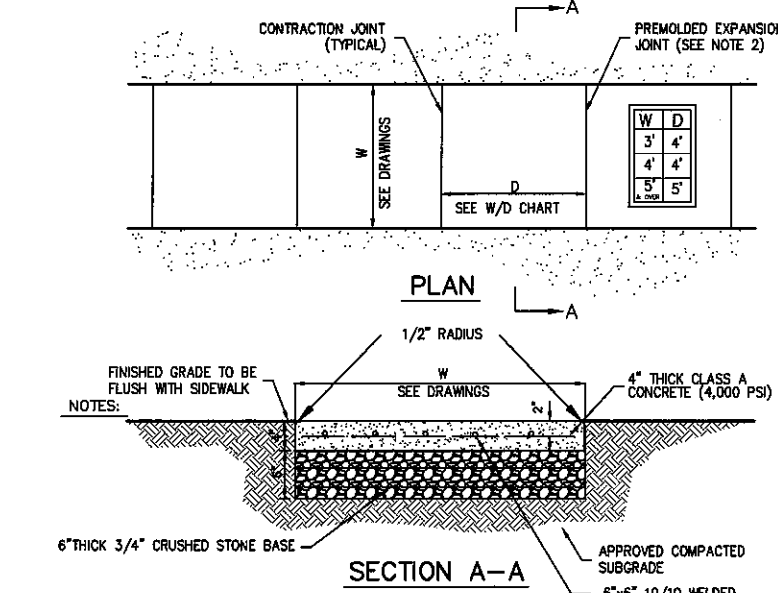
ORANGETOWN, NY

THE CLUB AT PEARL RIVER

CONSTRUCTION DETAILS

JMC PROJECT: 12118

SCALE: 1" = 30'



- NOTES:**
1. SIDEWALK CROSS SLOPE SHALL BE 1% MIN. TO 2% MAX.
 2. PROVIDE 1/2\"/>

K9Grass System

ForeverLawn

5801 Mayfair Rd., Suite 4 • North Canton, OH 44720
Phone: 866.992.7876 • Fax: 330.249.2170 • foreverlawn.com

By: K. Kamilo 10/18
Scale: Not to scale
Drawing No.: K01

OVERALL DIMENSIONS

UltraSite

800-45-ULTRA
www.ultra-site.com

4/6/2015

STATE OF NEW YORK
DIEGO A. VILLALOBOS
LICENSED PROFESSIONAL ENGINEER
084548

CONCRETE SIDEWALK

TURF

BENCH

12118_PEARL RIVER_DRAINAGE PLAN.dwg DATE: 08/13/2021

FIGURE: 2

COPYRIGHT © 2021 by JMC. All Rights Reserved. No part of this document may be reproduced, stored in a retrieval system, or transmitted in any form or by means, electronic, mechanical, photocopying, recording or otherwise, without the prior written permission of JMC PLANNING, ENGINEERING, LANDSCAPE ARCHITECTURE & LAND SURVEYING, PLLC | JMC SITE DEVELOPMENT CONSULTANTS, LLC | JOHN MEYER CONSULTING, INC. (JMC). Any modifications or alterations to this document without the written permission of JMC shall render them invalid and unusable.