

**BULK TABLE - ZONE CO • COMMERCIAL - OFFICE • USE GROUP M1 (CHILD DAY CARE)**

MAX. FLOOR AREA RATIO	MIN. LOT AREA	MIN. LOT WIDTH	MIN. STREET FRONTAGE	MIN. FRONT YARD	MIN. SIDE YARD	MIN. REAR YARD	MIN. TOTAL YARD	MIN. MAX. BLDG HEIGHT
REQUIRED: 0.20	30,000 SF	150'	50'	30'	35'	30'	90'	50'
PROVIDED: 0.11	116,960 SF GROSS	290'	347'+4.85'	107'	50'	238'	53±'	30.5 (<67'±)

\* MAXIMUM LAND COVERAGE SHALL NOT EXCEED 75%, INCLUDING BUILDINGS, PARKING, ROAD AND ROAD WIDENING.  
 THE OPEN AREA SHALL BE A MINIMUM OF 25%.  
 REQUIRED BUFFERS: 15' AT WEST PROPERTY LINE.  
 116,960 SF - 50% ROAD WIDENING = 116,140 SF NET

**PARKING REQUIREMENTS**  
 ONE SPACE PER STAFF MEMBER, PLUS 1 PARKING SPACE PER 10 CHILDREN  
 REQUIRED: 24 STAFF, 158 CHILDREN; REQ-D=40 PROVIDED=42

- LEGEND**
- DRAINAGE INLET W/PIPES
  - TOP CURB @ CATCH BASIN
  - REINFORCED CONCRETE PIPE
  - UTILTY POLE WITH LIGHT
  - UTILTY POLE
  - HYDRANT
  - OVERHEAD WIRES
  - GAS VALVE
  - IRRIIGATION CONTROL VALVE
  - GAS LINE
  - WATER LINE
  - COUNTUR LINE
  - SPOT GRADE

**CIVIL DESIGN WORKS**  
 CIVIL ENGINEERING CONSULTANTS AND DESIGNERS  
 19 SQUADRON NEW YORK OFFICE (LAND)  
 WWW.CIVILDESIGNWORKS.COM  
 NEW YORK, NY 10956  
 TEL: 914-266-8441  
 TEL: 914-266-8441

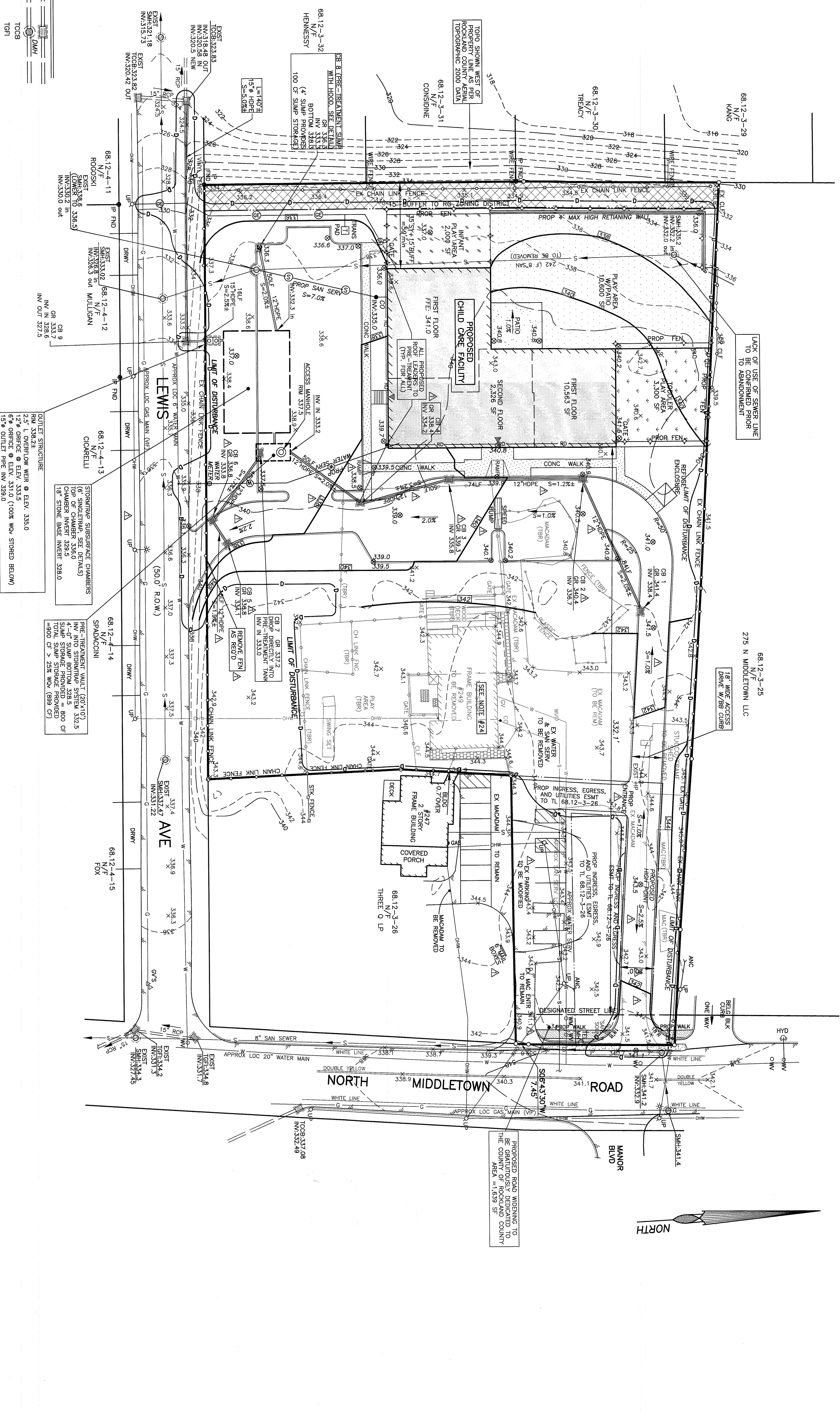
**JAY A. GREENWELL, PLS**  
 LICENSED PROFESSIONAL PLANNING BOARD  
 STATE OF NEW YORK  
 JAY A. GREENWELL, PLS  
 MYS LIC. # 19676

DATE	REVISIONS
02/18/20	BLDG RELOCATED
01/10/20	DUMP/TRANS
09/03/21	TRAFFIC PATTERN

TAX LOT #	AREA SF	FILE	SCALE
68-12-3-27	116,960	21908-1 SITE	1" = 30'

**JAY A. GREENWELL, PLS, LLC**  
 SURVEYING & LAND PLANNING  
 85 LAFAYETTE AVENUE, SUITE 100, NEW YORK, NY 10017  
 PHONE: 646-357-0830 FAX: 646-357-0756  
 21908

- NOTES:**
- OWNER & APPLICANT: SAFE 'N' SOUND CHILD CARE, 249 N. MIDDLETOWN RD, ROCKLAND, NY 10925
  - TAX MAP NUMBER: 68-12-3-27
  - DATE: 02/18/20
  - ZONING DISTRICT: CO-COMMERCIAL OFFICE
  - LOT DIMENSIONS: 116,960 SF
  - NOT BE DISTURBED
  - ALL NEW UTILITIES, INCLUDING ELECTRIC AND TELEPHONE, SHALL BE INSTALLED UNDERGROUND.
  - THE ROCKLAND COUNTY HEALTH DEPARTMENT ON THE TOWN OF ORANGETOWN HAS BEEN ADVISED OF THIS PROJECT AND HAS REVIEWED THE PLANS.
  - NO BUILDING PERMITS SHALL BE ISSUED UNTIL SEWER ARRANGEMENTS HAVE BEEN APPROVED BY THE ROCKLAND COUNTY HEALTH DEPARTMENT.
  - THIS PLAN DOES NOT CONFLICT WITH THE COUNTY OFFICIAL MAP AND HAS BEEN APPROVED IN THE MANNER SPECIFIED IN SECTION 239 OF THE GENERAL MUNICIPAL LAW.
  - PRIOR TO CONSTRUCTION, THE CONTRACTOR SHALL VERIFY THE EXISTENCE AND LOCATION OF ALL UNDERGROUND UTILITIES.
  - ALL PROPOSED RETAINING WALLS GREATER THAN 4 FEET MUST BE DESIGNED, SIGNED, AND PLANS SEALED BY A NEW YORK STATE LICENSED PROFESSIONAL CIVIL ENGINEER AND ENGINEERING AND SURVEYING COMPANY.
  - THE BUILDING DEPARTMENT FOR REVIEW AND APPROVAL, UPON COMPLETION OF THE WORK, SIGNED AND SEALED "AS-BUILT" OF THE WALLS SHALL BE SUBMITTED TO BOTH DEPARTMENTS, CERTIFYING THAT THE WALLS ARE CONSTRUCTED ON THE SITE PLAN SHALL BE MAINTAINED IN A VIGOROUS GROWING CONDITION THROUGHOUT THE DURATION OF THE USE OF THE SITE. ANY PLANTS NOT SO MAINTAINED SHALL BE REPLACED WITH NEW PLANTS AT THE BEGINNING OF THE NEXT IMMEDIATELY FOLLOWING GROWING SEASON.
  - THE CONTRACTOR'S TRAILER, IF ANY IS PROPOSED, SHALL BE LOCATED AS APPROVED BY THE ORANGETOWN PLANNING BOARD.
  - IF THE APPLICANT, DURING THE COURSE OF CONSTRUCTION, ENCOUNTERS SUCH CONDITIONS AS FLOOD AREAS, UNDERMINES OR CONDITIONS THAT WERE NOT PRESENT IN THE ORIGINAL PLANNING, SUCH CONDITIONS SHALL BE REPORTED IMMEDIATELY TO THE DEPT. OF ENVIRONMENTAL MANAGEMENT AND ENGINEERING. THE APPLICANT SHALL SUBMIT THEIR RECOMMENDATIONS AS TO THE NATURE OF THE CONDITIONS TO THE DEPT. OF ENVIRONMENTAL MANAGEMENT AND ENGINEERING FOR REVIEW AND APPROVAL. THE DEPT. OF ENVIRONMENTAL MANAGEMENT AND ENGINEERING SHALL INVESTIGATE THE CONDITION OR CONDITIONS, AND SHALL EITHER APPROVE THE APPLICANT'S RECOMMENDATIONS TO CORRECT THE CONDITIONS, OR ORDER A MODIFICATION THEREOF. APPLICANT'S RECOMMENDATIONS TO CORRECT THE CONDITIONS, OR ORDER A MODIFICATION THEREOF, SHALL BE APPROVED WITH THE DECISION OF THE DEPT. OF ENVIRONMENTAL MANAGEMENT AND ENGINEERING. IN THE EVENT OF A SIGNIFICANT CHANGE RESULTING TO THE PLAN OR ANY CHANGE THAT OCCURS IN THE SIGNIFICANT AREA, THE MATTER SHALL BE DECIDED BY THE DESIGN WITH JURISDICTION IN THAT AREA.
  - PERMANENT VEGETATION COVER OF DISTURBED AREAS SHALL BE ESTABLISHED ON THE SITE WITHIN 30 DAYS OF THE COMPLETION OF CONSTRUCTION.
  - THE PLANNING BOARD SHALL RETAIN JURISDICTION OVER LIGHTING, LANDSCAPING, SIGNS AND REFUSE CONTROL.
  - AT LEAST ONE WEEK PRIOR TO THE COMMENCEMENT OF ANY WORK, INCLUDING THE INSTALLATION OF EROSION CONTROL DEVICES FOR THE REMOVAL OF SEDIMENT, THE TOWN OF ORANGETOWN, THE TOWN OF MIDDLETOWN, THE TOWN OF ROCKLAND, THE TOWN OF SPADONONI, AND PLANNING ADMINISTRATION AND ENFORCEMENT, IT IS THE RESPONSIBILITY AND OBLIGATION OF THE PROPERTY OWNER TO ARRANGE SUCH A MEETING.
  - TREE PROTECTION: THE TREE PROTECTION AND PRESERVATION GUIDELINES ADOPTED PURSUANT TO SECTION 21-24 OF THE LAND DEVELOPMENT REGULATIONS OF THE TOWN OF ORANGETOWN WILL BE APPLIED TO ALL TREES ON THE SITE. TREES TO BE PRESERVED SHALL BE MARKED CONSPICUOUSLY ON THE PLANS AS FOLLOWS:  
 a. TREES DESIGNATED TO BE PRESERVED SHALL BE MARKED CONSPICUOUSLY ON THE PLANS AS FOLLOWS:  
 1. ALL SIDES AT A 5 TO 10 FOOT HEIGHT.  
 2. TREES DESIGNATED TO BE PRESERVED SHALL BE MARKED CONSPICUOUSLY ON THE PLANS AS FOLLOWS:  
 a. ALL SIDES AT A 5 TO 10 FOOT HEIGHT.  
 b. TREES DESIGNATED TO BE PRESERVED SHALL BE MARKED CONSPICUOUSLY ON THE PLANS AS FOLLOWS:  
 1. ONE (1) FOOT RADIUS FROM TRUNK PER INCH DBH.  
 2. DBH LINE OF THE TREE CORNER.  
 3. DBH LINE OF THE TREE CORNER.  
 4. A 5 TO 10 FOOT RADIUS FROM TRUNK PER INCH DBH.  
 5. A 5 TO 10 FOOT RADIUS FROM TRUNK PER INCH DBH.  
 6. A 5 TO 10 FOOT RADIUS FROM TRUNK PER INCH DBH.  
 7. A 5 TO 10 FOOT RADIUS FROM TRUNK PER INCH DBH.  
 8. A 5 TO 10 FOOT RADIUS FROM TRUNK PER INCH DBH.  
 9. A 5 TO 10 FOOT RADIUS FROM TRUNK PER INCH DBH.  
 10. A 5 TO 10 FOOT RADIUS FROM TRUNK PER INCH DBH.  
 11. A 5 TO 10 FOOT RADIUS FROM TRUNK PER INCH DBH.  
 12. A 5 TO 10 FOOT RADIUS FROM TRUNK PER INCH DBH.  
 13. A 5 TO 10 FOOT RADIUS FROM TRUNK PER INCH DBH.  
 14. A 5 TO 10 FOOT RADIUS FROM TRUNK PER INCH DBH.  
 15. A 5 TO 10 FOOT RADIUS FROM TRUNK PER INCH DBH.  
 16. A 5 TO 10 FOOT RADIUS FROM TRUNK PER INCH DBH.  
 17. A 5 TO 10 FOOT RADIUS FROM TRUNK PER INCH DBH.  
 18. A 5 TO 10 FOOT RADIUS FROM TRUNK PER INCH DBH.  
 19. A 5 TO 10 FOOT RADIUS FROM TRUNK PER INCH DBH.  
 20. A 5 TO 10 FOOT RADIUS FROM TRUNK PER INCH DBH.  
 21. A 5 TO 10 FOOT RADIUS FROM TRUNK PER INCH DBH.  
 22. A 5 TO 10 FOOT RADIUS FROM TRUNK PER INCH DBH.  
 23. A 5 TO 10 FOOT RADIUS FROM TRUNK PER INCH DBH.  
 24. A 5 TO 10 FOOT RADIUS FROM TRUNK PER INCH DBH.  
 25. A 5 TO 10 FOOT RADIUS FROM TRUNK PER INCH DBH.  
 26. A 5 TO 10 FOOT RADIUS FROM TRUNK PER INCH DBH.  
 27. A 5 TO 10 FOOT RADIUS FROM TRUNK PER INCH DBH.  
 28. A 5 TO 10 FOOT RADIUS FROM TRUNK PER INCH DBH.  
 29. A 5 TO 10 FOOT RADIUS FROM TRUNK PER INCH DBH.  
 30. A 5 TO 10 FOOT RADIUS FROM TRUNK PER INCH DBH.  
 31. A 5 TO 10 FOOT RADIUS FROM TRUNK PER INCH DBH.  
 32. A 5 TO 10 FOOT RADIUS FROM TRUNK PER INCH DBH.  
 33. A 5 TO 10 FOOT RADIUS FROM TRUNK PER INCH DBH.  
 34. A 5 TO 10 FOOT RADIUS FROM TRUNK PER INCH DBH.  
 35. A 5 TO 10 FOOT RADIUS FROM TRUNK PER INCH DBH.  
 36. A 5 TO 10 FOOT RADIUS FROM TRUNK PER INCH DBH.  
 37. A 5 TO 10 FOOT RADIUS FROM TRUNK PER INCH DBH.  
 38. A 5 TO 10 FOOT RADIUS FROM TRUNK PER INCH DBH.  
 39. A 5 TO 10 FOOT RADIUS FROM TRUNK PER INCH DBH.  
 40. A 5 TO 10 FOOT RADIUS FROM TRUNK PER INCH DBH.  
 41. A 5 TO 10 FOOT RADIUS FROM TRUNK PER INCH DBH.  
 42. A 5 TO 10 FOOT RADIUS FROM TRUNK PER INCH DBH.  
 43. A 5 TO 10 FOOT RADIUS FROM TRUNK PER INCH DBH.  
 44. A 5 TO 10 FOOT RADIUS FROM TRUNK PER INCH DBH.  
 45. A 5 TO 10 FOOT RADIUS FROM TRUNK PER INCH DBH.  
 46. A 5 TO 10 FOOT RADIUS FROM TRUNK PER INCH DBH.  
 47. A 5 TO 10 FOOT RADIUS FROM TRUNK PER INCH DBH.  
 48. A 5 TO 10 FOOT RADIUS FROM TRUNK PER INCH DBH.  
 49. A 5 TO 10 FOOT RADIUS FROM TRUNK PER INCH DBH.  
 50. A 5 TO 10 FOOT RADIUS FROM TRUNK PER INCH DBH.  
 51. A 5 TO 10 FOOT RADIUS FROM TRUNK PER INCH DBH.  
 52. A 5 TO 10 FOOT RADIUS FROM TRUNK PER INCH DBH.  
 53. A 5 TO 10 FOOT RADIUS FROM TRUNK PER INCH DBH.  
 54. A 5 TO 10 FOOT RADIUS FROM TRUNK PER INCH DBH.  
 55. A 5 TO 10 FOOT RADIUS FROM TRUNK PER INCH DBH.  
 56. A 5 TO 10 FOOT RADIUS FROM TRUNK PER INCH DBH.  
 57. A 5 TO 10 FOOT RADIUS FROM TRUNK PER INCH DBH.  
 58. A 5 TO 10 FOOT RADIUS FROM TRUNK PER INCH DBH.  
 59. A 5 TO 10 FOOT RADIUS FROM TRUNK PER INCH DBH.  
 60. A 5 TO 10 FOOT RADIUS FROM TRUNK PER INCH DBH.  
 61. A 5 TO 10 FOOT RADIUS FROM TRUNK PER INCH DBH.  
 62. A 5 TO 10 FOOT RADIUS FROM TRUNK PER INCH DBH.  
 63. A 5 TO 10 FOOT RADIUS FROM TRUNK PER INCH DBH.  
 64. A 5 TO 10 FOOT RADIUS FROM TRUNK PER INCH DBH.  
 65. A 5 TO 10 FOOT RADIUS FROM TRUNK PER INCH DBH.  
 66. A 5 TO 10 FOOT RADIUS FROM TRUNK PER INCH DBH.  
 67. A 5 TO 10 FOOT RADIUS FROM TRUNK PER INCH DBH.  
 68. A 5 TO 10 FOOT RADIUS FROM TRUNK PER INCH DBH.  
 69. A 5 TO 10 FOOT RADIUS FROM TRUNK PER INCH DBH.  
 70. A 5 TO 10 FOOT RADIUS FROM TRUNK PER INCH DBH.  
 71. A 5 TO 10 FOOT RADIUS FROM TRUNK PER INCH DBH.  
 72. A 5 TO 10 FOOT RADIUS FROM TRUNK PER INCH DBH.  
 73. A 5 TO 10 FOOT RADIUS FROM TRUNK PER INCH DBH.  
 74. A 5 TO 10 FOOT RADIUS FROM TRUNK PER INCH DBH.  
 75. A 5 TO 10 FOOT RADIUS FROM TRUNK PER INCH DBH.  
 76. A 5 TO 10 FOOT RADIUS FROM TRUNK PER INCH DBH.  
 77. A 5 TO 10 FOOT RADIUS FROM TRUNK PER INCH DBH.  
 78. A 5 TO 10 FOOT RADIUS FROM TRUNK PER INCH DBH.  
 79. A 5 TO 10 FOOT RADIUS FROM TRUNK PER INCH DBH.  
 80. A 5 TO 10 FOOT RADIUS FROM TRUNK PER INCH DBH.  
 81. A 5 TO 10 FOOT RADIUS FROM TRUNK PER INCH DBH.  
 82. A 5 TO 10 FOOT RADIUS FROM TRUNK PER INCH DBH.  
 83. A 5 TO 10 FOOT RADIUS FROM TRUNK PER INCH DBH.  
 84. A 5 TO 10 FOOT RADIUS FROM TRUNK PER INCH DBH.  
 85. A 5 TO 10 FOOT RADIUS FROM TRUNK PER INCH DBH.  
 86. A 5 TO 10 FOOT RADIUS FROM TRUNK PER INCH DBH.  
 87. A 5 TO 10 FOOT RADIUS FROM TRUNK PER INCH DBH.  
 88. A 5 TO 10 FOOT RADIUS FROM TRUNK PER INCH DBH.  
 89. A 5 TO 10 FOOT RADIUS FROM TRUNK PER INCH DBH.  
 90. A 5 TO 10 FOOT RADIUS FROM TRUNK PER INCH DBH.  
 91. A 5 TO 10 FOOT RADIUS FROM TRUNK PER INCH DBH.  
 92. A 5 TO 10 FOOT RADIUS FROM TRUNK PER INCH DBH.  
 93. A 5 TO 10 FOOT RADIUS FROM TRUNK PER INCH DBH.  
 94. A 5 TO 10 FOOT RADIUS FROM TRUNK PER INCH DBH.  
 95. A 5 TO 10 FOOT RADIUS FROM TRUNK PER INCH DBH.  
 96. A 5 TO 10 FOOT RADIUS FROM TRUNK PER INCH DBH.  
 97. A 5 TO 10 FOOT RADIUS FROM TRUNK PER INCH DBH.  
 98. A 5 TO 10 FOOT RADIUS FROM TRUNK PER INCH DBH.  
 99. A 5 TO 10 FOOT RADIUS FROM TRUNK PER INCH DBH.  
 100. A 5 TO 10 FOOT RADIUS FROM TRUNK PER INCH DBH.



**LEGEND**

- DRAINAGE INLET W/PIPES
- DRAIN MANHOLE WITH PIPES
- TOP CURB @ CATCH BASIN
- TOP GRADE FIELD INLET
- REINFORCED CONCRETE PIPE
- CORRUGATED PLASTIC PIPE
- UTILITY POLE
- UTILITY POLE WITH LIGHT
- WATER POLE
- WATER VALVE
- GAS VALVE
- IRRIGATION CONTROL VALVE
- OVERHEAD WIRES
- GAS LINE
- GAS, ELEC. TEL. CANY
- WATER LINE
- CONTOUR LINE
- SPOT GRADE
- PROPOSED SPOT GRADE
- LIMIT OF DISTURBANCE
- PROP. CATCH BASIN
- PROP. DRAIN MANHOLE

**IMPERVIOUS BREAKDOWN**

TAX LOT 68.12-3-27	
EXIST IMPERVIOUS = 14,735 SF	
PROP IMPERVIOUS = 36,590 SF	
AMOUNT TO BE MITIGATED = 21,855 SF	

LIMIT OF AREA TO BE DISTURBED  
AREA = 99,715 SF = 2.29 AC

**CIVIL DESIGN WORKS**  
LLC  
ONE ENGINEERING CONSULTANTS AND DESIGNERS  
NEW YORK, NY 10985  
19 SQUADRON BLVD-SUITE 4, NEW CITY, NY, 10985  
TELEPHONE: 845-266-6441

GLENN MICAREDO, PE  
NS LIC # 84274

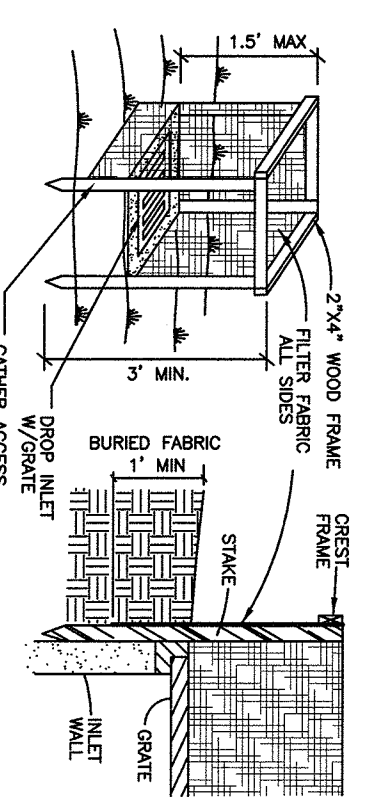
JAY A. GREENWELL, PLS  
NS LIC # 19878

DATE	04/03/21	TRAFFIC PATTERN
DATE	01/10/20	DUMP/TRANS
DATE	07/29/19	REVISIONS

**GRADING, DRAINAGE AND UTILITY PLAN**  
**SAFE 'N' SOUND CHILD CARE**  
PEARL RIVER, TOWN OF ORANGETOWN  
ROCKLAND COUNTY, STATE OF NEW YORK

**JAY A. GREENWELL, PLS, LLC**  
SURVEYING - LAND PLANNING  
85 LAFAYETTE AVENUE, SUFFERN, NEW YORK, 10901  
PHONE 845-357-0830 FAX 845-357-0756

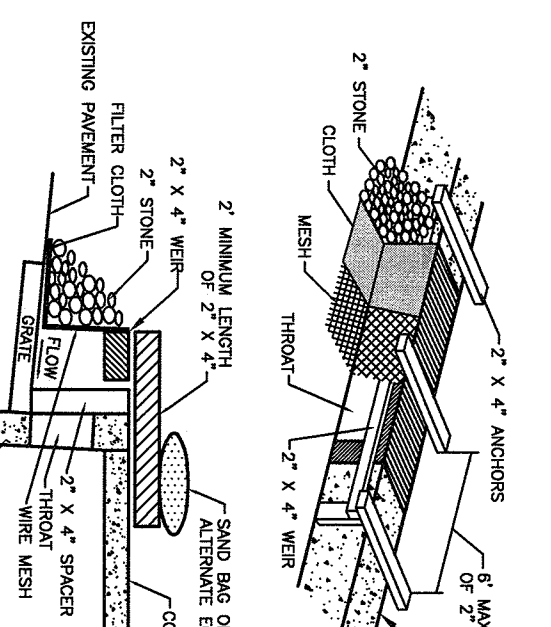
TAX LOT # 68.12-3-27  
AREA 116,960 SF  
FILE 21908 GRADING  
SCALE 1" = 30'  
DATE 7/29/19  
JOB NO. 21908  
SHEET 2



**CONSTRUCTION SPECIFICATIONS**

1. FILTER FABRIC SHALL HAVE AN EGS OF 40-65. BURAP MAY BE USED FOR SHORT TERM APPLICATIONS.
2. CUT FABRIC FROM A CONTINUOUS ROLL TO ELIMINATE JOINTS. IF JOINTS ARE NEEDED THEY WILL BE OVERLAPPED TO THE NEXT STRIKE.
3. STRIKE INTERVALS WILL BE STANDARD 2'X4' WOOD OR EQUIVALENT STAKE WITH MINIMUM FEET SPACING.
4. STRIKE STAKES EVENLY AROUND INLET 3 FEET APART AND DRIVE A MINIMUM 18 INCHES DEEP. STRIKES GREATER THAN 3 FEET MAY BE USED FOR SUPPORT. THE USE OF WIRE MESH BEHIND THE FILTER FABRIC IS FOR SUPPORT.
5. FABRIC SHALL BE EMBROIDERED 1 FOOT MINIMUM BELOW THE GROUND AND FRAME.
6. A 2'X4' WOOD FRAME SHALL BE COMPLETELY AROUND THE CREST MAXIMUM DIMENSION AREA. 1 ACRE

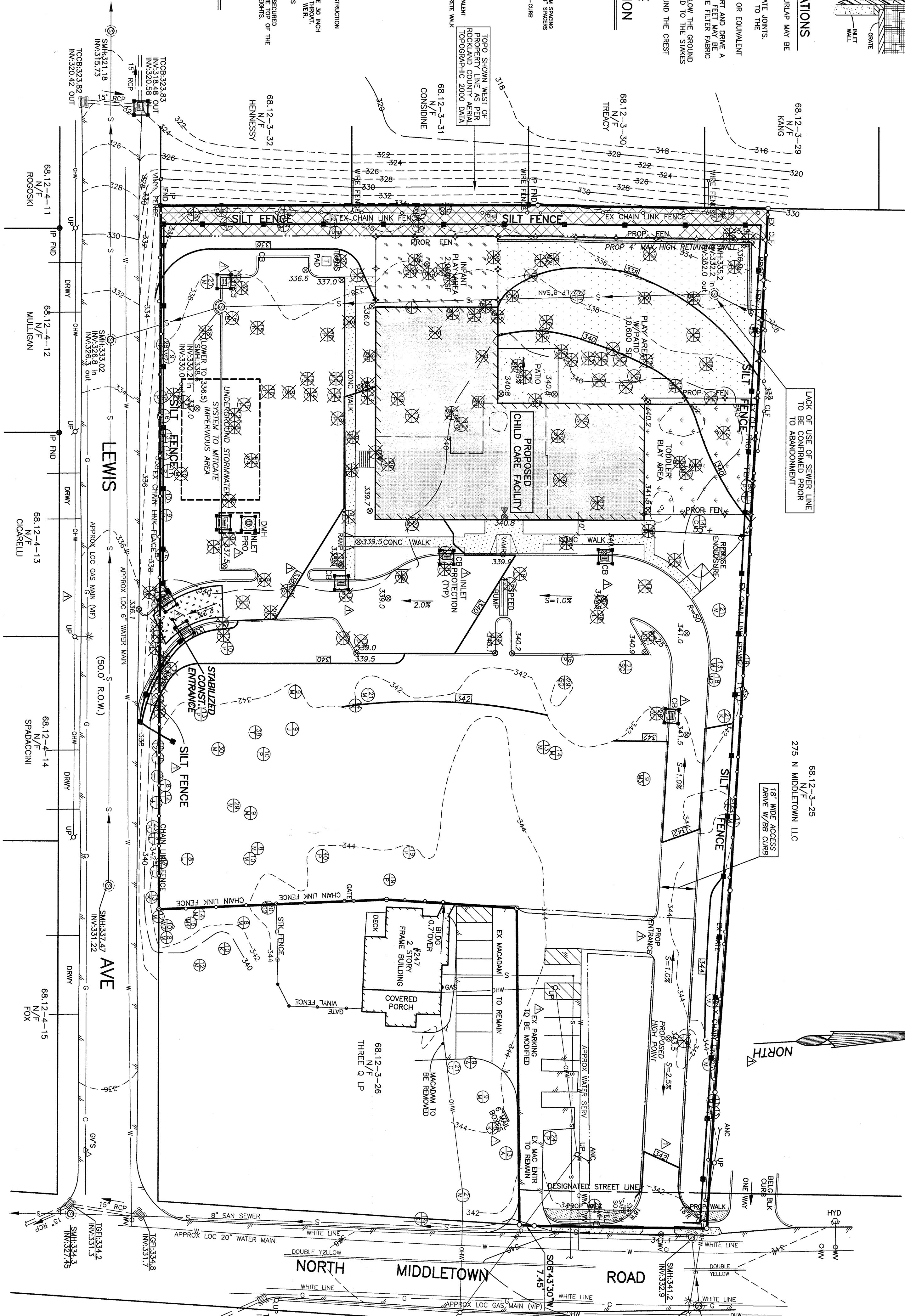
**DROP INLET PROTECTION**



**CONSTRUCTION SPECIFICATIONS**

1. FILTER FABRIC SHALL HAVE AN EGS OF 40-65.
2. WIRE MESH ACROSS THROUGH SHALL BE A CONTINUOUS ROLL TO ELIMINATE JOINTS.
3. THE MESH SHALL BE EMBROIDERED TO 2' X 4' STAKES.
4. THE ASSEMBLY SHALL BE PLACED AGAINST THE INLET AND SECURED BY NAIL AND FIELD NAILS AT 2 FEET SPACING.
5. THE MESH SHALL BE EMBROIDERED TO 2' X 4' STAKES.
6. THE MESH SHALL BE EMBROIDERED TO 2' X 4' STAKES.
7. THE MESH SHALL BE EMBROIDERED TO 2' X 4' STAKES.
8. THE MESH SHALL BE EMBROIDERED TO 2' X 4' STAKES.
9. THE MESH SHALL BE EMBROIDERED TO 2' X 4' STAKES.
10. THE MESH SHALL BE EMBROIDERED TO 2' X 4' STAKES.

**STONE FILTER INLET PROTECTION**

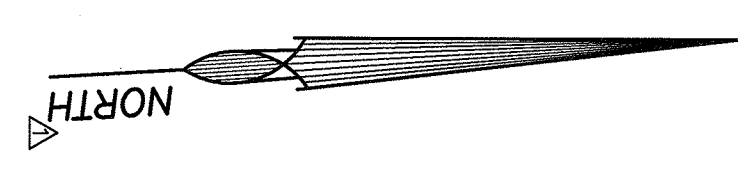


**LEGEND**

- DRAINAGE INLET W/PIPS  
 TOP CURB @ CATCH BASIN  
 TOP GRATE FIELD INLET  
 REINFORCED CONCRETE PIPE  
 CORRUGATED PLASTIC PIPE  
 UTILITY POLE WITH LIGHT  
 WATER VALVE  
 HYDRANT  
 GAS VALVE  
 IRRIGATION CONTROL VALVE  
 OVERHEAD WIRES  
 GAS LINE  
 WATER LINE  
 CONTOUR LINE  
 SPOT GRADE  
 LIMIT OF DISTURBANCE  
 PROP CATCH BASIN  
 PROP DRAIN MANHOLE  
 INLET PROTECTION  
 SLIT FENCE

**TREE LEGEND**

- SIZE IN INCHES (LARGEST DIA SHOWN IN TWIN/TRIPLE)  
 LETTER INDICATES TREE TYPE (SEE BELOW)  
 SECOND NUMBER (2), (3) INDICATES TWIN/TRIPLE  
 TREE TO BE REMOVED
- A = ASH  
 BN = BUTTERNUT  
 B = BIRCH  
 C = CHERRY  
 H = HICKORY  
 HL = HOLLY  
 J = JAPANESE MAPLE  
 L = LOCUST  
 M = MAPLE  
 K = OAK  
 P = PINE  
 S = Sycamore  
 SG = SWETGUM



**CONSTRUCTION NOTES FOR FABRICATED SILT FENCE**

1. WORKER WIRE FENCE TO BE FASTENED SECURELY TO FENCE POSTS WITH WIRE TIES OR STAPLES.
2. FILTER CLOTH TO BE FASTENED SECURELY TO WORKER WIRE FENCE WITH TIES SPACED EVERY 24" AT TOP AND MID SECTION.
3. WHEN TWO SECTIONS OF FILTER CLOTH ADJACENT OTHER TIES SHALL BE REMOVED AND REPLACED BY SIX INCHES AND REINFORCED.
4. MAINTENANCE SHALL BE PERFORMED AS PREPARED BY THE CONTRACTOR.

**SECTION**

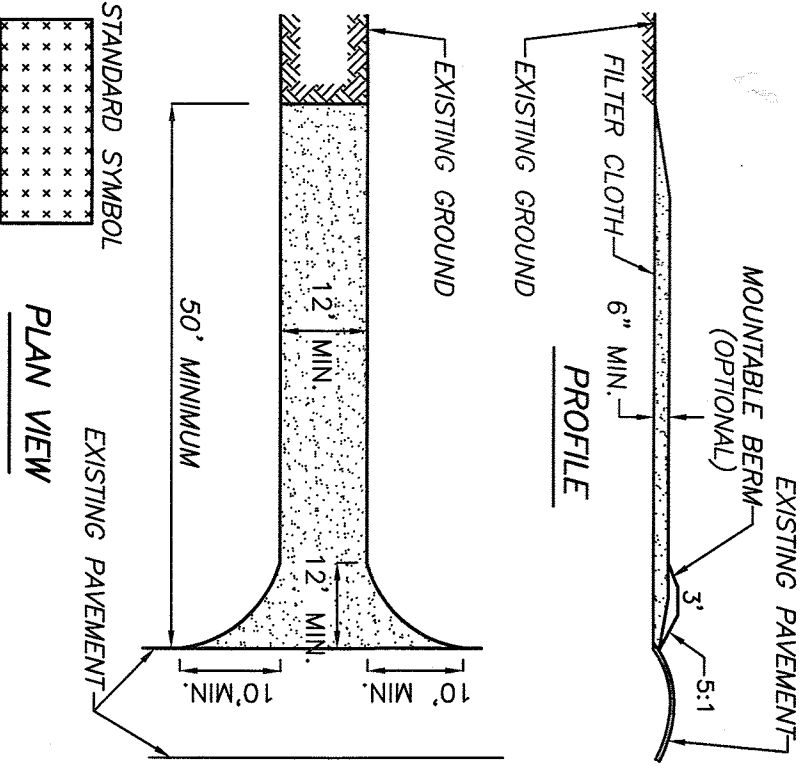


**PERSPECTIVE VIEW**



**WIRE REINFORCED SILT FENCE**

**CONSTRUCTION SPECIFICATIONS**



**STABILIZED CONSTRUCTION ENTRANCE**

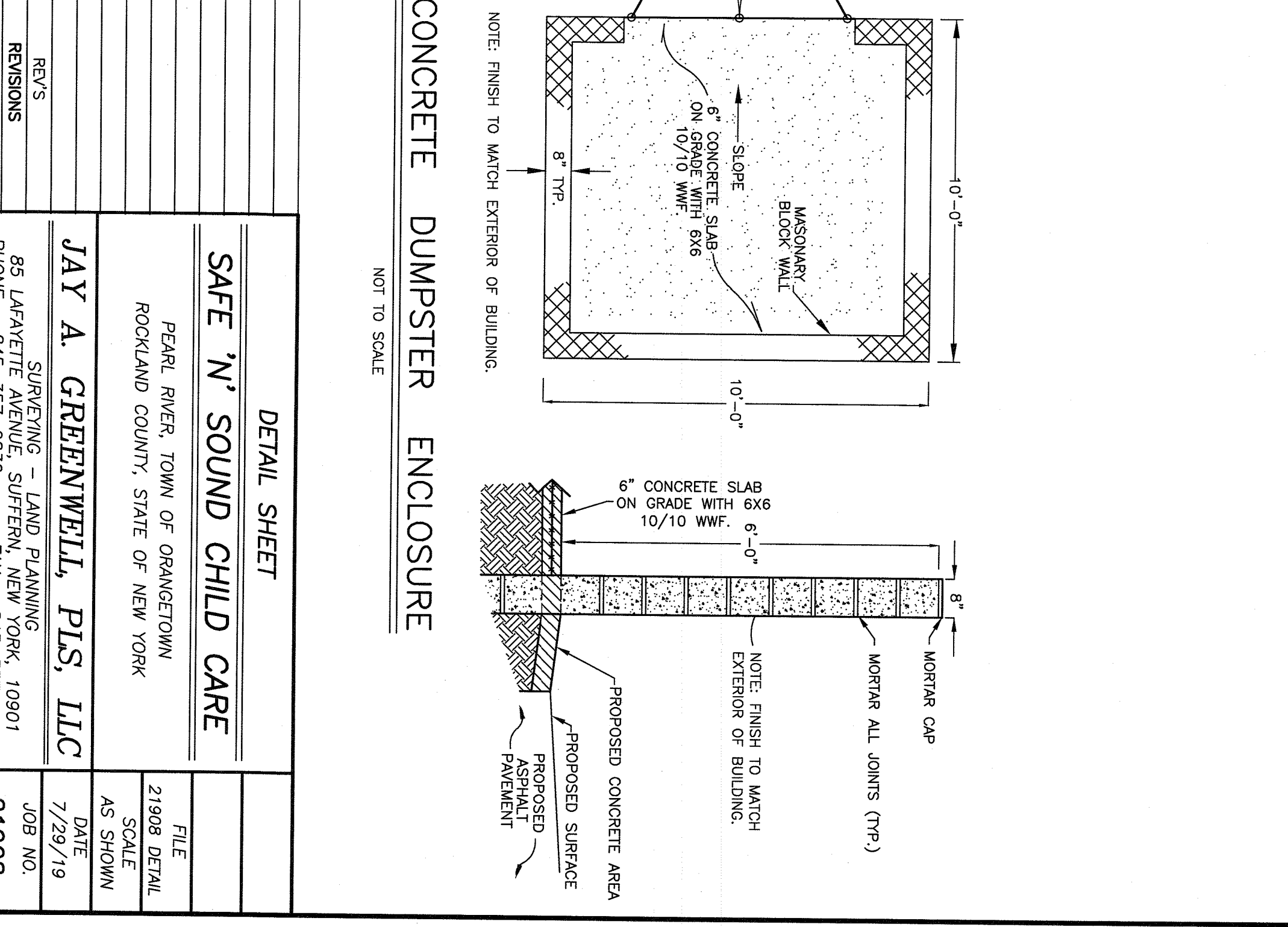
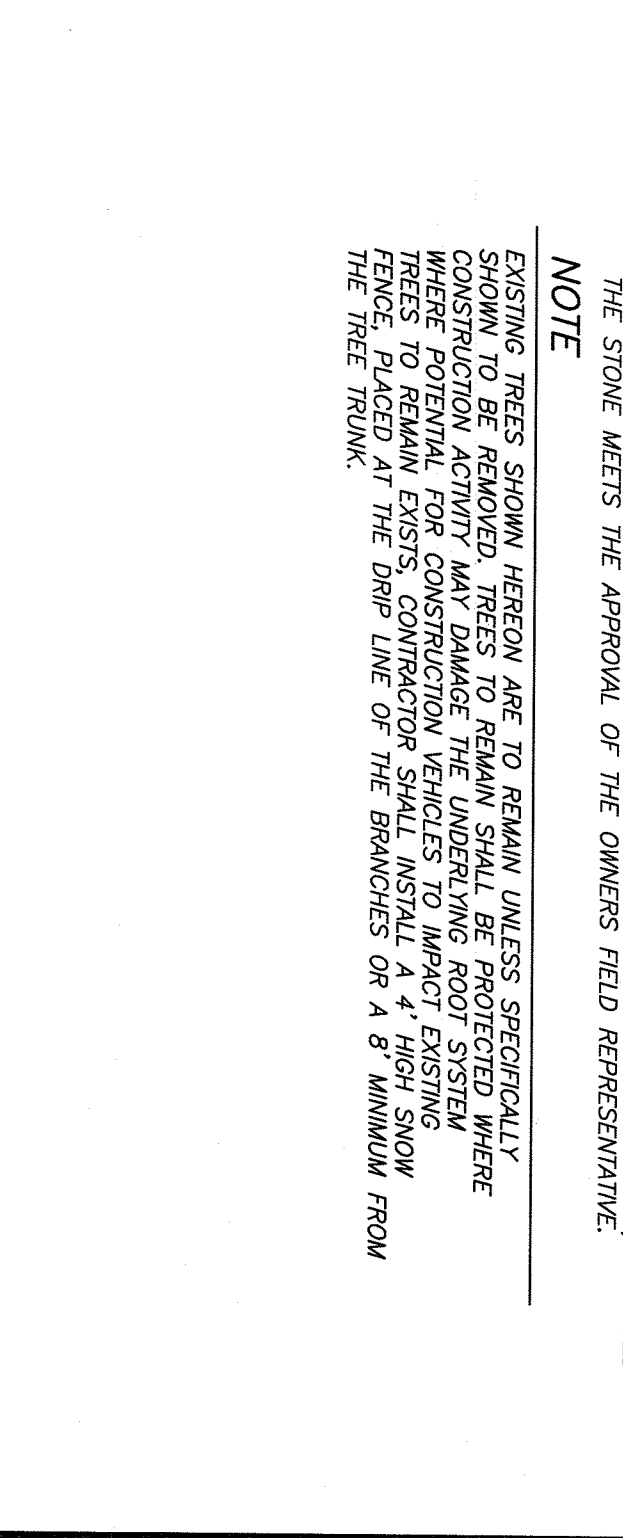
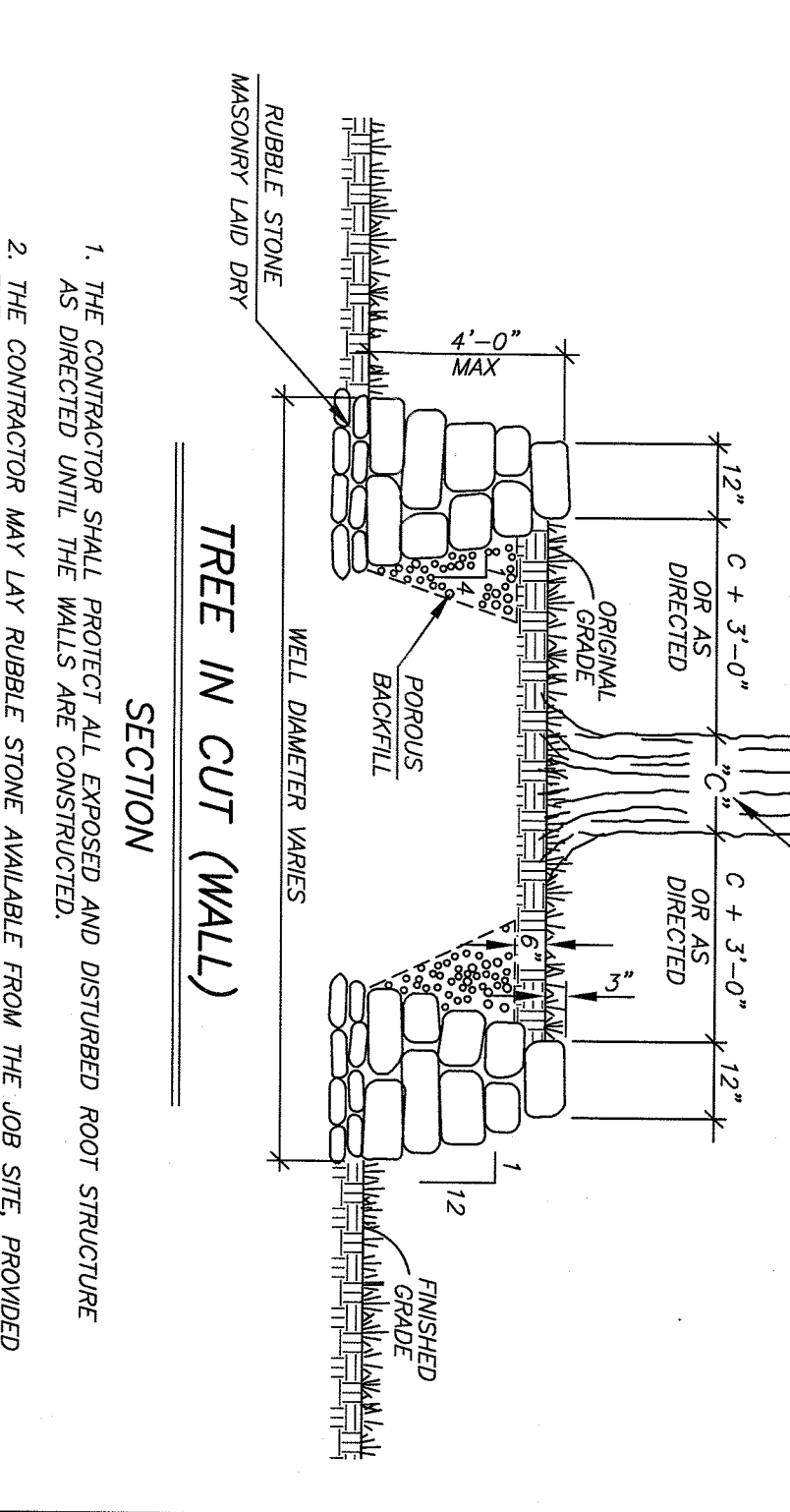
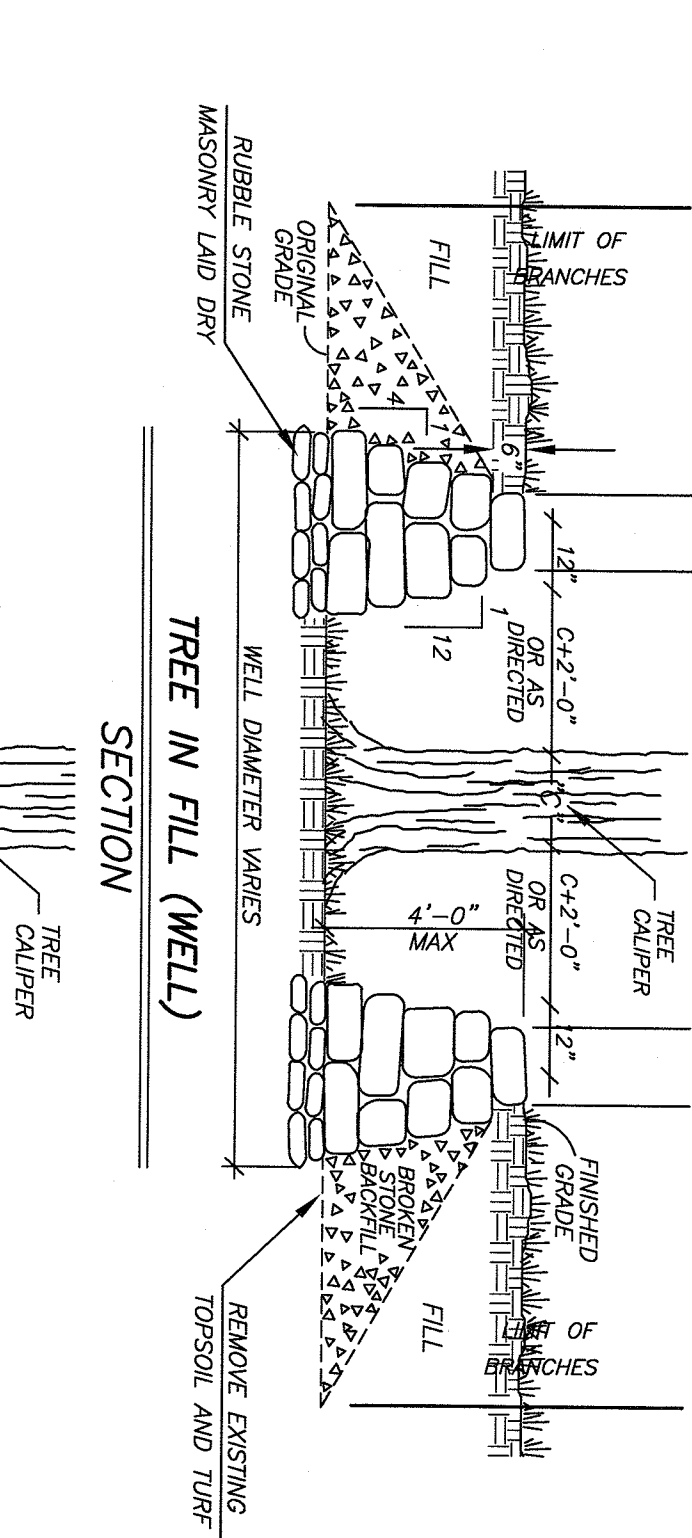
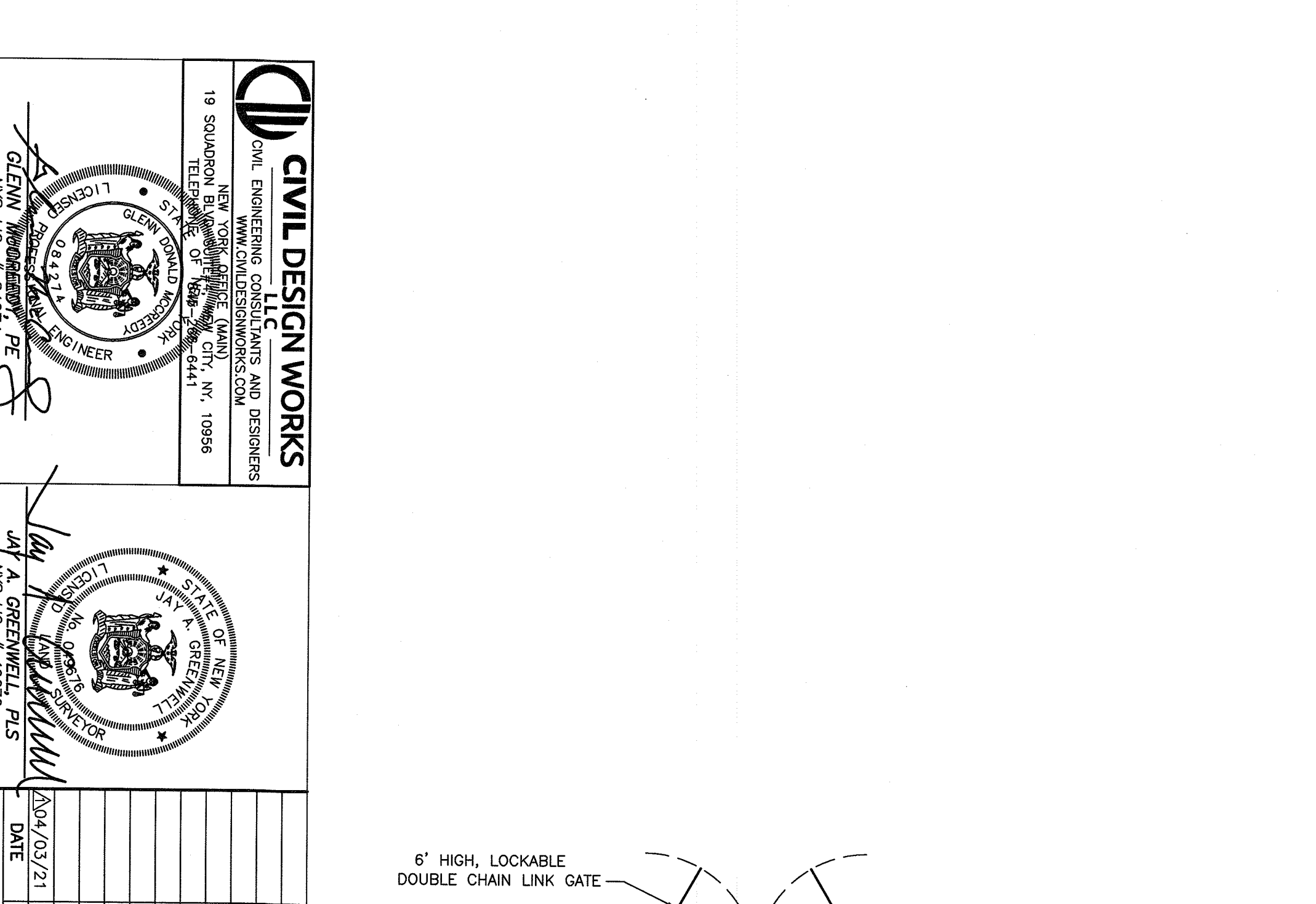
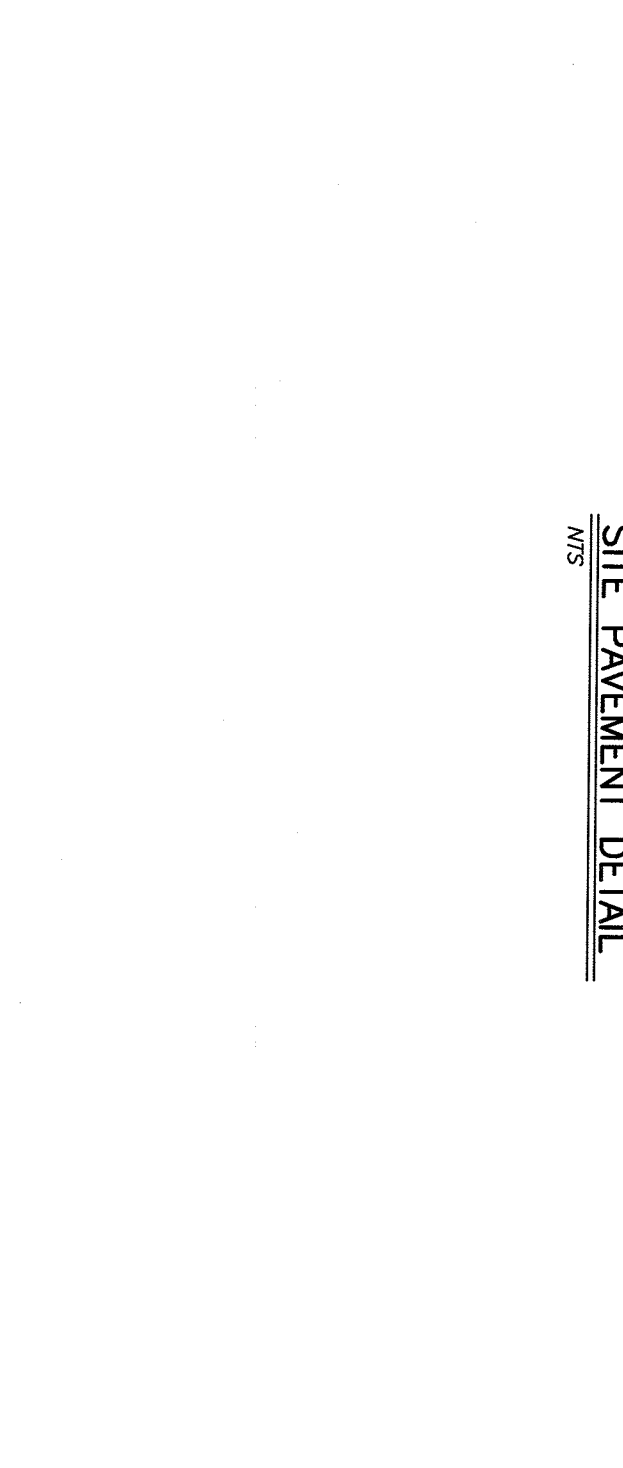
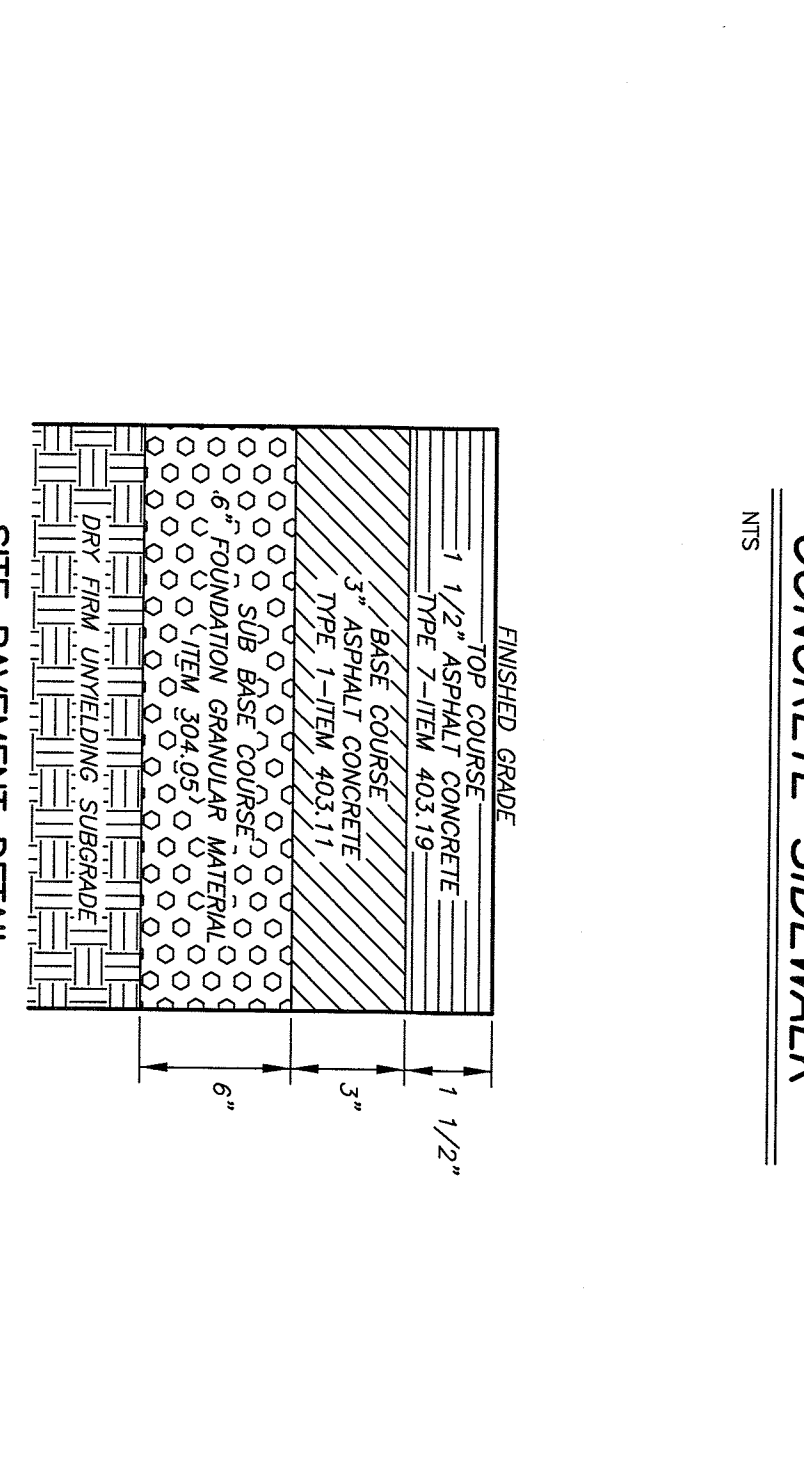
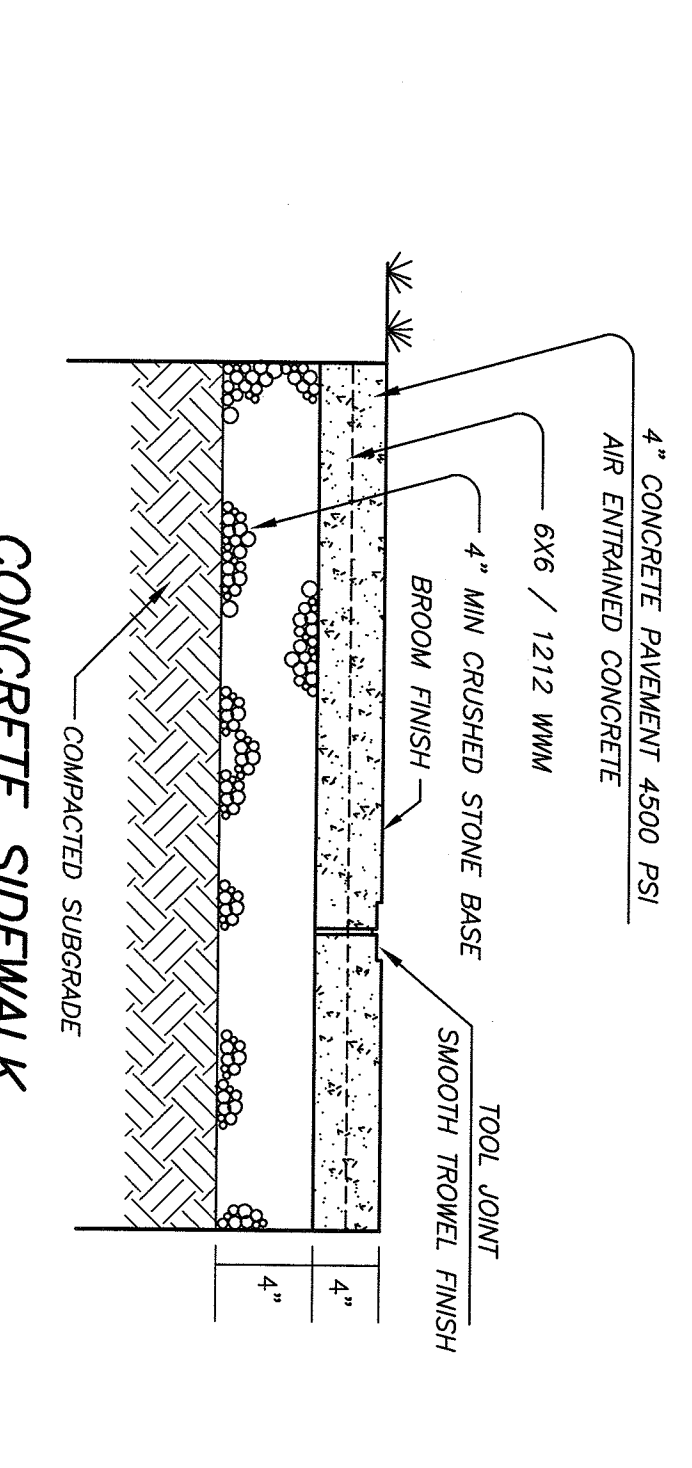
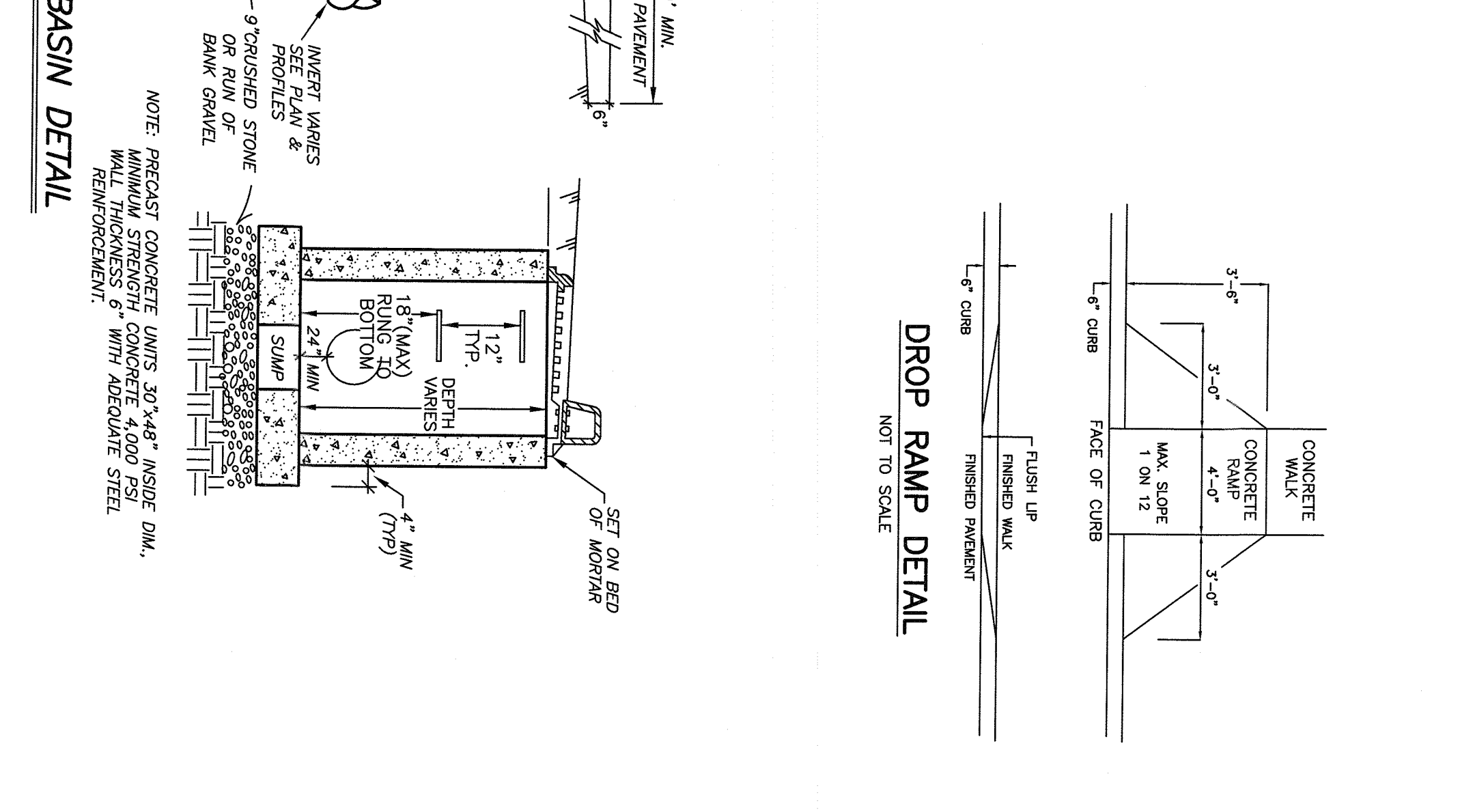
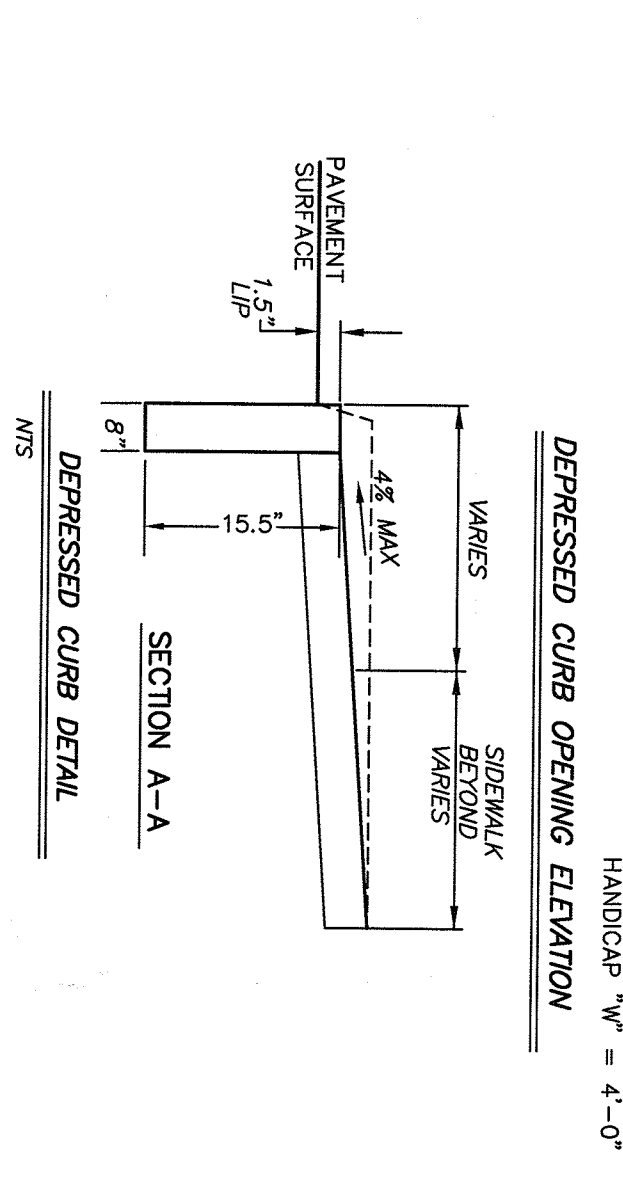
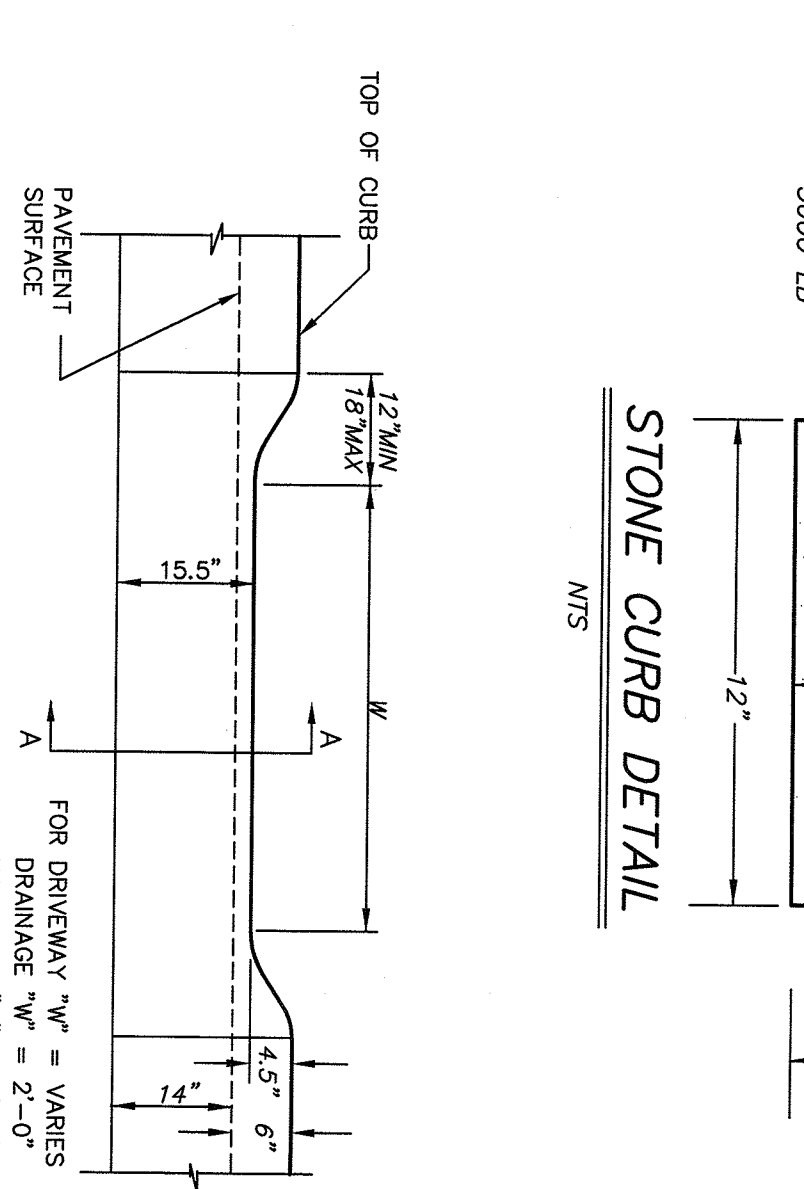
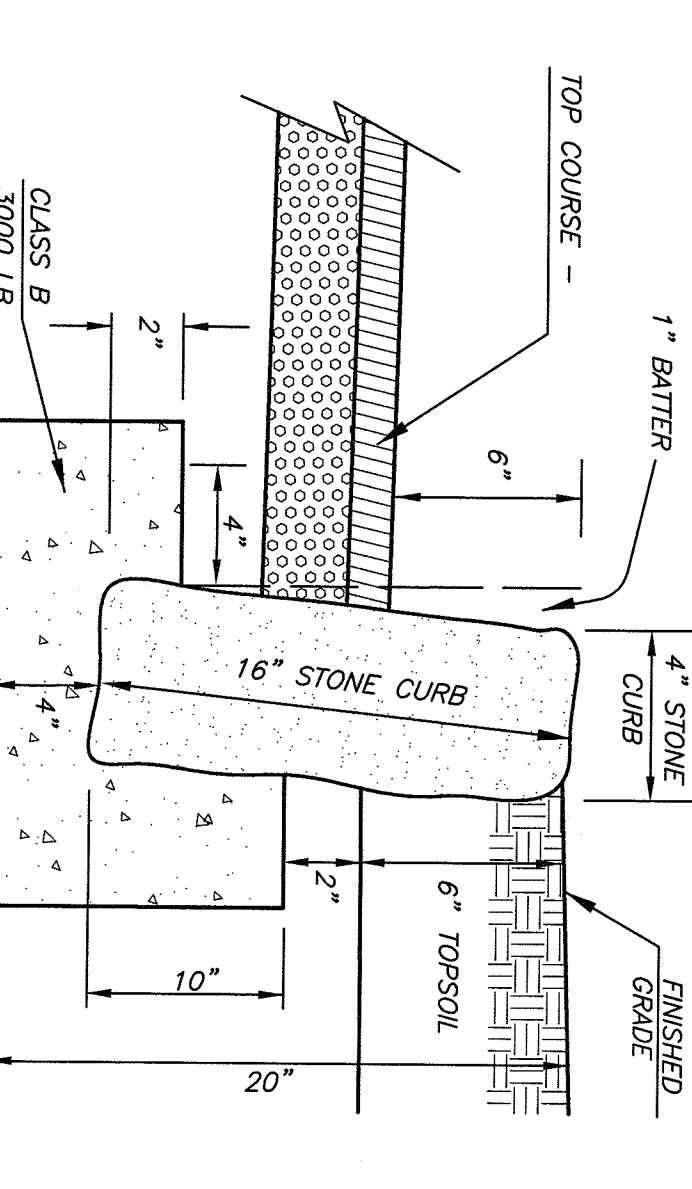
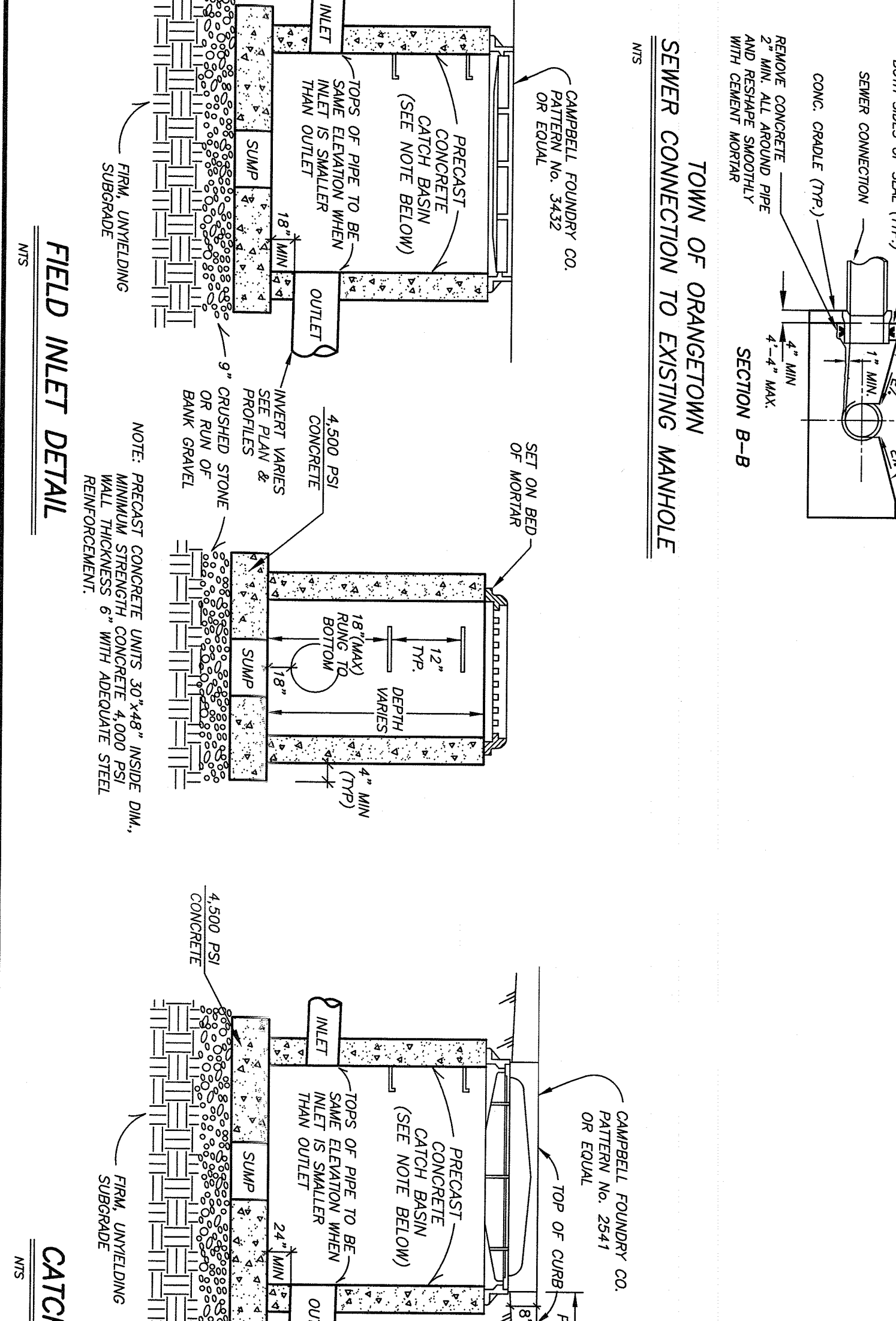
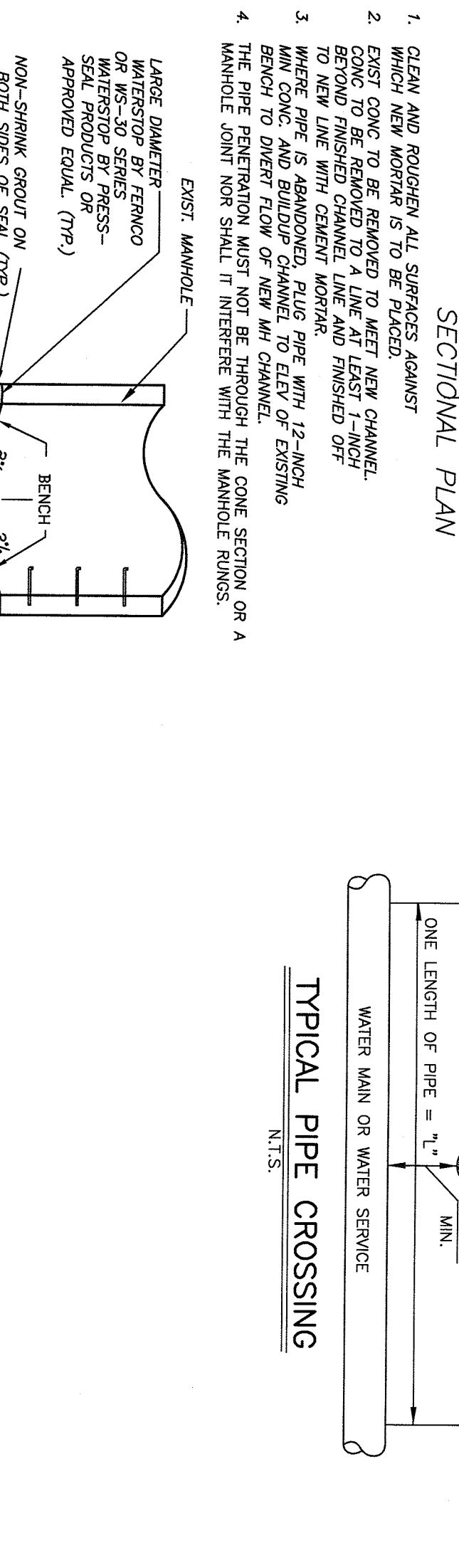
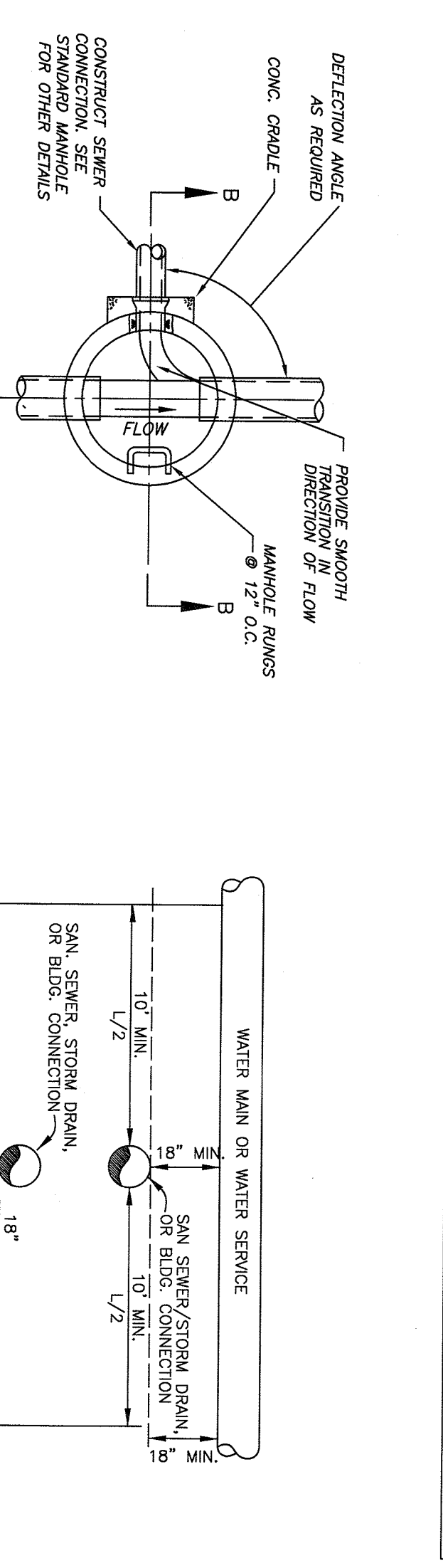
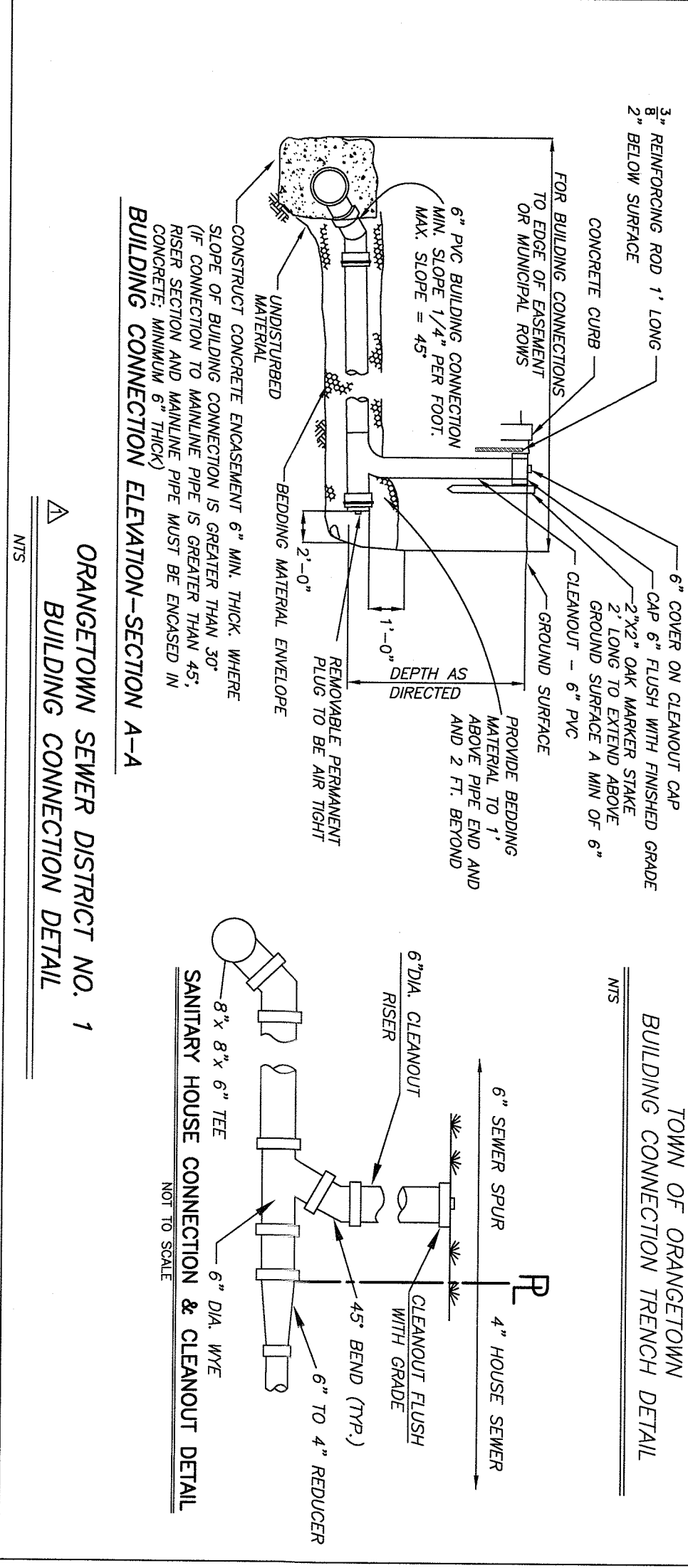
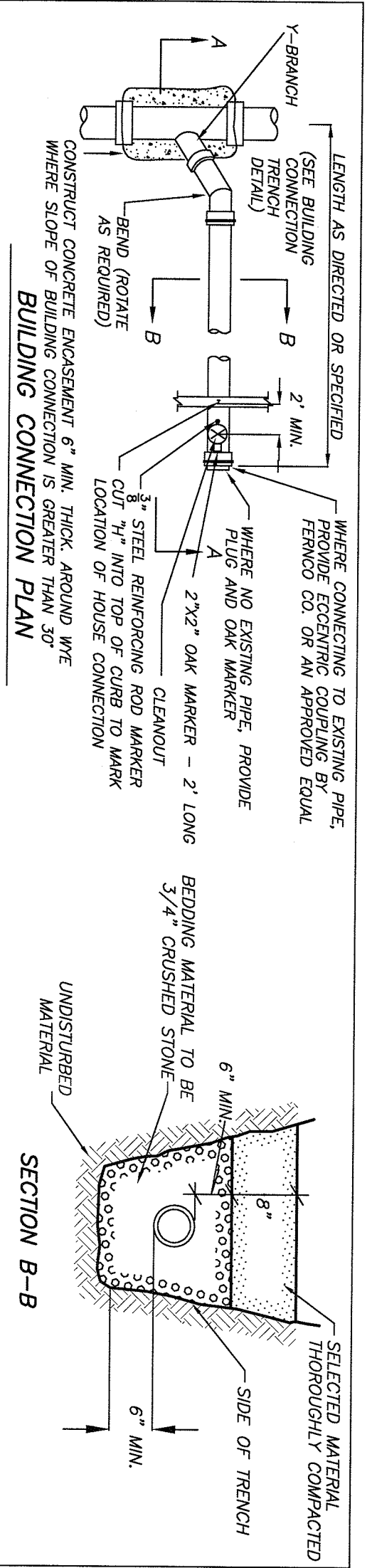
N/S

**CIVIL DESIGN WORKS**  
 CIVIL ENGINEERING CONSULTANTS AND DESIGNERS  
 19 SQUADRON BLVD-SUITE 14, NEW CITY, NY, 10956  
 TEL: 845-386-6441  
 WWW.CIVILDESIGNWORKS.COM

**JAY A. GREENWELL, PLS**  
 LAND PLANNING  
 85 LAFAYETTE AVENUE, SUITE 100, NEW YORK, NY 10001  
 TEL: 845-357-0830  
 FAX: 845-357-0736

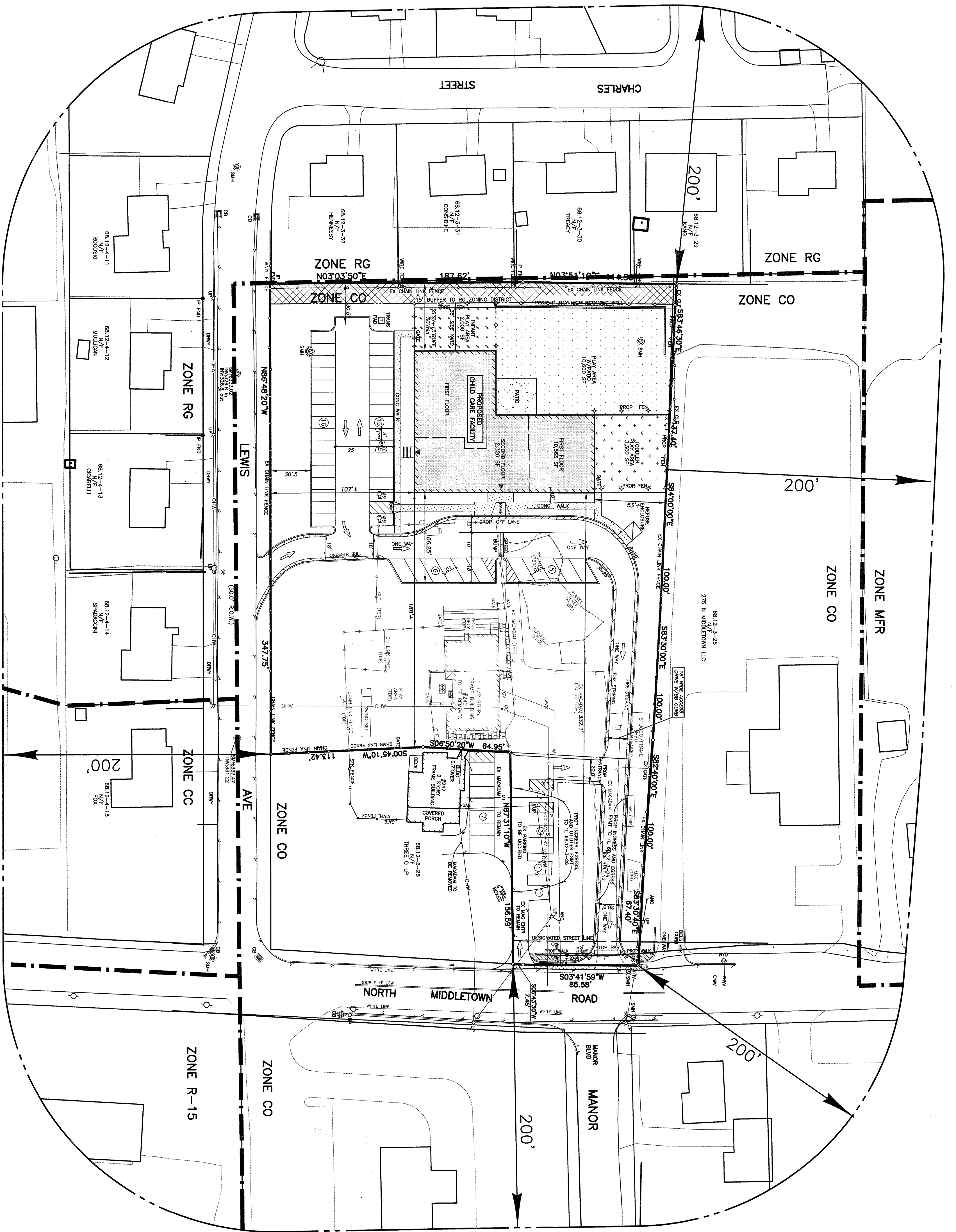
DATE	DATE OF MAP
03/21/19	MARCH 8, 2019
REVISIONS	TRAFFIC PATTERN

TAX LOT #	68.12-3-27
AREA	116,960 SF
FILE	PEARL RIVER, TOWN OF ORANGETOWN
SCALE	1" = 30'
DATE	7/29/19
JOB NO.	21908
SURVEYING - LAND PLANNING	
PHONE 845-357-0830	FAX 845-357-0736



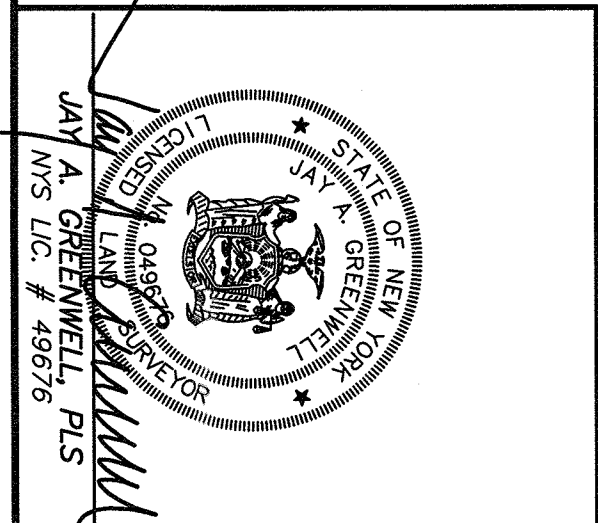
<b>CIVIL DESIGN WORKS LLC</b> CIVIL ENGINEERING CONSULTANTS AND DESIGNERS 19 SQUADRON BLVD., SUITE 200, CITY, NY, 10856 TEL: (718) 942-6441 FAX: (718) 942-6441		
<b>SAFE 'N' SOUND CHILD CARE</b> PEARL RIVER, TOWN OF ORANGETOWN ROCKLAND COUNTY, STATE OF NEW YORK		
<b>JAY A. GREENWELL, PLS, LLC</b> SURVEYING - LAND PLANNING 85 LAURETTE AVENUE, SUFFERN, NEW YORK, 10901 PHONE 845-357-0830 FAX 845-357-0758	DATE 7/29/19 SCALE AS SHOWN JOB NO. 21908	DATE 04/03/21 REVISIONS DATE OF MAP MARCH 8, 2019





**LEGEND**

---	DRAINAGE INLET W/PIPPERS
---	DRAIN MANHOLE WITH PRESS
---	TOP CURB @ CATCH BASIN
---	REINFORCED CONCRETE PIPE
---	COMPOUNDED PLASTIC PIPE
---	UTILITY POLE WITH LIGHT
---	WATER VALVE
---	HYDRANT
---	GAS VALVE
---	IRRIGATION CONTROL VALVE
---	GAS LINE
---	WATER LINE
---	CONTROL LINE
---	SPOT GRADE
---	+520.5



DATE	04/03/21
REVISIONS	TRAFFIC PATTERN

<b>200' RADIUS EXHIBIT</b>	
<b>SAFE 'N' SOUND CHILD CARE</b>	
PEARL RIVER, TOWN OF ORANGETOWN ROCKLAND COUNTY, STATE OF NEW YORK	
<b>JAY A. GREENWELL, PLS, LLC</b>	
SURVEYING - LAND PLANNING 85 LAFAYETTE AVENUE, SUFFERN, NEW YORK, 10901 PHONE 845-357-0830 FAX 845-357-0756	
TAX LOT #	68.12-3-27
AREA	116,960 SF
FILE	21908 EXH
SCALE	1" = 40'
DATE	12/04/19
JOB NO.	21908

**SAFE N SOUND**  
PEARL RIVER  
ROCKLAND COUNTY, NEW YORK

DATE: AUGUST 16, 2019  
DRAWN BY: BMY  
JOB NO: 100117  
SCALE: 1"=30'-0"  
FILENAME: 2021\_0027\_Safe\_n\_Sound

REVISIONS:  
4/28/2021

BMY and BSA | Registered Landscape Architects

SHEET NO:  
**L-601**  
LIGHTING PLAN  
SHEET 1 of 1

- LIGHTING NOTES**
- PROVIDE SWITCHING, TRANSFORMER LAYOUT AND WIRE SIZE FOR REVIEW BY LANDSCAPE ARCHITECT.
  - SIZE LOW VOLTAGE WIRE BASED ON A MAX. ALLOWABLE VOLTAGE DROP BY 50%
  - TRANSFORMERS SIZED TO MAXIMUM CAPACITY OF LIGHT FIXTURE.
  - DESIGN LOAD IS NOT TO EXCEED 80% OF TRANSFORMER CAPACITY.
  - THE WORK IS TO COMPLY WITH ALL APPLICABLE CODES AND STANDARDS AND MEET ALL TESTING REQUIREMENTS.
  - FIXTURE LOCATIONS AND WIRE LAYOUTS ARE DIAGRAMMATIC AND APPROXIMATE. BEFORE INSTALLATION, REVIEW ADJACENT CONTROLS IN AN ORDINARY FASHION TO ALLOW ACCESS AS NECESSARY.
  - REFER TO THE PLAN FOR LIGHT FIXTURE LOCATION. UTILIZE CONDUIT (E) TUBE TO THE [E] SWITCHING WHERE POSSIBLE.
  - BALANCE LOADS TO THE TRANSFORMERS, IDENTIFY CENTER OF LOAD, CONNECT WIRE FROM TRANSFORMER TO CENTER OF LOAD.
  - PROVIDE 100 VOLT POWER TO EACH REMOTE TRANSFORMER CONNECT TO SWITCH IN HOUSE PER DIRECTION AND ACCEPTANCE OF CLIENT.
  - INSTALL FIXTURES PER MANUFACTURER'S INSTRUCTIONS.

**Steel Poles**

Order #	Type
Project	Other
Comments	
Required by	

- FEATURES**
- Hand made poles with 4870A 4.258 inch corner.
  - 10-24" mounting heights.
  - Painted or powder coated.

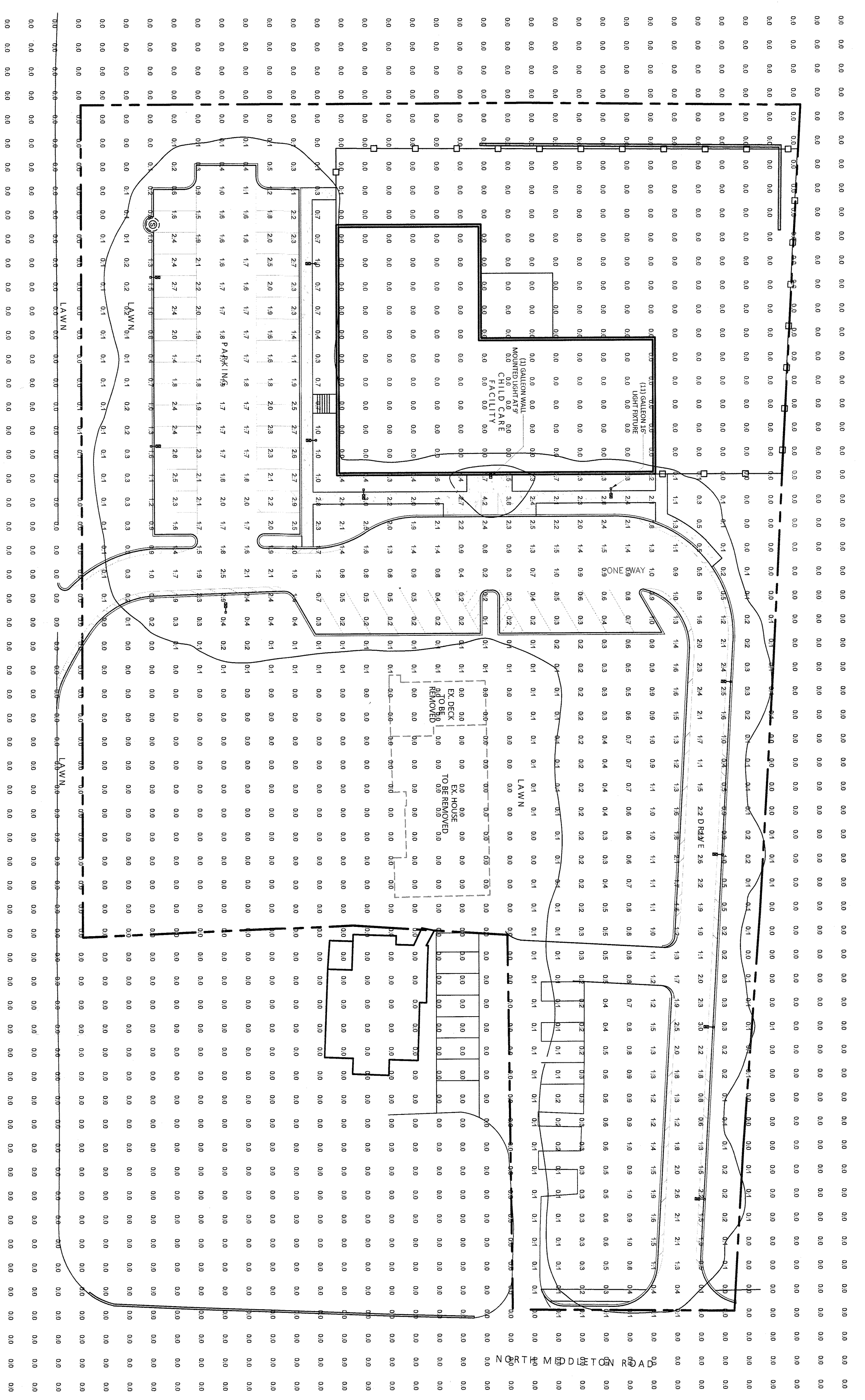
**SSS SQUARE STRAIGHT STEEL**

**DESIGN CONSIDERATIONS**  
This design is intended to provide a general guide for the design of a lighting system. It is not intended to be a final design and should be used in conjunction with the manufacturer's specifications and engineering data. The design is based on the assumption that the lighting system will be installed in a dry location and will be protected from weather. The design is based on the assumption that the lighting system will be installed in a dry location and will be protected from weather. The design is based on the assumption that the lighting system will be installed in a dry location and will be protected from weather.

**STEEL POST**

**LIGHTING SCHEDULE**

SYMBOL	DETAIL	QTY	DESCRIPTION	CATALOG NUMBER	MOUNTING HEIGHT	LAMP
□	I/L-601	11	EATON GALLEON LED POLE MOUNTED FIXTURE TYPE 5-L4	GLEON-AF-O1-LED-EI-5-L4	16'	LED ARRAY
□	I/L-602	1	EATON GALLEON LED WALL MOUNTED FIXTURE TYPE 14FT DISTRIBUTION - 2 LIGHT SQUARES	GMC-AF-O1-LED-EI-14FT-	9'	LED ARRAY



**EATON GALLEON LED LIGHT HEIGHT**  
NOT TO SCALE

**SPECIFICATION FEATURES**  
Eaton aluminum die-cast housing, high-efficiency LED optics are mounted for optimal performance. Heavy-duty die-cast housing provides superior heat sink performance. The Galleon LED fixture is designed to provide superior heat sink performance. The Galleon LED fixture is designed to provide superior heat sink performance. The Galleon LED fixture is designed to provide superior heat sink performance.

**Electrical**  
LED fixtures are mounted for optimal performance. Heavy-duty die-cast housing provides superior heat sink performance. The Galleon LED fixture is designed to provide superior heat sink performance. The Galleon LED fixture is designed to provide superior heat sink performance. The Galleon LED fixture is designed to provide superior heat sink performance.

**Mounting**  
Housing finished in super durable powder coat paint. The Galleon LED fixture is designed to provide superior heat sink performance. The Galleon LED fixture is designed to provide superior heat sink performance. The Galleon LED fixture is designed to provide superior heat sink performance.

**Warranty**  
Five-year warranty.

**1-10 Light Senses Solid State LED**

**GLEON GALLEON LED**

**CERTIFICATION DATA**  
UL Type 1 LED  
UL Type 1 LED  
UL Type 1 LED

**ENERGY DATA**  
Energy Efficient  
Energy Efficient  
Energy Efficient

**DIMENSIONS**  
31.5" H  
18" W  
18" D

**SHIPPING DATA**  
Weight: 112 lbs  
Volume: 112 cu ft

**EATON GALLEON WALL**  
NOT TO SCALE

**SPECIFICATION FEATURES**  
Eaton aluminum die-cast housing, high-efficiency LED optics are mounted for optimal performance. Heavy-duty die-cast housing provides superior heat sink performance. The Galleon LED fixture is designed to provide superior heat sink performance. The Galleon LED fixture is designed to provide superior heat sink performance. The Galleon LED fixture is designed to provide superior heat sink performance.

**Electrical**  
LED fixtures are mounted for optimal performance. Heavy-duty die-cast housing provides superior heat sink performance. The Galleon LED fixture is designed to provide superior heat sink performance. The Galleon LED fixture is designed to provide superior heat sink performance. The Galleon LED fixture is designed to provide superior heat sink performance.

**Mounting**  
Housing finished in super durable powder coat paint. The Galleon LED fixture is designed to provide superior heat sink performance. The Galleon LED fixture is designed to provide superior heat sink performance. The Galleon LED fixture is designed to provide superior heat sink performance.

**Warranty**  
Five-year warranty.

**1-2 Light Senses Solid State LED**

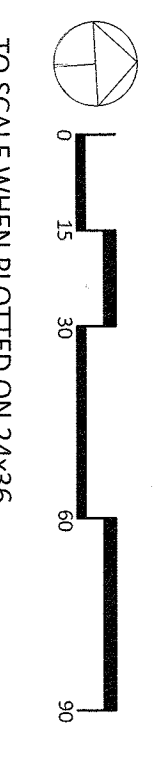
**GMC GALLEON WALL**

**CERTIFICATION DATA**  
UL Type 1 LED  
UL Type 1 LED  
UL Type 1 LED

**ENERGY DATA**  
Energy Efficient  
Energy Efficient  
Energy Efficient

**DIMENSIONS**  
15.5" H  
18" W  
18" D

**SHIPPING DATA**  
Weight: 27 lbs  
Volume: 27 cu ft



TO SCALE WHEN PLOTTED ON 24x36  
PROGRESS SET NOT FOR CONSTRUCTION

**SAFE N SOUND**  
PEARL RIVER  
ROCKLAND COUNTY, NEW YORK

DATE: AUGUST 16, 2019  
DRAWN BY: BMY  
JOB NO: 100117  
SCALE: 1"=30'-0"  
FILENAME: 2021\_0827\_Safe n Sound

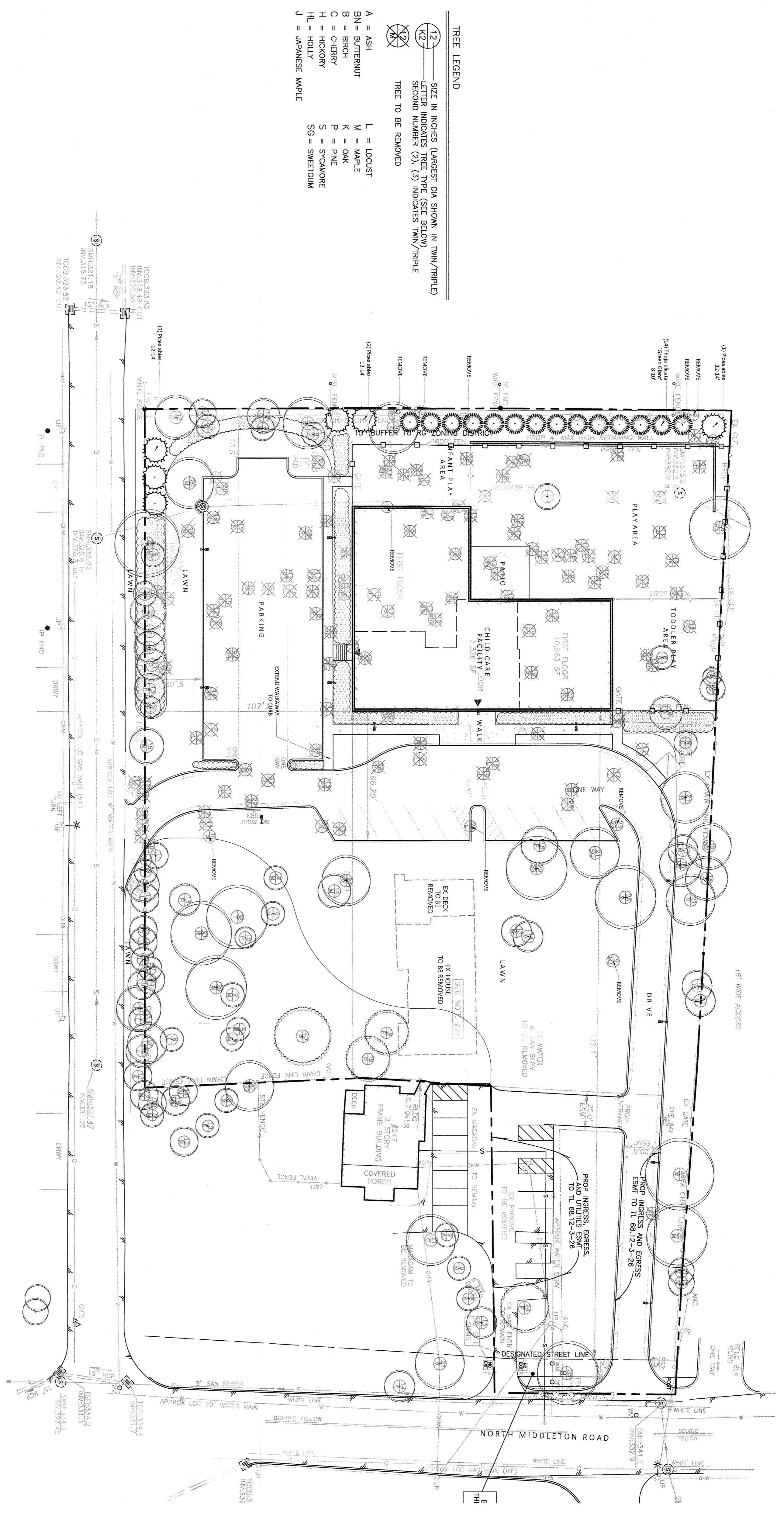
REVISIONS:  
4/28/2021

Bryden W. Yost SCLA | Registered Landscape Architect  
**CONCEPTUAL  
PLANTING PLAN**

SHEET NO.

**L-701**

SHEET: 1 of 1



- TREE LEGEND**
- 1, 2, 3 SITE 'N' INCHES (LARGEST DIA SHOWN IN TWIN/TRIPLE)  
LETTER INDICATES TREE TYPE (SEE BELOW)  
SECOND NUMBER (2), (3) INDICATES TWIN/TRIPLE
- TREE TO BE REMOVED
- A = ASH
  - BN = BUTTERNUT
  - B = BIRCH
  - C = CHERRY
  - H = HICKORY
  - HL = HOLLY
  - J = JAPANESE MAPLE
  - L = LOCUST
  - M = MAPLE
  - K = OAK
  - P = PINE
  - S = Sycamore
  - SG = SWEETGUM

TO SCALE WHEN PLOTTED ON 24x36  
PROGRESS SET NOT FOR CONSTRUCTION