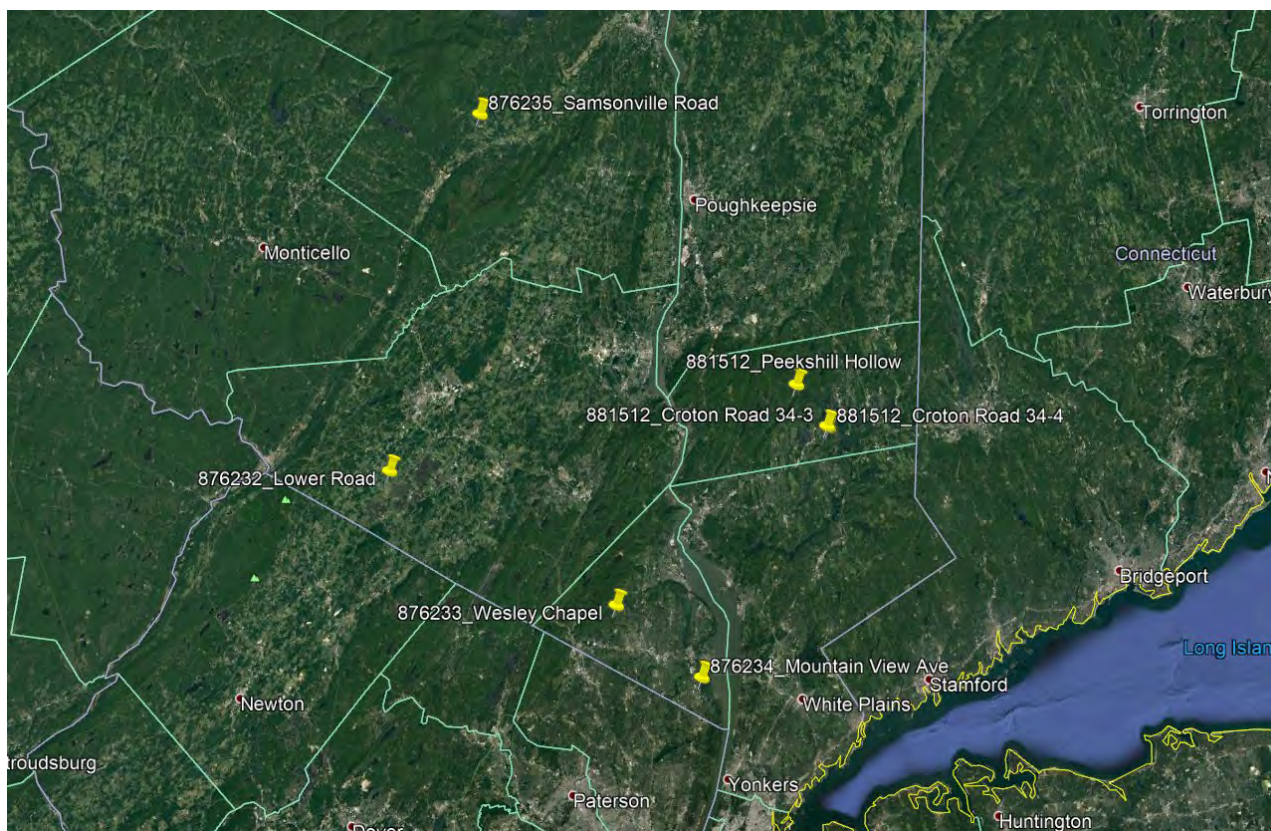




PIN: 8762.34
Mountainview Avenue – Culvert Replacement Project
NYSDOT 2018 BridgeNY Program

Project Overview

- ➔ NYSDOT's Project – Bridge NY Culvert Rehabilitation or Replacement – Bundle #5
- ➔ Bundle #5 contains a total of 5 culvert replacements and 2 rehabilitations.
- ➔ Anticipated Letting date: May 2021.
- ➔ Anticipated Completion date: December 2022.

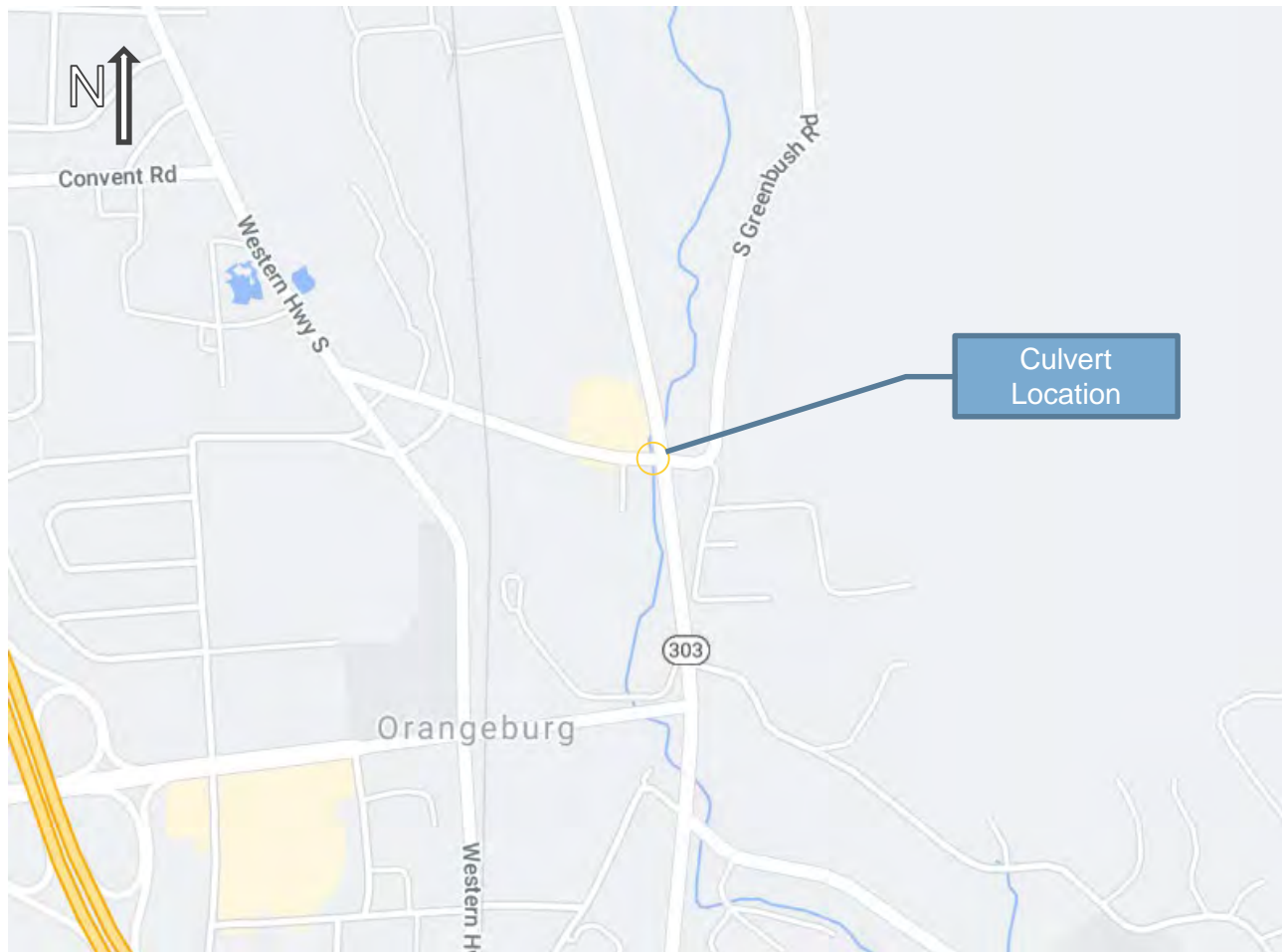


Location map showing all culverts in Bundle#5 of D037731

Project Location

➔ Existing Condition of the Culvert:

- ❑ Culvert embankment is eroding, and water is undermining the structure
- ❑ Culvert has inadequate hydraulic capacity



Existing Culvert



Looking southeast towards upstream side of Mountainview Avenue culvert

Existing Culvert



Looking north towards downstream side of Mountainview Avenue culvert

Existing Culvert



Looking north and upstream from Mountainview Avenue Culvert

Existing Culvert



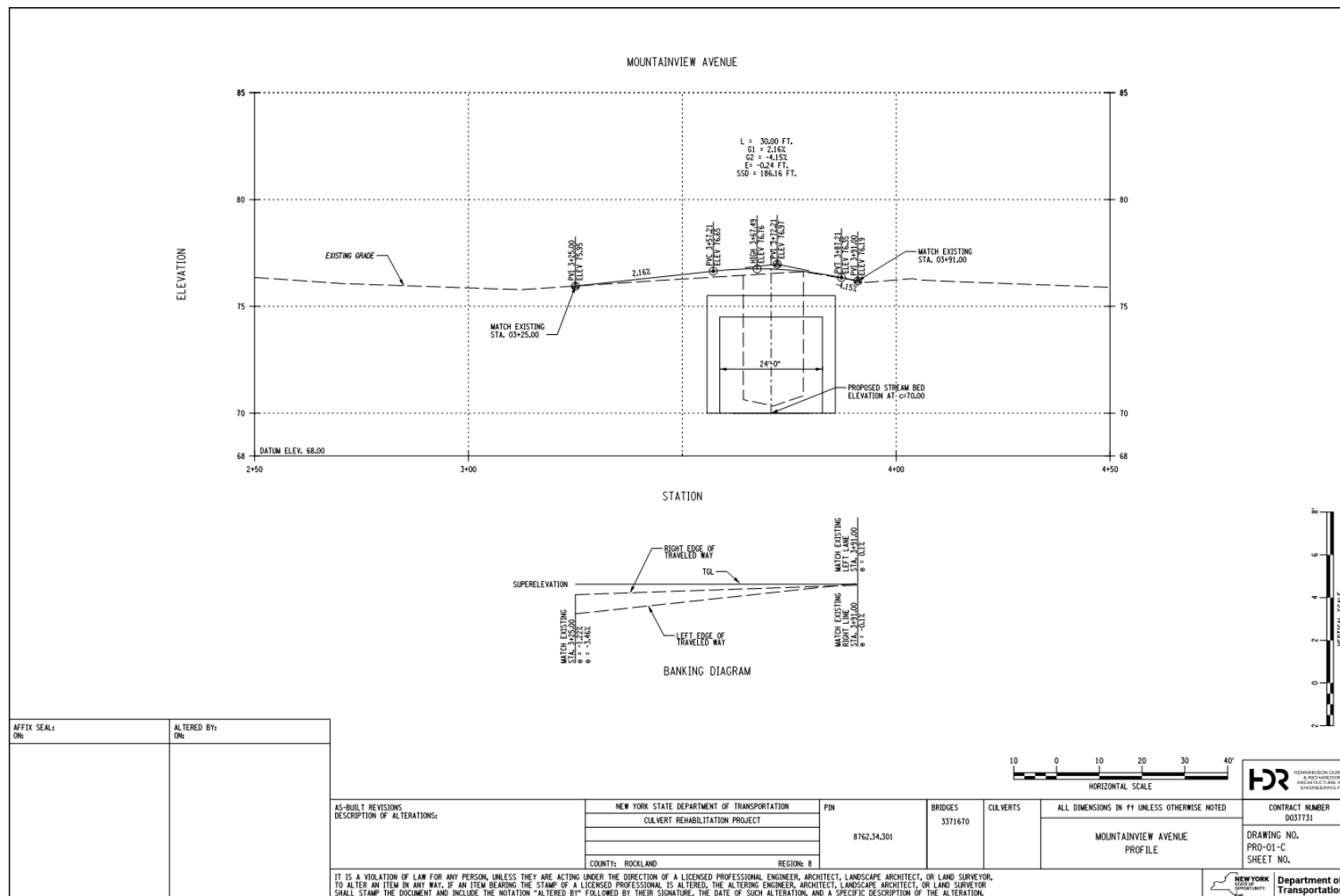
Looking south and downstream from Mountainview Avenue Culvert

Proposed Culvert

- ➔ Proposed Mountainview Avenue Culvert Replacement:
 - ❑ The project includes full replacement of the existing culvert with a new bridge
 - ❑ Full depth asphalt replacement of the road
 - ❑ New guide rail will be installed



Profile



Typical Sections

NOTES:

1. TACK COAT SHALL BE APPLIED TO ALL SURFACES RECEIVING OVERLAY COURSES (EXCEPT SUBBASE COURSE) PRIOR TO PLACEMENT OF EACH ASPHALT LIFT.
2. MAXIMUM ROLLOVER BETWEEN THE TRAVEL LANE AND SHOULDER SHALL BE 3%.
3. INSTALL ROLLED EROSION CONTROL PRODUCT ON ALL SLOPES GREATER THAN 1:1.
4. REFER TO GENERAL PLANS FOR LANE AND SHOULDER WIDTH TRANSITIONS AND PROFILES FOR PAVEMENT SLOPE TRANSITIONS.

TYPICAL MILL AND OVERLAY SECTION
NOT TO SCALE

MOUNTAINVIEW AVENUE
HCL/TGL
APPROXIMATE HIGHWAY BOUNDARY VARIES 4'-0" TO 50'-0"

VARIES 30'-0" TO 41'-0"

VARIES 14'-0" TO 23'-0"

VARIES 12'-0" TO 14'-0"

2'-0" SHOULDER

ITEM 490.30 1.5"

ITEM 407.0102

ITEM 418.7603

ITEM 402.098303 - 1.5"

EXISTING PAVEMENT

ITEM 606.10

ITEM 608.020102

ITEM 610.1402

TYPICAL FULL DEPTH RECONSTRUCTION SECTION
NOT TO SCALE

MOUNTAINVIEW AVENUE
HCL/TGL
APPROXIMATE HIGHWAY BOUNDARY VARIES 4'-0" TO 50'-0"

VARIES 30'-0" TO 41'-0"

VARIES 14'-0" TO 23'-0"

VARIES 12'-0" TO 14'-0"

2'-0" SHOULDER

ITEM 608.0101

ITEM 610.1402

PROPOSED GRADE 2:1 MAX

ITEM 608.020102

ITEM 304.15, 6"

ITEM 609.0901

ITEM 407.0102

ITEM 203.02

ITEM 418.7603

ITEM 402.098103 - 1.5"

ITEM 402.198903 - 2.5"

ITEM 402.378903 - 6"

ITEM 304.15 - 12"

ITEM 203.20 - 18"

ITEM 606.10

ITEM 608.020102

ITEM 610.1402

ITEM	DESCRIPTION	UNIT
203.02	UNCLASSIFIED EXCAVATION AND DISPOSAL	CY
203.03	EMBANKMENT IN PLACE	CY
203.20	SELECT GRANULAR SUBGRADE	CY
209.190301	ROLLED EROSION CONTROL PRODUCT, CLASS II TYPE C, INTERMEDIATE	CY
304.15	SUBBASE COURSE, OPTIONAL TYPE	TON
402.098103	9.5 F1 TOP COURSE HMA, 80 SERIES COMPACTION	TON
402.198903	19 F9 BINDER COURSE HMA, 80 SERIES COMPACTION	TON
402.378903	37.5 F9 BASE COURSE HMA, 80 SERIES COMPACTION	TON
407.0102	DILUTED TACK COAT	LF
418.7603	ASPHALT PAVEMENT JOINT ADHESIVE	LF
490.30	MISCELLANEOUS COLD MILLING OF BITUMINOUS CONCRETE	LF
606.10	BOX BEAM GUIDE RAILING	LF
608.0101	CONCRETE SIDEWALKS AND DRIVEWAYS	CY
608.020102	HOT MIX ASPHALT VEGETATION CONTROL STRIP	TON
609.0901	OPTIONAL CURB (CAST-IN-PLACE TYPE VF150)	LF
610.1402	TOPSOIL - ROADSIDE	CY

AS-BUILT REVISIONS
DESCRIPTION OF ALTERATIONS:

NEW YORK STATE DEPARTMENT OF TRANSPORTATION
CULVERT REHABILITATION PROJECT

PROJECT NO. 8762.34.301

COUNTY: ROCKLAND REGION: 8

BRIDGES 3371670

CULVERTS

ALL DIMENSIONS IN FT UNLESS OTHERWISE NOTED

MOUNTAINVIEW AVENUE
TYPICAL SECTION

CONTRACT NUMBER D037731

DRAWING NO.

SHEET NO.

IT IS A VIOLATION OF LAW FOR ANY PERSON, UNLESS THEY ARE ACTING UNDER THE DIRECTION OF A LICENSED PROFESSIONAL ENGINEER, ARCHITECT, LANDSCAPE ARCHITECT, OR LAND SURVEYOR, TO ALTER AN ITEM IN ANY WAY. IF AN ITEM BEARING THE STAMP OF A LICENSED PROFESSIONAL IS ALTERED, THE ALTERING ENGINEER, ARCHITECT, LANDSCAPE ARCHITECT, OR LAND SURVEYOR SHALL STAMP THE DOCUMENT AND INCLUDE THE NOTATION "ALTERED BY" FOLLOWED BY THEIR SIGNATURE, THE DATE OF SUCH ALTERATION, AND A SPECIFIC DESCRIPTION OF THE ALTERATION.

NEW YORK STATE OF OPPORTUNITY

Department of Transportation

Detour

Culvert Replacement will require road closure and detour.

LOCATION	SIGN	MUTCD NO.	COLOR	SIZE(S)	LOCATION	SIGN	MUTCD NO.	COLOR	SIZE(S)
A		W20-2	BLACK ON ORANGE	36" X 36"	J*		NYM3-2	BLACK ON WHITE	30" X 24"
B		M4-8a	BLACK ON ORANGE	24" X 18"			MX-X	BLACK ON WHITE	21" X 15"
		XX-XX	XXX	XX" X XX"			(SEE NUMBERED LOCATION LIST FOR APPROPRIATE SIGN)		
C		M4-8a	BLACK ON ORANGE	24" X 18"	X*		NYM3-2	BLACK ON WHITE	30" X 24"
		NYM3-2	BLACK ON WHITE	30" X 24"			MX-X	BLACK ON WHITE	21" X 15"
							(SEE NUMBERED LOCATION LIST FOR APPROPRIATE SIGN)		
D		M4-8	BLACK ON ORANGE	24" X 12"	1		M5-1	BLACK ON WHITE	21" X 15"
		XX-XX	XXX	XX" X XX"	2		M6-1	BLACK ON WHITE	21" X 15"
					3		M5-1	BLACK ON WHITE	21" X 15"
D*		M4-8	BLACK ON ORANGE	24" X 12"	4		M6-1	BLACK ON WHITE	21" X 15"
		XX-XX	XXX	XX" X XX"	5		M5-2	BLACK ON WHITE	21" X 15"
		MX-X	BLACK ON WHITE	21" X 15"	6		M6-2	BLACK ON WHITE	21" X 15"
					7		M6-3	BLACK ON WHITE	21" X 15"
					8		M4-10R	BLACK ON ORANGE	48" X 18"
E		M4-8	BLACK ON ORANGE	24" X 12"	9		M4-10L	BLACK ON ORANGE	48" X 18"
		NYM3-2	BLACK ON WHITE	30" X 24"					
E*		M4-8	BLACK ON ORANGE	24" X 12"					
		NYM3-2	BLACK ON WHITE	30" X 24"					
		MX-X	BLACK ON WHITE	21" X 15"					
F		R11-3a	BLACK ON WHITE	60" X 30"					
H		R11-2	BLACK ON WHITE						

LEGEND	
	ITEM 619.01 - CONSTRUCTION SIGNS
	PROPOSED SIGN LOCATION ID
	LOCAL ROAD
	STATE OR COUNTY ROUTE
	DETOUR ROUTE

AFFIX SEAL: ON:		ALTERED BY: ON:	
AS-BUILT REVISIONS: DESCRIPTION OF ALTERATIONS:		NEW YORK STATE DEPARTMENT OF TRANSPORTATION	
		CULVERT REHABILITATION PROJECT	
		PIN 8762.34.301	
		BRIDGES 3371670	
		CULVERTS	
		ALL DIMENSIONS IN FT UNLESS OTHERWISE NOTED	
		MOUNTAINVIEW AVENUE	
		WORK ZONE TRAFFIC CONTROL PLAN	
		DETOUR PLAN	
IT IS A VIOLATION OF LAW FOR ANY PERSON, UNLESS THEY ARE ACTING UNDER THE DIRECTION OF A LICENSED PROFESSIONAL ENGINEER, ARCHITECT, LANDSCAPE ARCHITECT, OR LAND SURVEYOR, TO ALTER AN ITEM IN ANY WAY, IF AN ITEM BEARING THE STAMP OF A LICENSED PROFESSIONAL IS ALTERED, THE ALTERING ENGINEER, ARCHITECT, LANDSCAPE ARCHITECT, OR LAND SURVEYOR SHALL STAMP THE DOCUMENT AND INCLUDE THE NOTATION "ALTERED BY" FOLLOWED BY THEIR SIGNATURE, THE DATE OF SUCH ALTERATION, AND A SPECIFIC DESCRIPTION OF THE ALTERATION.		HENDERSON CURRY & HARRISON ARCHITECTS/ENGINEERS/PLANNERS	
		CONTRACT NUMBER D037731	
		DRAWING NO. WZTC-02-C	
		SHEET NO.	
		Department of Transportation	

Contact Information for Additional Inquiries

- ➔ Stephen Munno – Town of Orangetown
 - ☐ (845) 359-6500
 - ☐ smunno@orangetown.com
- ➔ Michael P. Burgess, P.E. – NYSDOT
 - ☐ (315) 785-2351
 - ☐ michael.burgess@dot.ny.gov
- ➔ Robert V. Brunner, Jr., M.ASCE, PE – Project Manager, HDR
 - ☐ (914) 993-2033
 - ☐ robert.brunner@hdrinc.com