





**IMPERVIOUS SURFACE CALCULATIONS**

LOT	NEW IMPERVIOUS SURFACE AREA	IMPERVIOUS SURFACE AREA TO BE REMOVED	NET IMPERVIOUS SURFACE AREA
LOT 1	3,120 SF	NONE	3,120 SF
LOT 2	3,102 SF	-350 SF	2,752 SF
LOT 3	3,238 SF	-986 SF	2,252 SF
LOT 4	4,391 SF	-2905 SF	1,486 SF
LOT 5	3,127 SF	-3,113 SF	14 SF
<b>TOTAL</b>	<b>16,978 SF</b>	<b>-7,354 SF</b>	<b>9,624 SF</b>

74.18-2-35  
N/F  
TAPPAN FIRE DISTRICT

AREA OF DISTURBANCE= 55,935 SF  
ARDA=1,284 AC

- TREE LEGEND**
- (12) SIZE IN INCHES (LARGEST DIA SHOWN IN THIN/TRIPLE)
  - (12) LETTER INDICATES TREE TYPE (SEE BELOW)
  - (2) SECOND NUMBER (2), (3) INDICATES TWIN/TRIPLE
- A = ASH
  - BN = BUTTERNUT
  - B = BIRCH
  - C = CHERRY
  - CW = COTTONWOOD
  - L = LOCUST
- M = MAPLE
  - MC = MAGNOLIA
  - K = OAK
  - P = PINE
- (12) TREE TO BE REMOVED
  - (12) TREE TO BE PROTECTED

**GDANSKI CONSULTANTS, INC.**  
25 AVENUE DRIVE  
SUFFERN, NEW YORK, 10901

PAUL GDANSKI, PE  
NYS LIC. 073980

**JAY A. GREENWELL, PLS.**  
JAY A. GREENWELL, PLS.  
NYS LIC. # 45976

**GRADING, DRAINAGE AND UTILITY PLAN**

**SMK GREENE**  
TAPPAN, TOWN OF ORANGETOWN  
ROCKLAND COUNTY, STATE OF NEW YORK

**JAY A. GREENWELL, PLS., LLC**  
SUNDERLING - LAND PLANNING  
85 LAFAYETTE AVENUE, SUFFERN, NEW YORK, 10901  
PHONE: 845-357-0530 FAX: 845-357-0756  
© 2020 JAY A. GREENWELL, PLS., LLC

TAX LOT #	74.18-2-34
AREA	76,014 SF
FILE	76.014 SF
SCALE	1" = 20'
DATE	7/10/20
JOB NO.	21948

**LEGEND**

- DRAINAGE INLET W/PRESS
- DRAIN MANHOLE WITH PIPES
- TOP CURB @ CATCH BASIN
- TOP GRADE FIELD INLET
- REINFORCED CONCRETE PIPE
- CORRUGATED PLASTIC PIPE
- UTILITY POLE WITH LIGHT
- WATER VALVE
- HYDRANT
- GAS VALVE
- OVERHEAD WIRES
- GAS LINE
- GAS, ELEC, TEL
- WATER LINE
- GAS, ELEC, TEL, CATV
- CATV, TEL
- ROOF LEADER
- CONTOUR LINE
- SPOT GRADE
- PROPOSED CONTOUR LINE
- PROPOSED SPOT GRADE

**LEGEND**

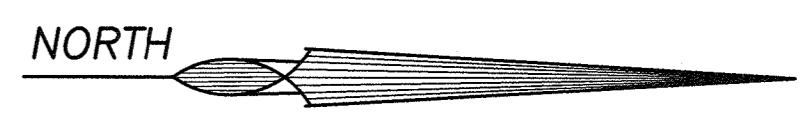
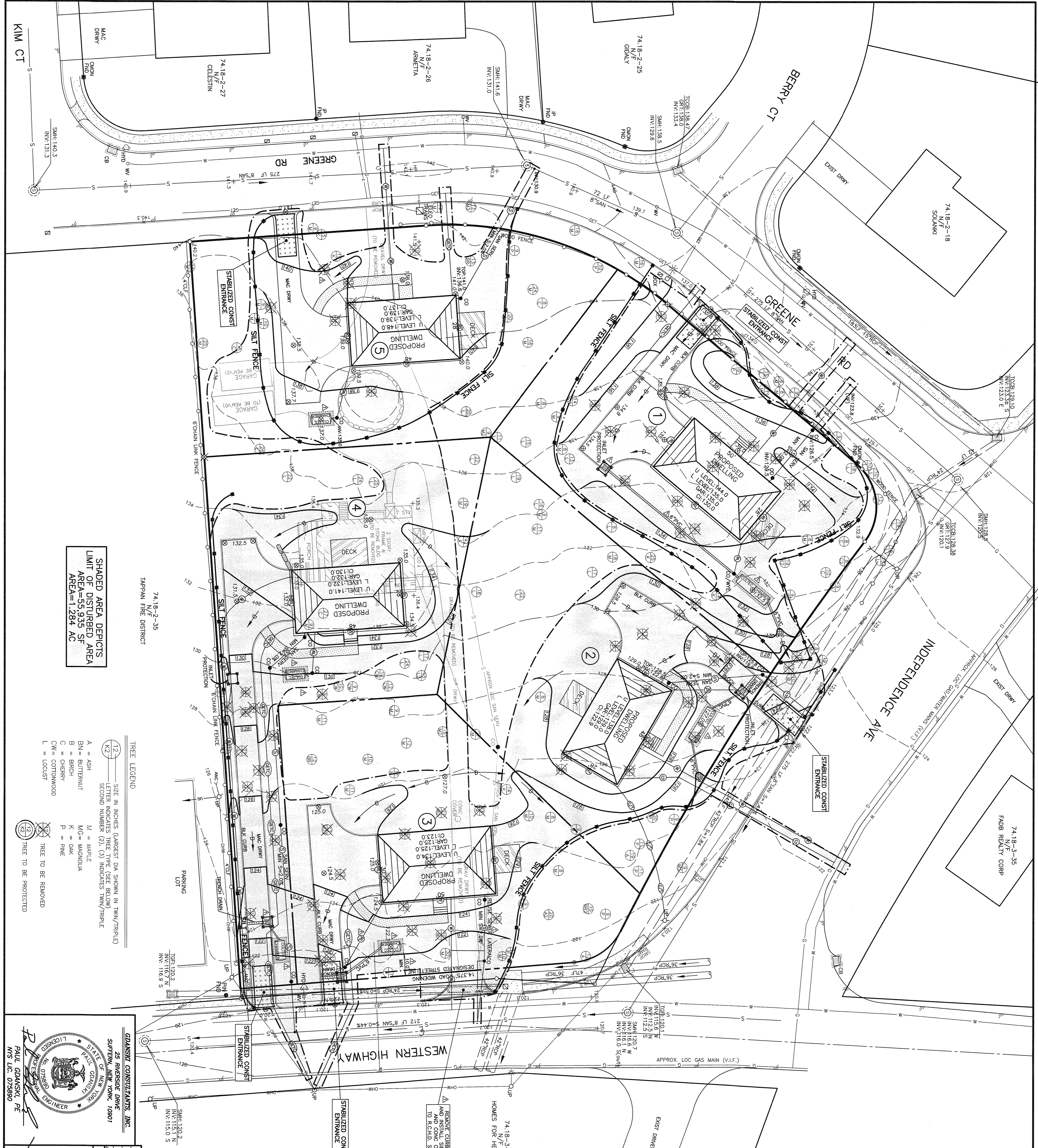
- DRAIN
- TCCB
- TFSI
- ROP
- CPP
- UP
- UTILITY POLE WITH LIGHT
- WATER VALVE
- HYDRANT
- GAS VALVE
- OVERHEAD WIRES
- GAS LINE
- GAS, ELEC, TEL
- WATER LINE
- GAS, ELEC, TEL, CATV
- CATV, TEL
- ROOF LEADER
- CONTOUR LINE
- SPOT GRADE
- PROPOSED CONTOUR LINE
- PROPOSED SPOT GRADE

4.375" ROAD WIDENING STRIP TO BE DEDICATED TO THE COUNTY OF ROCKLAND PER R.C. HIGHWAY

REMOVE CURB CUT AND INSTALL SIDEWALK TO EXIST DRIVE

CONC CHAMBER  
TOP: 121.0  
24" INV: 119.9 (N-S)  
36" INV: 118.6 (N-W)  
42" INV: 117.4 (OUT-S) 50" PIPE  
42" INV: 117.1 (OUT-S) NO. PIPE

74.18-2-48  
N/F  
HOMES FOR HEROES INC



SHADED AREA DEPICTS  
LIMIT OF DISTURBED AREA  
AREA=55,935 SF  
AREA=1,284 AC

74.18-2-35  
N/F  
TAPPAN FIRE DISTRICT

TREE LEGEND

- 12" SIZE IN INCHES (LARGEST DIA SHOWN IN TWNY/TRIPLE)  
LETTER INDICATES TREE TYPE (SEE BELOW)  
SECOND NUMBER (2), (3) INDICATES TWNY/TRIPLE
- A = ASH
  - BN = BUTTERNUT
  - B = BIRCH
  - C = CHERRY
  - CM = COTTONWOOD
  - L = LOCUST
  - M = MAPLE
  - D = DOGWOOD
  - G = GUM
  - K = OAK
  - P = PINE
- TREE TO BE REMOVED  
○ TREE TO BE PROTECTED

**GAUSKI CONSULTANTS, INC.**  
25 WISSEGE DRIVE  
SUITE 200, TAPPAN, NY, 10901  
PAUL GAUSKI, PE  
NYS LIC. 072990

**JAY A. GREENWELL, PLS**  
1000 W. 10TH ST.  
SUITE 200, TAPPAN, NY, 10901  
JAY A. GREENWELL, PLS  
NYS LIC. # 49676

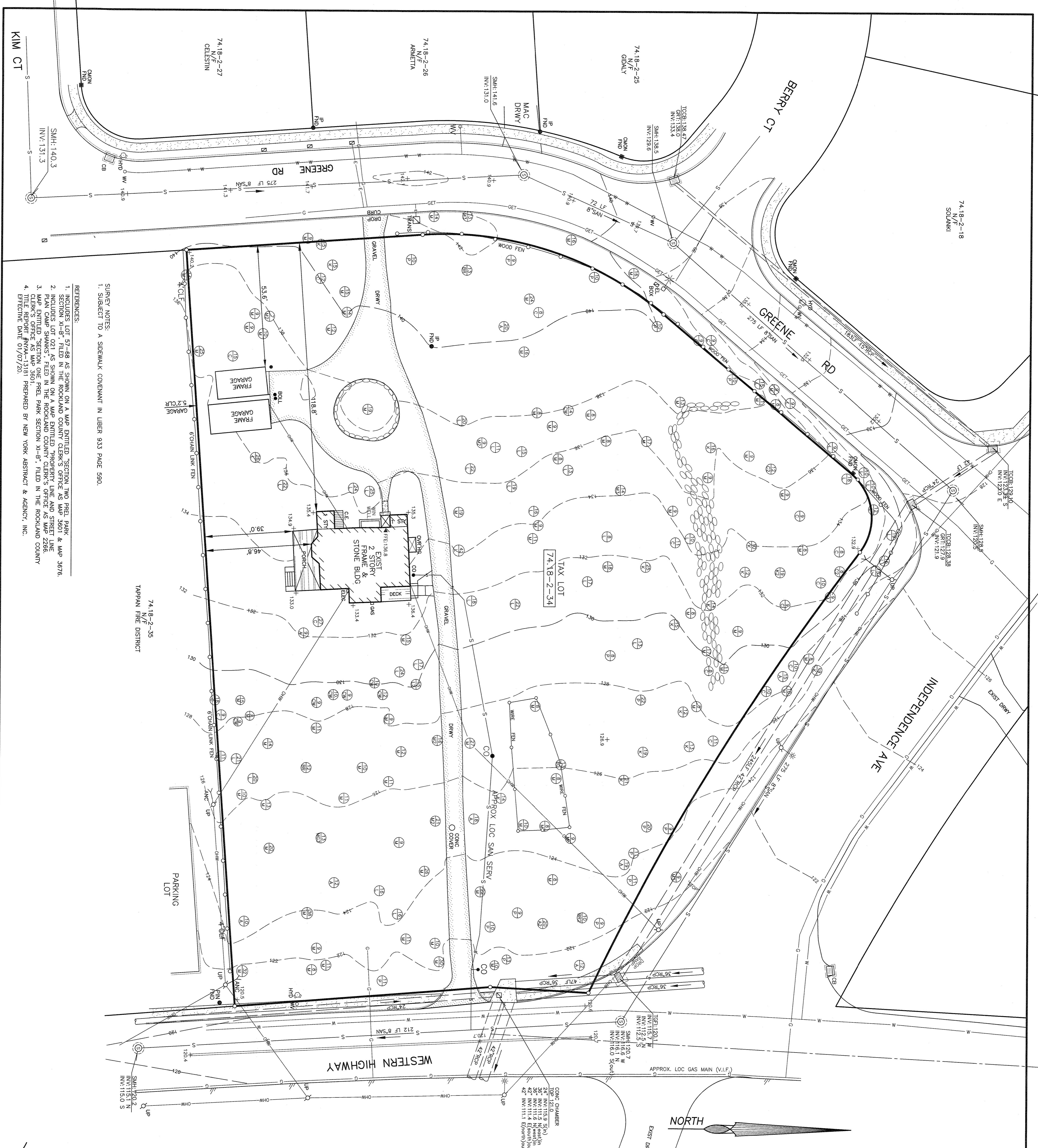
**EROSION CONTROL/LIMIT OF DISTURBANCE**

**SMK GREENE**  
TAPPAN, TOWN OF ORANGETOWN  
ROCKLAND COUNTY, STATE OF NEW YORK

**JAY A. GREENWELL, PLS, LLC**  
SURVEYING - LAND PLANNING  
85 LANFLETTE AVENUE, SUFFERN, NEW YORK, 10901  
PHONE 845-357-0830 FAX 845-357-0756  
© 2020 JAY A. GREENWELL PLS, LLC

- LEGEND**
- DRAINAGE INLET W/PIPPERS
  - DRUM MANHOLE/ WITH PRESS
  - TOP CURB @ CATCH BASIN
  - TOP GRADE FIELD INLET
  - REINFORCED CONCRETE PIPE
  - CORRUGATED PLASTIC PIPE
  - UTILITY POLE
  - UTILITY POLE WITH LIGHT
  - WATER VALVE
  - HYDRANT
  - GAS VALVE
  - OVERHEAD WIRES
  - GAS LINE
  - GAS, ELEC. TEL
  - WATER LINE
  - GAS, ELEC. TEL. CATV
  - CATV, TEL
  - ROOF LEADER
  - CONTOUR LINE
  - SPOT GRADE
  - PROPOSED CONTOUR LINE
  - PROPOSED SPOT GRADE
- LEGEND FOR EROSION CONTROL DURING CONSTRUCTION**
- CONSTRUCTION ENTRANCE DIMENSIONS 12' x 50'
  - SILT FENCE
  - INLET PROTECTION



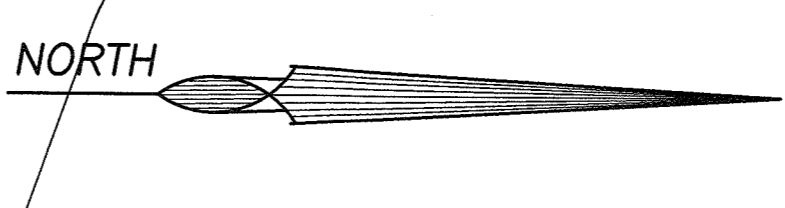


- SURVEY NOTES:**
1. SUBJECT TO A SIDEWALK COVENANT IN LIBER 933 PAGE 590

**REFERENCES:**

1. INCLUDES LOT 57-68 AS SHOWN ON A MAP ENTITLED "SECTION TWO PREL. PARK & MAP 3678."
2. RECORDS 58-7 FILED IN THE ROCKLAND COUNTY CLERK'S OFFICE AS MAP 3601 AND MAP 3678.
3. MAP ENTITLED "SECTION ONE PREL. PARK SECTION XI-B," FILED IN THE ROCKLAND COUNTY CLERK'S OFFICE AS MAP 3601.
4. TITLE REPORT NYTA-13181 PREPARED BY NEW YORK ABSTRACT & AGENCY, INC. EFFECTIVE DATE 01/07/20.

74.18-2-35  
N/F  
TAPPAN FIRE DISTRICT



**LEGEND**

- DRAINAGE INLET W/PIPES
- DRAIN MANHOLE WITH PIPES
- TOP CURB @ CATCH BASIN
- TOP GATE FIELD INLET
- REINFORCED CONCRETE PIPE
- CORRUGATED PLASTIC PIPE
- UTILITY POLE
- UTILITY POLE WITH LIGHT
- WATER VALVE
- HYDRANT
- FAS VALVE CONTROL VALVE
- GAS LINE
- GAS, ELEC
- WATER LINE
- CONTOUR LINE
- SPOT GRADE

**TREE LEGEND**

- (1) SIZE IN INCHES (LARGEST DIA SHOWN IN TWIN/TRIPLE)  
(2) LETTER INDICATES TREE TYPE (SEE BELOW)  
(3) INDICATES TWIN/TRIPLE
- A = ASH
  - BN = BUTTERNUT
  - B = BIRCH
  - C = CHERRY
  - CW = COTTONWOOD
  - L = LOCUST
  - M = MAPLE
  - MG = MAGNOLIA
  - K = OAK
  - P = PINE

DATE	ADDITIONS	TAX LOT #
		74.18-2-34
		AREA
		76,014 SF

**EXISTING CONDITIONS**

TAPPAN TOWN OF ORANGETOWN  
ROCKLAND COUNTY, STATE OF NEW YORK

**JAY A. GREENWELL, PLS, LLC**

SUBMITTING - LAND PLANNING  
85 LAFAYETTE AVENUE, SUITE 10901, NEW YORK, NY 10001  
PHONE: 845-357-0830 FAX: 845-357-0756

