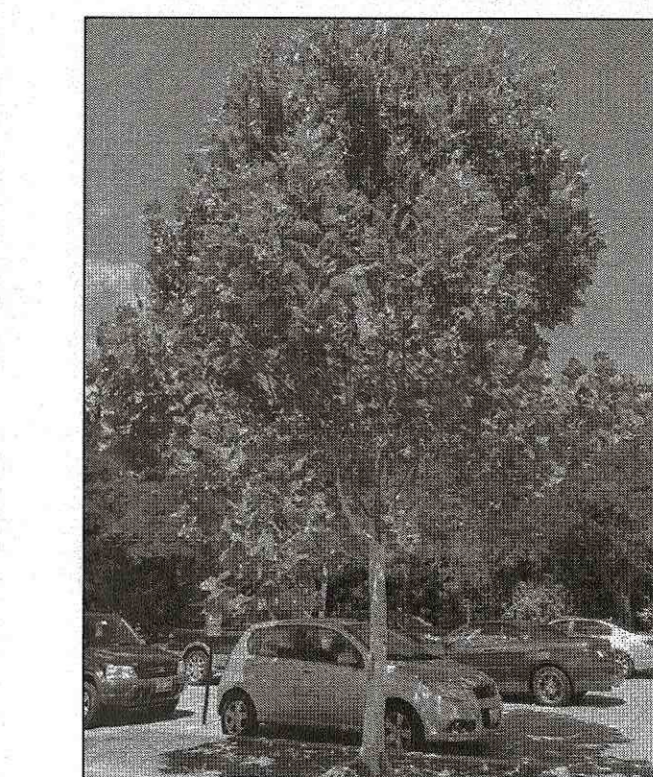
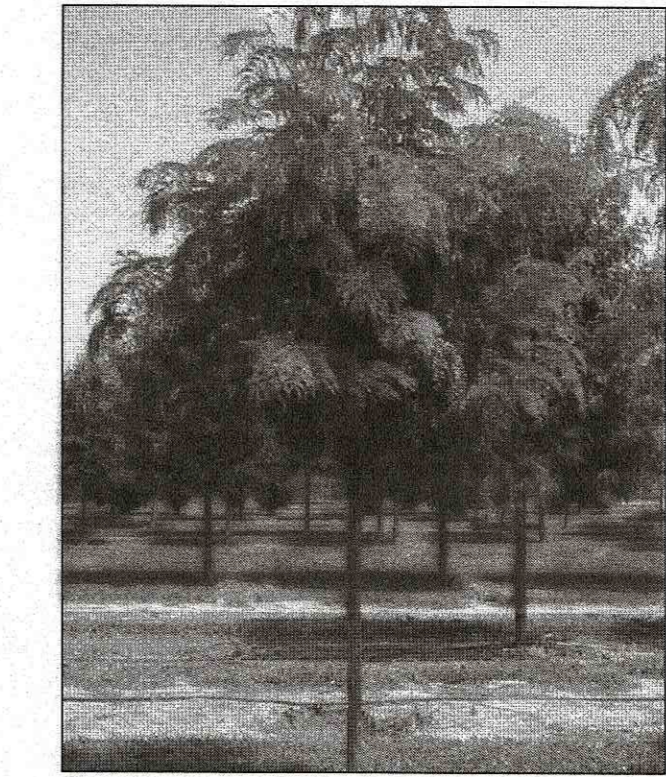
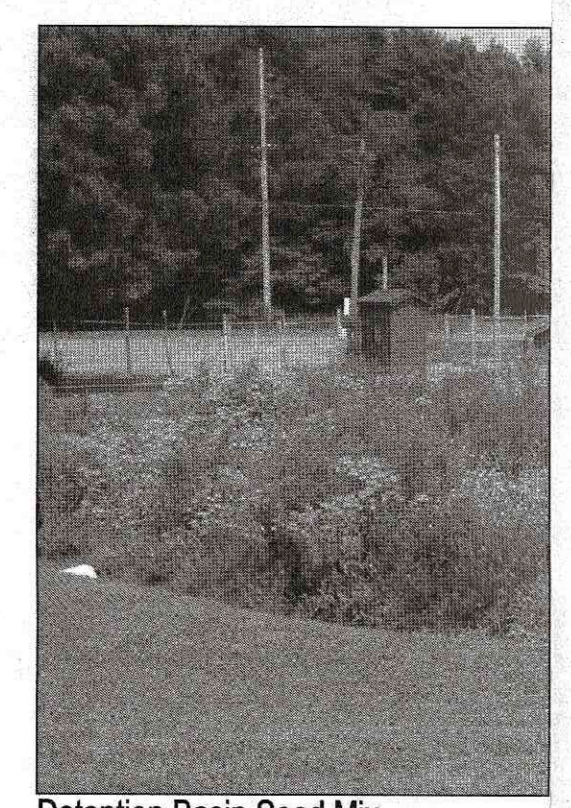


PLANTING SCHEDULE

QTY	BOTANICAL NAME	COMMON NAME	SIZE	COMMENTS
11	<i>Gleditsia triacanthos</i> var. <i>inermis</i>	Honey Locust	3-3.5'	
10	<i>Picea abies</i>	Norway Spruce	20'	
13	<i>Picea abies</i>	Norway Spruce	10-12'	
16	<i>Picea omorika</i>	Sorbian Spruce	8-10'	
5	<i>Platanus x acerifolia</i> 'Bloodgood'	London Plane Tree	2.5-3'	
30	<i>Thuja plicata</i> 'Green Giant'	Green Giant Arborvitae	8-10'	
GRASSES				
121	<i>Panicum virgatum</i> 'Northwind'	Northwind Switchgrass	2 Gall	
GROUNDCOVER				
797	<i>Juniperus horizontalis</i> 'Wiltonii'	Creeping Juniper	1 Gallon	2' oc.



- NATIVE DETENTION AREA MIX**
- SEED MIX
- ERNST SEED NATIVE DETENTION AREA MIX: 13 lbs
- | | |
|---|---|
| 32% <i>Panicum clandestinum</i> 'Tioga' | Desertongue 'Tioga' |
| 20% <i>Carex vulpinoidea</i> , PA Ecotype | Fox Sedge, PA Ecotype |
| 20% <i>Elymus virginicus</i> , PA Ecotype | Virginia Wildrye, PA Ecotype |
| 20% <i>Panicum virgatum</i> 'Shawnee' | Switchgrass 'Shawnee' |
| 4% <i>Agrostis perennans</i> , NY Ecotype | Autumn Bentgrass, Albany Pine Bush-NY Ecotype |
| 2% <i>Juncus tenuis</i> , PA Ecotype | Path Rush, PA Ecotype |
| 1% <i>Juncus effusus</i> | Soft Rush |
| 1% <i>Panicum rugatum</i> , PA Ecotype | Redtop Panicgrass, PA Ecotype |

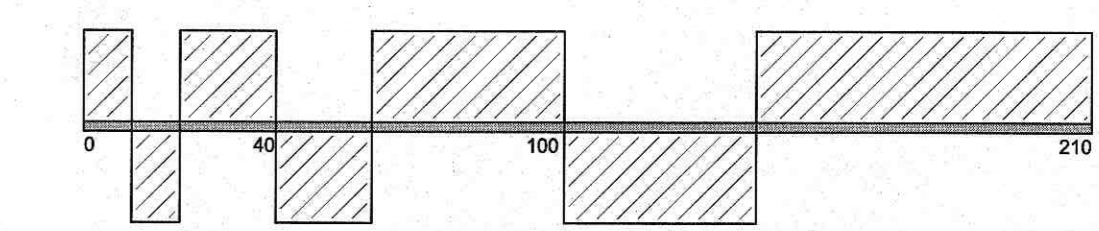
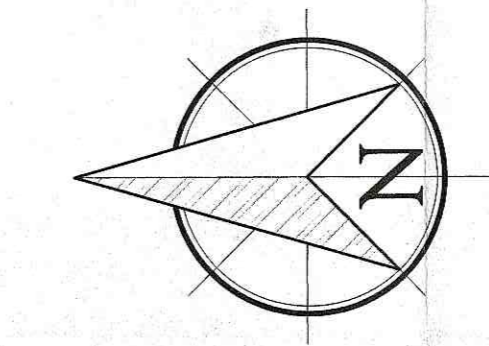


SURVEYOR:

NEW WAREHOUSE
155 S GREENBUSH ROAD
ORANGEBURG, NY 10962

DATE: NOVEMBER 28, 2018
DRAWN BY: ZJS
JOB NO: 062018
SCALE: 1" = 40'
FILENAME: 2018_1128_125-155
S.Greenbush

REVISIONS:



TO SCALE WHEN PLOTTED ON 30X42
PROGRESS SET NOT FOR CONSTRUCTION

PLANTING PLAN 155

SHEET NO.

L-701



LIGHTING SCHEDULE

SYMBOL	DETAIL	QTY	DESCRIPTION	CATALOG NUMBER	MOUNTING HEIGHT	LAMP	LUMENS
	1A-G01	9	EATON GALLEON LED LUMINAIRE POLE MOUNTED FIXTURE TYPE T4W DISTRIBUTION	GLEON-AF-06-LED-E1-T4W	14'	LED ARRAY	18,045+
	2L-G01	6	EATON 'GALLEON WALL' LED LUMINAIRE WALL MOUNTED FIXTURE TYPE T4W DISTRIBUTION	GWC-AF-02-LED-E1-T4W	14'	LED ARRAY	18,045+

SPECIFICATION FEATURES

Construction: Driver enclosure thermally isolated from optics for optimal thermal performance. Heavy wall, die-cast aluminum and cast enclosure housing and die-cast aluminum heat sink. A unique, patent pending overloading housing and heat sink provides sealability with superior structural rigidity. 30' vibration tested and rated. Optional toolless hardware available for ease of entry into electrical chamber. Housing is IP66 rated.

Optics: Patented, high-efficiency injection-molded AccuLED Optics technology. Optics are precisely designed to shape the distribution maximizing efficiency and application spacing. AccuLED Optics create consistent distributions with the capability to meet customized application requirements. Offered standard in 4000K (±1.25% CCT 70 CRI), Optional 3000K, 5000K and 6000K CCT.

Electrical: LED drivers are mounted to removable tray assembly for ease of maintenance. 120-277V 50/60Hz, 307V 60Hz or 480V 60Hz operation. 480V is compatible for use with 480V Max systems only. Standard with 0-10V dimming. Shipped standard with Eaton proprietary circuit module designed to withstand 100V of transient surge. The Galleon LED Luminaire is suitable for operation in -40°C to 40°C ambient environments. For applications with ambient temperatures exceeding 40°C, specify the HA (High Ambient) option. Light Squares are IP66 rated. Greater than 90% lumen maintenance expected at 50,000 hours. Available in standard 1A driver current and optional 800mA, 800mA and 1200mA driver currents (nominal).

Mounting: STANDING ARM MOUNT: Extruded aluminum arm includes lateral bracing and optional for easy positioning of fixture during mounting. When mounting two or more luminaires at 90° and 120° apart, the EA extension arm may be required. Refer to the arm mounting requirement table. Standard pole adapter included. For wall mounting, specify wall mount bracket option. QUICK MOUNT ARM: Adapter is bolted directly to the pole. Quick mount arm sits into place on the adapter and is secured via two screws, facilitating quick and easy installation. The versatile, patent pending, quick mount arm accommodates multiple drill patterns ranging from 1-1/2" to 4-7/8". Removal of the arm enables wiring of the fixture without having to access the driver compartment. A knockout enables round pole mounting.

Finish: Housing finished in super durable TSC polyester powder coat paint. 2.5 mil nominal thickness for superior protection against fade and wear. Heat sink is powder coated black. Standard housing colors include black, bronze, grey, white, dark platinum and graphite metallic. DALI and custom color matches available.

Warranty: Five-year warranty.

ENERGY DATA:
GLEON LED Driver
5.0 Power Factor
+0% Total Harmonic Distortion
120-277V Input
30V A-Bolt Drive
40°C Max. Temperature
40°C Min. Temperature
40°C Max. Temperature (W/Cycle)

1 EATON GALLEON LED: 14' HEIGHT
NOT TO SCALE

Steel Poles

SSS SQUARE STRAIGHT STEEL

DESIGN CONSIDERATIONS:
Wind induced vibration resulting from steady, unidirectional winds and other environmental forces, as well as vibration and coefficients of height factors for rigid-mounted installations (e.g., cantilevered balconies or overhangs) are not included in the standard. The information is provided for the standard purpose and installation. Factors, Allow, design system Engineer & Local Code Authority for details. For more information on design considerations, please refer to the Eaton website at www.eaton.com/lighting for available options, accessories and ordering information.

STEEL POLE NOT TO SCALE

FEATURES:
• ASTM Grade steel base plate with ASTM A366 base cover
• Mount hole assembly 2" x 8" on 6" and 6" pole; 2" x 4" on 4" pole
• 10'-0" mounting heights
• Detailed or custom (specify)

2 GWC GALLEON WALL
NOT TO SCALE

SPECIFICATION FEATURES

Construction: Driver enclosure thermally isolated from optics for optimal thermal performance. Heavy wall aluminum housing die-cast with integral external heat sink to provide superior structural rigidity and an IP66 rated housing. Over if construction passes a 1.5G vibration test to ensure mechanical integrity. UPLIGHTING: Specify with the UPL option for in-cabinet mount up light housing with additional protections to maintain IP rating.

Optics: Choice of three patent pending, high-efficiency AccuLED Optics. The optics are precisely designed to shape the distribution maximizing efficiency and application spacing. AccuLED Optics create consistent distributions with the capability to meet customized application requirements. Offered standard in 4000K (±1.25% CCT and minimum 70 CRI), Optional 3000K, 5000K and 6000K CCT. Greater than 90% lumen maintenance expected at 50,000 hours. Available in standard 1A driver current and optional 800mA, 800mA and 1200mA driver currents (nominal).

Electrical: LED drivers are mounted for ease of maintenance. 120-277V 50/60Hz, 307V 60Hz or 480V 60Hz operation. 480V is compatible for use with 480V Max systems only. Drivers are provided standard with 0-10V dimming. An optional Eaton proprietary surge protection module is available and designed to withstand 100V of transient line surge. The Galleon Wall LED luminaire is suitable for operation in -40°C to 40°C ambient environments. For applications with ambient temperatures exceeding 40°C, specify the HA (High Ambient) option. Emergency egress options for 30°C ambient environments and occupancy sensor available.

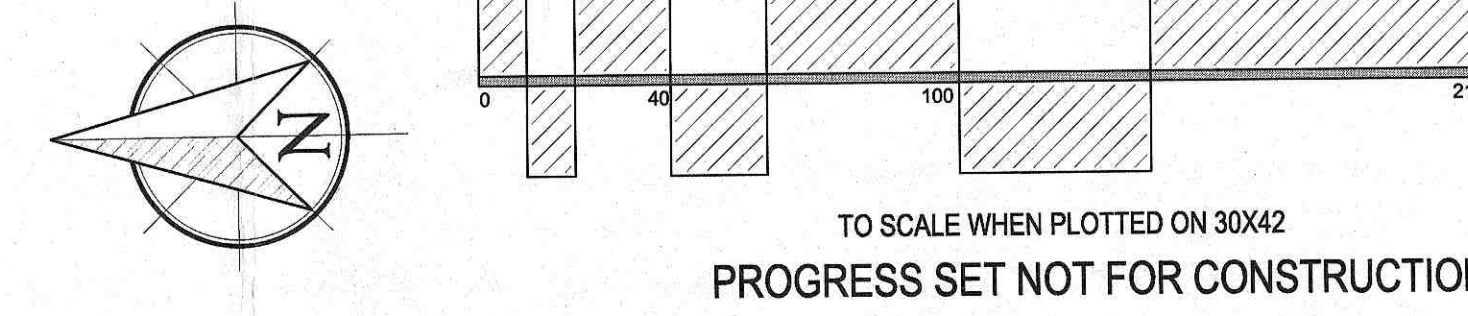
Mounting: Casted and zinc plated rigid steel mounting attachment fits directly to 4" pole or wall with the Galleon Wall 'Hook-A-Lock' mechanism for quick installation. Secured with two captive corrosion resistant black oxide coated allen head set screws which are concealed but accessible from bottom of fixture.

Finish: Housing finished in super durable TSC polyester powder coat paint. 2.5 mil nominal thickness for superior protection against fade and wear. Standard colors include black, bronze, grey, white, dark platinum and graphite metallic. DALI and custom color matches available. Consult the McGraw-Hill Architectural Color brochure for the complete selection.

Warranty: Five-year warranty.

ENERGY DATA:
GLEON LED Driver
5.0 Power Factor
+0% Total Harmonic Distortion
120-277V Input
30V A-Bolt Drive
40°C Max. Temperature
40°C Min. Temperature
40°C Max. Temperature (W/Cycle)

2 GWC GALLEON WALL
NOT TO SCALE



SURVEYOR:

NEW WAREHOUSE
155 S GREENBUSH ROAD
ORANGETOWN, NY 10962

DATE: JANUARY 28, 2019
DRAWN BY: ZJ5
JOB NO: 062018
SCALE: 1" = 40'
FILENAME: 2019_01231 125-155
S.Greenbush

REVISIONS:

PLANNING BOARD
MEETING DATE:
MAR 1 8 2019
Town Of Orangetown

Blythe M. Yost A.S.A. | Registered Landscape Architect

LIGHTING PLAN 155

SHEET NO.

L-601